

PICTURE THIS.....

With views of wetlands, Sunnynook is a modern, fresh holiday house packed with accessible features. A place for respite, a getaway or medium-term accessible accommodation that is also pet friendly.

This special home-away-from-home has been designed to nurture you and the environment. Near Port Elliot, and just minutes from pristine beaches, this 7-star energy-efficient holiday home meets NDIS fully accessible disability standards to maximize your comfort any time of the year.

It truly is a sunny nook in winter, and a shady nook in summer. Sunnynook features the latest in smart technology and home automation.

SUNNYNOOK

**Fleurieu
Peninsula - SA**

**75 minutes
from Adelaide**



Call
1300 189 889



THE SETTING

DESIGNER FEEL WITHOUT THE PRICE TAG

Built in 2020, overlooking the tranquil wetlands near Port Elliot and just minutes stroll from pristine beaches. Sit out on the patio and watch the world go by - literally - with the Encounter Bikeway right outside your door running along the wetlands.



Enjoy the fire pit outside at night or the good selection of books, games and DVDs, as well as Netflix and Alexa to entertain you.

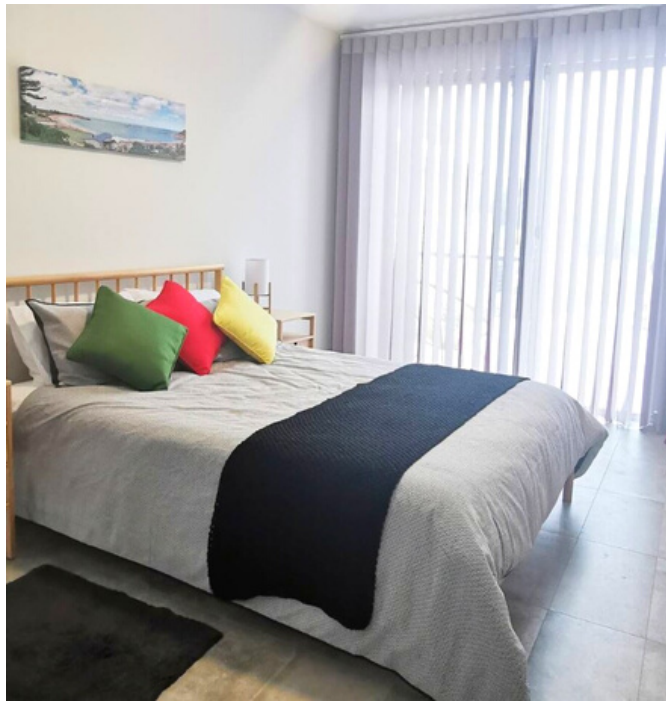
Guests have full access to Sunnynook. To maximise independence, Sunnynook features the latest in smart technology and home automation. Doors automatically open with a press of a button and voice commands control lighting and climate.



Pets are welcome on approval (please notify at time of booking). A \$300 pet bond is required.



ACCESSIBLE
ACCOMMODATION



THE ACCOMMODATION

SLEEPS UP TO 12 GUESTS

Bedroom 1: One king bed that is accessible bed height with an electric profiling bed, and pressure care mattress with plenty of space to manoeuvre.

Bedroom 2: one queen bed



Bedroom 3: two single beds (Twin king-singles) that can be placed together or apart.

Bedroom 4: Sleep six in the kid's bunk-room with two bunk beds and trundles. Ideal for Support staff and family with children.

Ensuite: Open plan (roll-in) shower, adjustable shower head, grab rails around all walls and glide under the vanity. Commode provided.

Main bathroom: grab rails in shower, open plan shower.



**ACCESSIBLE
ACCOMMODATION**







KEY FEATURES TAILORED TO PEOPLE WITH DISABILITY

OUTSIDE:

- All level entry
- Level back yard seating area that is covered, overlooking wetlands.

INSIDE:

- Fixed grab bars wrapped around the bathroom
- Mobile hoist
- King bed that is accessible bed height with an electric profiling bed, with plenty of space to manoeuvre. There is a pressure care mattress too.
- Room under bed for hoist (second and third bedroom)
- Commode shower chair
- Step-free shower
- Adjustable shower head
- Step-free access
- Extra wide easy-open doors
- Smart technology: Doors automatically open with a press of a button and voice commands control lighting and climate.
- Wide clearance around furniture.



**ACCESSIBLE
ACCOMMODATION**

REVIEWS

SUITS THE HIGHEST NEEDS OF PEOPLE WITH DISABILITIES.

Some properties say they are accessible. This property really IS accessible.

Spacious undercover parking, flat entrances, wide doorways, automated door openers and closers, portable hoist, handrails In the bathroom, electric adjustable bed, home automation to operate lights and appliances.

Platinum level accessibility.

And The Views Outside Are Magnificent.

Melissa June 21

Perfect setting for a person with a wheelchair.

Everything was easily accessible and easy to use.

This was a great opportunity for people with disabilities to be able to get some time away from home or their facility.

Tracy April 21

[MORE INFO](#)
[CLICK HERE](#)



ACCESSIBLE
ACCOMMODATION

1300 180 889
accessibleaccommodation.com.au