

## PICTURE THIS.....

Sit back and relax with all the modern features of an accessible home in this beautiful beachside escape, suiting the highest disability needs. Perfect for STA, MTA or group respite.

Situated in the picturesque and thriving beachside town of Torquay, Victoria, the surfing capital of Australia and the start of the famous Great Ocean Road, this stylish home has been recently renovated to sleep 10-12.

Designed for a relaxing family or group getaway, close to beaches, shopping areas and the Torquay town centre.

Loaded with discrete accessible features, Saltwater is pet-friendly on request & approval and is available exclusively with Accessible Accommodation.



**Saltwater  
Torquay  
Victoria**

**90 minutes  
from  
Melbourne**

**30 Minutes  
from  
Geelong**

**Call**

**1300 180 889**

# THE ACCOMMODATION

## **FRESHLY RENOVATED FOR UP TO 12 GUESTS**



An Occupational Therapist specialising in home modifications led the design of the renovation of this accessible beach house with discreet accessible features. For example, Specialist kitchen appliances for improved accessibility. slide & hide wall oven, pull-out drawer dishwasher.



Catering for high accessibility needs, the property is wheelchair accessible throughout with widened doorways, a modern level entry ensuite bathroom, & designer grab rails.



A range of disability equipment is available including an in-built recessed single-track ceiling hoist and electric king single adjustable bed. Sleeping 10-12 guests comfortably, with 4 bedrooms and 2 living spaces.



**ACCESSIBLE  
ACCOMMODATION**





# LOCATION

## **SURF COAST**

Situated on the doorstep of the Great Ocean Road, Torquay and the surrounding areas offer many enjoyable activities and experiences.

Accessible activities and attractions in the area include accessible playgrounds, nature reserves and parks in and around Torquay.

The Surf Coast Walk, running 44km from Point Impossible to Fairhaven, has many sections that can be easily accessed by people of all abilities.

All-terrain and beach wheelchairs can be hired for free from the Surf Coast Shire Council so people with a disability can enjoy the beaches, oceans and trails.



**ACCESSIBLE  
ACCOMMODATION**







# THE ALL- IMPORTANT BATHROOM

**1 X FULLY ACCESSIBLE,  
1 X STANDARD BATHROOM**

Two bathrooms, with the accessible bathroom offering:

- Mobile shower commode
- Over toilet frame
- Glide under vanity
- Grab rails in the shower and around the toilet.
- Large turning circle for wheelchair

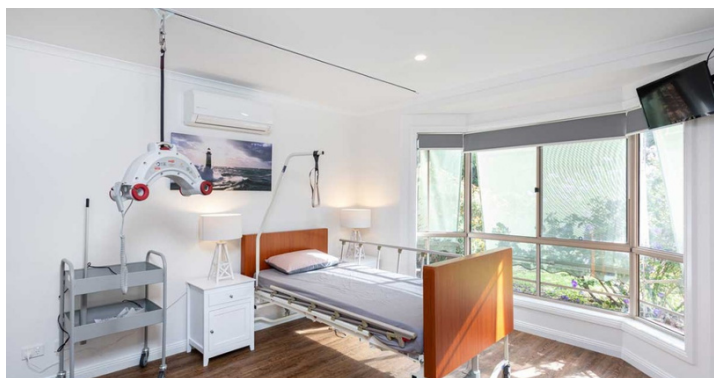


ACCESSIBLE  
ACCOMMODATION

# EQUIPMENT PROVIDED

**SUITS THE HIGHEST NEEDS OF PEOPLE WITH DISABILITIES.**

- Ceiling Hoist
- Mobile floor hoist
- Electric Adjustable King single Bed
- A single foam pressure-relieving mattress
- Fixed Grab bars
- Mobile shower commode
- Over toilet frame
- Overbed table
- Specialist kitchen appliances for improved accessibility.  
slide & hide wall oven, pull-out drawer dishwasher
- Overhead bed pole
- Bedside rails



# REVIEWS

**SUITS THE HIGHEST NEEDS OF PEOPLE WITH DISABILITIES.**

My wife and I and my brother and sister in-law spent two nights in this lovely house. I have MND and am in a Power Wheelchair.

The room was ideal for me as it had a Hospital Bed, Hoist and plenty of space. The bathroom also had plenty of space with rails, a Commode Chair and other useful equipment.

The lounge and kitchen/dining area again offered very good space.

We would highly recommend this house as it is a very pleasant place with easy access for people with disabilities.

Ian J 2020



ACCESSIBLE  
ACCOMMODATION

1300 180 889  
[accessibleaccommodation.com](http://accessibleaccommodation.com)

# Exclusive Rates For Accessible Accommodation Guests.

Call 1300 180 889

or email

[bookings@theaccessiblegroup.com](mailto:bookings@theaccessiblegroup.com)

