

# BUNDABERG REGION

## Accessible Destination Guide 2025

#visitbundaberg  
@visitbundaberg



## ACKNOWLEDGMENT OF COUNTRY

We acknowledge the Traditional Owners of the land, the Taribelang Bunda, Gooreng Gooreng, Gurang, and Bailai Peoples. We respect their deep connection to this land, water, and sea, which has cultural and spiritual importance. We pay our respects to Elders past, present, and future.



# Guide Directory

<b>Introduction</b>	<b>4</b>
<b>Welcome to the Bundaberg Region</b>	<b>7</b>
<b>Accessibility at a Glance</b>	<b>11</b>
<b>Getting Here</b>	<b>19</b>
<b>Tours &amp; Attractions</b>	<b>39</b>
<b>Restaurants &amp; Cafes</b>	<b>124</b>
<b>Parks, Gardens &amp; Playground</b>	<b>146</b>
<b>Accommodation</b>	<b>161</b>
<b>Beaches &amp; Walks</b>	<b>182</b>
<b>Visitor Resources</b>	<b>200</b>



# INTRODUCTION





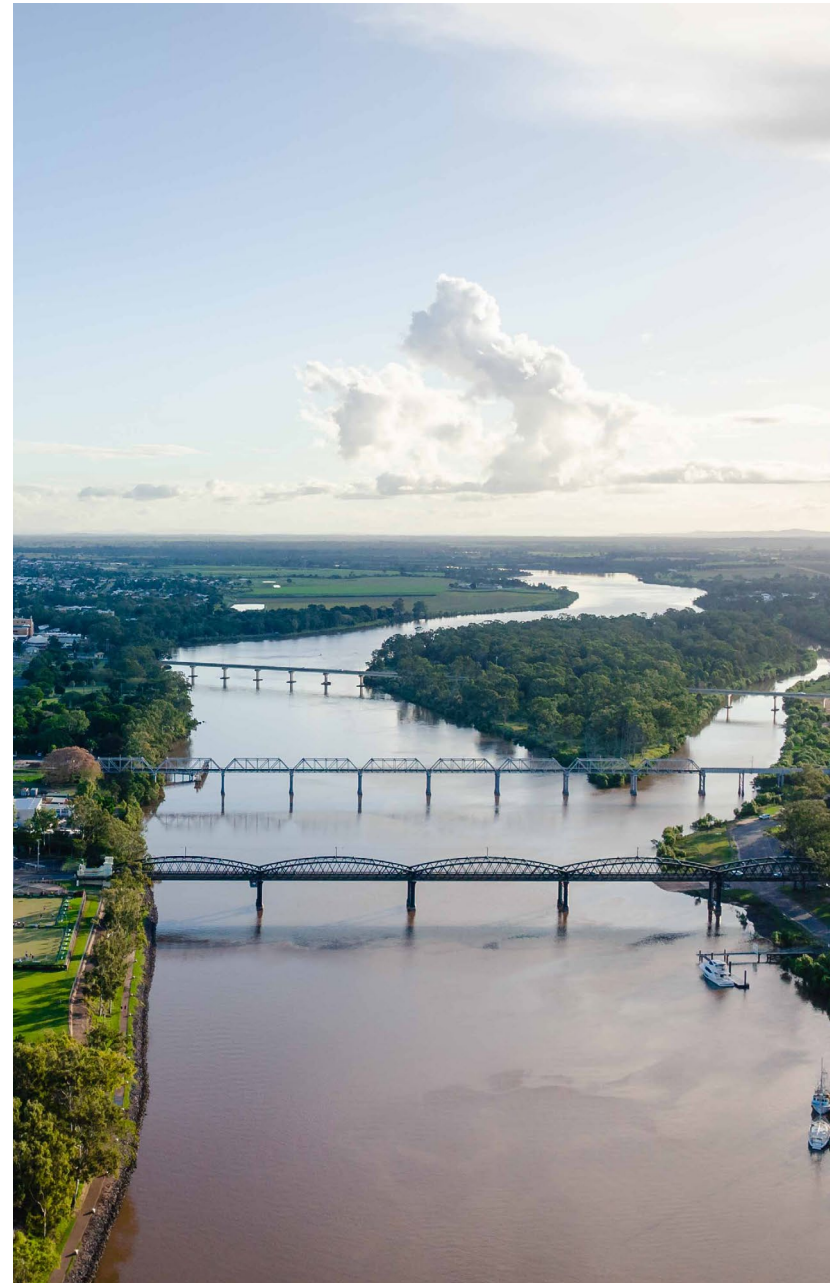
# Introduction

The Bundaberg Region is a destination rich in natural wonders, authentic experiences, and warm hospitality. Whether you are ready to explore the wonders of the Southern Great Barrier Reef, taste local produce, sip iconic drinks or have a yarn with our operators under a sky full of stars, we are committed to making our region accessible and inclusive so that all visitors can enjoy what makes Bundaberg so special.

We know how important it is to have clear, practical information when planning a holiday, especially when accessibility is a consideration. That's why Bundaberg Tourism, in partnership with GetAboutAble and the All Abilities Alliance Bundaberg, has created the Bundaberg Region Accessible Destination Guide.

While there's always more to do, this guide, proudly funded by the Queensland Government through the Access Project Grants, Elevate Fund, delivered by the Department of the Environment, Tourism, Science and Innovation, is a positive step towards greater inclusion. We hope this guide helps you plan, book, and experience your next holiday with greater ease and confidence.

We're always looking to improve and would love to hear your thoughts. If you have feedback, please get in touch at: [info@bundabergregion.org](mailto:info@bundabergregion.org)





# Using this guide

Whether you are planning your next holiday or exploring what is possible, this guide is here to help you discover accessible experiences across the Bundaberg Region with confidence and ease.

This guide is the result of strong collaboration between Bundaberg Tourism, Bundaberg All Abilities Alliance, Wide Bay Kids, Empowering Experiences (formerly GetAboutAble), and passionate tourism operators from across our region. We're grateful to everyone who contributed their time and expertise to make this resource possible.

With the support of Empowering Experiences experts in accessibility and inclusion, we have worked closely with local operators to gather practical, up-to-date information that helps reduce barriers and supports inclusive travel for all.

The tourism operators and experience providers featured in this guide are the best people to describe what they offer. This guide is a companion to their visitor information and provides the additional accessibility information that people with disability require to plan their visit.

There is a lot of helpful information in here! To make it easier to find what you need, we have included an **Accessibility at a Glance** section. This gives you a quick summary of accessibility features at each venue. If you are seeking more detail, each listing in the guide has its own section with extra information to help you decide what's right for you.

Our local tourism operators are genuinely committed to creating welcoming, inclusive experiences. Whether it's adjusting sound levels, modifying a tour route, or offering extra support, they're ready to help make your visit as enjoyable as possible. If you have any questions or specific needs, we encourage you to reach out to them directly using the contact details provided.

We hope this guide inspires you to explore, connect with others, and enjoy everything the Bundaberg Region has to offer.



A family of four, including a mother, a father, and two young girls, are walking along a wooden boardwalk. The boardwalk has a railing made of wooden posts and metal cables. In the background, there is a rocky coastline, a sandy beach, and the ocean under a clear blue sky. The text "WELCOME TO THE BUNDABERG REGION" is overlaid in large white letters.

# WELCOME TO THE BUNDABERG REGION



# Welcome to the Bundaberg Region

Just four hours by car or train, and a short 45 minute flight north of Brisbane, Bundaberg is your gateway to the Southern Great Barrier Reef and home to Australia's famous turtle encounter at Mon Repos Turtle Centre. It's where the beach meets the reef, the food is full of flavour, the rum is world-class, and the locals are ready to say hello.

From Bundaberg, you can explore the Southern Great Barrier Reef with a boat trip to Lady Musgrave Island or a short flight to Lady Elliot Island. Swim, snorkel, or simply relax and enjoy the reef's natural beauty. In the clear waters, you might spot turtles, manta rays, colourful fish and coral formations. Both islands offer a range of options to support different mobility and comfort needs. We recommend contacting them directly to find the experience that's right for you.

Bundaberg is also known for its award-winning food and drinks.

Bursting with flavour, many local farms, cafes, and distilleries open their doors inviting visitors to slow down, savour the region's richness, and connect with the people who grow, brew, and serve with pride. Enjoy farm-fresh produce, local seafood, and iconic drinks like Bundaberg Rum and Bundaberg Ginger Beer.

The Bundaberg Region has everything you need for a fun and inclusive holiday – accessible beaches, stunning nature, great food and drink, and friendly people. Whether you're here to relax, explore, or taste your way around, there's something for everyone.



[Listen to Vacayit audio guides](#)

Scan the QR code or visit the [Introducing Bundaberg Region audio guide](#) to hear what makes the Bundaberg Region special.





# Explore the Region



## Bundaberg

Bundaberg is the heart of the region – a friendly town full of history, flavour, and stories. Ask a local what to do and you'll probably hear three favourites: visit the Bundaberg Rum Distillery, Bundaberg Brewed Drinks, and Hinkler Hall of Aviation. But there's so much more to discover.

Wander the historic main street and enjoy a warm welcome at local shops and cafés. Explore local art and culture, or slow down with a peaceful walk along the Burnett River.



## Bargara and Coral Coast

Set along the Southern Great Barrier Reef, Bargara and the Coral Coast offer a relaxed beachside lifestyle. At the centre of it all is Bargara – a laid-back spot perfect for a classic family holiday. Think morning beach walks, ocean swims, and brunch made with local produce.

You've heard of island hopping, but what about beach hopping? With beaches stretching from Woodgate in the south to Moore Park in the north, you're sure to find your perfect spot in the sun.



## Childers and Gin Gin

Take your time exploring the charming country towns of Childers and Gin Gin. Discover local history, friendly faces, and award-winning flavours surrounded by rolling hills and rich red soil.

Stroll along Childers' historic main street, where heritage buildings and welcoming locals bring the town to life. Then hit the road and stop in Gin Gin for one of the famous pies from the local bakery – a must-try treat.



## North Burnett

From rugged mountain ranges to peaceful rivers, the North Burnett is the perfect place to both explore and unwind.

Take a hike through Cania Gorge or Mount Walsh National Parks for stunning views and a bit of adventure. Or slow down, breathe in the fresh country air, and enjoy the friendly hospitality in the region's quiet hinterland towns like Gayndah, Monto, and Mundubbera – just to name a few.



# ACCESSIBILITY AT A GLANCE





# Getting Here

Getting to the Bundaberg Region is easy. With a growing focus on accessibility, the region welcomes a range of services to help visitors arrive and depart with confidence.

GETTING HERE									
	Accessible Parking on site	Accessible drop-off point on site or near-by	Wheelchair accessible toilet facilities	Ambulant toilet facilities	Companion Card Accepted	Concession Card Available	Assistance Animals welcome	Hearing Loop/Hearing Augmentation	Detailed Information location in Guide
<b>Bundaberg Airport</b>	Yes	Yes	Yes LH & RH	No	N/A	N/A	Yes	Yes	<a href="#">Page 21</a>
<b>Bundaberg Railway Station</b>	Yes	Yes	Yes RH	No	N/A	N/A	Yes	Yes	<a href="#">Page 27</a>
<b>Tilt Trains</b>	N/A	N/A	Yes	No	Yes	Yes	Yes	Yes	<a href="#">Page 27</a>
<b>Spirit of Queensland</b>	N/A	N/A	Yes	No	Yes	Yes	Yes	Yes	<a href="#">Page 28</a>
<b>Greyhound Bus</b>	N/A	N/A	Yes LH & RH	No	Yes	Yes	Yes	No	<a href="#">Page 34</a>

# Tours & Attractions

From reef to river, farm to table - the Bundaberg Region is full of unforgettable experiences. Connect with nature at the Mon Repos Turtle Centre where accessible pathways and interactive displays bring turtle conservation to life. Discover rich local flavours at Macadamias Australia, Bundaberg Rum, and the Bundaberg Brewed Drinks Barrel – experiences that will make your taste buds tingle. Or immerse yourself in wonder with a visit to Mystery Craters or Monsoon Aquatics. There's something for everyone!

TOURS & ATTRACTIONS									
	Accessible Parking on site	Accessible drop-off point on site or nearby	Wheelchair accessible toilet facilities	Ambulant toilet facilities	Companion Card Accepted	Concession Card Available	Assistance Animals welcome	Hearing Loop/ Hearing Augmentation	Detailed Information Located in Guide
<b>AREA: BUNDABERG</b>									
<b>Alexandra Park Zoo</b>	Yes	No	Yes RH	Yes	Yes	No	Yes	No	<a href="#">Page 40</a>
<b>Bundaberg Brewed Drinks Barrel</b>	Yes	Yes	Yes RH	No	Yes	No	Yes	No	<a href="#">Page 46</a>
<b>Bundaberg Rum Visitor Experience</b>	Yes	Yes	Yes RH	Yes	Yes	No	Yes	No	<a href="#">Page 52</a>
<b>Bundy Bowl &amp; Leisure</b>	Yes	Yes	Yes LH (Female) & RH (Male)	No	N/A	N/A	Yes	No	<a href="#">Page 61</a>
<b>Fairymead House Sugar Museum</b>	Yes	Yes	Yes RH	No	Yes	Yes	Yes	No	<a href="#">Page 71</a>
<b>Hinkler Hall of Aviation</b>	Yes	Yes	Yes LH	Yes Female & Male	Yes	Yes	Yes	No	<a href="#">Page 78</a>



# Tours & Attractions

TOURS & ATTRACTIONS									
	Accessible Parking on site	Accessible drop-off point on site or nearby	Wheelchair accessible toilet facilities	Ambulant toilet facilities	Companion Card Accepted	Concession Card Available	Assistance Animals welcome	Hearing Loop/ Hearing Augmentation	Detailed Information Located in Guide
AREA: BUNDABERG (continued)									
Macadamias Australia Visitor Experience	Yes	Yes	Yes LH	Yes Female & Male	Yes	Yes	Yes	No	<a href="#">Page 86</a>
Taribelang Bunda Cultrual Tours	No	Yes	No	No	Yes	N/A	Yes	No	<a href="#">Page 115</a>
Tinaberries	Parking spaces reserved for PWD	Space reserved close to entrance	No	No	N/A	N/A	Yes	No	<a href="#">Page 119</a>
AREA: BARGARA AND CORAL COAST									
Mon Repos Turtle Centre	Yes	Yes	Yes LH	Yes	No	Yes	Yes* Restrictions may apply	No	<a href="#">Page 94</a>
Monsoon Aquatics	No	No	Yes RH	No	No	Yes	Yes	No	<a href="#">Page 103</a>
AREA: GIN GIN									
Mystery Craters	No	No	Yes* Path to toilet is not paved or even	No	No	Yes	Yes	No	<a href="#">Page 109</a>

# Restaurants & Cafes

Serving farm-fresh delights using ingredients grown just down the road, is what our region's makers do best. Bundaberg offers a diverse and inclusive dining scene, with many restaurants and cafés providing wheelchair access, accessible restrooms, and ample seating. Whether you're in the hub of Bundaberg or along the coast, you'll find welcoming venues catering to various dietary needs and mobility requirements.

RESTAURANTS & CAFES									
	Accessible Parking on site	Accessible drop-off point on site or nearby	Wheelchair accessible toilet facilities	Ambulant toilet facilities	Companion Card Accepted	Concession Card Available	Assistance Animals welcome	Hearing Loop/Hearing Augmentation	Detailed Information Located in Guide
AREA: BUNDABERG									
The Waves Sports Club	Yes	Yes	Yes LH & RH	Yes	No	Yes on site	Yes	No	<a href="#">Page 125</a>
AREA: BARGARA AND CORAL COAST									
The Beach Mill	Yes Nearby	No	Yes LH (Male) & RH (Female)	No	Yes	Yes Nearby	Yes	No	<a href="#">Page 133</a>
The Garden Mill Cafe	No	No	Yes 2x LH	No	Yes	Yes on site	Yes	No	<a href="#">Page 136</a>
Lighthouse Hotel Bistro & Bar	Yes	Yes	No	No	Yes	No	Yes	No	<a href="#">Page 141</a>



# Parks, Gardens & Playgrounds

The Bundaberg Region is home to a wide range of accessible parks, gardens, and playgrounds designed for everyone to enjoy. Many feature wheelchair-friendly paths, inclusive play equipment, accessible toilets, and shaded picnic areas. Highlights include the Bundaberg Botanic Gardens, South Head Parklands, and Alexandra Park — each offering welcoming, all-abilities spaces for families, visitors, and nature lovers alike.

## PARKS, GARDENS & PLAYGROUNDS

	Accessible Parking on site	Accessible drop-off point on site or nearby	Wheelchair accessible toilet facilities	Ambulant toilet facilities	Wheelchair accessible play equipment	Fenced playground	Barbeque and/or picnic facilities	Detailed information located in Guide
<b>AREA: BUNDABERG</b>								
<b>Alexandra Park</b>	Yes	No	Yes 2x RH	Yes	Yes	No	Yes Wheelchair accessible	<a href="#">Page 40</a> (See Alexandra Par Zoo listing)
<b>Bundaberg Botanic Gardens</b>	Yes	No	Yes LH (Female), RH (Male), & LH (all gender)	Yes	Yes	Yes	Yes Wheelchair accessible	<a href="#">Page 147</a>
<b>AREA: BARGARA AND CORAL COAST</b>								
<b>Life Savers Park</b>	Yes	No	Yes	Yes	No	No	Yes Wheelchair accessible	<a href="#">Page 188</a> (See Elliott Heads listing)
<b>South Head Parklands</b>	Yes	No	Yes RH	No	Yes	No	Yes Wheelchair accessible	<a href="#">Page 154</a>
<b>Turtle Park and Playground</b>	Yes	No	Yes LH & RH	No	yES	No	Yes Wheelchair accessible	<a href="#">Page 157</a>

# Accommodation

The Bundaberg Region offers a diverse range of accessible accommodations, ensuring comfort and inclusivity for all travelers. Whether you're seeking city convenience or coastal serenity, the region provides options tailored to various accessibility needs. Our commitment to accessibility ensures that all visitors can experience the region's rich offerings.

ACCOMMODATION								
	Accessible Parking on site	Accessible drop-off point on site or nearby	Wheelchair accessible rooms	Mobility friendly rooms	Wheelchair accessible pool	Other wheelchair accessible amenities	Assistance animals welcome	Detailed information located in Guide
AREA: BUNDABERG								
Villa Mirasol Motor Inn	Yes	Yes	Yes	N/A	No	Outdoor seating area	Yes	<a href="#">Page 162</a>
AREA: BARGARA AND CORAL COAST								
Lighthouse Hotel Accommodation	Yes	Yes	No	Yes	No	No	Yes	<a href="#">Page 167</a>
Turtle Sands Nature Resort	Yes	Yes	Yes	N/A	Yes	Camp kitchen, Beach/pool mobility equipment	Yes	<a href="#">Page 169</a>



# Beaches & Walks

The Bundaberg Region's coastline offers a mix of family-friendly beaches and scenic walking trails, many of which are accessible for all visitors. From the calm waters of Bargara to the rock pools of Elliott Heads, the region's beaches are ideal for swimming, relaxing, and exploring. Sealed coastal pathways connect popular beachside towns, providing safe and easy routes for walking, cycling, prams, and mobility aids. Nature trails in areas like Mon Repos and Woodgate Beach offer tranquil bushland, with several tracks designed to support inclusive access.

BEACHES & WALKS								
	Accessible Parking on site	Accessible drop-off point on site or nearby	Wheelchair accessible toilet facilities	Ambulant toilet facilities	Accessible shower facilities	Playground facilities near the beach	Barbecue and/or picnic facilities	Detailed information located in Guide
AREA: BARGARA AND CORAL COAST								
Neilson Beach, Bargara	Yes	No	Yes LH (Male) & RH (Female)	No	Yes	Yes	Yes Wheelchair accessible	<a href="#">Page 183</a>
Elliott Heads Beach	Yes	No	Yes LH & RH	Yes	Yes	Yes	Yes Wheelchair accessible	<a href="#">Page 189</a>
AREA: WOODGATE BEACH								
Woodgate Beach	Yes	No	Yes LH & RH	Yes	Yes	Yes (Banksia Park)	Yes Wheelchair accessible next to the new amenities block on the esplanade	<a href="#">Page 193</a>
Banksia Walking Track	No	No	The Woodgate Beach facilities are nearby.					<a href="#">Page 198</a>



# GETTING HERE





# Getting Here

**Getting to the Bundaberg Region is easy. With a growing focus on accessibility, the region welcomes a range of services to help visitors arrive and depart with confidence.**

Situated 385 kilometres north of Brisbane, take the scenic four-hour drive or hop on a quick 45-minute flight from Brisbane to get here.

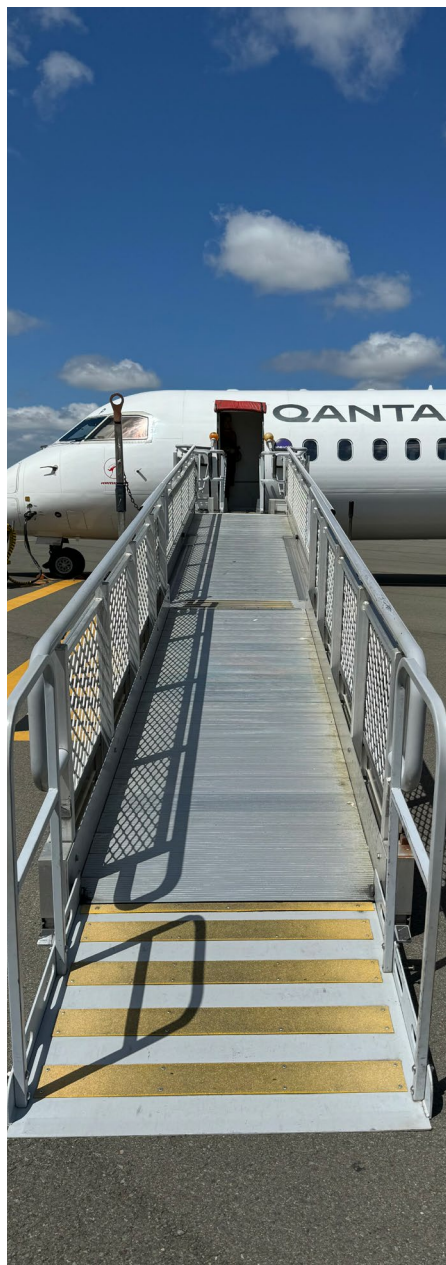
If you prefer not to drive or fly, you can catch the train with Queensland Rail Travel. It is a relaxed and comfortable way to enjoy the scenery of regional Queensland as you travel north.

No car? No worries. Pre-book a ride with Bundaberg Shuttle Services to get to your accommodation. Or, if you'd like to explore on your own, you can hire a car from a local company like Budget Car Rental.

When it comes to getting around the region public transport and Taxi services are available but limited. We encourage you to plan ahead and have provided some information and links within this guide to assist.







# Bundaberg Airport Accessibility Information

**Location:** Airport Drive Bundaberg

**Contact:** 1300 883 699

**Website:** [www.bundaberg.qld.gov.au/airport](http://www.bundaberg.qld.gov.au/airport)

The Bundaberg Regional Airport is located at the western entrance to the city, just a short seven-kilometre trip from the City's Central Business District. There are regular services to and from Brisbane, plus local Lady Elliot Island, Great Barrier Reef departures daily.

## Flights to Bundaberg

Both **QantasLink** and **Link Airways** fly to Bundaberg. QantasLink flies De Havilland Dhc-8 400 Series aircraft to Bundaberg and Link Airways flies both Saab 340B Plus and Metroliner 23 aircraft.

**QantasLink** has a boarding ramp and aircraft aisle wheelchair to move wheelchair users between the tarmac and their seat on the aircraft. Ground staff are able to assist wheelchair users to board and disembark from the aircraft.

**Link Airways** has a disabled passenger lift to enable wheelchair users to board and disembark from the Saab aircraft. Unfortunately the lift is not compatible with the Metroliner 23 aircraft that are occasionally used on this route.



# Bundaberg Airport Accessibility Information

## Parking and Drop-off

There are a total of 14 designated accessible parking spaces across the two airport car parks.

The car park on the right of the entry road has 11 designated accessible parking spaces. There is a wide, step-free path from this car park to the covered walkway that leads to the terminal.

There are three designated accessible parking spaces in the short stay car park to the left of the entry road, directly in front of the terminal. These accessible parking spaces are only to be used for set down and pick up. The path from this car park to the terminal has steps, but there are curved ramps on either side of the steps that provide wheelchair access. The ramps have a clear width of 1000mm between the handrails.

There is also a drop-off area in front of the covered walkway and cars are permitted to remain in this area for two minutes.



# Bundaberg Airport Accessibility Information

## Airport Terminal and Tarmac

There is level access throughout the airport terminal buildings and a ramp, with 1300mm clear width, which provides access from the terminal to the aircraft parking apron.

The security screening team has specific training and protocols to minimise the difficulties that people with disability may experience when going through the security screening process.

Each of the terminal buildings has a hearing loop and people with a compatible hearing aid will receive public announcements directly.

## Food and Drink Outlet

There is a food and drink outlet at the airport with both hot and cold food available. Food is ordered and collected at the service counter, which is 900mm high, but table service is also available on request. The payment system is tap and go.

## Assistance Animals

Only registered assistance dogs are allowed in the terminal.





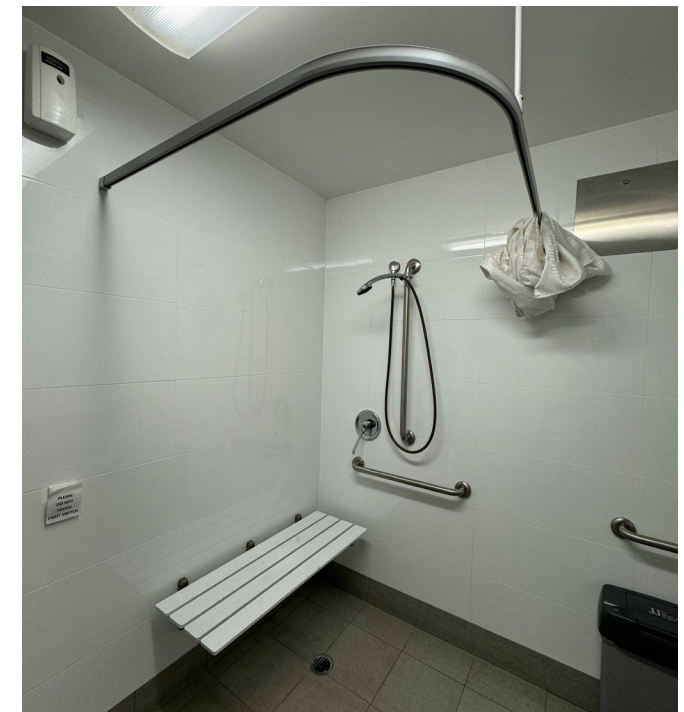
# Bundaberg Airport Accessibility Information

## Airport Accessible Toilet Facilities

There are three all gender accessible toilets at the airport, a LH toilet and shower at the baggage claim area and a LH and a RH toilet in the Departure Lounge/Arrival area (behind security).

### Baggage Area: Accessible toilet and shower

- The door opening has a clear width of 830mm
- Grab rails
- 400mm space alongside the toilet for transfers
- A roll-under sink with mixer tap with lever handle
- A roll-in shower with mixer tap with lever handle
- Adjustable height handheld shower head
- A built-in fold-down shower seat
- 2300mm x 2000mm of clear circulation space



*ID: Baggage area accessible shower.*



# Bundaberg Airport Accessibility Information

Arrivals/Departure Lounge (behind security)

## Accessible toilets

### LH Toilet

- The door opening has a clear width of 830mm
- Grab rails
- 900mm space alongside the toilet for transfers
- A roll-under sink with mixer tap with lever handle
- 300mm x 1700mm of clear circulation space

### RH Toilet

- The door opening has a clear width of 830mm
- Grab rails
- 900mm space alongside the toilet for transfers
- A roll-under sink with mixer tap with lever handle
- 1300mm x 1700mm clear circulation space



*LH Toilet*



*RH Toilet*





# Bundaberg Airport Accessibility Information

## Airport Transfers

### Taxis

13Cabs has maxi-taxis available in Bundaberg. Call 13 2227 to book.

### Bundaberg Shuttle Service

The Bundaberg Shuttle Service has 2 mini-buses and a 26 seater bus. None of the vehicles are wheelchair accessible, however they are able to transport ambulant passengers who have mobility devices. Passengers travelling with mobility devices who wish to use the service should contact the business ahead of time on 0421 413 446 to arrange their pick up so that the room can be provided in the van to carry the device.

### Car rental companies

Avis, Budget Australia, Europcar, Sixt, Thrifty and Hertz operate from the Bundaberg Regional Airport. Please note that none of these companies have wheelchair accessible vehicles currently available for pickup at the airport.



# Bundaberg Railway Station Accessibility Information

**Location:** McLean Street, Bundaberg Central

**Contact:** 13 72 45

Queensland is full of hidden surprises just waiting to be discovered, and what better way to experience them than through the magic of rail. Queensland Rail Travel has a comprehensive network of long distance and tourist trains extending along the Queensland coastline from Brisbane to Cairns. The Bundaberg Railway Station is home to Queensland Rail Travel services connecting visitors with the start of the Southern Great Barrier Reef.

## Trains to Bundaberg

The **Tilt Train**, **The Spirit of Queensland** and **Spirit Of The Outback** services come to Bundaberg.

**Tilt Train** accessibility features include:

- Wheelchair spaces with tie downs
- An all gender accessible toilet
- Onboard hearing loops and captioning
- Braille and tactile signage

Visit the [Tilt Train Accessibility page](#) for further information.





# Bundaberg Railway Station Accessibility Information

## Trains to Bundaberg (continued)

**Spirit Of Queensland** accessibility features include:

- Wheelchair spaces with tie downs
- Wheelchair accessible RailBeds
- An all gender accessible toilet
- Onboard hearing loops and captioning
- Braille and tactile signage

The [Spirit Of Queensland Accessibility page](#) has further information.

**Spirit Of The Outback** has very limited accessibility and full details can be found on the Spirit Of The Outback Accessibility page [here](#).

## Take a virtual tour of Queensland Rail Travel's Trains

Queensland Rail has produced a [Tilt Train Virtual Tour](#), [Spirit of Queensland Virtual Tour](#) and a [Spirit Of The Outback Virtual Tour](#).

## More Queensland Rail Travel accessibility information

Queensland Rail's [Accessibility page](#) links to information about planning travel, what to expect at the station and onboard experience.



# Bundaberg Railway Station Accessibility Information

## Queensland Rail Travel Booking Options

- Online: <https://queenslandrailtravel-booking.opendestinations.com/BookingSite/rail/search>
- Telephone: 1800 872 467
- Assistance with telephone booking: 1300 131 722
- National Relay Service: 1300 555 727 (Voice relay)/133 677 (TTY)

## Railway Station Accessible Parking and Drop-off

There are 3 accessible parking spaces at the front entrance to the station and ramp access from there to the station and Platform 1. There are also two accessible parking spaces near the station on McLean St.

The drop-off point is also close to the front of the station.

This [Queensland Rail Bundaberg Station walkthrough video](#) includes the approach to the station and parking.



*Image ID: Designated accessible parking spaces with clear signage and blue markings located near a ramp leading to the entrance of the railway station.*





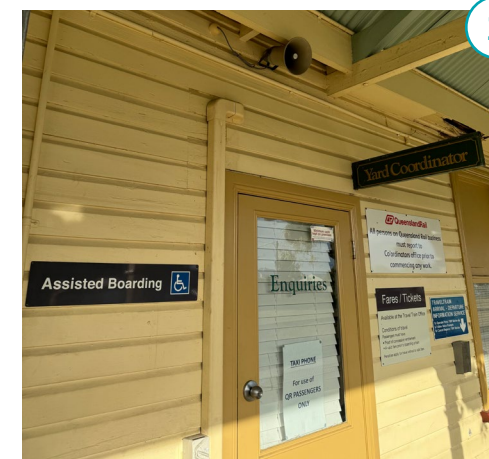
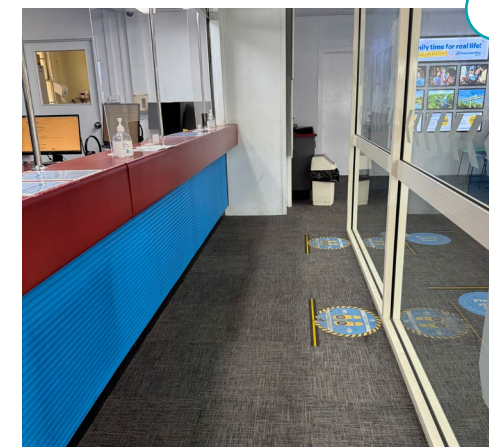
# Bundaberg Railway Station Accessibility Information

## Railway Station Entry, Ticket Counter and Waiting Area

The main entrance into the station is wheelchair accessible. There is an automatic sliding door with a clear opening width of 1100mm and level access throughout the ticket area and waiting area. The ticket counter is 1100mm high. The waiting area has ample seating and an 1100mm wide ramp providing access to Platform 1.

## Passenger Announcements

All passenger announcements at the station are communicated via audio. The hearing loop is along the southern end of the platform and there are hearing loop signs on the platform indicating where it is in place.



1. Image ID: The service counter in the station.

2. Image ID: The assisted boarding sign and audio information button near the Yard Coordinators Office.





# Bundaberg Railway Station Accessibility Information

## Platforms

There is level access along the platforms and tactile ground surface indicators along the platform edges. An information button, near the Yard Coordinator's office, provides audio information on arrivals and departures and there is braille/ tactile signage above the button to indicate its location.

The Yard Coordinator is responsible for providing assisted boarding and disembarkation for passengers with accessibility requirements and there is a meeting point outside the Yard Coordinators office. There is also a 13cabs call button inside the office.

There is a portable boarding ramp on the platform that is used for wheelchair access on and off the Tilt Train and Spirit of Queensland.



1. Image ID: The service counter in the station.

2. Image ID: The assisted boarding sign and audio information button near the Yard Coordinators Office



# Bundaberg Railway Station

## Accessibility Information

### Accessible Toilet Facilities

There is an all gender accessible toilet off Platform 1. There is a 1300mm wide ramp leading to a landing in front of the cubicle door, which has a clear opening width of 840mm. The cubicle has an area of 2000m x 2900mm.

The facilities include:

- RH toilet
- Grab rails
- Roll-under sink
- Mixer tap with lever handle.

There is approximately 1400mm clear space alongside the toilet for transfers.

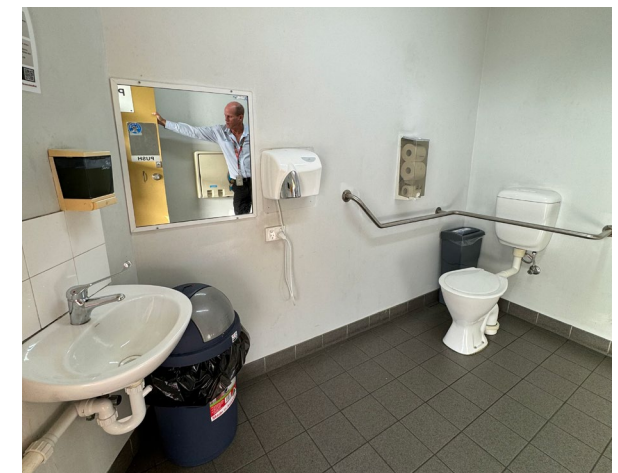


Image ID: RH Toilet

### Assistance Animals

All certified assistance animals are welcome on Queensland Rail trains and stations. The [Travelling with a guide, hearing or assistance animal webpage](#) provides further information on the forms of animal identification that are accepted by Queensland Rail.





# Bundaberg Railway Station Accessibility Information

## Sensory Aspects

When trains arrive and depart the station the platform can be crowded and noisy in a concentrated area but there are quieter spots outside of that zone. There is currently no designated quiet space at the station.

Sometimes large locomotives come through the station and they are loud. Cattle trains also pass through the station and they may have a strong smell.

The [Queensland Rail Bundaberg Station walkthrough video](#) can be helpful for previewing what it will be like at Bundaberg Railway Station.



## Listen to Vacayit Audio Guides

Scan the QR code or visit [www.vacayit.com/tilt-train-overview](http://www.vacayit.com/tilt-train-overview) to hear more about your Tilt Train experience with Queensland Rail Travel.





# Bundaberg Greyhound Bus Stop Accessibility Information

**Location:** Bus Stop 3, Barolin St Bundaberg

**Greyhound Australia Call Centre:** 1300 473 946

**Website:** <https://www.greyhound.com.au/>

## Greyhound Australia, Bundaberg

Greyhound Australia, truly explores every inch of Australia's vast beauty, covering Queensland from the Gold Coast to Brisbane, up to the Sunshine Coast and all the way to Cairns.

From their hometown of Toowoomba in Queensland, they now travel to over 180 stops around the country with services in every mainland state and territory. Take in the rugged landscapes of city, coast and country as you relax in your reclining seat onboard their modern, environmentally friendly Greyhounds and let them drive.

From selecting your seat online, enjoying the free onboard WiFi, to stepping off at your destination, you'll feel the difference that almost 100 years of experience makes.

Feel welcomed, feel cared for, and feel excited for what's next as you journey with Greyhound Australia, to and from the Bundaberg Region.



# Bundaberg Greyhound Bus Stop Accessibility Information

## Greyhound Australia Bus Service Accessibility

Greyhound Australia is progressively upgrading its entire fleet to Easy Access coaches. If passengers book their tickets 24 hours or more in advance, Greyhound can ensure that an Easy Access bus is assigned to that route for the customer's trip.

Easy Access coaches have a built-in wheelchair access lift to enable manual wheelchair users to board the coach and all Greyhound Australia staff are trained to use the wheelchair lift. Unfortunately the coaches cannot accommodate electric wheelchairs and the maximum weight of manual wheelchairs that can be carried is 20kg. There are no tie downs in the coaches so wheelchairs users will need to transfer themselves, or transfer with the assistance of a carer, from their wheelchair to the bus seat. Wheelchairs will need to be stowed in the luggage hold by Greyhound Australia staff, who will also bring the wheelchair to the customer at their arrival point.

For further information, consult the [Easy Access Services FAQs](#).



# Bundaberg Greyhound Bus Stop Accessibility Information

## Assistance Animals onboard Greyhound Australia Services

Greyhound Australia welcomes certified assistance animals but the company asks that handlers contact the customer call centre in advance to plan their travel (see [Greyhound Australia's Travel Assistance page](#) for further details).

## Greyhound Australia Booking Options

- **Online:**
- **Telephone: 1300 473 946**
- For accessibility enquiries, email [easyaccess@greyhound.com.au](mailto:easyaccess@greyhound.com.au)

Greyhound Australia provides a 50% discount on tickets purchased for a carer travelling with a person who has a disability and welcomes certified assistance animals (see [Greyhound Australia's Travel Assistance page](#) for further details).

## Bus Stop Accessible Parking and Drop-off Point

There is an accessible parking space on Barolin St, near the Post Office. There is a curb cut in front of the space that provides access to the footpath that leads to the stop. There are also two 10-minute parking spaces on Post Office Lane, next to the bus stop, for drop-offs and pick-ups.





# Bundaberg Greyhound Bus Stop Accessibility Information

## Bus Shelter and Nearby Amenities

There is covered bench seating at the bus stop with ramped access from the footpath where passengers board and alight from the bus.

There is a curb ramp in front of the Bundaberg Regional Art Gallery, which is next to the bus shelter, which provides level access to cross Barolin Street. There is also a level pedestrian crossing on the other side of the bus stop, further along Barolin Street.

There is a level pathway from the bus stop to the all-gender accessible toilet facilities behind it. There is an accessible drinking fountain along the path, with 500mm of clear paved space on either side of it.



1. Image ID: Street view of bus shelter with nearby accessible parking space.
2. Image ID: Front of the bus shelter on Barolin Street with ramp access and grab rails.



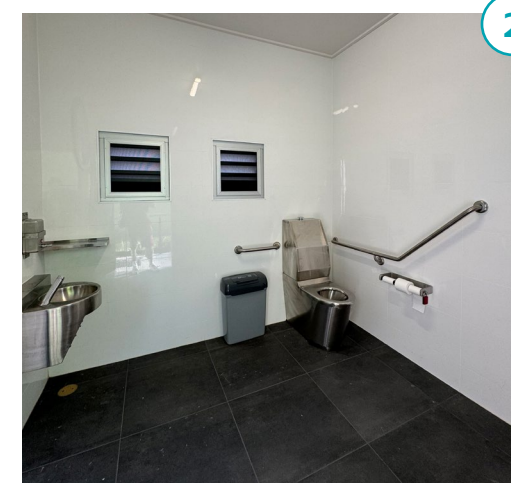
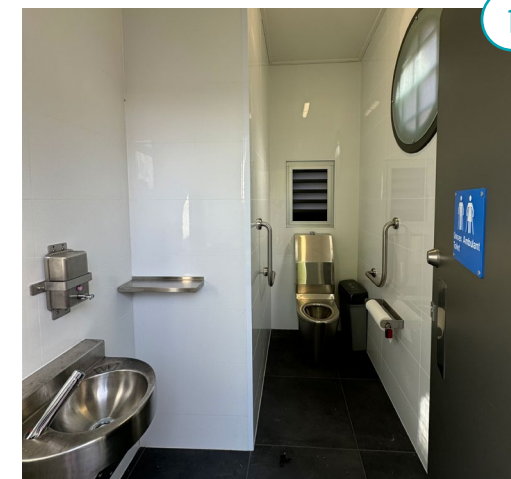
# Bundaberg Greyhound Bus Stop Accessibility Information

## Accessible Toilet Facilities

There is a level pathway from the bus stop to the all-gender accessible toilet facilities behind it. The accessible toilet facilities include an ambulant toilet cubicle and LH and RH all gender accessible toilet cubicles.

The accessible toilet cubicles include:

- A doorway with a clear opening width of 920mm
- Grab rails
- A roll-under hand basin
- A mixer tap with a push button handle



1. Image ID: All Gender ambulant toilet cubicle

2. Image ID: LH accessible toilet cubicle



# TOURS & ATTRACTIONS







# Alexandra Park Zoo

## Accessibility Information

**Location:** Corner of Quay and Burrum Streets, Bundaberg

**Contact:** 1300 883 699

**Website:** [www.discoverbundaberg.com.au/bundaberg-zoo](http://www.discoverbundaberg.com.au/bundaberg-zoo)

Alexandra Park Zoo is a small, friendly zoo in the heart of Bundaberg, set among shady trees in Alexandra Park along the Burnett River. Opened in 1911, it's one of Queensland's oldest zoos and has been welcoming visitors for over 100 years.

The zoo is free to enter and features a variety of animals including cotton-top tamarins, dingoes, lizards, snakes, birds, wallabies, and emus. It's a great place to learn about local wildlife and how we can help protect it. Keep an ear out for the sounds of native birds, frogs, or even the deep call of an emu.

During school holidays, you can enjoy zookeeper talks, animal feeding sessions, and interactive encounters with animals like snakes and quolls.

After your visit, enjoy the nearby playground, picnic spots, or take a riverside walk on the flat, 3km shared pathway.





# Alexandra Park Zoo

## Accessibility Information

### Accessible Parking and Drop-off

There are 3 accessible parking spaces on Quay St, at the main entrance to Alexandra Park. There are curb ramps from the shared areas between the parking spaces that provide step-free access to the main entrance to Alexandra park. There is also a drop-off point at the entrance.

### Zoo Entry and Circulation

There is a wide level path from the accessible parking and drop-off point into the park and to the Zoo entrance

There are step-free paved pathways throughout the zoo. The path from the Zoo's entry gates towards the animal enclosures is a little steep and there is a checker plate strip over a small lip in the pathway just past the gates, so some wheelchair users may appreciate assistance to get to the enclosures.

The zoo area is quite compact and visitors only need to walk about 100m to see all of the enclosures. Benches have been provided for people to sit and rest. There is also a wheelchair accessible drinking fountain.



# Alexandra Park Zoo Accessibility Information

## Animal Enclosures

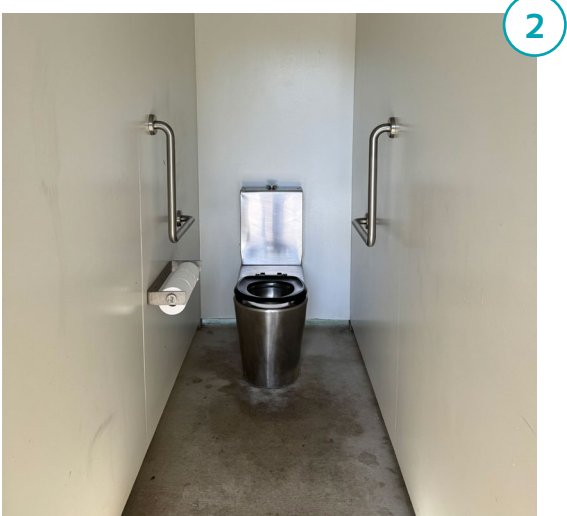
All of the animal enclosures can be viewed from a wheelchair. There is a QR code on the Quoll enclosure that enables visitors to download more information.

## Accessible Toilets

There are two blocks of toilets located in the park, close to the pathway between the park entrance and the Zoo and there is level access to both blocks. Each toilet block has an all gender accessible toilet cubicle with:

- A doorway with a clear opening width of 880mm
- A RH toilet
- A roll-under sink
- A tap with a lever handle
- 1800mm of clear space of transfers

The toilet blocks also have all gender ambulant toilets cubicles.



1. Image ID: Front on view of glassed reptile enclosures with signage above.

2. Image ID: Ambulant Toilet.





# Alexandra Park Zoo Accessibility Information

## Alexandra Park pathways and circulation

The park has level terrain and an extensive network of wide, paved and step-free pathways linking all of the main features, including the playground, the Fig Tree Gardens, the zoo, the picnic areas and the accessible toilets. There are also some sections of timber decking that bridge over natural gullies on the site.

There is also a path that runs along the back of the park, which overlooks the Burnett River. There is a 1300mm high safety fence running parallel to the path as the riverbank drops away very steeply. The fence continues to the bowling club end of the park where it stops.

## The Fig Tree Gardens

There is a ramped path with decorative paving running through the Fig Tree Garden. The path ends in stairs but a 2000x2000mm landing has been provided at the top for wheelchair users to turn around.



1. Image ID: Path from the main entrance to Alexandra Park Zoo  
2. Image ID: Pathway and fence along the Burnett River edge of the park.





# Alexandra Park Zoo Accessibility Information

## Picnic and Barbeque Shelters

There are several wheelchair accessible picnic tables in the park, including next to the canon display at the main entrance and close to the Fig Tree Gardens.

## Playground

The playground surface is a mixture of rubber soft-fall, sand and pine bark. The play equipment includes a wheelchair accessible carousel and a bird nest swing, as well as conventional play equipment. There is a lot of natural shade around the park and playground.



1. Image ID: Sheltered picnic tables under trees

2. Image ID: Wheelchair accessible carousel.





# Alexandra Park Zoo Accessibility Information

## Assistance Animals at Alexandra Park Zoo

Guide dogs are welcome at the zoo. Guide dog handlers should be aware that the dingoes can react to dogs that are brought into the zoo.

## Sensory Aspects

The Bingera Street end of the park is quieter with less equipment if people want some time away from the bustle of the Zoo and playground.

Entry to the Zoo is free, and visitors can leave and re-enter easily.



1

1. Image ID: Bingera Street end of Alexandra Park area.



## Listen to Vacayit Audio Guides

Scan the QR code or visit [www.vacayit.com/alexandra-park-zoo](http://www.vacayit.com/alexandra-park-zoo) to hear more about the Alexandra Park Zoo experience.



# Bundaberg Brewed Drinks Barrel Accessibility Information

**Location:** 147 Bargara Road, Bundaberg

**Contact:** 07 4154 5480

**Website:** [bundabergbarrel.com](http://bundabergbarrel.com)

Step inside the iconic Bundaberg Barrel and discover the secrets behind Bundaberg Brewed Drinks' world-famous brews. This fun and interactive visitor experience takes you on a self-guided journey through the art of craft brewing, showcasing the real ingredients and time-honoured methods behind every bottle.

Explore hands-on displays, challenge your senses at the smell wall, and get an insider's look at the brewing process through immersive 360° video experiences. After your tour, enjoy a guided tasting of Bundaberg's full range of brews and mix your own take-home six-pack of favourites.

The Bundaberg Barrel is accessible and welcoming to all visitors, with wheelchair-accessible facilities and a friendly team ready to help make your visit as enjoyable and comfortable as possible.





# Bundaberg Brewed Drinks Barrel Accessibility Information

## Booking Options

The Companion Card is accepted.

- **Online:** [bundabergbarrel.com/pages/tasting-self-guided-gallery-tour-booking](https://bundabergbarrel.com/pages/tasting-self-guided-gallery-tour-booking)
- **In-person at The Barrel**
- **Telephone:** 07 4154 5480
- **Email:** [visitors@bundaberg.com](mailto:visitors@bundaberg.com)

## Accessible Parking

There is an accessible parking space at the rear of the venue and step-free access from there to the entrance of Bundaberg Brewed Drinks Barrel.

## Entry & Reception

The main entrance is wheelchair accessible and the front door is automatic with a clear width of 820mm. There is step-free access throughout the building. The reception counter has a lower height section to accommodate wheelchair users.



1. Image ID: Even path leading towards the entrance of the Barrel with lush hedging framing the pathway edges.



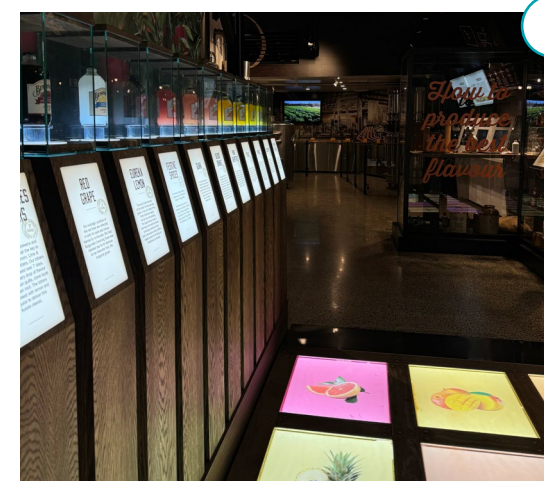
# Bundaberg Brewed Drinks Barrel Accessibility Information

## Self-guided Tour & Guided Tasting

The self-guided Tour and Guided Tasting take approximately 45 minutes to an hour to complete and covers a distance of approximately 100m.

The self-guided tour goes through a gallery space that shows visitors how the drinks are brewed and bottled. The Smellography console is 1000mm high but it sits on a low plinth that may make it inaccessible to some wheelchair users. However, the three 360o cameras that show the factory in action and the viewing panels into production tanks can be viewed from a wheelchair and the touch screen that enables visitors to create their own Bundaberg Brewed Drinks label is wheelchair accessible.

There is also a large text interpretive signage that explains the brewing process step by step and a captioned video that tells the story of Bundaberg Brewed Drinks' founders.



1. Image ID: The Gallery area within self-guided tour.

2. Image ID: Viewing window into silver fermenting barrel with a family peering into see what is bubbling.





# Bundaberg Brewed Drinks Barrel

## Accessibility Information

### Guided Tasting

During the guided tasting, visitors stand at the 970mm high bar. The area around the tasting bar can be widened to accommodate wheelchair users. The counter staff are able to hand drink samples directly to visitors.

### Gifts & Shop

There is a shop on site where visitors are able to purchase bottled drinks and a range of merchandise. Most of the items are reachable from a wheelchair. The aisles in the shop are a minimum of 1100mm wide. Payment can be made in cash or with tap and go or tactile EFTPOS.



1. Image ID: Visitors standing at the tasting bar, sampling a variety of Bundaberg Brewed Drinks.

2. Image ID: A visitor picking up six drinks for a custom take-home pack.



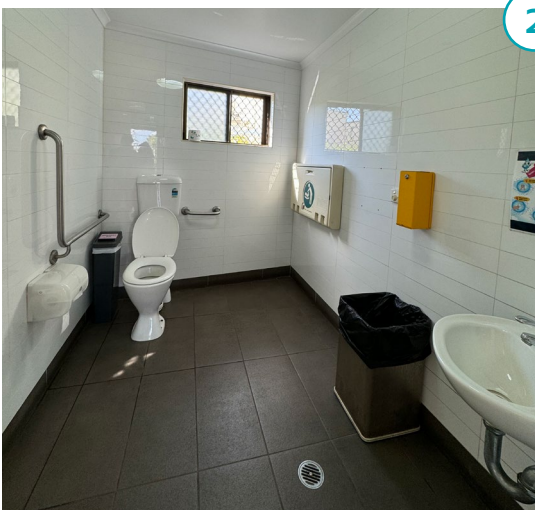
# Bundaberg Brewed Drinks Barrel Accessibility Information

## Accessible Toilet Facilities

There is an all-gender accessible toilet located in a separate building off the rear courtyard, with step-free access between the two buildings. The entry door has a clear opening width of 820mm.

The accessible toilet includes:

- A RH toilet
- Grab rails
- Approximately 1200mm clear space for transfers
- Approximately 2000x1600mm clear circulation space
- A roll-under sink
- A mixer tap with lever handles



1. Image ID: Entrance to the toilets.  
2. Image ID: RH Toilet with grab rails and roll-under sink.





# Bundaberg Brewed Drinks Barrel

## Accessibility Information

### Assistance Animals

Certified assistance animals are welcome at Bundaberg Brewed Drinks. There are gardens out the back by the tree for the dog's toileting needs

### Sensory Aspects of the Venue

If visitors are at the venue when brewing is taking place, they may smell ginger. The Smellography Wall includes a "Guess The Flavour" activity where visitors can press a button to release a scent. These smells can only be detected close to the console.

This venue can be noisy due to the acoustics and the activities that take place here. Staff are able to turn down the volume of music and audio if requested to do so. There is also seating in an outdoor courtyard at the rear of the Barrel



### Listen to Vacayit Audio Guides

Scan the QR code or visit [www.vacayit.com/bundaberg-brewed-drinks-barrel](http://www.vacayit.com/bundaberg-brewed-drinks-barrel) to hear more about The Barrel's tours and accessibility features.



# Bundaberg Rum Visitor Experience

## Accessibility Information

**Location:** Hill Street, Bundaberg QLD 4670

**Contact:** 07 4383 3443

**Website:** [www.bundabergum.com.au/distillery/visit-us.html](http://www.bundabergum.com.au/distillery/visit-us.html)

Discover the home of Australia's iconic Bundaberg Rum, proudly made in Bundaberg for over 135 years. Located by the Burnett River, the distillery offers a behind-the-scenes look at how rum is made from local ingredients.

Visit the museum to learn about the brand's rich history, enjoy tastings of award-winning rums, or even blend your own to take home. The on-site store and bar are great for picking up souvenirs and trying something new.

The distillery is accessible, welcoming visitors of all abilities. The team at Bundaberg Rum Distillery is committed to making sure every visitor feels welcome and included. If visitors have questions or need help planning their visit, the friendly staff are happy to assist.

Accessibility is more than a feature at the Bundaberg Rum Distillery — it's a priority. The distillery strives to create a relaxed and inclusive environment where everyone can enjoy the stories, flavours and spirit that make this iconic destination so special.





# Bundaberg Rum Visitor Experience

## Accessibility Information

### Booking Options

The Companion Card is accepted but the Companion ticket has to be booked over the phone

- **Online:** [www.bundabergum.com.au/distillery/book-a-tour.html](http://www.bundabergum.com.au/distillery/book-a-tour.html)
- **In-person**
- **Telephone:** 07 4348 3443
- **Email:** [arrivals@bundabergum.com](mailto:arrivals@bundabergum.com)

### Accessible Parking and Drop-off

There are two designated accessible parking spaces, with a shared area in between them, in the car park directly in front of the visitor entrance to Bundaberg Rum Distillery and a step-free path from there to the front door.

#### Drop-off point:

Visitors can be dropped off in the accessible parking spaces or in the coach parking bay at the front of the building. There is a curb ramp at the pedestrian crossing near the end of the coach bay.



1. Image ID: Accessible Parking spaces at front of the Bundaberg Rum Visitor Experience.



# Bundaberg Rum Visitor Experience

## Accessibility Information

### Entry and Reception

The main entrance is wheelchair accessible and has automatic double sliding doors. There is a step-free path to the reception area and a wide ramp from reception to the Museum area.

### Bundaberg Rum Museum Experience

The Museum Experience takes about 30 minutes and includes a range of exhibits, including the famous Bundy Bear, and information about the history of Bundaberg Rum, the distilling process and the company's community outreach. Most of the information is viewable or reachable from a wheelchair. Some of the information is in large text with high contrast but it is not yet available in digitally accessible formats.

The exhibits are arranged within large barrels from the distillery that have been repurposed as themed galleries. There is level and wide access through the barrels and a wide ramp that leads down to the "great wall of Bundy", a large display of almost every Bundaberg Rum product along the back wall of the museum. There is bench seating opposite the wall where visitors can sit and contemplate the display. Visitors exit the museum through a 1200mm wide automatic door and level access out to the Alfresco area.





# Bundaberg Rum Visitor Experience

## Accessibility Information

### Alfresco Area

The alfresco area is a large and level courtyard that sits between the museum and the Bundaberg Rum retail store. The alfresco area has regular height tables and chairs and visitors can order drinks from two bars nearby. Table service is available for visitors with accessibility requirements.

### The Bundaberg Rum Retail Store

There is wide and level access into the store from both the alfresco area and the front of the premises and level access throughout the store. The store stocks a range of Bundaberg Rum products and merchandise and also houses the Bundaberg Rum Tasting Bar. Most of the goods are reachable from a wheelchair. Payment options include cash, tap and go and tactile EFTPOS.



1. Image ID: Group of friends clinking glasses as a high table in the alfresco are with big grins.
2. Image ID: Visitor in the Bundaberg Rum store picking out a branded t-shirt.

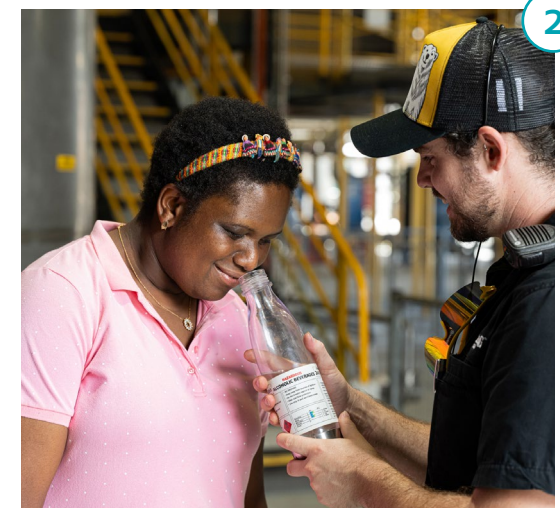


# Bundaberg Rum Visitor Experience Accessibility Information

## Guided Bundaberg Rum Visitor Experience

Bundaberg Rum Visitor Experience is committed to providing an inclusive visitor experience and will provide additional guides if needed to ensure that visitors with accessibility requirements can experience the tour as fully as possible. Please let them know about any accessibility requirements you may have so they can plan ahead for your visit.

The guided tour lasts for 1 hour, not including the museum and stops at the Molasses Well, The Fermentation Room and the Barrel Room and finishes at the retail store for a tasting at the Bundaberg Rum Tasting Bar. There are opportunities to sit down along the way and additional shade has been provided at some stops.



1. Image ID: Guest with assistance dog and a Bundaberg Rum Expert Guide at the molasses well viewing window.
2. Image ID: Guest on tour smelling raw rum from the bottle with a Bundaberg Rum Expert Guide.





# Bundaberg Rum Visitor Experience Accessibility Information

## Guided Bundaberg Rum Visitor Experience (Continued)

### The pathway to the distillery and terrain

To reach the distillery from the visitor centre, visitors need to go over a steep ramp and walk over several sets of sugar cane railway tracks that cross the bitumen pathway between the two areas. The distance is about 70m. There are areas between the buildings that can also have uneven surfaces.

Bundaberg Rum staff can assist wheelchair users to traverse the ramp and previous visitors who are wheelchair users have recommended going backwards over the rail tracks. There is a wheelchair available on site for visitors.

### The Molasses Well

The first stop on the tour is the molasses well, which sits inside a large shed. There is an elevated walkway through this area but a viewing window with sill height of 900mm, has also been provided to enable visitors with reduced mobility to view the well.



1. Image ID: Starting point for tours adjacent to toilet facilities.

2. Image ID: Guests inside the molasses well on the elevated walkway.



# Bundaberg Rum Visitor Experience Accessibility Information

## Guided Bundaberg Rum Visitor Experience (Continued)

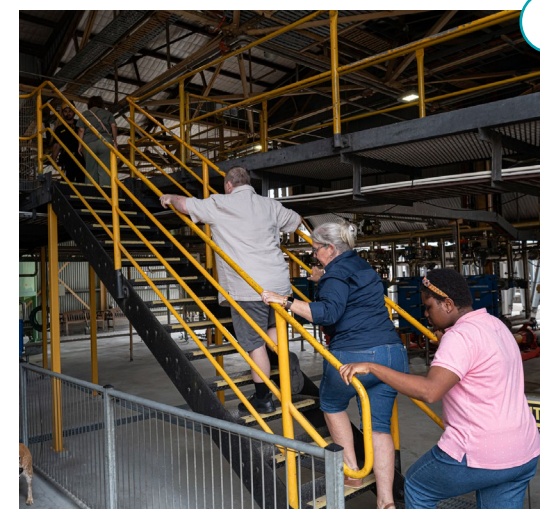
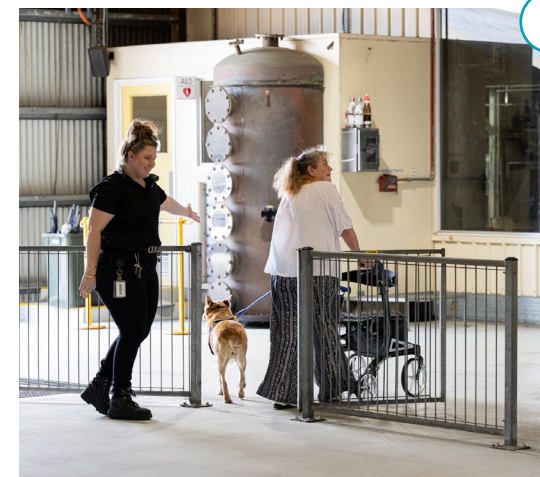
### The Fermentation Area

The next stop is the fermentation area which has wide and level entry. There are elevated walkways through this area but there is also an alternative step-free route.

### The Barrel House

The final stop on the tour is the Barrel House. There is a stepped entry which takes visitors over a glass topped tank which shows the rum being aerated but there is also a step-free entrance with a clear opening width of 790mm. The Barrel House is also where the Blend Your Own Rum Experience takes place and a regular height blending table can be set up for people with accessibility requirements.

Tour guides use a microphone and portable speakers to amplify their voices but there is no hearing augmentation system in place.



1. Image ID: Guest using mobility aid enters Fermentation area via step-free path, guided by Bundaberg Rum Expert.

2. Image ID: Guests using stairs to reach the elevated fermentation viewing area.





# Bundaberg Rum Visitor Experience Accessibility Information

## Guided Bundaberg Rum Visitor Experience (Continued)

### Battery powered devices

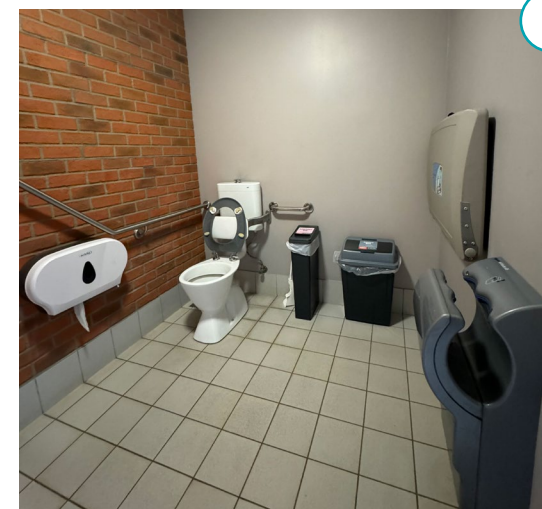
For safety reasons, devices with batteries, including phones, are not generally permitted on the tour (free lockers are provided to store these devices). However, where visitors have medically necessary devices such as hearing aids and mobility scooters, alternative arrangements can be made to ensure that they can experience the tour safely. It's helpful to let staff know at the time of booking if you use medically required battery operated devices.

### Accessible Toilet Facilities

There is an accessible toilet on site. The toilet cubicle includes:

- An entry door with a clear width of 880mm.
- A RH toilet.
- Grab rails.
- A roll-under sink.
- Mixer tap with a lever handle.
- 1200mm of clear space alongside the toilet for transfers.
- 1600 x 1600mm of clear circulation space.

There are also ambulant toilet facilities.



1. Image ID: RH Accessible Toilet with RH Grab rail, bins, changing table and hand dryer pictured.



# Bundaberg Rum Visitor Experience

## Accessibility Information

### Assistance Animals

Certified assistance animals are welcome.

### Sensory Aspects

The environment can be noisy because of the factory machinery and occasional sugar cane trains moving to and from the nearby sugar mills. Visitors may wish to bring headphones.

There may be also be strong smells from the fermentation process, as well the smell of molasses and creosote at the molasses well

Staff are able to lower the volume of music in the shop, the alfresco area and the museum in response to a request from a visitor.



### Listen to Vacayit Audio Guides

Scan the QR code or visit [www.vacayit.com/bundaberg-rum-distillery](http://www.vacayit.com/bundaberg-rum-distillery) to hear more about the Bundaberg Rum Visitor Experience.





# Bundy Bowl and Leisure Centre Accessibility Information

**Location:** 17 Lester St Bundaberg

**Contact:** 07 4152 4334

**Website:** [www.bundybowl.com.au](http://www.bundybowl.com.au)

Welcome to Bundy Bowl & Leisure Centre – regional Queensland’s largest indoor entertainment hub. With tenpin bowling, laser tag, dodgems, arcade games and more, this all-in-one venue is the place to go for fun, excitement and family-friendly adventures.

At Bundy Bowl & Leisure Centre, we are committed to ensuring our venue is as accessible and welcoming as possible for all visitors. Our staff have received disability awareness training, and are ready to welcome visitors with access needs.

For any further questions or specific requirements, please contact us ahead of your visit, and we’ll do our best to accommodate your needs.

## Booking Options

- Online: [www.bundybowl.com.au](http://www.bundybowl.com.au)
- In-Person
- Telephone: 07 4152 4334
- Email: [peter@bundybowl.com.au](mailto:peter@bundybowl.com.au)



# Bundy Bowl and Leisure Centre Accessibility Information

## Parking and Drop-off

There are 2 designated accessible parking spaces at the side entrance to Bundy Bowl. Visitors can also be dropped off close to the side entrance. There is a step-free path to the door of the side entrance, although the curb cut is somewhat steep and some wheelchair users may require assistance to reach the footpath.

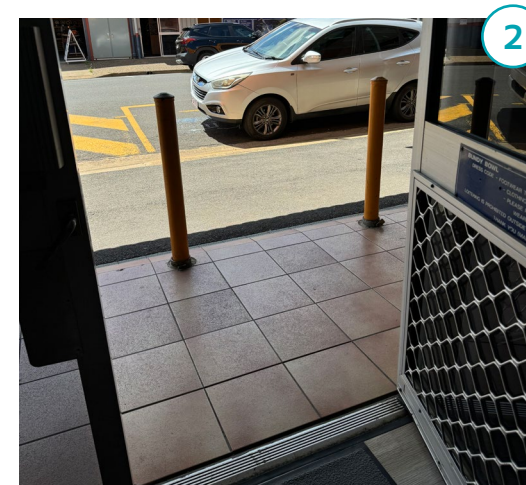
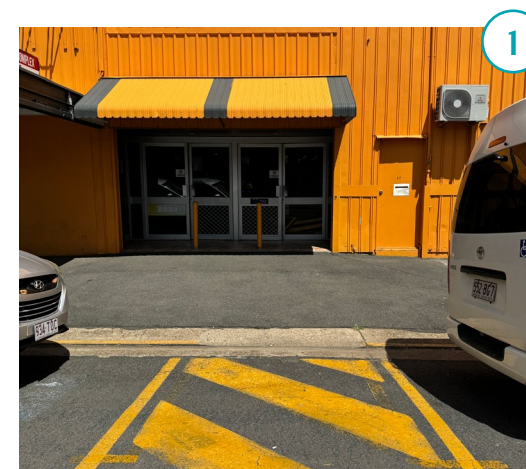
## Entrance

The side entrance to the building is wheelchair accessible. The door has a clear opening width of 1800mm and there is a step-free path to reception.

## Circulation

There is level or ramp access throughout the ground floor. The upper level, which contains the Escape Rooms, ShuffleBoard and Laser Tag, can only be accessed via stairs.

The main pathways through the venue are a minimum of 1500mm.



1. Image ID: Side Entrance street view

2. Image ID: Side entrance doorway





# Bundy Bowl and Leisure Centre Accessibility Information

## ACTIVITIES AND EXPERIENCES

### Ten Pin Bowling

The bowling area is wheelchair accessible. Bundy Bowl has the following adaptive equipment:

- Bowling ramps
- Bowling bumpers
- Handle bowling balls

### Cyber City Games Arcade

The Cyber City Games Arcade has a range of games including ball games, shooting games and skill games. The pathway through this area are approximately 1500mm wide. Some of the games can be played from a wheelchair and none of the games require hearing in order to play. The background noise level in the arcade is loud. Bundy Bowl will lower the volume of the background music upon request and the volume of some games can also be lowered for individual players.



1. Image ID: Girl cheering at Ten Pin Bowling

2. Image ID: Girl smiling while playing one of the Cyber City Arcade Games



# Bundy Bowl and Leisure Centre Accessibility Information

## ACTIVITIES AND EXPERIENCES

### Escape Rooms

The Escape rooms are located on the upper level and can only be accessed via stairs. The Escape Room puzzles can be solved without hearing and instructions can be provided in writing.

### Laser Tag

Laser tag sessions run for 15 minutes and instructions can be provided in writing for people with hearing loss.

It is not possible to alter the lighting effects but the music can be turned down if requested.

### Dodgems

The dodgem car sessions are 5 minutes. Instructions can be provided in writing for people with hearing loss. The rim of the dodgem care arena is 300mm above floor level and there is a 180mm step down into the arena. A step is provided at the entry to the arena.





# Bundy Bowl and Leisure Centre

## Accessibility Information

### ACTIVITIES AND EXPERIENCES

#### Jurassic Putt

The course is not wheelchair accessible, but wheelchair users are able to spectate from just inside the area. The course pathways are approximately 1200mm wide but can be as narrow as 700mm in some places. There are also some course obstacles on the pathways and 150mm high barriers between some holes.

The holes and the edges of the pathways through the course are highlighted with bright fluoro lighting, but the rest of the space is dark.

The sound levels can be lowered but the lighting cannot be modified.



1. Image ID: Group of friends lined up with their golf clubs ready to enter Jurassic Putt.



# Bundy Bowl and Leisure Centre Accessibility Information

## ACTIVITIES AND EXPERIENCES

### Wild West Shootout

The aim of this game is to shoot nerf balls into baskets on the opposing side. The balls are dropped into the top of the shooters and air propels them across the room. The game doesn't require manual dexterity in order to play, instructions can be provided in writing and participants do not need hearing to play this game.

This game can be played from a wheelchair, although the approach to the Shootout area is approximately 900mm wide and the entry door has a clear width of 800mm. There is 1000mm clear space in front of the guns and the hole that the balls are dropped into is approximately 1000mm high.



1. Image ID: Wild West Shootout nerf equipment.





# Bundy Bowl and Leisure Centre Accessibility Information

## ACTIVITIES AND EXPERIENCES

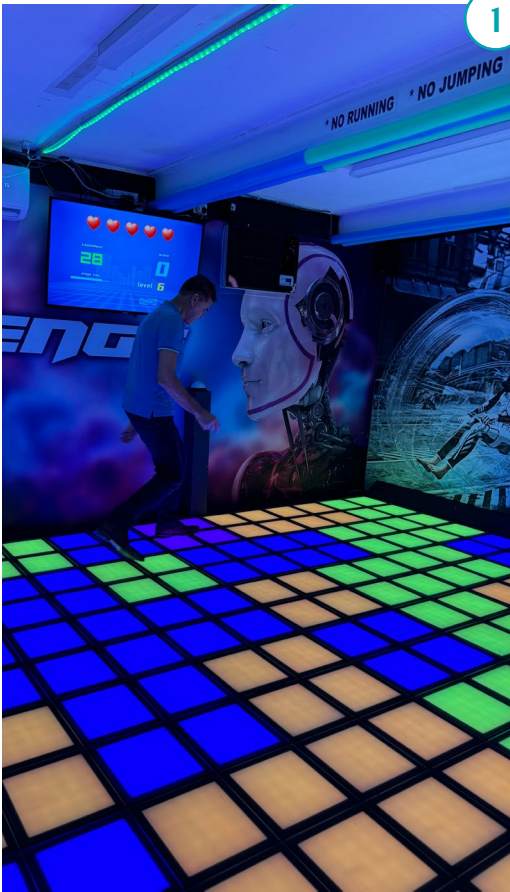
### Matrix Challenge Interactive Floor Game

Matrix Challenge Interactive Floor is so much Fun! (like the Floor is Lava!) Step on Blue to get points. Don't step on Red.

There are game selection options that enable participants to select levels of pace and challenge. The sound of the game can also be turned down. The entry door to the area has a clear width of 800mm and the gateway to the arena has a clear width of 750mm. Spectators can also view the game from outside the room, where there is more space

### Karaoke

Book an hour of Fun with your family or friends in our Karaoke room where everyone is a "Star!". Bookings include songs, a host, Karaoke machine, disco lighting, wireless microphone, plus Platters and drinks can be delivered to your group. The entry door has a clear width of 800mm.



1. Image ID: A Man participating in the Matrix Challenge floor game



# Bundy Bowl and Leisure Centre Accessibility Information

## Cafe

There are regular height tables and seating as well as high tables and stools. The furniture can be moved to accommodate wheelchair users. There are wide circulation paths through this area.

The cafe menu is available in large print and can be downloaded on site from a QR code. Food can be ordered at the service counter or from a QR code on the table. The service counter has a lowered height section that is 970mm high. Food is collected from the counter but table service is also available on request.

Payments can be made using cash or Mobile EFTPOS.

## Assistance Animals

Certified assistance animals are welcome at the Bundy Bowl.



1. Image ID: Cafe service counter  
2. Image ID: Cafe indoor seating area with tables and chairs





# Bundy Bowl and Leisure Centre Accessibility Information

## Accessible Toilet Facilities

There is an accessible toilet cubicle in both the Female and Male toilets.

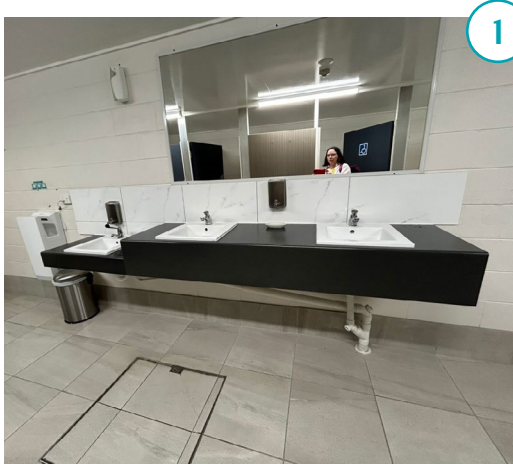
### Female accessible toilet

There is a curved access ramp leading to the entry to the Female toilets facilities. The ramp has a clear width of 1200mm.

- The cubicle has a clear opening width of 850mm
- A LH toilet
- Grab rails
- 1000mm clear space alongside toilet for transfers
- Roll-under hand basin (outside of the cubicle)
- Mixer tap with lever handle

### Male accessible toilet

- The cubicle has a clear opening width of 850mm
- A RH toilet
- Grab rails
- 1000mm clear space alongside toilet for transfers
- Roll-under hand basin (outside of the cubicle)
- Mixer tap with lever handle



1. Image ID: Roll-under hand basin in female toilet.



# Bundy Bowl and Leisure Centre Accessibility Information

## Sensory Aspects

There is no dedicated quiet space at the venue but the Karaoke space, which is in a quiet part of the venue and has soft ottoman seating, is available to visitors as a quiet space if it is not in use.

There are no designated quiet hours but there are times of the week when the venue is usually less busy. Visitors are welcome to call the venue to identify some quieter times.

The Bundy Bowl is usually very busy and more noisy on Friday and Saturday nights and during the school holidays.



## Listen to Vacayit Audio Guides

Scan the QR code or visit [www.vacayit.com/bundy-bowl-leisure-centre](http://www.vacayit.com/bundy-bowl-leisure-centre) to hear more about Bundy Bowl and Leisure Centre.





# Fairymead House Sugar Museum Accessibility Information

**Location:** Bundaberg Botanic Gardens, Thornhill Street Entrance

**Contact:** 07 4130 4400

**Website:** [www.discoverbundaberg.com.au/fairymead-house-sugar-museum](http://www.discoverbundaberg.com.au/fairymead-house-sugar-museum)

Step into the story of sugar in Australia at Fairymead House Sugar History Museum, nestled in the beautiful Bundaberg Botanic Gardens. This grand old home shares the legacy of Bundaberg's early sugarcane pioneers and the vital role played by the South Sea Islander community. Inside, discover how sugar is made – from tall cane fields to the crystals we know today – through engaging displays and historical exhibits that spark curiosity in visitors of all ages.

Explore at your own pace or join a guided tour starting at 10:15 a.m. on Mondays, Tuesdays and Wednesdays. Fairymead House also welcomes school and coach groups with special education programs. And yes, there's even a sweet treat – free samples of Bundaberg sugar to taste along the way.

With a focus on accessibility, Fairymead House Sugar Museum ensures everyone can enjoy this rich and meaningful journey through Bundaberg's sugar story.



# Fairymead House Sugar Museum Accessibility Information

## Booking Options

The Companion Card is accepted at this venue and concession tickets are available to Seniors Concession Card and DVA Concession Card holders.

- **Online:** [www.bundaberg.qld.gov.au/Community/Things-to-see-and-do/Fairymead-House/Fairymead-House-Sugar-History-Museum](http://www.bundaberg.qld.gov.au/Community/Things-to-see-and-do/Fairymead-House/Fairymead-House-Sugar-History-Museum)
- **Telephone:** 07 4130 4400
- **Email:** [fairymeadhouse@bundaberg.qld.gov.au](mailto:fairymeadhouse@bundaberg.qld.gov.au)

Visitors are welcome to contact Fairymead House Sugar History Museum by telephone or email to discuss their accessibility requirements. All staff have been trained to respond to customer queries.

## Accessible Parking and Drop-off

There is one accessible parking space in front of Fairymead house, near the Thornhill Street entrance to the Bundaberg Botanic Gardens, and curb ramps from the road to the path leading to the house

There's also a drop off point opposite the accessible parking space.





# Fairymead House Sugar Museum

## Accessibility Information

### Entry

The path up towards the house is wide and level but it is also a little steep so some wheelchair users might need assistance.

The entry to the venue is on the upper level, at the top of the large timber staircase at the front of the house. However, a lift has been installed behind the stairs that can take visitors directly to the upstairs verandah and the entry door. The lift cannot accommodate mobility scooters.

There is a call button at the base of the lift that visitors can use to contact museum staff upstairs. They will come down and unlock the lift with a swipe card or provide visitors with a code that they can use to unlock the lift. The lift door has a clear opening width of 900mm and internal dimensions of 1000 x 1400mm and the maximum load is 500kg.

The entry door is wide and there is a 15mm high threshold at the entrance.



1. Image ID: Front entrance featuring timber staircase.

2. Image ID: Visitor in wheelchair inside lift with door help open by staff member.





# Fairymead House Sugar Museum Accessibility Information

## Guided and Self-guided Tours

There are both guided and self-guided tours available at the museum. The tours begin at the upper level of Fairymead House and finish on the ground level.

Most of the interpretive information can be viewed from a wheelchair. The information and object in the table top display cases are 800mm above floor level and the top of the glass covers are 900mm above floor level.

The information is not available in digitally accessible formats.



1. Image ID: Visitors on a guided tour of Fairymead House in the upstairs museum.  
2. Image ID: Visitors in the ground floor of the museum





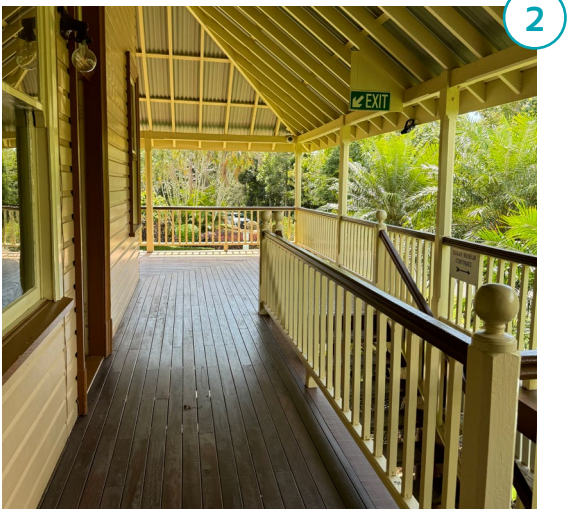
# Fairymead House Sugar Museum Accessibility Information

## Circulation

There is step-free access throughout the internal spaces on the upper floor. The thresholds between the internal space and the wrap-around verandah are approximately 20mm high. The internal doors have a minimum clear opening width of 820mm.

There is a rear stairway leading to the entrance to the ground floor museum area. There is also a step-free pathway from the lift to the entry doors to the ground floor displays. The entry door near the stairs has a clear width of 716mm and a 25mm high threshold. There is a set of double doors closer to the lift which have a 40mm high threshold.

The ground level is step-free inside and has an open plan layout with ample room for circulation.



1. Image ID: Visitors on the verandah of Fairymead House.  
2. Image ID: The rear stairs from the verandah.





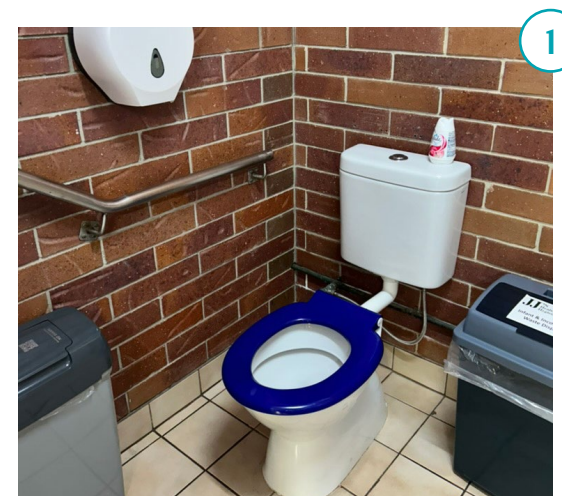
# Fairymead House Sugar Museum Accessibility Information

## Accessible Toilet Facilities

There is are Female and Male RH accessible toilet cubicles on the ground floor that has:

- A door opening width of 860mm.
- A RH toilet.
- A grab rail.
- A roll-under hand basin.
- Mixer tap with a capstan handle.
- 1400mm of clear space for transfers.
- Approximately 1400 x 1200mm circulation space.

There are no ambulant toilet cubicles in the Female or Male toilets.



1. Image ID: The Female RH accessible toilet cubicle..

2. Image ID: The Male RH accessible toilet cubicle.

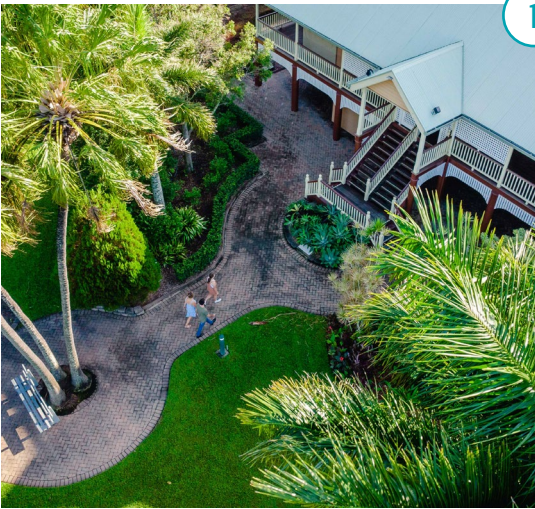




# Fairymead House Sugar Museum Accessibility Information

## Assistance Animals

Certified Assistance Animals are welcome at Fairymead House with appropriate certification provided on arrival. There are grassy areas available near the venue for assistance animal toileting. Please note that handlers are responsible for cleaning up after their animals.



1. Image ID: Birdseye view of pathway and entrance to Fairymead House Sugar Museum with grassed areas



## Listen to Vacayit Audio Guides

Scan the QR code or visit [www.vacayit.com/fairymead-house-sugar-history-museum](http://www.vacayit.com/fairymead-house-sugar-history-museum) to hear more about Fairymead House Sugar Museum.



# Hinkler Hall of Aviation Accessibility Information

**Location:** 6 Mount Perry Road, Bundaberg North

**Contact:** 07 4130 4400

**Website:**

[www.bundaberg.qld.gov.au/Community/Things-to-see-and-do/Hinkler-Hall-of-Aviation](http://www.bundaberg.qld.gov.au/Community/Things-to-see-and-do/Hinkler-Hall-of-Aviation)

Discover the exciting world of aviation history at the Hinkler Hall of Aviation, beautifully situated within the lush Bundaberg Botanic Gardens. This extraordinary venue celebrates the life and achievements of Bert Hinkler, a pioneer in solo aviation whose daring flights captured imaginations worldwide. Take a guided or self-guided tour of the centre, where interactive displays bring history to life.

The team at Hinkler Hall is dedicated to making your visit enjoyable and comfortable no matter what your access needs, with upcoming upgrades promising even greater inclusivity for all its visitors.





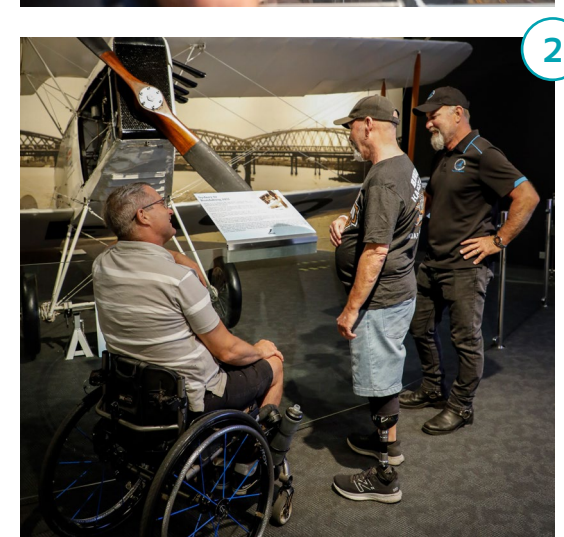
# Hinkler Hall of Aviation Accessibility Information

## Booking Options

The Companion Card is accepted at this venue and concession tickets are available to Seniors Concession Card and DVA Concession Card holders.

- **Online:** [www.bundabergregion.org/tours/hinkler-hall-of-aviation](http://www.bundabergregion.org/tours/hinkler-hall-of-aviation)
- **In-person**
- **Telephone:** 07 4130 4400
- **Email:** [hinklerhall@bundaberg.qld.gov.au](mailto:hinklerhall@bundaberg.qld.gov.au)

Visitors are welcome to contact Hinkler Hall by telephone or email to discuss their accessibility requirements. All staff have been trained to respond to customer queries.



1. Image ID: Smiling Hinkler Hall of Aviation Guide with guest inside Exhibition Hall.

2. Image ID: The Arvo Baby in the J.A. Rowland Gallery



# Hinkler Hall of Aviation Accessibility Information

## Accessible Parking and Drop-off

There is an accessible parking space in the car park on Mount Perry Road directly across the road from the front entrance to Hinkler Hall Of Aviation. There is a pedestrian crossing at Mount Perry Road and the path from the car park to the front entrance is step-free.

There is a drop-off point at the front of the building but it doesn't have a curb ramp. From this point, wheelchair users will need to travel for a short distance along Mount Perry Road to reach the path to the entrance.

Alternatively, visitors can be dropped off further along Mount Perry Road, near the rear of the building, where there is direct access to a curb ramp linking to a step-free path to the entrance.



1. Image ID: Path to Hinkler Hall of Aviation.

2. Image ID: Drop-off area at front of building with curb ramp.





# Hinkler Hall of Aviation Accessibility Information

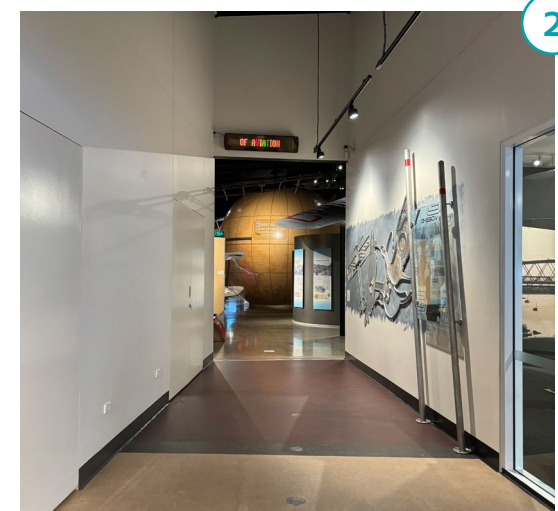
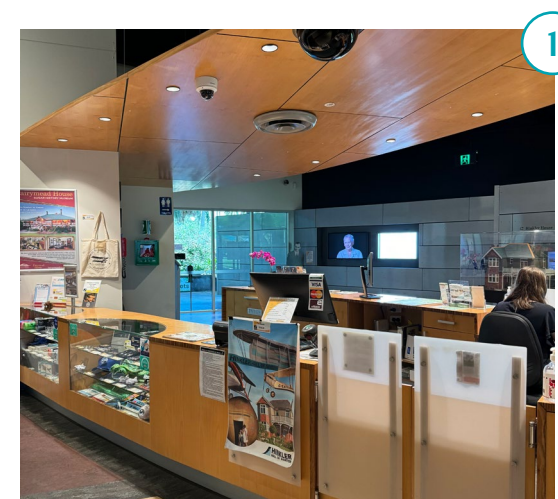
## Entry and Reception

Admission to the Hinkler Hall Of Aviation includes admission to the nearby Hinkler House. The main entrance to the Hinkler Hall Of Aviation is wheelchair accessible with wide automatic double sliding doors and there is a step-free path to the reception area.

There is one step into the Hinkler House and narrow stairs to the upper story, however a virtual tour of the House is also available in the Hall.

## Circulation

There is wide and level circulation throughout the venue. There is also a step-free path to the nearby Hinkler House and the Cafe 1928.



1. Image ID: Reception area with desk and glass cabinet displays with brochures and souvenirs.

2. Image ID: Spacious entrance to the Exhibition Hall.



# Hinkler Hall of Aviation Accessibility Information

## Self-guided Tour

Visitors can follow a self-guided tour through the Exhibition Hall and J.A. Rowland Gallery, which takes about 45 minutes to an hour. A step-by-step map of the tour is available at the reception desk. The J.A. Rowland Gallery is required to be temperature controlled to preserve the Arvo Baby aircraft inside but there are wide automatic glass doors at the entrance to the Gallery.

All of the interpretive content is viewable from a wheelchair, including the virtual tour of the Hinkler House.

There are several flight simulators at Hinkler Hall. The Fly With Bert flight simulator in the J.A. Rowland Gallery is accessible to wheelchair users. The Glide With Bert simulators replicate Bert Hinkler's first glider flight over nearby Mon Repos Beach and require visitors to lie flat on a timber ironing board, as Bert did, in order to reach the joystick.

There are three other flight simulators in the main hall which sit at ground level but require visitors to transfer into a seat. Their throttle and joystick controls are easy to use and do not require dexterity or strength to operate.





# Hinkler Hall of Aviation Accessibility Information

## Self-guided Tour (Accessibility Information Continued)

The tour includes a 15 minute film about Bert Hinkler's life at the venue's Globe Theatre. There is tiered seating in the theatre but wheelchair users can watch the film from the entry level, which is a semicircular space with a 1.5m radius. There are also two small wheelchair accessible theatrettes with bench seating which show "Bert's Inventions", a video featuring Dr Karl Kruszelnicki, and "Mon Repos To Space". The videos are not captioned.

There is a wheelchair available for visitors to use while at the venue.

## Seating

Seating is provided in the Exhibition Hall for visitors to stop and rest.

## Shop

The shop is wheelchair accessible and many of the shelves are reachable from a wheelchair. Payment options include:

- Tap and go with touch screen
- Mobile EFTPOS
- Cash



# Hinkler Hall of Aviation Accessibility Information

## Accessible Toilet Facilities

There is an all gender accessible toilet which includes:

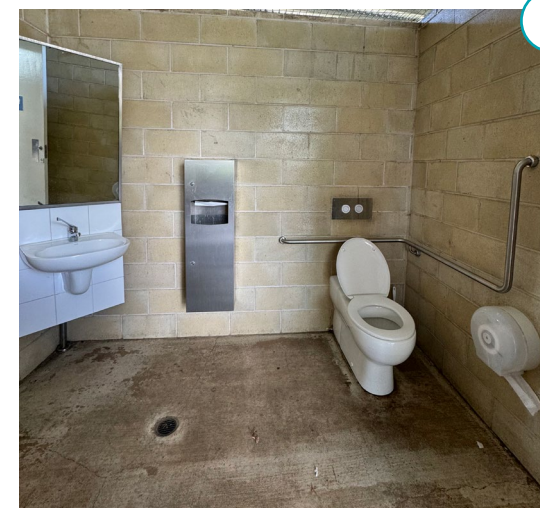
- A door opening width of 900mm.
- A LH toilet.
- Grab rails.
- A roll-under hand basin.
- Mixer tap with lever handles.

There are also ambulant toilet cubicles in both the Female and Male toilets.

## The Hinkler House

The Hinkler House is approximately 25m from the Hall, across a paved and level terrace. As well as the step at the entry, there are stairs to the upper storey. The stairs are somewhat steeper than modern day staircases and the stair treads are slightly narrower.

There are some audio recordings of interpretive information that are triggered to play by motion sensors in the house. The recordings are not loud.



*1. Image ID: All gender LH accessible toilet cubical.*





# Hinkler Hall of Aviation Accessibility Information

## Assistance Animals

Certified Assistance Animals are welcome at Hinkler Hall of Aviation and Hinkler House with appropriate certification provided on arrival. There are grassy areas available near both venues for assistance animal toileting. Please note that handlers are responsible for cleaning up after their animals.

## Assistance at Hinkler Hall of Aviation

There are multiple staff members on duty at any time and they are available to assist visitors who have accessibility requirements.

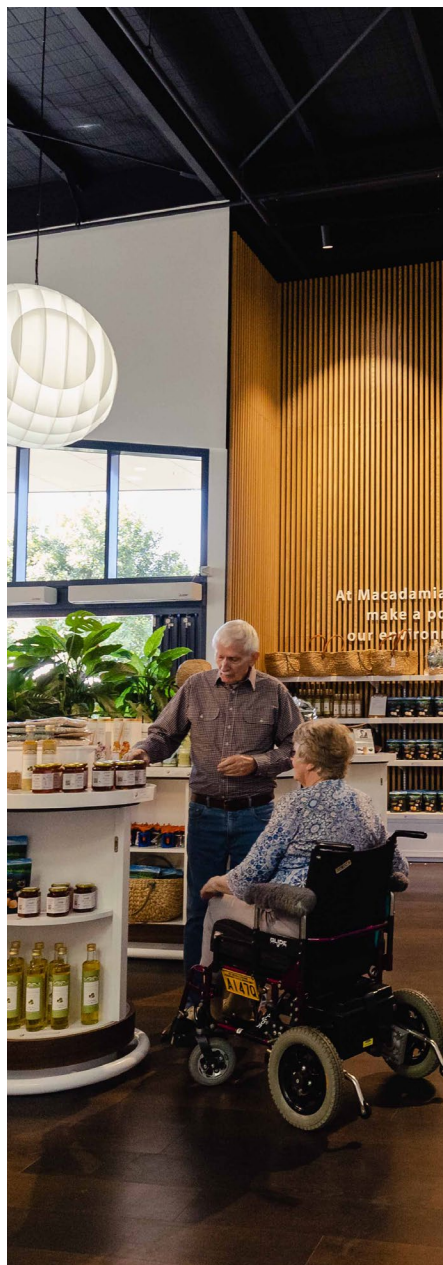
## Sensory Aspects of Hinkler Hall of Aviation

The main sources of noise at the venue are background music and the film presentations and these are moderately loud. The volume of the film can be changed but the volume of the music is fixed.



## Listen to Vacayit Audio Guides

Scan the QR code or visit [www.vacayit.com/hinkler-hall-of-aviation](http://www.vacayit.com/hinkler-hall-of-aviation) to hear more about Hinkler Hall of Aviation.



# Macadamias Australia Accessibility Information

**Location:** 4625 Goodwood Road, Bundaberg

**Contact:** 07 4159 7265

**Website:** [macadamiasaustralia.com](https://macadamiasaustralia.com)

Macadamias Australia invites you to discover the journey of the humble macadamia from tree to table through a hands-on, inclusive visitor experience. Explore the orchard and visitor centre on a guided or self-guided tour, interact with displays showcasing sustainable farming, sample unique macadamia flavours, and try cracking a nut for yourself.

At The Orchard Table café, enjoy macadamia-inspired dishes made with fresh, local ingredients, all served with views of the lush orchard.

Purpose-built to be accessible and welcoming for all, the venue is designed with comfort and inclusion in mind—ensuring every guest enjoys a memorable and meaningful visit.

## The Orchard Tour & Cafe Booking Options

- **Online:** [macadamiasaustralia.com/pages/about](https://macadamiasaustralia.com/pages/about)
- **In-person**
- **Telephone:** 07 4159 7265
- **Email:** [marketing@macadamiasaustralia.com](mailto:marketing@macadamiasaustralia.com)



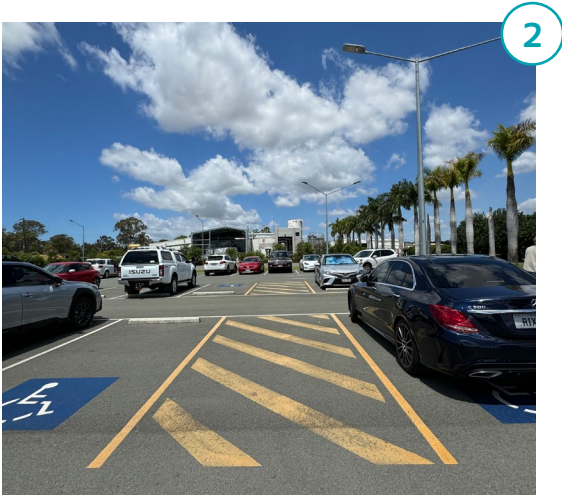


# Macadamias Australia Accessibility Information

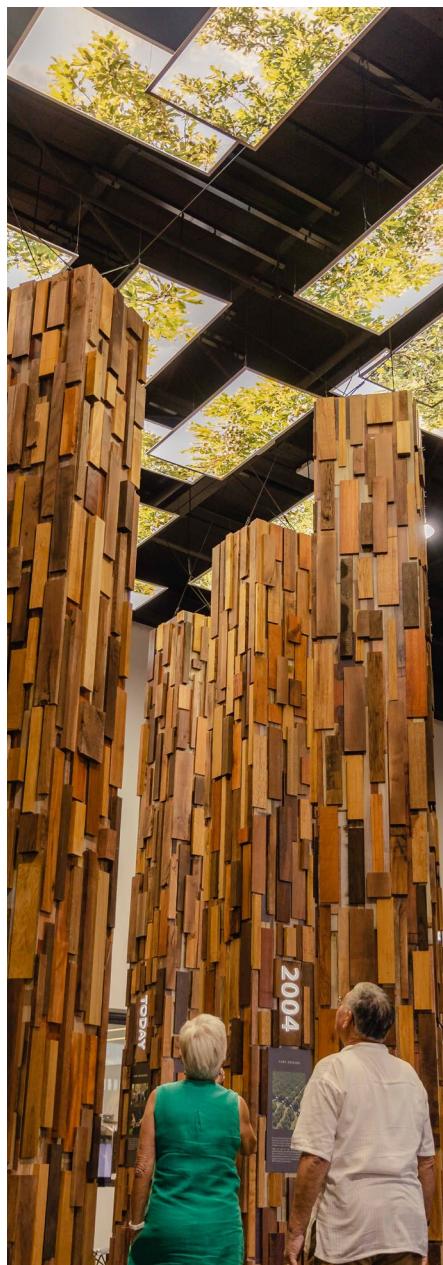
## Accessible Parking and Drop-off

There are four accessible parking spaces in the car park at the front of the Macadamias Australia’s Visitor Centre. There is also a drop-off area in the car park.

From the car park and the drop-off point there is a wide, paved and step-free pathway that leads to the Visitor Centre entrance.



1. Image ID: Mum pushing pram at the start of the pathway from the car park.  
2. Image ID: Four accessible parking spaces with a shared area



# Macadamias Australia Accessibility Information

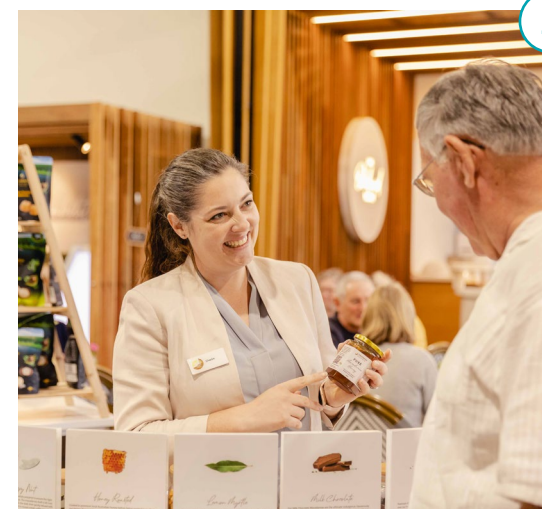
## Visitor Experience Centre

The front entrance to Macadamias Australia's is spacious and level with automatic sliding doors that have a clear opening width of 2000mm.

The Visitor Centre is an open plan space that includes reception, a tasting area, an interactive experience area, a shop and a cafe. There is level access and hard flooring throughout the Centre. The Centre has large doors that open onto a spacious outdoor area that includes a covered, paved terrace and a lawn surrounded by Macadamia Trees.

## Interactive Experience

The Interactive Experience has a range of interpretive content including, touch screens, which are reachable from a wheelchair. Staff are on hand to describe information in visual content to visitors who are blind or have low vision. Some of the video content is captioned.



1. Image ID: Two visitors within the interactive experience where towering pillars feature information screens

2. Image ID: Staff member serving visitor at the nut tasting station



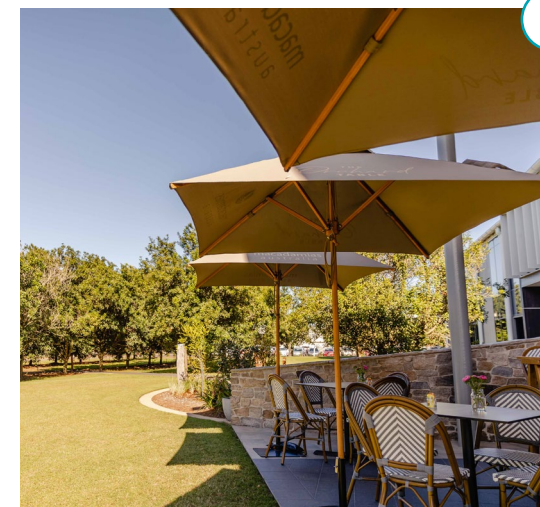
# Macadamias Australia Accessibility Information

## The Orchard Table

Taste fresh local ingredient at The Orchard Table for breakfast, lunch or afternoon tea.

The tables in the cafe are regular height and the French cafe style chairs have rounded backs. There is also bench seating with backrests. All of the furniture is moveable to accommodate wheelchairs. Visitors can be seated indoors or outdoor on the paved terrace or under the macadamia trees nearby.

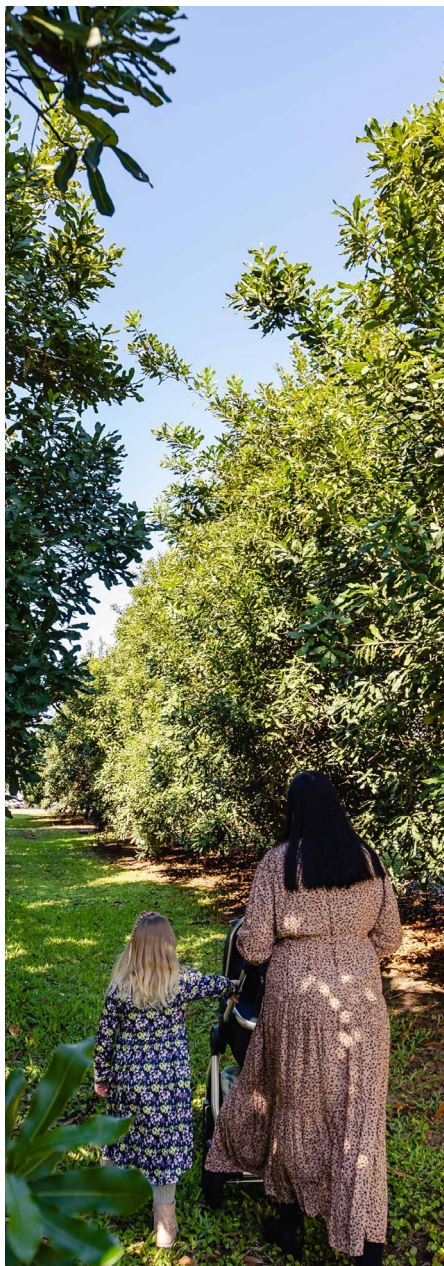
Food is ordered at the service counter and brought to your table. The service counter is 740mm high. The menu is downloadable from a QR code on the table and is also available on the Macadamias Australia website. Payments can be made by cash or touch screen Tap and Go.



1. Image ID: Family and friends dining at the orchard table.

2. Image ID: View of The Orchard Table dining that backs onto the orchard.





# Macadamias Australia Accessibility Information

## The Orchard Tour

The standard tour is approximately 1 hour and takes visitors into the main orchard area, covering a distance of 200m on foot. The tour is step-free but involves walking on grass through the orchard. The grass is mowed regularly but the ground surface can be uneven. As well as listening to the tour guide's commentary, visitors are able to feel and taste the nuts.

Macadamia's Australia can also adapt the tour experience for visitors who have accessibility requirements, including wheelchair users, by hosting the tour in the grove of macadamia trees near the front entrance, providing seating and bringing nut cracking blocks and other elements of the tour into this area. Macadamias Australia have also conducted the tour with Auslan interpreters.

Please get in touch with Macadamias Australia ahead of your visit to discuss any accessibility requirements you may have.



**1.** Image ID: Two adults on a guided orchard tour surrounded by mature macadamia trees





# Macadamias Australia Accessibility Information

## The Orchard Farm Shop

The Farm Shop has level access and all goods are reachable from a wheelchair.

Payments can be made with cash and using touch screen Tap and Go.

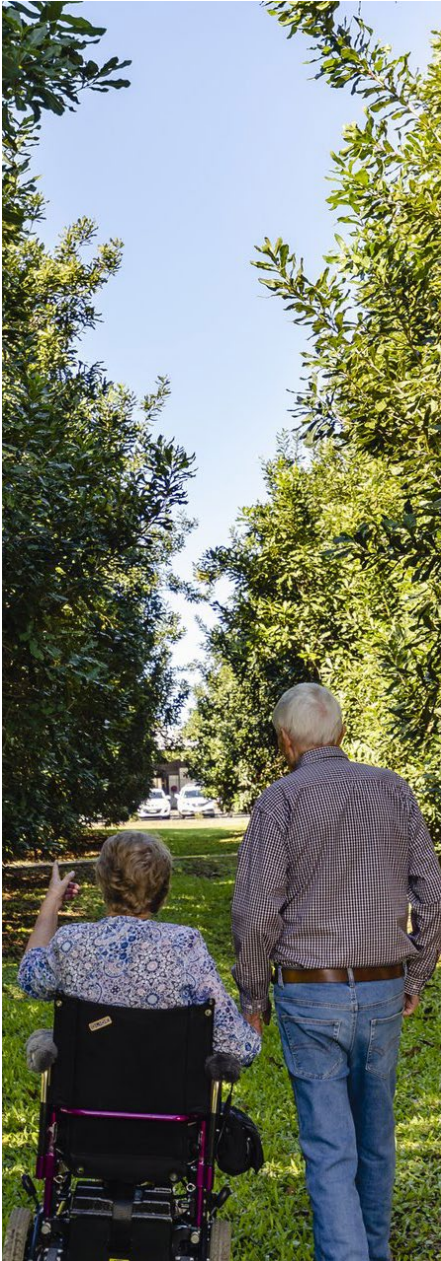
## Assistance Animals

Certified assistance animals are welcome at Macadamias Australia.

There is a large grassed area by the car park for the dog's toileting needs.



1. Image ID: Visitors at the farm shop purchasing nuts at the service counter
2. Image ID: Pathway from car park to front entrance where grassed area is.



# Macadamias Australia Accessibility Information

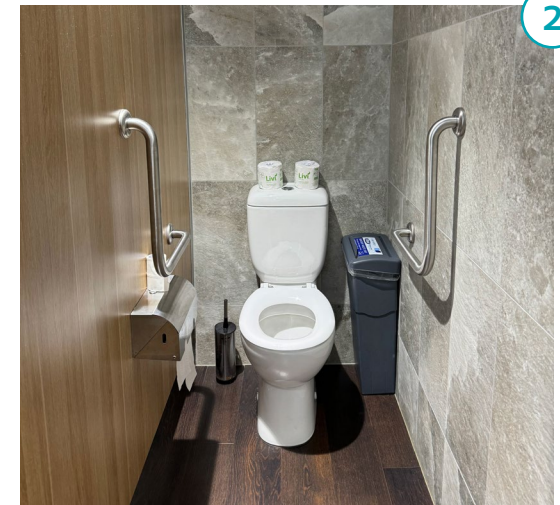
## Accessible Toilet Facilities

There is an all gender accessible toilet located within the Visitor Centre. The entry door has a clear width of 900mm . The facility includes:

- A LH toilet with a backrest
- Grab rails
- A roll-under hand basin
- A mixer tap with lever handles

There is approximately 1300mm of clear space alongside the toilet for transfers and at least 1500mm x 1500mm of clear circulations space

There is also an ambulant toilet cubicle in both the Female and Male toilets and braille signage on the toilet doors.



1. Image ID: LH accessible toilet.

2. Image ID: Ambulant toilet facilities with grab rails.





# Macadamias Australia Accessibility Information

## Sensory aspects of the venue

The area around the cafe area can be noisy at busy times. Staff will adjust music, sound or lighting in response to a visitor request. There is no designated quiet area but the outdoor areas are quiet and relaxed.

Macadamias Australia provides a range of games and play equipment for children to enjoy out on the lawn, including foam cushions in the shape of logs. There is also a low table and chairs inside the cafe where children can sit and draw or colour in.



## Listen to Vacayit Audio Guides

Scan the QR code or visit [www.vacayit.com/macadamias-australia](http://www.vacayit.com/macadamias-australia) to hear more about the tree-to-table experience at Macadamias Australia Visitor Experience.



## Mon Repos Turtle Centre Accessibility Information

**Location:** 141 Mon Repos Road, Mon Repos Conservation Park

**Contact:** 07 4159 1652

**Website:** [parks.desi.qld.gov.au/parks/mon-repos/attractions/mon-repos-turtle-centre](https://parks.desi.qld.gov.au/parks/mon-repos/attractions/mon-repos-turtle-centre)

Mon Repos Turtle Centre is a special place where people can learn about and connect with marine turtles. Located just outside Bundaberg, the centre is home to important conservation work that helps protect nesting turtles and their babies.

Mon Repos Beach is best known for being Australia's most important nesting site for endangered loggerhead turtles. Between November and March, visitors can take part in guided night tours to watch turtles come ashore to lay eggs or see tiny hatchlings make their way to the sea.

Inside the centre, there are interactive displays and hands-on exhibits that share the story of the turtles, their journey through the ocean, and the efforts to keep them safe. The experience is fun and educational for all ages.

The centre is wheelchair- and pram-accessible, and friendly staff are always available to help. Whether you're watching turtles on the beach or exploring the indoor displays, Mon Repos offers a memorable and meaningful experience for everyone.





# Mon Repos Turtle Centre Accessibility Information

## Booking Options

Entry to the Centre is free, however tickets must be purchased for the Turtle Encounter Night Tours, the Turtle Tales Immersive Experience and the Turtle Tracks and Tales Ranger-guided Walks.

Concession tickets for the Turtle Encounter Tour are available to people who hold a Commonwealth Seniors Card, a Health Care Card, a Pensioner Concession Card or a Department of Veterans Affairs Gold, White or Orange card.

## Booking a Mon Repos Turtle Encounter

- **Online:**  
[parks.desi.qld.gov.au/parks/mon-repos/attractions/mon-repos-turtle-encounter-tours](https://parks.desi.qld.gov.au/parks/mon-repos/attractions/mon-repos-turtle-encounter-tours)
- **Telephone:** 1300 722 099
- **Email:** [info@bundabergregion.org](mailto:info@bundabergregion.org)
- TTY/National Relay Service



# Mon Repos Turtle Centre Accessibility Information

## Booking Options

**Turtle Tales Immersive Experience and the Turtle Tracks and Tales Ranger-guided Walk**

- **Online:**  
[parks.desi.qld.gov.au/parks/mon-repos/attractions/mon-repos-turtle-centre](https://parks.desi.qld.gov.au/parks/mon-repos/attractions/mon-repos-turtle-centre)
- **In person:** At the Mon Repos Turtle Centre reception desk
- **Telephone:** 1300 722 099
- **Email:** [monrepos@des.qld.gov.au](mailto:monrepos@des.qld.gov.au)
- TTY/National Relay Service

## Accessible Parking and Drop-off

There are three accessible parking spaces close to the front of the Centre and there is a step-free path to the entrance.

There is a drop-off point near the accessible parking and close to the path to the front entrance.





# Mon Repos Turtle Centre Accessibility Information

## Entry & Reception

The main entrance is wheelchair accessible with wide entry doors that are left open when the Turtle Centre is open. The entrance leads directly to a large central foyer with the reception desk, shop, cafe and tables and chairs. There level access from here to the Turtle Tales Immersive Experience, the toilet facilities and the adjoining outdoor seating area and amphitheatre.

This is a drinking fountain in the foyer with both high and low spouts and a tap for filling water bottles.

There is also a large screen, approximately 2 x 4 m, at eye level with a video display of information and turtles hatching. This information is not captioned.



1. Image ID: Visitors walking on pathway towards Centre entrance

2. Image ID: Guests with QPWS Mon Repos Ranger in front of the amphitheatre.



# Mon Repos Turtle Centre Accessibility Information

## Turtle Tales Immersive Experience

There is level access throughout the Turtle Tales Immersive Experience and interactive exhibits are viewable and reachable from a wheelchair.

There are also a range of exhibits that can be explored through touch and much of the interpretive information is in large text.

The theatre is spacious and has wheelchair seating but no hearing augmentation. The screen is large and the video of the turtles' journey from the egg is magnified across the entire screen.



1. Image ID: Children engaging with a large digital turtle display inside Mon Repos Turtle Centre.

2. Image ID: A young girl and boy use measuring tape to measure a life-size turtle model.





# Mon Repos Turtle Centre Accessibility Information

## Outdoor Seating Area and Ampitheatre

The outdoor area is wide and level and includes ample bench seating and picnic tables with large, central umbrellas. Two of the tables are wheelchair accessible.

The Amphitheatre is close to the outdoor seating area and about 20 m from the visitor centre. There is level access into the amphitheatre and wide pathways with tiered seating but wheelchairs seating is on the entry level.

## Pathway to Mon Repos Beach

The pathway that leads from the Turtle Centre to Mon Repos Beach is part of the Turtle Trail that extends from Bargara to South Head Parklands. This section of the path is gently undulating, step-free and paved with bitumen. From the path there are two wide timber boardwalks, the North and South boardwalk that extend to the beach. The boardwalks are wide and level for most of their length, then ramp down steeply towards the sand.

There are also several sandy paths from the bitumen to dunes and the beach. There may be turtle hatcheries on the dunes during turtle season.



# Mon Repos Turtle Centre Accessibility Information

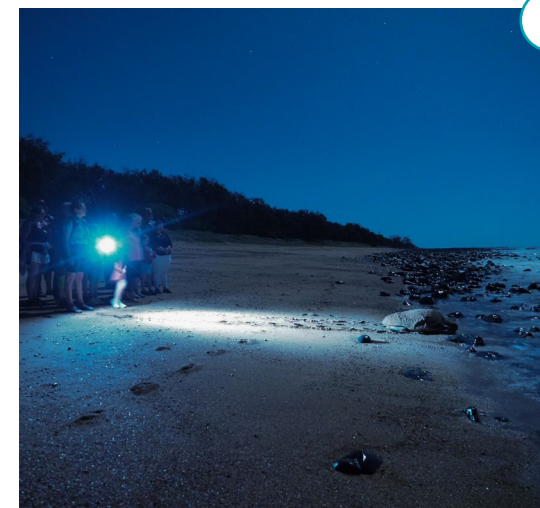
## Mon Repos Turtle Encounter

During the tour, participants walk up to 1.6km (round trip) to the beach from the Turtle Centre in the dark with only limited additional light from torches. Participants are on their feet for up to two hours and much of the time is spent on uneven sandy ground. Rangers will try to adapt the tour wherever possible to the accessibility requirements of participants.

Participants are permitted to use all-terrain wheelchairs on the tour, however they will need to provide the all-terrain wheelchair and assistance to use it.

If rangers are made aware in advance, they may be able to assist people who are blind or have low vision to touch the turtles.

Groups with Auslan interpreters can also be accommodated.



1. Image ID: Ranger-led family experience with turtle hatchlings during a Mon Repos Nightly Turtle Encounter

2. Image ID: A loggerhead mother turtle makes her way back to shore after nesting her clutch under the soft glow of a torchlight





# Mon Repos Turtle Centre Accessibility Information

## Turtle Tracks and Tales Ranger-guided Tour

The tour takes 45 minutes. It follows the sealed path for most of the way. Participants are taken out onto the sand, and sometimes dunes, at the end of the track but they also can remain on the sealed track during this stage of the tour. Participants are also welcome to use an all-terrain wheelchair to access the tour.

Participants will be on their feet for most of the tour. There is some seating along the path but, depending on the conditions of the day, the tour may stop at those points.

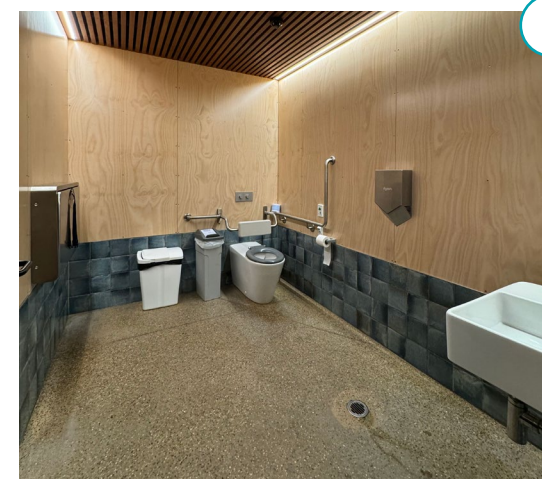
## Accessible Toilet Facilities

The accessible toilet cubicle is 2100 x 2900mm.

The toilet cubicle includes:

- A wide entry door
- A LH toilet
- A roll-under sink
- A mixer tap with lever handle

There are also ambulant toilet cubicles in both the Female and Male toilets.



1. Image ID: All gender LH accessible toilet cubicle with grab rails, disposable bins and changing table.



# Mon Repos Turtle Centre Accessibility Information

## Assistance Animals

It is recommended that visitors contact the Mon Repos Turtle Centre if they are intending to visit with an assistance animal. Although [assistance animals are generally welcome at Queensland parks](#), the Mon Repos Turtle Centre is part of a wildlife conservation area and according to the [Operational Policy - Certified Support Dogs and Assistance Animals in QPWS managed areas](#) restrictions may apply to assistance animals in this park.

## Sensory Aspects

The Centre doesn't have a dedicated quiet space but the Amphitheatre, is covered and is regularly used as a quiet space. There is currently no designated quiet hour. A sensory backpack is available at reception.

The Centre can be noisy and crowded in the evening when 230-250 people are gathering for the Turtle Encounter Tour. It is generally less busy and noisy during the day though it can become noisier when school groups come through. If circumstances allow, staff will adjust the music, sound or lighting in response to a request from a visitor.



## Listen to Vacayit Audio Guides

Scan the QR code or visit [www.vacayit.com/mon-repos-turtle-centre](http://www.vacayit.com/mon-repos-turtle-centre) to hear more about the Mon Repos Turtle Centre.





# Monsoon Aquatics Coral Farm Accessibility Information

**Location:** 145 Buss St, Burnett Heads QLD

**Contact:** 0424 368 635

**Website:** [monsoonaquatics.com.au/](https://monsoonaquatics.com.au/)

Discover the wonders of coral farming at Monsoon Aquatics, Australia's largest coral farm, located just 20 minutes from Bundaberg on the beautiful Burnett River. This innovative facility plays a key role in reef conservation through sustainable aquaculture practices.

Visitors can enjoy a guided tour of the two-hectare waterfront site, which includes indoor tanks filled with vibrant corals and a dedicated area for coral propagation. Learn how the team grows coral and giant clams using eco-friendly techniques like fragging and spawning.

Monsoon Aquatics Coral Farm aims to make the tour as inclusive as possible, while acknowledging there are a few limitations to be aware of. Please contact the facility ahead of your visit to discuss specific access requirements.



# Monsoon Aquatics Coral Farm Accessibility Information

## Booking Options

Concession tickets are available for healthcare card holders, Seniors, students and people with disability.

- **Online:** [monsoonaquaticsptyltd.rezdy.com/](https://monsoonaquaticsptyltd.rezdy.com/)
- **Telephone:** 0424 368 635
- **Email:** [tours@monsoonaquatics.com.au](mailto:tours@monsoonaquatics.com.au)
- **Text:** 0424 368 635

## Accessible Parking

There is a gravel car park in front of Monsoon Aquatics and there are currently no dedicated accessible parking spaces. There is a 20m walk from the car park to the front verandah of Monsoon Aquatics, where the tours begin. There are two steps up to the verandah. Visitors can also be dropped off near the side of the verandah, where there is a 1100mm wide ramp leading up to the verandah.

## Entry and Reception

Visitors assemble on the verandah at the start of their tour and there is step-free access into the reception from the verandah. The front verandah is under cover and there are tables and seating and coral samples for visitors to see and touch.





# Monsoon Aquatics Coral Farm Accessibility Information

## Guided Coral Farm Tour

Tours take an hour or slightly more, depending on the interests of the group, and cover approximately 100 m. Visitors move between 3 large sheds and are on their feet for the entire tour, learning about what is happening in the various tanks on site.

While the site has uneven and unpaved surfaces and limited ramp access into the sheds, the operators are keen to open this experience to anyone who is interested in coral and will adapt the tour to accommodate visitors' accessibility requirements wherever possible.

The tour guides use a microphone to amplify their voices but there is currently no hearing augmentation system in place.



1. Image ID: Tour group with guide peaking into the coral-filled water tanks.
2. Image ID: Monsoon Aquatics HQ where two large shed sit overlooking the Burnett River.





# Monsoon Aquatics Coral Farm Accessibility Information

## Guided Coral Farm Tour

### Shed 1

The door into Shed 1 has an opening width of 840mm and there is a 50mm step. There is a wide roller door with a 75mm step from the gravel at the back of the shed. The coral tanks are 1040mm high and they are arranged side-by-side, with 650mm clear width between them, along both sides of a 1300mm wide central aisle. Step stools are provided for people of short stature. Visitors can still see a lot of coral from the central aisle.

### Shed 2

Visitors move over a somewhat uneven gravel and grass surface between Shed 1 and Shed 2 and there is a narrow concrete ramp with a 90o bend leading into Shed 2. The tanks in this shed are 1100mm high and arranged side-by-side with 680mm of clear space between them. The main aisle in the shed is 750mm wide.



1. Image ID: Shed 1 with coral tanks on both sides of a central walkway with a drainage channel down the middle.

2. Image ID: Entrance into Shed 2 with door open giving a glimpse into a darker blue-lit room.





# Monsoon Aquatics Coral Farm Accessibility Information

## Guided Coral Farm Tour

### Greenhouse

The Greenhouse

Visitors reach the “Greenhouse” shed along a grass pathway and there is a short entry ramp at the front.

The tanks are 1040mm high with 700mm of clear space between them and there is a wide aisle through this shed from which visitors can also get a good view of the tanks.

## Accessible Toilet Facilities

There is an accessible toilet that can be accessed through the reception area. The toilet cubicle has:

- A door with a clear opening width of 820mm.
- A RH toilet.
- 1500mm clear space for transfers.
- Grab rails
- A vanity unit with a hand basin and a mixer tap with lever handle.
- 1500 x 2000mm clear circulation space.



1. Image ID: Accessible bathroom with RH grab rails



# Monsoon Aquatics Coral Farm Accessibility Information

## Assistance Animals

Certified assistance animals are welcome at Monsoon Aquatics Coral Farm.

## Sensory Aspects of the Venue

This is a working farm so there is a constant buzz of sound from various equipment in the sheds and there may also be water on the floor in places. There is also low level blue lighting in Shed 1 and Shed 2.

As well as the front verandah, there is a bench outside Shed 1 where visitors could take a break from the tour.



## Listen to Vacayit Audio Guides

Scan the QR code or visit [www.vacayit.com/monsoon-aquatics-coral-farm](http://www.vacayit.com/monsoon-aquatics-coral-farm) to hear more about Monsoon Aquatics.





# Mystery Craters

## Accessibility Information

**Location:** 15 Lines Road, South Kolan QLD

**Contact:** 07 4157 7291

**Website:** [mysterycraters.com.au/](https://mysterycraters.com.au/)

Step into one of Australia's quirkiest natural wonders at Mystery Craters, located between Bundaberg and Gin Gin. This fascinating site features a series of 35 colourful, water-filled craters formed in prehistoric rock—still puzzling geologists today. Visitors can explore the craters via a raised viewing deck, wander through the tranquil gardens, and enjoy a touch of nostalgia in the on-site vintage museum. Mystery Craters aims to be as inclusive as possible, and prides themselves on creating a welcoming experience for everyone.

### Booking Options

Concession tickets are available to Australian concession card holders.

- **Online:** [mysterycraters.com.au/](https://mysterycraters.com.au/)
- **In-person**
- **Telephone:** 07 4157 7291
- **Email:** [info@mysterycraters.com.au](mailto:info@mysterycraters.com.au)

Visitors can share their access requirements through the booking form and they can contact Mystery Craters using the contacts above if they have any accessibility queries.



# Mystery Craters

## Accessibility Information

### Parking

There are no designated accessible parking spaces on site but there are several bitumen parking spaces at the front of the building. There is additional parking on gravel on the other side of Lines Road. There is step-free access from the parking spaces to the venue.

Visitors can also be dropped off close to the front entrance.

### Entry and Receptions

The entry is wheelchair accessible. There is a hinged door with a clear opening width of 780mm. The reception area also includes a shop, the DNA Cafe service counter and the entry to the Earth Room and there is level access throughout.

### DNA Cafe

Visitors can order drinks, snacks and light meals from the DNA Cafe. Orders can be taken at the service counter or at the table. Staff are happy to provide a large print version of the menu if requested ahead of time. Food and drinks are collected from the counter but can also be brought directly to the tables on the verandah (see information below) on request. The tables are regular height and the chairs, which have backs but no armrests, can be moved to accommodate a wheelchair. Payment options include cash, tap and go with touch screen and mobile EFTPOS.





# Mystery Craters

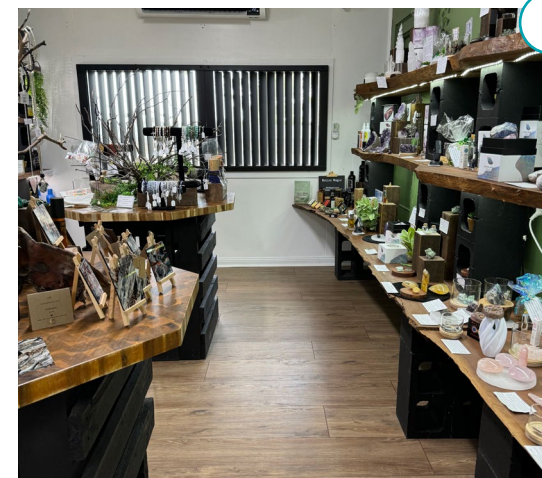
## Accessibility Information

### Shop

Many goods are viewable and reachable from a wheelchair and there are wide circulation paths between displays. The payment options include tap and go with touch screen and mobile EFTPOS.

### Earth Room

The Earth Room is a quiet and contemplative space which includes a collection of gems, fossils and other geological phenomena. Visitors are able to touch some of the collection. There is also a journaling area with armchairs. There is level access into the Earth Room and the doorway has a clear width of 780mm. The central display is 760mm high.



1. Image ID: Displays within the gift shop area.

2. Image ID: Central display within the Earth Room.





# Mystery Craters

## Accessibility Information

### Verandah

The door from the reception area to the verandah has a clear width of 800mm and there is a 25mm step at the threshold. The verandah provides views across the property and visitors can make use of the games and equipment provided on the verandah to enjoy some fun and relaxation on the surrounding lawns.

The verandah is approximately 150mm above ground level and there is a timber ramp leading from the veranda to the lawns, the pathway to the craters and a small cinema space.

### VIP Day Tours

Visitors are able to book a guided VIP daytime tour where they have a one-on-one guide. The guide may be able to provide some additional assistance to visitors with accessibility requirements. Please call Mystery Craters to discuss your requirements if you think this may be an option.



1. Image ID: Timber ramp from the verandah with native flora either side.

2. Image ID: Grouped alongside the verandah wall are a number of outdoor games and toys available to guests.





# Mystery Craters

## Accessibility Information

### Self-guided Tours

Self-guided tours take around 45 minutes. From the ramp off the verandah, there is a 20m walk along an 870mm wide concrete path to get to the crater area and a raised viewing platform.

There is a small covered outdoor cinema on a compacted gravel area close to the concrete. There are chairs with armrests for visitors to sit and watch video presentations about the craters. There is no other seating around the crater area.

The crater area is approximately the size of a football field. The pathway around the craters is a combination of grass, gravel and dirt. The area is fairly flat on the upper side of the crater area but slopes down as it curves around the far end of the crater and slopes up as the path returns towards the viewing platform.



1. Image ID: View of craters from elevated platform.
2. Image ID: Cement pathway leading to the craters.





# Mystery Craters

## Accessibility Information

### Accessible Toilet Facilities

There is an accessible toilet on site. It is located at the rear of the site. Visitors must travel over an area of lawn to get to it. The cubicle has:

- A clear door opening width of 800mm.
- A LH toilet.
- 1200mm clear space for transfers.
- Grab rails.
- A roll-under sink.
- A single tap with a capstan handle.

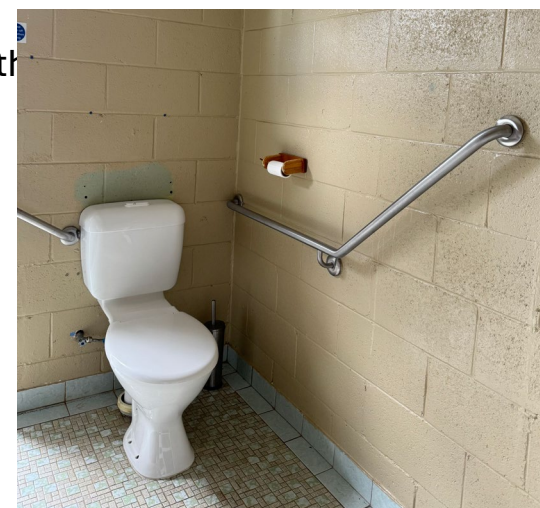


Image ID: LH accessible toilet with grab rail.

### Assistance Animals

Certified assistance animals are welcome at Mystery Craters.

### Sensory Aspects

Mystery Craters is generally a quiet and calm environment both indoors and outdoors. There is plenty of space outside for visitors to relax and unwind. There are typical sounds and smells from the natural environment.





# Taribelang Bunda Cultural Tours

## Accessibility Information

**Location:** 18/96 Mount Perry Road, Bundaberg North.

**Contact:** 0407 907 137

**Website:** [www.bundaculturaltours.com.au](http://www.bundaculturaltours.com.au)

Taribelang Bunda Cultural Tours offers an immersive and inclusive experience that invites visitors to connect deeply with the rich Aboriginal heritage of the Bundaberg region. Led by Taribelang Bunda guides, the half-day “Yesterday, Today, Tomorrow” tour provides an authentic journey through time, sharing stories passed down through generations, visiting significant cultural sites, and tasting native bush tucker.

Taribelang Bunda Cultural Tours is committed to creating an inclusive and welcoming experience for all. The team is happy to discuss your individual access needs and will do their best to accommodate you on tour. The tours are designed to be inclusive, fostering open conversations and connections through cultural awareness and friendship.

### Booking Options

The Companion Card is accepted.

- **Online:** [www.bundaculturaltours.com.au](http://www.bundaculturaltours.com.au)
- **In-person at the Taribelang Bunda office**
- **Email:** [info@bundaculturaltours.com.au](mailto:info@bundaculturaltours.com.au)



# Taribelang Bunda Cultural Tours

## Accessibility Information

### Accessibility Enquiries

Please contact [info@bundaculturaltours.com.au](mailto:info@bundaculturaltours.com.au) to discuss your accessibility requirements and we will see if we can meet them.

### Parking and Drop-off

There is no accessible parking at the Taribelang Bunda Cultural Tours office, however there is a drop-off point close by with a step-free path to the tour bus.

The nearest bus stop is Mount Perry Rd at Botanic Gardens, serviced by routes 607 and 621, and is approximately 160 metres from the tour office. Please note that buses are not frequent, with very limited service in the afternoons. Taxi and rideshare services are also options for those not self-driving.

### Accessible Toilet Facilities

There is an accessible bathroom available at the office.





# Taribelang Bunda Cultural Tours

## Accessibility Information

### Yesterday, Today, Tomorrow Tour

There is detailed information about the tour experience on the Taribelang Bunda Cultural Tours booking form.

The tour begins at the Taribelang Bunda Cultural Tours office and there is a step into the premises. The tour bus is not wheelchair accessible, however there is room to store walkers on the bus.

The tour takes visitors to a range of culturally significant sites around Bundaberg and the guide shares their cultural knowledge through verbal commentary. There are also elements of the tour that involve touch and smell and interactive activities, such as using a traditional bull roarer.

Visitors remain on the bus during the Bundaberg CBD and Mon Repos sections of the tour. Visitors get off the bus at the other stops and walk a short distance, between 10m-25m depending on the location, to reach the cultural site. The ground surfaces include bitumen, grass, gravel and dirt. There is some seating available at the Round Scrub, Bundaberg Creek and the Hummock. There are regular toilet facilities available at the Hummock.



# Taribelang Bunda Cultural Tours

## Accessibility Information

### Assistance Animals

Guide and assistance animals are welcome on Taribelang Bunda Cultural Tours. Handlers and their animals are seated at the front of the tour bus to allow easy access on and off the bus. If animals need to be harnessed while travelling, it is the handlers responsibility to provide this. Handlers are also to provide water for the animal to access at tour stops.

There are a number of stops along the tour route which would be suitable for animals to use for toileting if needed. There is also a grassy area near the car park that can be used for toileting.



### Listen to Vacayit Audio Guides

Scan the QR code or visit [www.vacayit.com/taribelang-bunda-cultural-tours](http://www.vacayit.com/taribelang-bunda-cultural-tours) to hear more about Taribelang Bunda Cultural Tours.





# Tinaberries

## Accessibility Information

**Location:** 15 Zinks Road, Woongarra

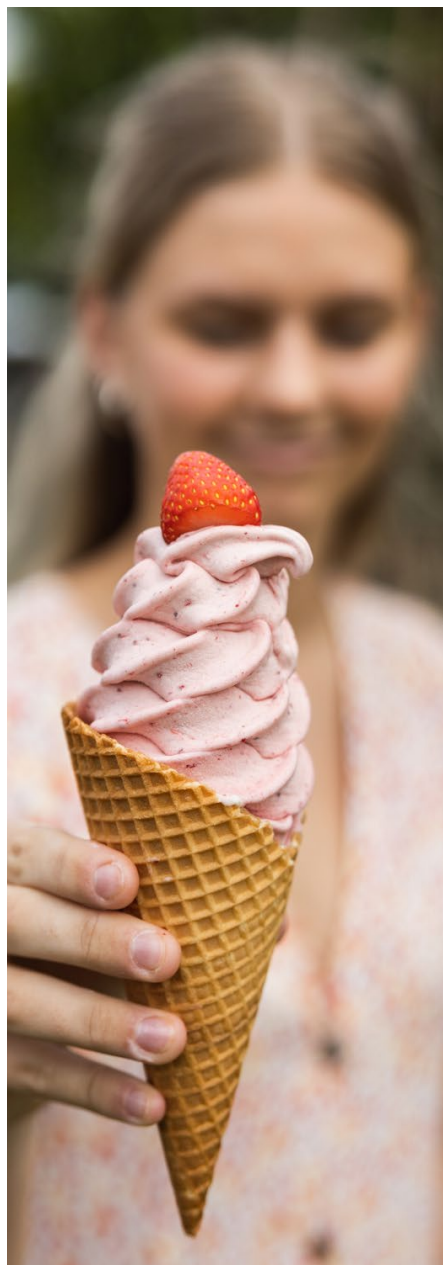
**Contact:** 0428 415 930

**Website:** [tinaberries.com.au/](https://tinaberries.com.au/)

Just 10 minutes from Bargara, Tinaberries is a colourful farm in Bundaberg's countryside. From June to October, the farm grows over 100,000 strawberry plants. The air smells sweet, and the fields are full of bright red fruit. In September, visitors can join the "pick-your-own" strawberry experience. It's a fun activity for families and people of all ages.

Tinaberries also grows macadamias, dragonfruit, and passionfruit. These fruits are used to make fresh, creamy ice cream. The ice cream is made on-site with local milk and fruit, including mangoes when they are in season. It is available 363 days a year and is a favourite treat for both locals and visitors. Whether you're picking strawberries or enjoying ice cream in the sun, Tinaberries is a great place to relax and enjoy fresh farm produce.

Tinaberries strives to make your farm experience as welcoming and accessible as possible, while maintaining the authentic charm of a working strawberry farm. Visitors with specific accessibility needs are encouraged to get in touch prior to their visit, and the team will do their best to accommodate.



# Tinaberries

## Accessibility Information

### Parking and Drop-off

Parking is available on a gravel area about 30m from the farm shop. The 3 parking spaces closest to the shop are reserved as accessible parking. Visitors can also be dropped off near these parking spaces.

There is a gently sloping gravel path from the parking to a paved area around the shop.

### Entry to the Farm Shop

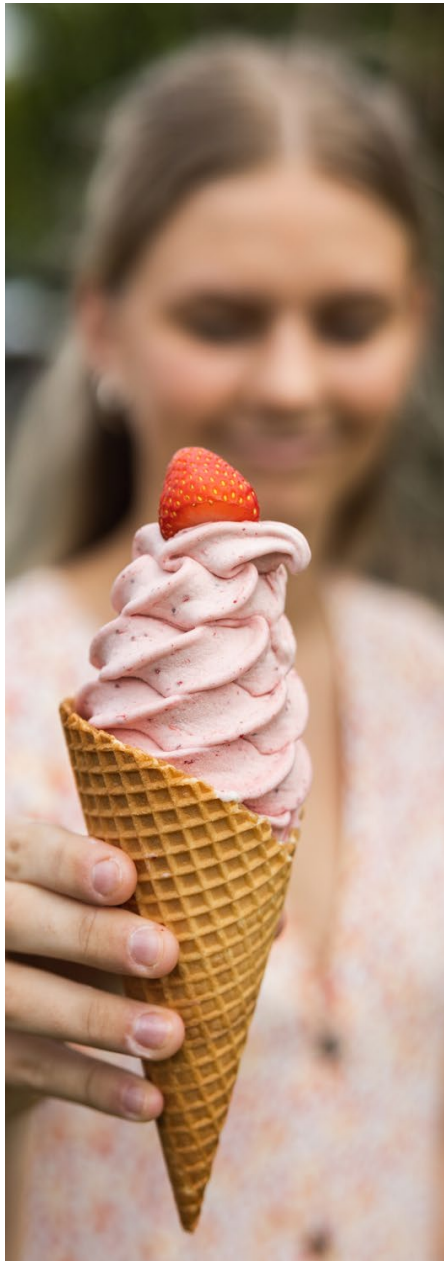
There is wheelchair access into the farm shop and the entry door has a clear opening width of 940mm. There is a level paved floor within the farm shop.

### Farm Shop

Tinaberries sells fruit ice cream all year round and fresh strawberries in season. Orders are taken at the service counter, which is 1250mm high, and brought to the table. Payments can be made using mobile EFTPOS or cash.

All of the seating is outdoors in the garden area and includes both high and regular height tables and stools and bench seating with backrests. The paths around the garden are gravel. Staff are able to assist visitors who have accessibility requirements. In summer, trees above the seating provide shade





# Tinaberries

## Accessibility Information

### "Pick Your Own" Strawberry Picking

"Pick Your Own" strawberry picking is available during the growing season from mid-August to October.

The distance from the shop to the strawberry picking beds can vary between 50m - 500m depending on where the strawberries are ready for picking.

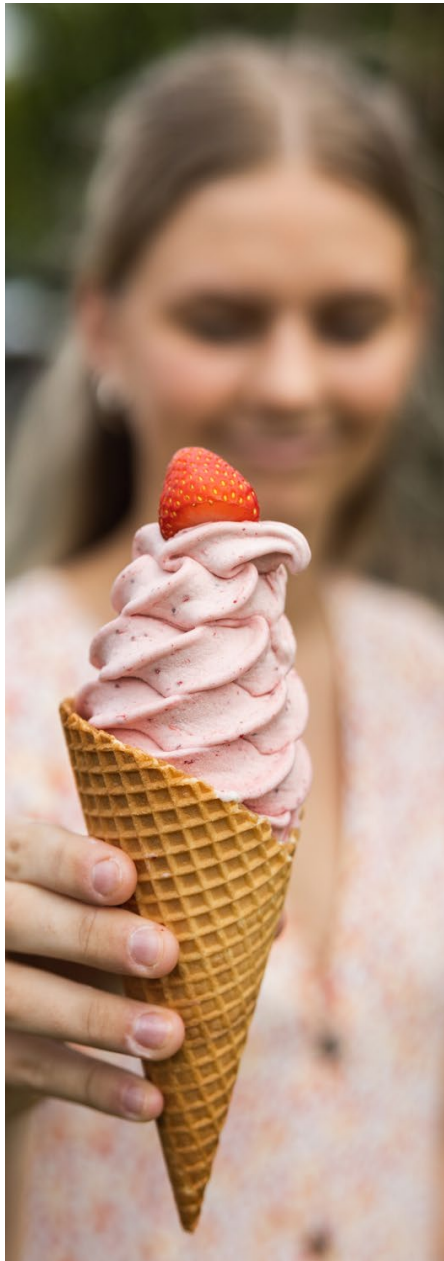
The path to the strawberry beds is gravel and the dirt paths between the beds vary between 800 - 2400mm in width.

There is also some seating in the paddocks. Tinaberries has accommodated people with a range of accessibility needs during the strawberry picking season.



1. Image ID: Strawberry beds with compact red dirt between rows and reached over grass.

2. Image ID: The path to The Shop from accessible car park .



# Tinaberries

## Accessibility Information

### Toilet Facilities

There is a regular toilet available for visitor use at Tinaberries but there are no accessible toilets on site. However, accessible public toilet facilities are available at Elliott Heads Beach, 10 minutes drive from Tinaberries.

### Assistance Animals

All certified assistance animals are welcome at Tinaberries. It is recommended that visitors call ahead of time if they will be bringing an assistance animal as Tinaberries is also a working farm and this will enable the owners to secure the farm dogs and other animals ahead of time.

### Other Dogs

All dogs other than certified assistance animals will need to stay in the "Dog Parking Area" near the car park.



1. Image ID: Regular bathroom where the toilet is located to the right of the entry.

2. Image ID: Dog Parking Area front gate.





# Tinaberries

## Accessibility Information

### Sensory Aspects of the Venue

Tinaberries is also a working farm so there are typical farm noises such as tractors, motorbikes, and machinery.

As well as the smell of strawberries there are typical farm smells like fertiliser, the sweet honey-like aroma of macadamia blossoms, and the earthy scent of freshly cut grass.



### Listen to Vacayit Audio Guides

Scan the QR code or visit [www.vacayit.com/tinaberries](https://www.vacayit.com/tinaberries) to hear more about Tinaberries.



# RESTAURANTS & CAFES







# The Waves Sports Club

## Accessibility Information

**Location:** 1 Miller Street, Bundaberg QLD

**Contact:** 07 4152 1531

**Website:** [www.thewavesbundaberg.com/](http://www.thewavesbundaberg.com/)

A hub of community spirit and entertainment, The Waves Sports Club in Bundaberg offers something for everyone. With multiple dining options, bars, live entertainment, and gaming facilities, it's a popular spot for locals and visitors alike. The club is committed to providing a welcoming, accessible environment, with step-free entry, accessible bathrooms, and friendly staff ready to assist. Whether you're catching up with friends over a meal, enjoying a show, or simply relaxing, The Waves makes it easy for all guests to feel comfortable. Visitors with specific accessibility questions are encouraged to contact the club directly for support.

### Booking Options for Rock Salk Bar & Grill

- **Online:** [www.thewavesbundaberg.com/bookings](http://www.thewavesbundaberg.com/bookings)
- **Telephone:** 07 41521 5310
- **Email:** [www.thewavesbundaberg.com/contact-us](mailto:www.thewavesbundaberg.com/contact-us)

### Accessibility Enquiries

Visitors are welcome to contact The Duty Manager at The Waves Sports Club by telephone or email to discuss their accessibility requirements.



# The Waves Sports Club Accessibility Information

## Accessible Parking and Drop-off

There are five designated accessible parking spaces close to the front entrance of the club, including one which is under cover. There is a level path of travel from the accessible parking spaces to the front entrance.

There is also a covered drop-off point at the front entrance.

## Entry and Reception

There is level access into the venue through wide automatic double sliding doors that lead directly to the reception area.

## Circulation Through The Venue

There is level access throughout the building and wide pathways between and through all of the internal spaces.



1. Image ID: Four accessible parking spaces near the front entrance.

2. Image ID: Reception area





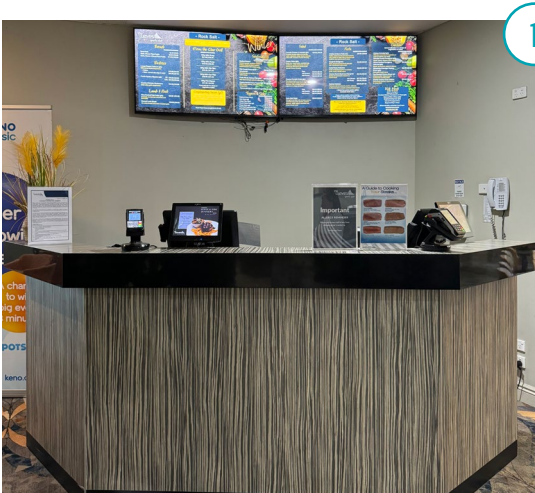
# The Waves Sports Club Accessibility Information

## Rock Salt Bar and Grill

The Rock Salt Bar & Grill is a large and spacious venue with regular height tables and chairs that can be moved to accommodate wheelchair users. The menu is available on large screens, in paper copy or can be viewed on the Waves Sports Club website.

The food is ordered from a service counter which is 1.34m high and brought to the table. Drinks can be purchased from the bar, which is 1100mm high, and can be brought to the table.

Payment can be made using cash or EFTPOS with either tap and go or tactile buttons. The EFTPOS machines can be brought to the customer.



1. Image ID: Rock Salt Bar and Grill ordering counter with menu screens behind  
2. Image ID: Path through the Rock Salt Bar and Grill.



# The Waves Sports Club Accessibility Information

## Sticky Fingers Coffee Shop

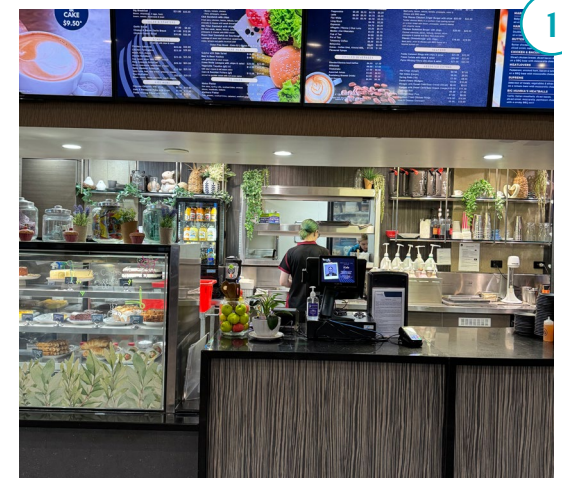
The Sticky Fingers Coffee Shop has upholstered tub chairs and coffee tables adjacent to the service counter. All of the furniture is moveable to accommodate wheelchairs.

Food and drinks are ordered from the service counters, which are 900mm and 1100mm high. Patrons can request table service when ordering.

The menu is displayed on large screens above the service counter and is also available on The Waves Sports Club's website and available in hard copy.

There is live music every Thursday, Friday, Saturday and Sunday on the stage between the coffee shop and Horizons Bar.

Payment can be made using cash or EFTPOS with either tap and go or tactile buttons. The EFTPOS machines can be brought to the customer.



1. Image ID: Sticky Fingers counter with food and menu display.





# The Waves Sports Club Accessibility Information

## Horizons Bar

The Horizons Bar has upholstered tub chairs, couches and coffee tables as well as high tables and stools.

Drinks are ordered and collected from the bar, which is between 900mm and 1100mm high. Patrons can request table service when ordering.

Payment can be made using cash or EFTPOS with either tap and go or tactile buttons. The EFTPOS machines can be brought to the customer.

## Opulence Gaming Room

The Opulence Gaming Room has upholstered tub chairs and coffee tables for visitors to enjoy, as well as high stools at the gaming machines. The stools are moveable and some of the gaming machines are playable from a wheelchair.

The bar is 1100mm high. Patrons can request table service when ordering.

There are outdoor smoking areas adjoining the gaming room. There is level access into these areas but there is no regular height seating, only high stools.



# The Waves Sports Club Accessibility Information

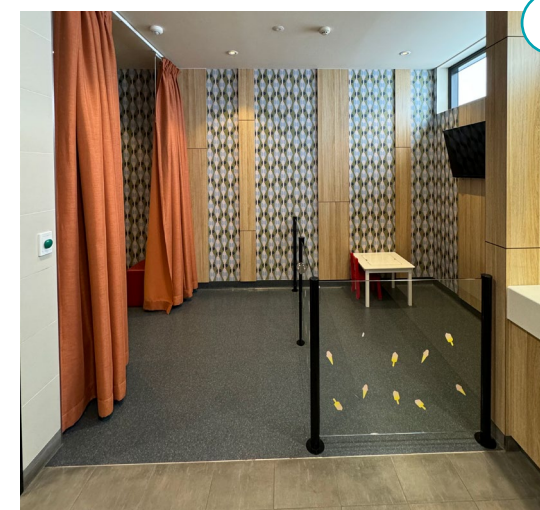
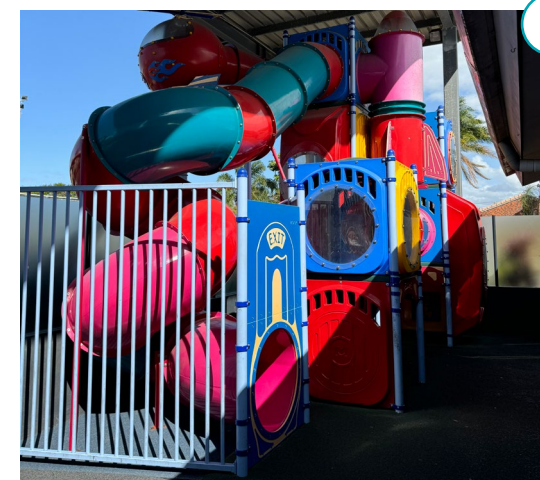
## Little Waves Children'

The Little Waves children's play area adjoins the main dining area and includes an indoor space with video game screens, two small arcade machines, movies and arts and crafts, and an outdoor area with climbing equipment.

The outdoor play equipment has a few play features that are reachable from a wheelchair. The video games screens and arcade machines have moveable seating.

## The Parents Room

The parents room includes a gated toddler play area, change tables, a low height children's toilet and a breastfeeding area. The door is operated by a push button.



1. Image ID: Little Waves children playground

2. Image ID: Gated toddler play area in the Parents Room





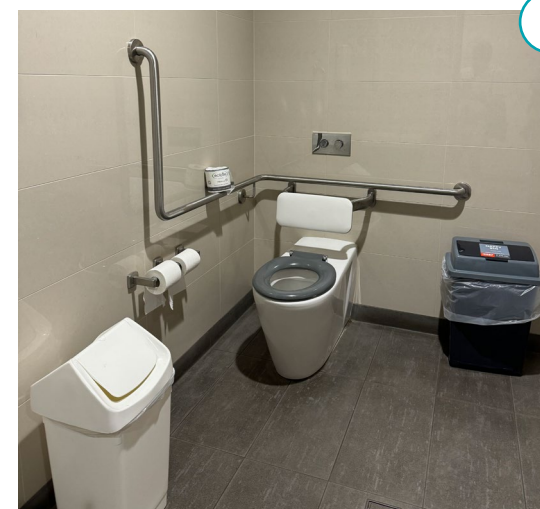
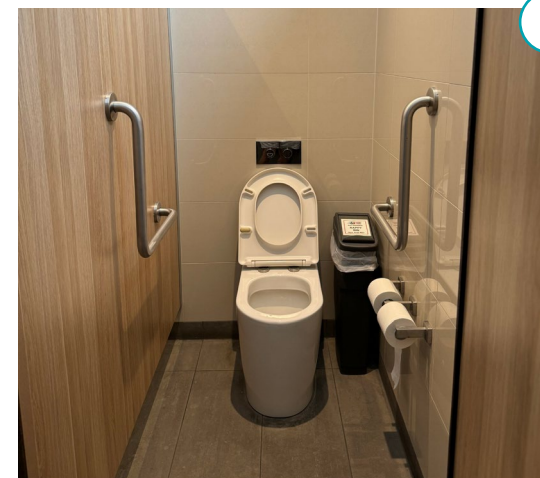
# The Waves Sports Club Accessibility Information

## Accessible Toilet Facilities

There are two accessible toilet facilities in the venue. There are ambulant toilet cubicles in all of the Female and Male toilets.

The toilet facilities at the back of the Rock Salt Bar & Grill include an accessible toilet cubicle which has:

- A clear door width of 880mm.
- A RH toilet with a backrest.
- Grab rails.
- A roll-under hand basin.
- A mixer tap with a lever handle.
- 1400mm of clear space for transfers
- 1500 x 2000mm of clear circulation space.



1. Image ID: Ambulant toilet cubicle near the Rock Salt Bar and Grill.

2. Image ID: All Gender RH accessible toilet.



# The Waves Sports Club Accessibility Information

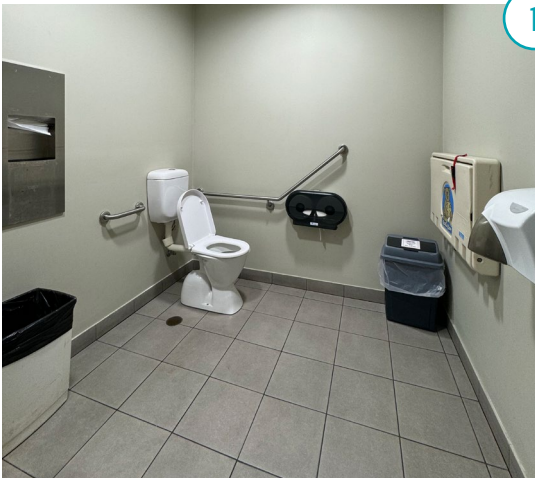
## Accessible Toilet Facilities

The toilet facilities located near the Horizons Bar include an accessible toilet cubicle that has:

- A clear door width of 880mm.
- A LH toilet with a backrest.
- Grab rails.
- A roll-under hand basin.
- A mixer tap with a lever handle.
- 1400mm of clear space for transfers
- 1500 x 2000mm of clear circulation space.

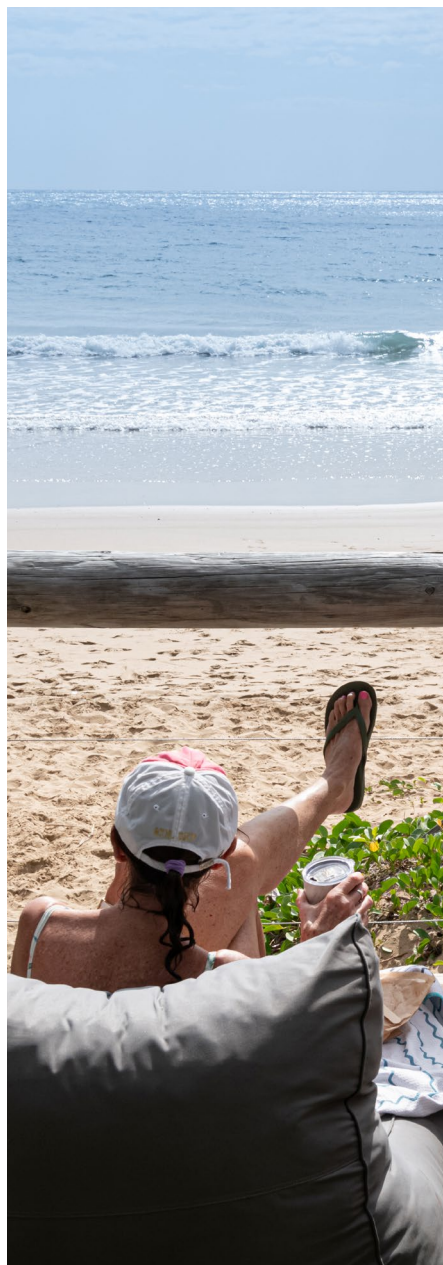
## Assistance Animals

Certified assistance animals are welcome at this venue.



1. Image ID: All gender LH toilet near the Horizons Bar





# The Beach Mill Coffee Bar Accessibility Information

**Location:** Bundaberg Surf Life Saving Club Neilson Beach

**Contact:** 07 4330 3850

**Website:** [www.windmillbargara.com/thebeachmill](http://www.windmillbargara.com/thebeachmill)

The Beach Mill is a relaxed, beachside coffee bar right on the Bargara Esplanade, just steps from one of the Coral Coast's best patrolled beaches. Whether you're starting your morning with a cappuccino, enjoying a light bite after a swim or walk, or treating yourself to a scoop of gelato, The Beach Mill offers an easygoing spot to unwind by the sea.

With gentle ocean breezes, the sound of waves, and outdoor seating with plenty of space, it's an inviting place for all. Located at the Bundaberg Surf Lifesaving Club, this dog-friendly café welcomes everyone – locals, visitors, and beach-loving pups too.

## Booking Options

- [Facebook Messenger](#)

## Accessible Parking

There are three accessible parking spaces in the vicinity of the cafe, two behind the surf life saving club and one near the skate park, and step-free access from the parking spaces to the cafe.



# The Beach Mill Coffee Bar Accessibility Information

## The Coffee Bar

The Coffee Bar is on the beach side of the surf life saving club with an unobstructed view of the beach. The service counter, which is 1200mm high, is built into the back wall of the club. Food is ordered and picked up at the service counter but table service is also available on request.

There is a wide and level paved pathway in front of the service counter and seating is on a level area of artificial turf adjoining this path. There are regular height tables and seating which is moveable and a shade sail over the area.

The menu is available in large print and can also be viewed and downloaded from the website. Payment options include cash, mobile EFTPOS with tactile indicators and touch screen Tap and Go.



1. Image ID: Customers ordering coffee at the Coffee Bar service counter.  
2. Image ID: A smiling guest in a motorised wheelchair ordering a coffee with ease at the counter.





# The Beach Mill Coffee Bar Accessibility Information

## Accessible Toilet Facilities

There are accessible toilet facilities in Neilson Park about 30m from the Beach Mill Cafe (see Neilson Beach listing for details)

## Assistance Animals

Certified assistance animals are welcome at the Beach Mill Cafe.



Listen to Vacayit Audio Guides  
Scan the QR code or visit [www.vacayit.com/beach-mill-coffee-bar](http://www.vacayit.com/beach-mill-coffee-bar)  
to hear more about The Beach Mill.



1. Image ID: Visitors walking along the path that stretches along Bargara Esplanade to The Beach Mill.  
2. Image ID: Visitors overlooking calm and clear views of Nielson Beach seated on bean bags..



# The Garden Mill Accessibility Information

**Location:** 100 Hughs Road, Bargara

**Contact:** 07 4330 3850

**Website:** [www.windmillbargara.com/thegardenmill](http://www.windmillbargara.com/thegardenmill)

Set among lush and peaceful gardens in Bargara, The Garden Mill Café is a welcoming spot for families, food lovers and anyone who enjoys the simple pleasures of good food and fresh air. With a menu full of local, seasonal produce and a setting that feels like a country escape, it's a place where you can slow down and truly relax.

Guests can enjoy shaded outdoor seating, wide open spaces and gentle garden paths, making it easy to move around at your own pace. Whether you're tucking into fresh scones with local jam, sipping coffee under the trees, or meeting friendly goats and chickens, there's something here to engage all the senses.

The Garden Mill team is warm, friendly and proud of their community roots. They go out of their way to make everyone feel at home, and are happy to help with any accessibility questions. If you have specific needs or would like more information before your visit, get in touch with them directly – they'll be more than happy to chat.





# The Garden Mill Accessibility Information

## Booking Options

- **Telephone:** 07 4330 3850
- **Email:** [gardenmillfunctions@hotmail.com](mailto:gardenmillfunctions@hotmail.com)
- **Facebook Messenger:** [www.facebook.com/GardenMillCafe/](https://www.facebook.com/GardenMillCafe/)
- TTY/National Relay Service

Visitors can contact Garden Mill Cafe via Facebook Messenger if they have accessibility queries and managers will follow up.

## Accessible Parking and Drop-off

There are gravel car parks at both the front and rear of the property. There is a step-free path from both car parks to the cafe but there are no designated accessible parking spaces on site.

Visitors can also be dropped off at the front and rear car parks.



1. Image ID: The concrete path from the



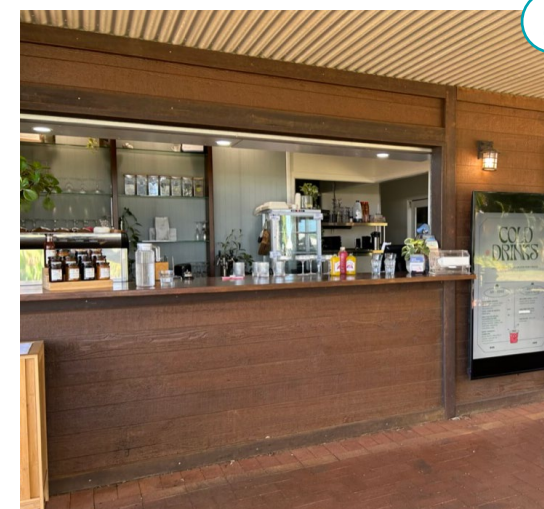
# The Garden Mill Accessibility Information

## Cafe

The cafe is an outdoor venue in a garden setting that includes gazebos, a small playground and chicken, goat and guinea pig enclosures. There are step-free paths to the gazebos and the accessible toilet facilities.

The seating area is undercover and on a level, paved surface. It has regular height tables and chairs with armrests and the furniture is moveable to accommodate wheelchair users.

The menu is in large print and can also be viewed or downloaded from the Garden Mill Cafe website. Visitors can order at the service counter, which is 1150mm high, or orders can be taken from their table. Food is brought to the table. Payment options include cash, mobile EFTPOS with tactile indicators and Tap and Go.



1. Image ID: The outdoor seating area with two tables of guests enjoying lunch.

2. Image ID: The Garden Mill service counter.





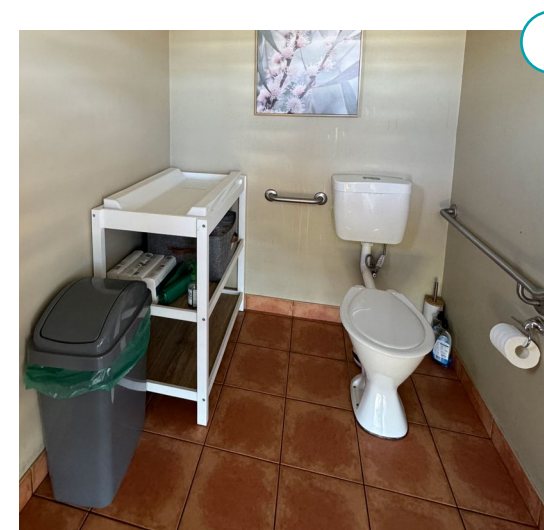
# The Garden Mill Accessibility Information

## Accessible Toilet Facilities

There are Female and Male accessible toilet facilities. There is a timber screen in front of the toilets and there is 1000mm clear width between the screen and the toilet doors. Both toilet cubicles have:

- A doorway with 800mm clear opening width.
- A LH toilet.
- A roll-under sink with a mixer tap with lever handle.
- Approximately 1400 x 1700mm of circulation space.
- A baby change table.

There is 500mm transfer space between the change table and the toilet and 970mm transfer space if the change table is moved.



1. Image ID: LH accessible toilet.



# The Garden Mill Accessibility Information

## Assistance Animals

Certified assistance animals are welcome at the Garden Mill Cafe. A dog water station is available and there are grassed areas within the grounds of the cafe and nearby for the dog's toileting needs.



## Listen to Vacayit Audio Guides

Scan the QR code or visit [www.vacayit.com/garden-mill-cafe](http://www.vacayit.com/garden-mill-cafe) to hear more about The Garden Mill.





# Lighthouse Hotel

## Accessibility Information

**Location:** 66 Zunker Street, Burnett Heads QLD

**Contact:** 07 4159 4202

**Website:** <https://thelighthousehotel.com.au/>

Located in the peaceful seaside town of Burnett Heads, just 10 minutes from Bundaberg, the Lighthouse Hotel offers a relaxed and friendly place to stay, dine, and unwind. Open daily for lunch and dinner, the hotel serves classic pub meals and chef's specials in a casual setting.

It's the closest hotel to the famous Mon Repos Turtle Centre, making it a great base for anyone planning a visit to see the turtles nesting or hatching (seasonally). Whether you're enjoying a meal, catching up with friends, or staying the night, the Lighthouse Hotel provides a comfortable, easy-going coastal experience.

If you have questions about accessibility or specific requirements, the team is happy to assist—just contact them directly before your visit.



# Lighthouse Hotel Accessibility Information

## Parking and Drop Off

There are two accessible parking spaces close to the hotel, one directly in front and a second across the road in front of the post office. Visitors can also be dropped off in the driveway at the side of the hotel. There are step-free pathways to the hotel from the accessible parking spaces and the drop-off point.

There is undercover parking in front of each motel unit.

## Lighthouse Hotel Entry

The side entrance to the hotel is wheelchair accessible and provides step-free access directly into the Sports Bar. There is an 1100mm wide path from the street to this entrance, which has an automatic sliding door. From the Sports Bar, there is step-free access to Beacon's Bistro, the Main Bar, the Beer Garden and the Gaming Room



1. Image ID: Accessible parking space at the front of the Hotel.

2. Image ID: Lighthouse Hotel front door entrance.





# Lighthouse Hotel Accessibility Information

## Main Bar

The main bar is 1100 mm high and has high tables and high stools inside. There are regular height tables with umbrellas and moveable seating out on the pavement on Zunker Street but there is a step from the pavement into the bar. Drinks are ordered from the bar.

## Beacons Bistro

There is ramped access from the sports bar into Beacon's Bistro. The ramp is quite steep, with a gradient of approximately 1:5 over 1m, so wheelchair users may need some assistance to move up or down the ramp. From Beacon's Bistro there is level access into the Main Bar.

The Bistro is spacious and there are regular height tables and chairs, which can be moved to accommodate wheelchair users. Meals are ordered from the service counter and delivered to the table. Drinks are ordered and picked up from a bar in the Bistro but table service is available if required. The menu is available in hardcopy and can also be viewed on the Lighthouse Hotel website.

Bistro meals can also be enjoyed in the Beer Garden.

Payment options include cash and EFTPOS.



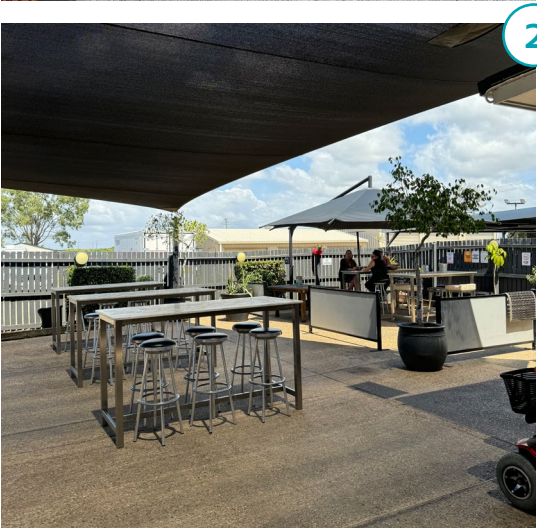
# Lighthouse Hotel Accessibility Information

## Sports Bar

The Sports Bar has large recliner chairs, some arcade machines and tables and chairs providing additional seating for the Bistro. There is level access to the Beer Garden through an automatic sliding door.

## Beer Garden

The Beer Garden is a large paved courtyard space with level access throughout. There are high tables and stools as well as regular height tables and chairs with arm rests. There are large shade sails and large umbrellas providing shade.



1. Image ID: The Main Bar with a photo of friends on the beach wrapped around the bottom half of the counter.  
2. Image ID: Outside Beer Garden with tables, seating, shade sails and large umbrellas.





# Lighthouse Hotel

## Accessibility Information

### Toilet Facilities

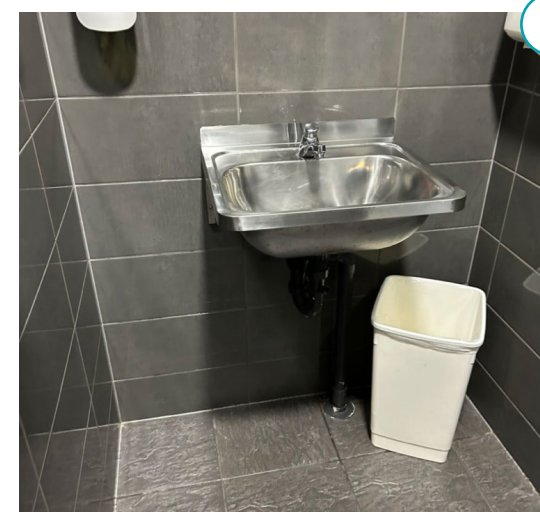
The Female and Male toilet facilities near the main bar have some additional features that will assist visitors who have reduced mobility.

#### Female Toilet

There is a 20mm step into the Female toilet cubicle and the entry door has a clear opening width of 760mm. The toilet is in an 1100mm wide space and there is a single grab rail on one side of the toilet. There is a roll-under sink with a push button tap.

#### Male Toilet

There is a 60mm step into the Male toilet cubicle and the entry door has a clear opening width of 760mm. The toilet is in an 1100mm wide space and there is a single grab rail on one side of the toilet and there are also two urinals. There is a roll-under sink with a push button tap.



1. Image ID: Mobility friendly female accessible toilet  
2. Image ID: The hand basin in the mobility friendly toilet cubicle



# PARKS, GARDENS & PLAYGROUNDS







# Bundaberg Botanic Gardens

## Accessibility Information

**Location:** Mount Perry Road, Bundaberg

**Contact:** 1300 883 699

**Website:** [www.discoverbundaberg.com.au/bundaberg-botanic-gardens-1](http://www.discoverbundaberg.com.au/bundaberg-botanic-gardens-1)

The Bundaberg Botanic Gardens offer a relaxing and beautiful experience for visitors of all ages and abilities. Located in North Bundaberg, the gardens stretch across 27 hectares of peaceful greenery, with wide pathways, shaded seating areas, and a large lake that's home to more than 100 species of birds.

Enjoy a stroll through themed spaces like the tranquil Japanese Gardens and the impressive Chinese Gardens with their traditional temple. Bring a picnic or grab a bite to eat at the on-site Café 1928, where you can also pick up duck food to feed the friendly birdlife.

The gardens are also home to several attractions, including the Hinkler Hall of Aviation, Hinkler House, the Bundaberg and District Historical Museum, and the Bundaberg Railway Museum.

With plenty of space to explore, accessible paths, and welcoming facilities, the Bundaberg Botanic Gardens are a great spot for a peaceful day out. If you have any questions about accessibility or would like help planning your visit, the team is happy to assist.



# Bundaberg Botanic Gardens

## Accessibility Information

### Accessible Parking

There are two accessible parking spaces in the car park at the Nature Playground, near the Mount Perry Road entrance, and a single accessible parking space in the car park at the Thornhill Street entrance, opposite Fairymead House.

### Circulation In The Gardens

From the Nature Playground car park, there are step-free paved pathways to Hinkler Hall of Aviation, the Hinkler House, Cafe 1928, the Bromeliad Garden, the Australian Sugar Cane Railway station, the wildlife viewing platform and some paved sections of the pathway around the lake.

From the car park at the Thornhill Street entry, there are step-free paved pathways leading to Fairymead House and the nearby picnic pavilion, the upper level of the Japanese Garden and the Chinese Garden. The Australian Sugar Cane Railway is wheelchair accessible and takes visitors through many parts of the Gardens.

The paths through the other areas of the garden are a mixture of paved and fine, loose gravel sections. The Botanic Gardens management is working to gradually pave all of the path.





# Bundaberg Botanic Gardens Accessibility Information

## Nature Playground

This is a large, shady, fenced playground with a range of equipment that is accessible to children who use wheelchairs or other mobility devices.

The accessible equipment includes a wheelchair accessible carousel, a moulded swing seat with a harness, a tandem swing, and a raised play structure with wheelchair access. This structure has a small cubby house, a boat wheelhouse and a bucket and pulley play system connected to the tanbark area below.

There are wide, paved and level pathways throughout the playground. All of the accessible equipment is reached over rubber soft-fall but some of the equipment is surrounded by sand or Tanbark.

There is a large picnic/barbecue shelter in the playground which has level access. There is also an accessible drinking fountain with a low height spout for dogs.



# Bundaberg Botanic Gardens Accessibility Information

## Cafe 1928

There is level access into the Cafe from both the road side and the Hinkler Garden side through large sliding doors. The cafe is a large open plan space with level access throughout and there is a shaded outdoor seating area overlooking the gardens. All of the seating is moveable

There is a large menu board with food options and there are also paper menus available. Customers order at the 900mm high service counter and food is brought to the table. Payments can be made using tap and go EFTPOS and cash.

There are accessible toilet facilities at the Cafe (see details on [page 154](#)).



1. Image ID: A women seated and smiling at Cafe 1928 with a group of friends
2. Image ID: A visitor enjoying a late with friends among the gardens.





# Bundaberg Botanic Gardens Accessibility Information

## Attractions Within The Gardens

### Hinkler Hall of Aviation

For more accessibility Information please [see page 78](#)

### Fairymead House Sugar History Museum

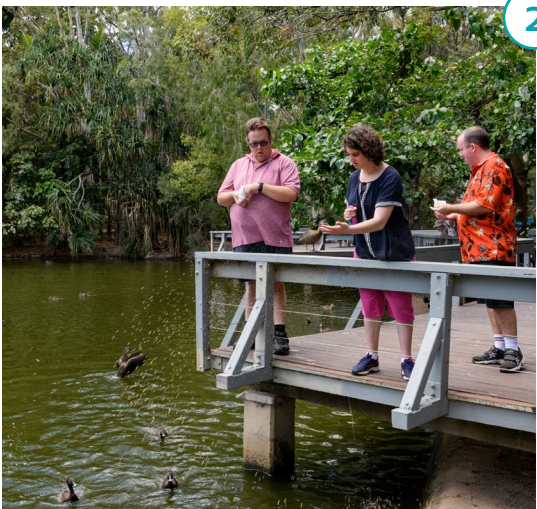
For more accessibility Information please [see page 71](#)

### The Australian Sugar Cane Railway

The [Australian Sugar Cane Railway](#), runs through the Botanic Gardens along 2 km of tracks. There is level access to the station and an access ramp that enables people who use wheelchairs or mobility scooters to board the train. The train operates on Sundays, Wednesdays and public holidays, as well as additional days during school holidays.

### The Wildlife Viewing Platform

The wildlife viewing platform is a wide bridge between the East and West sides of the main lake. There is level access to the platform, which is surfaced with decking, and there is plenty of built-in seating.



1. Image ID: A couple seated and enjoying a train ride through the gardens.  
2. Image ID: Visitors on the Wildlife Viewing Platform feeding the birds.



# Bundaberg Botanic Gardens

## Accessibility Information

### Attractions Within The Gardens

#### The Japanese Garden

The Japanese Garden is on a sloping part of the site. The step-free pathways behind Fairmead House link to a pathway into the upper section of the Japanese Garden, with views right across the garden. There are uneven stone steps where the path turns towards the lower section of the garden and the steps may be difficult for people with vision or mobility loss to safely traverse.

The path leading to the lower entry to the garden is loose gravel.

#### The Chinese Garden

The step-free path behind Fairmead House also extends down to the Chinese Garden and there is step-free access into, and throughout, the garden. There is a 1200mm wide stone ramp leading to a viewing platform overlooking the lake.

#### The Picnic Pavilion

The pavilion, on the pathway between Fairmead House and the Chinese Garden, is wheelchair accessible and has a picnic table with bench seating.





# Bundaberg Botanic Gardens

## Accessibility Information

### Accessible Bathroom Facilities

The accessible toilet facilities are located in the same building as Cafe 1928. There is a Female LH accessible toilet and a Male RH accessible toilet. The accessible toilets cubicles include:

- Approximately 1000mm of clear space for transfers
- Grab rails
- A roll-under sink
- A mixer tap with a lever handle

There are also accessible toilet facilities at the back of the Hinkler Hall of Aviation and Fairymead House which are open to the public (see the [Hinkler Hall of Aviation](#) and [Fairymead House Sugar Museum](#) listings for details).



### Listen to Vacayit Audio Guides

Scan the QR code or visit [www.vacayit.com/bundaberg-heritage-trail](http://www.vacayit.com/bundaberg-heritage-trail) to listen to stories about the Bundaberg Botanic Gardens, its rich past, and other heritage places waiting to be explored.



# South Head Parklands Accessibility Information

**Location:** Corner of Neill and Jones Street, Burnett Heads

Located on the waterfront at the gorgeous Burnett Heads, this beautiful park offers plenty of space to run and play. For the kids there is a large climbing frame and a smaller playground. For the adults, sit back and enjoy the view of the pristine blue water whilst watching the kids play in the great outdoors. There is also a skate park in the vicinity.

This is also the start of the Turtle Trail walk which will take you all the way to Bargara - perfect for a walk or bike ride.

## Accessible Parking

There is a large parking space next to the accessible toilet block that has a faded wheelchair symbol on it, indicating that it is an accessible parking space.

## Circulation

There is level access from the car park to a wide, paved and level path linking all of the features of the parklands, including the playground, and the picnic/barbecue shelter.





# South Head Parklands Accessibility Information

## Play Equipment

As well as conventional climbing equipment and slides, South Head Parklands has a range of wheelchair accessible play equipment including an accessible carousel, a birdsnest swing, a tandem swing, a roll-in train and a roll-in shop and a xylophone. All of the accessible play equipment is on rubber soft-fall.

## Turtle Trail Walking Track

The Turtle Trail Walking Track runs between Bargara and Burnett Heads and the start of the trail begins at South Head Parklands. The track is sealed for most of its length.

## Picnic/Barbeque Shelter

There is a picnic/barbecue shelter with wheelchair accessible barbecues and wheelchair accessible tables.



1. Image ID: Wheelchair accessible play equipment.

2. Image ID: The path towards the Turtle Trail.

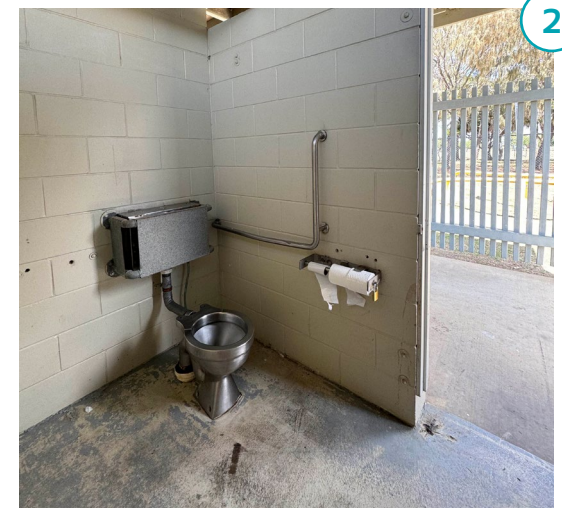


# South Head Parklands Accessibility Information

## Accessible Toilet Facilities

There is an accessible toilet at the parklands which has:

- A doorway with a clear opening width of 870mm
- A LH toilet
- A roll-under sink



1. Image ID: The path to the accessible toilet.

2. Image ID: The LH accessible toilet.





# Bargara Turtle Park & Playground Accessibility Information

**Location:** The Esplanade Bargara

**Contact:** 4153 8888

**Website:** [www.bundabergregion.org/bargara-turtle-park-and-playground#](http://www.bundabergregion.org/bargara-turtle-park-and-playground#)

Enjoy the views of Bargara Beach while the kids play on the turtle playground. The large turtle forms the different play areas - perfect for a game of hide and seek. Grab a coffee or takeaway food from one of the nearby establishments. With plenty of seating and tables, this is the perfect place for a beachside picnic.

## Accessible Parking

There are 2 accessible parking spaces on the Esplanade, one near the toilet facilities just to the North of the park and one near the beach access ramp to the South.

There is also an accessible parking space on Bauer St, not far from the park.

There are step-free paths from the parking spaces to the main pathway along the beachfront and the Turtle Park.



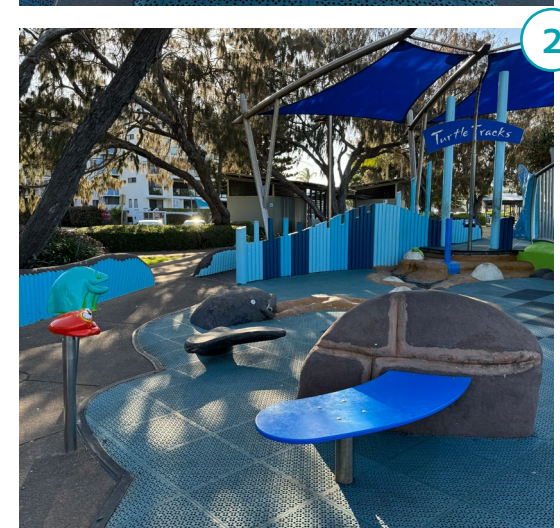
# Bargara Turtle Park & Playground Accessibility Information

## Playground

The playground is a turtle-shaped play space designed for young children. There is step-free access right around the play area and a curved timber ramp leading to the top of the turtle and views of the beach.

There is some low height equipment that is accessible from a wheelchair, including the frog and fish “telephones” that enable kids to talk to each other from across the playground. There is also a play area around a ground level water channel.

There is rubber soft-fall around the play area and shade provided by overhead shade sails and surrounding trees.



1. Image ID: View from the top of the turtle overlooking the golden sand of Bargara Beach.

2. Image ID: Low play equipment including the fish and frog telephones.





# Bargara Turtle Park & Playground Accessibility Information

## Circulation along the Beachfront

There is a wide and level walking path along the beachfront at Bargara that connects the playground to all of the beachfront facilities, including the picnic areas, the beach access ramp and the accessible toilet facilities.

There is also step-free access across the Esplanade from the beachfront to the cafes and shops around Bauer Street.

## Beach Access

There are stairs down to the beach close to the playground. There is also a wide beach access ramp with handrails about 100m from the playground.



1. Image ID: Pathed beach access ramp leading down to Bargara Beach.  
2. Image ID: Stair access to the beach near the playground.





# Bargara Turtle Park & Playground Accessibility Information

## Picnic Facilities

There are several wheelchair accessible picnic shelters with wheelchair accessible tables close to the playground.

## Accessible Toilet Facilities

There is an amenities block just South of the playground that has both RH and LH accessible toilets. Both toilet cubicles include:

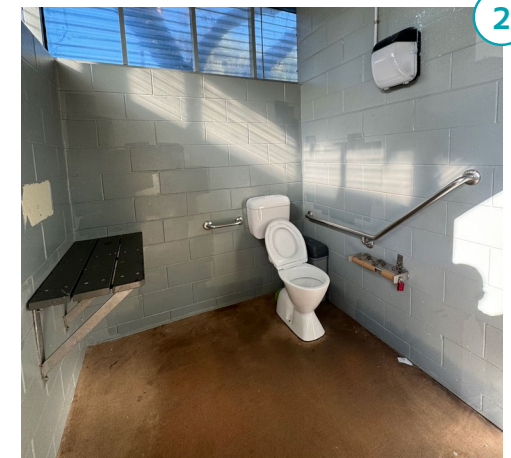
- Doorways with a clear opening width of 800mm
- Grab rails
- Approximately 1000mm clear space for transfers

There is also an outdoor shower near the playground that is wheelchair accessible.



## Listen to Vacayit Audio Guides

Scan the QR code or visit [www.vacayit.com/bargara-and-the-coral-coast](http://www.vacayit.com/bargara-and-the-coral-coast) to hear more about the Bargara area.



1. Image ID: A wheelchair accessible picnic shelter overlooking Bargara Beach.
2. Image ID: The LH accessible toilet cubicle.



# ACCOMMODATION







# Villa Mirasol Motor Inn

## Accessibility Information

**Location:** 225 Bourbong Street, Bundaberg QLD

**Contact:** 07 4154 4311

**Website:** <https://villa.net.au/>

Centrally located in the heart of Bundaberg, Villa Mirasol Motor Inn offers comfortable, convenient accommodation just a short stroll from restaurants, shops, theatres, galleries, parks, and the city's heritage walking trail. Ideal for both business and leisure travellers, the motel features spacious, air-conditioned rooms and suites across two levels, with friendly staff dedicated to personalised service and guest comfort. Free undercover parking and Wi-Fi are available to all guests, along with the option to purchase a hot cooked breakfast daily. While the motel does have two floors, guests with accessibility needs are encouraged to contact reception directly to discuss room access and suitability. Whether you're exploring the region or here for work, Villa Mirasol Motor Inn offers a welcoming and restful base in central Bundaberg.

### Accommodation Booking Options

- **Online:** <https://villa.net.au/>
- **In-person**
- **Telephone:** 07 4154 4311
- **Email:** [reception@villam.com.au](mailto:reception@villam.com.au)





# Villa Mirasol Motor Inn Accessibility Information

## Accessible Parking

There are two accessible parking spaces on site, located in front of the accessible rooms, and a step-free path of travel from the parking spaces to rooms and the main entrance. The car spaces are undercover with 2700 mm of vertical clearance.

Guests can also be dropped off at the ramp leading directly to the main entrance and Reception.

## Main Entrance and Reception

There is step-free access to the front entrance, which has a level threshold and a hinged door with a clear opening width of 820mm. There is step-free access from the entrance to Reception and from Reception to the accessible rooms.



1. Image ID: Reception counter with friendly staff member smiling as they greet a new guest.  
2. Image ID: View of the main entrance and reception with step-free access.



# Villa Mirasol Motor Inn

## Accessibility Information

### Accessible Rooms

There are two accessible Family Rooms. Room features include:

- Entry door with a clear width of 850mm
- One queen bed and two single beds
- A microwave, fridge and tea and coffee making facilities that are accessible from a wheelchair

### Bathroom Features

- 1500x1800 circulation space.
- Wide roll-in shower.
- Built-in shower chair.
- Adjustable height hand held shower head.
- Grab rails.
- Mixer taps with lever handles.
- RH transfer toilet with grab rails.
- Roll-under hand basin with mixer tap and lever handles.

Unit 18 has a LH toilet and the Queen bed is 720mm high with 150mm of clearance underneath. Unit 19 has a RH toilet and the Queen bed is 630mm high with 70mm of clearance underneath.





# Villa Mirasol Motor Inn

## Accessibility Information

### Accessible Rooms

#### Equipment

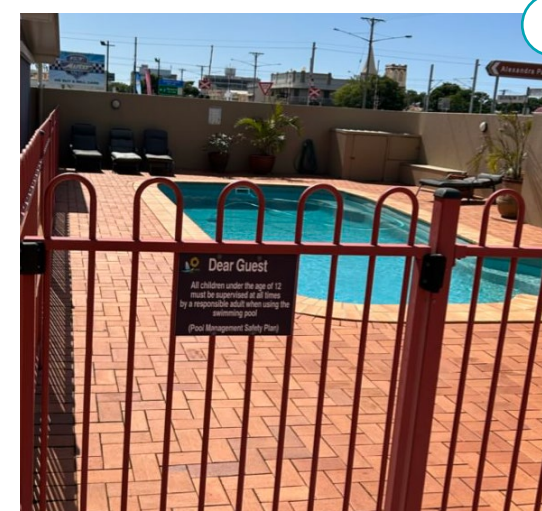
Villa Marisol has a portable shower chair available for guests and they will also facilitate equipment hire from a local supplier.

### Food Service

Breakfast can be pre-ordered for delivery to the room.

### Swimming Pool and Outdoor Area

- There is step-free access to the Pool enclosure and the area around the pool is level.
- Beside the pool, there is an outdoor area with a table and chairs under a large umbrella for guests to enjoy.
- The pool is not accessible and is 1-1.7m deep.



1. Image ID: The accessible bathroom in Unit 19.

2. Image ID: View of pool area with pool fencing wrapping the left side of the pool.



# Villa Mirasol Motor Inn

## Accessibility Information

### Laundry Facilities

Villa Marisol has a portable shower chair available for guests and they will also facilitate equipment hire from a local supplier.

### Assistance Animals

Certified assistance animals are welcome at Villa Mirasol as long as handlers provide evidence of certification.





# Lighthouse Hotel

## Accessibility Information

**Location:** 66 Zunker Street, Burnett Heads QLD

**Contact:** 07 4159 4202

**Website:** <https://thelighthousehotel.com.au/>

Located in the peaceful seaside town of Burnett Heads, just 10 minutes from Bundaberg, the Lighthouse Hotel offers a relaxed and friendly place to stay, dine, and unwind. It's the closest hotel to the famous Mon Repos Turtle Centre, making it a great base for anyone planning a visit to see the turtles nesting or hatching (seasonally). Whether you're enjoying a meal, catching up with friends, or staying the night, the Lighthouse Hotel provides a comfortable, easy-going coastal experience.

If you have questions about accessibility or specific requirements, the team is happy to assist—just contact them directly before your visit.

### Accommodation Booking Options

- **Online:** [thelighthousehotel.com.au/accommodation/](https://thelighthousehotel.com.au/accommodation/)
- **In-person**
- **Telephone:**
- **Email:** [office@lighthousehotel.net.au](mailto:office@lighthousehotel.net.au)



# Lighthouse Hotel

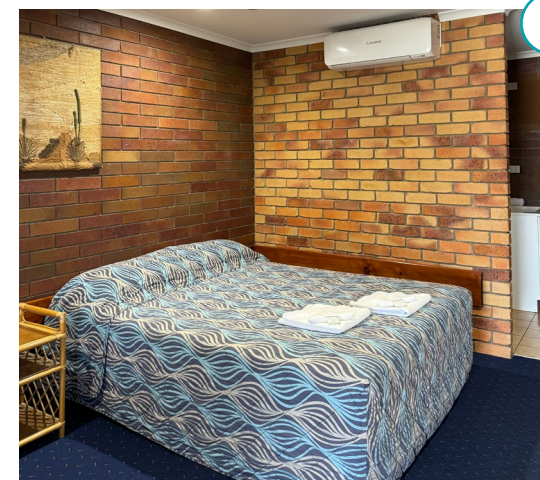
## Accessibility Information

### Motel

There are eight motel units. All motel units have entry doors, have keyed locks, knob handles and raised unit numbers.

Unit 8 has a timber entry ramp providing step-free access. The unit has a Queen size bed and a single bed, both of which can be moved, to make room for transfers. The fridge is reachable from a wheelchair and the air conditioner is operated by remote control. There is also some lower height clothes storage. Tea and coffee making facilities can be placed in a wheelchair accessible location.

The bathroom area is not wheelchair accessible. The shower is 700 x 870mm and has a 35mm high rim. The clear opening width of the glass shower screen is 490mm.



1. Image ID: Queen Bedroom with airconditioning.
2. Image ID: The bathroom doorway inside motel room.





# Turtle Sands Nature Resort

## Accessibility Information

**Location:** 159 Mon Repos Road, Mon Repos QLD

**Contact:** 1800 371 211

**Website:** <https://www.turtlesands.com.au/>

Turtle Sands Nature Resort offers a unique “see and stay” experience on the doorstep of Mon Repos, one of the world’s most important turtle conservation sites. Nestled behind the coastal dunes, this eco-conscious resort is the only place on mainland Australia where you can stay just metres from where endangered marine turtles nest and hatch.

Whether you’re visiting during turtle season or exploring the natural beauty of the Bundaberg coastline year-round, Turtle Sands provides a tranquil retreat immersed in nature. Guests can relax in comfort while enjoying close access to walking trails, beachside views, and educational experiences.

### Accommodation Booking Options

- **Online:** <https://www.turtlesands.com.au/book-now/>
- **In-person:** 8am - 6pm
- **Telephone:** 1800 371 211
- **Email:** [bookings@turtlesands.com.au](mailto:bookings@turtlesands.com.au)
- **TTY/National Relay Service:** 1800 555 660



# Turtle Sands Nature Resort Accessibility Information

## The Resort Office and Kiosk

There is a 1200mm wide ramp to the Resort Office as well as steps with TGSIs and handrails. Entry is through an automatic sliding door with a clear width of 1100 mm. There is a designated accessible parking opposite.

The reception desk has a lower-height, roll-under section and reception staff can provide park information in digitally accessible formats.

The kiosk service area is at the end of the reception counter. Most items are reachable from a wheelchair, however staff can also assist customers. Payments can be made using cash, tap and go with touch screen and mobile EFTPOS with tactile indicators.

## Pathways Through The Holiday Park

For environmental reasons, all roads, parking spaces and pathways at Turtle Sands are required to be permeable to water. This has been achieved using an extruded plastic mesh filled with compacted sand. All of the pathways are wide and step-free.

There are pathways that extend to the beachfront but wheelchair users will require a beach wheelchair to access the final sections of these paths, which are primarily grass and loose sand.





# Turtle Sands Nature Resort

## Accessibility Information

### Three Bedroom Accessible Beach Villas

There are two Three-Bedroom Accessible Villas and level access throughout both villas. There is an [Accessible Beach Villa page](#) on the Turtle Sands website with photos of the villas.

### Parking and Villa Entry

The parking space is at the base of the ramp leading to the front door which is off the front deck. The entry door is a slider with a clear width of 900 mm and is unlocked using a tap swipe card.

### Switches and controllers

All of the switches and powerpoints have large switch surfaces and are mounted 950mm above floor level. The air conditioner has a remote control.



*1. Image ID: Accessible Beach Villa parking and accessible ramp*



# Turtle Sands Nature Resort

## Accessibility Information

### Three Bedroom Accessible Beach Villas

#### Living Area and Kitchen

There is a spacious living area with ample room for circulation.

The fridge, microwave, oven, cooktop, tea & coffee facilities, food storage cupboards and crockery and pan storage are accessible from a wheelchair. The benchtops are 825mm high and there is a roll-under sink, with 720mm of clear space underneath, and a mixer tap with a lever handle. The cooktop is induction with touch controls.

#### Deck

There is level access from the villa to an adjoining timber deck, which is 2800mm wide and 7500mm long. The deck includes a regular height table and chairs. There is a wheelchair accessible barbecue and the cooktop is 870 mm high.



1. Image ID: Living area inside Accessible Beach Villa with comfortable couch and dining setting.

2. Image ID: Spacious kitchen area in Accessible Beach Villa.





# Turtle Sands Nature Resort

## Accessibility Information

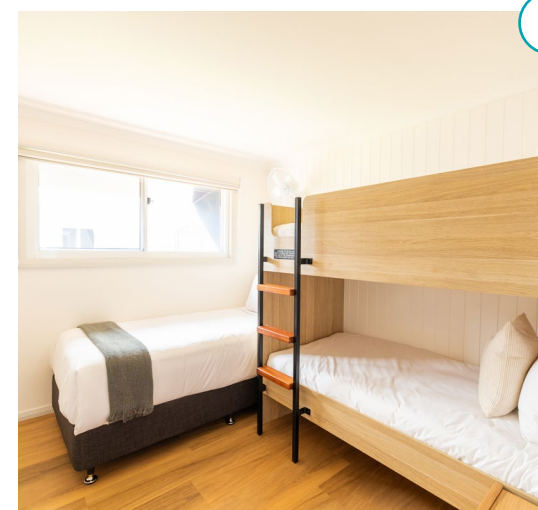
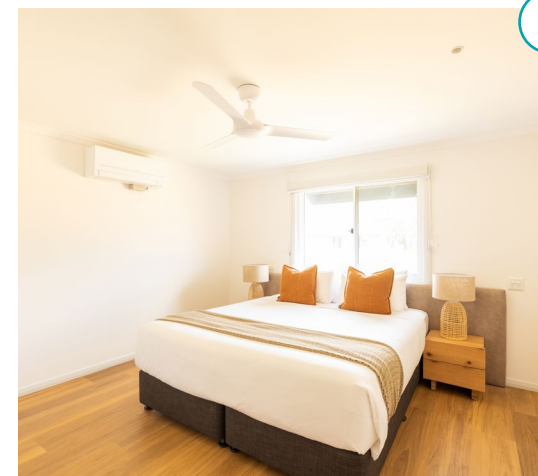
### Three Bedroom Accessible Beach Villas

#### Master Bedroom

The door to the master bedroom has a clear opening width of 860mm. The King sized bed is moveable and can be divided into two single beds. The bed is 650mm high, with 80mm of clearance underneath. There is 1100mm of clear space along both sides of the bed for transfers. The wardrobe has regular high hanging space and shelving. The lower shelves are reachable from a wheelchair. There is a wall-mounted TV facing the bed.

#### Bedroom 2

The door has a clear opening width of 860mm. There is a king single bed which is moveable, and bunk beds which are fixed. The king single bed is 650mm high with 80mm clearance underneath. The bottom bunk bed is 540mm high and has 260mm clearance underneath. The wardrobe has regular high hanging space and shelving. The lower shelves are reachable from a wheelchair.



1. Image ID: Master Bedroom with ceiling fan and airconditioning.

2. Image ID: Bedroom 2 with single bed and bunk beds.



# Turtle Sands Nature Resort

## Accessibility Information

### Three Bedroom Accessible Beach Villas

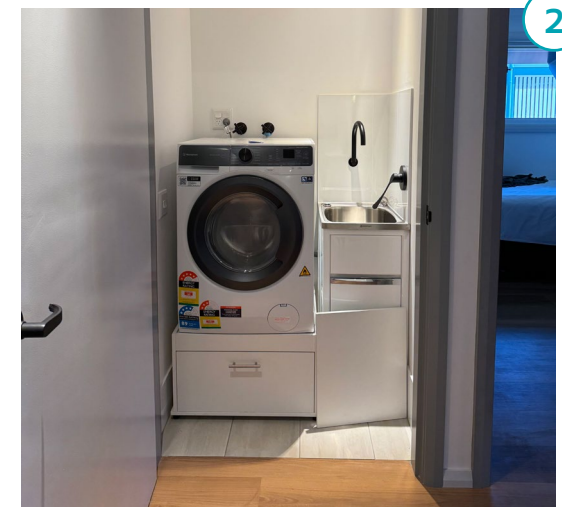
#### Bedroom 3

The door has a clear opening width of 860mm. This bedroom has a Queen sized bed which is moveable. The bed is 650mm high and there is 80mm clearance underneath. There is at least 1200mm of clear space available for transfers.

The wardrobe has regular high hanging space and shelving. The lower shelves are reachable from a wheelchair.

#### Laundry

There is a cupboard laundry with a washing machine elevated on a pedestal. The washing machine controls are 1200mm above floor level. There is also a narrow laundry trough.



1. Image ID: Spacious bedroom 3 with ceiling fan and side table

2. Image ID: The cupboard laundry with washing machine.





# Turtle Sands Nature Resort

## Accessibility Information

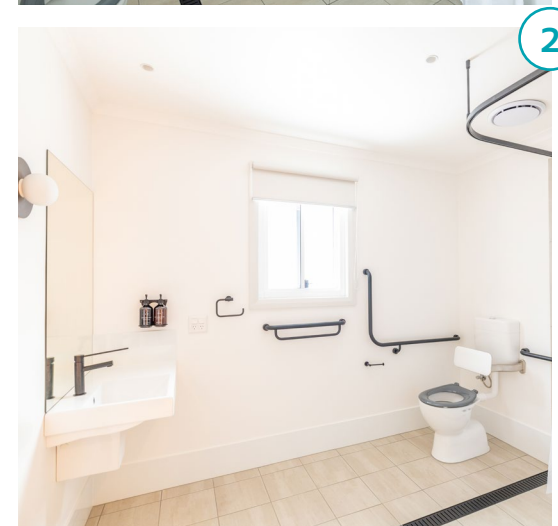
### Three Bedroom Accessble Beach Villas

#### Bathroom

The bathroom door is 890mm wide. The bathroom in both villas have:

- A 1350 x 1350mm roll-in shower with grab rails.
- An adjustable height hand held shower head and a mixer tap with lever handle.
- A Built-in shower chair.
- A RH toilet with backrest, contrasting toilet seat and grab rails.
- A roll-under hand basin with a mixer tap with a lever handle.

There is 2000 x 1600mm of clear circulation space in the bathroom.



1. Image ID: Accessible Beach Villa shower.

2. Image ID: Accessible Beach Villa bathroom with RH grab rails and roll-under basin.



# Turtle Sands Nature Resort Accessibility Information

## Accessible Studio Rooms

There are two Accessible Studio Rooms which are adjoining and share a front deck, which is 2000mm wide. The entry to both units is off the deck. There is an Accessible Studio Room page on the [Turtle Sands website](#) which has photos of the villa.

## Parking and Villa Entry

The parking spaces are at the base of the ramp leading to the deck. The entry door is a slider with a clear width of 850 mm and is unlocked using a tap swipe card.

## Switches and controllers

All of the switches and powerpoints have large switch surfaces and are positioned 1050mm above floor level. The air conditioner has a remote control.



1. Image ID: Ramp leading to the Accessible Studio Rooms





# Turtle Sands Nature Resort

## Accessibility Information

### Accessible Studio Rooms

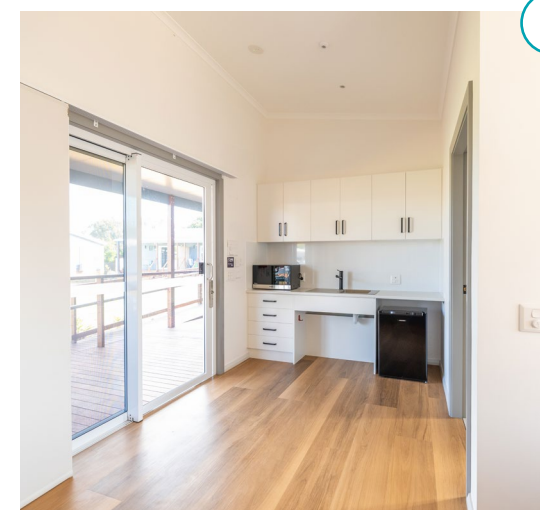
#### Living Area and Kitchen

The kitchenette has an 840mm high benchtop and a roll-under sink. The fridge, microwave, tea & coffee facilities, food storage cupboards and crockery and pan storage are accessible from a wheelchair. There is no cooktop.

There is only 500 mm clear space at the end of the bed for circulation. There is a minimum of 900mm of space between the bed and the couch, but the bed can be moved to increase the space available for transfers.

#### Queen Size Bed

The bed is 600mm high with 80mm clearance underneath.



1. Image ID: The living room area which is parallel to the Queen size bed.

2. Image ID: Kitchen space in an accessible studio room..



# Turtle Sands Nature Resort

## Accessibility Information

### Accessible Studio Rooms

#### Bathroom

The bathroom door is 890mm wide.

The bathroom has:

- A 1350 x 1350mm roll-in shower with grab rails.
- An adjustable height hand held shower head and a mixer tap with lever handle.
- A Built-in shower chair.
- A toilet with backrest, contrasting toilet seat and grab rails.
- A roll-under hand basin with a mixer tap with a lever handle.

One unit has a RH toilet and the other has a LH toilet.



1. Image ID: The accessible bathroom in the Accessible Studio Room.
2. Image ID: Roll-under basin in the Accessible Studio Room bathroom.





# Turtle Sands Nature Resort

## Accessibility Information

### Pool

The pool gate latch is 1600mm high. The area around the pool is wide and level. There is a beach entry to the shallower upper level of the pool, which includes spa jets, and there is a ramp providing wheelchair entry to the deeper end of the pool. There is also a stepped entry with a handrail. The upper level is 600mm deep and the lower level ranges from 1000-1400mm deep. There is a waterproof wheelchair available for guest use.

### Camp Kitchen and Barbeque Area

The camp kitchen is wheelchair accessible. There is a ramp with a clear width of 1100mm leading up to the entry door which has a clear width of 880mm. The kitchen benchtops are 850mm high and there is a roll-under sink. The microwave and kettle are reachable from a wheelchair. There are double sliding doors leading out to a 4200mm wide deck. There are regular height tables and movable chairs and four electric barbecues that are 900mm high.



1. Image ID: Ramp to the camp kitchen.

2. Image ID: View of Pool area with ramp leading into the pool.



# Turtle Sands Nature Resort

## Accessibility Information

### Amenities and Self-Service Laundry

The Amenities building is wheelchair accessible and includes the self-service laundry. The Female and Male toilets include an ambulant toilet cubicle. There is also an accessible bathroom with a RH toilet and a wheelchair accessible shower.

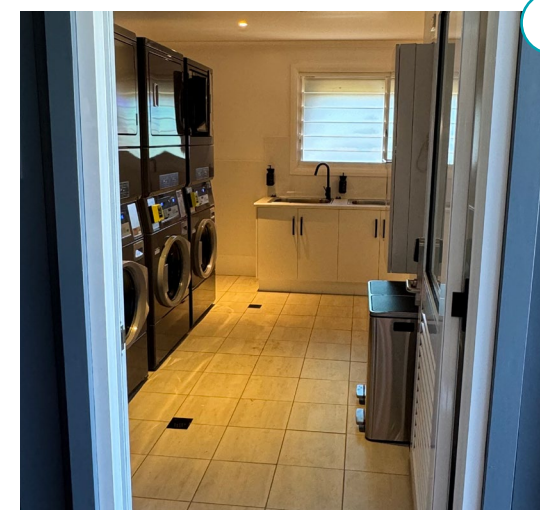
The self-service laundry includes washing machines and dryers. The washing machines are operable from a wheelchair but the dryers are not. The washing machines have touch controls and a tap and go payment system.

### Equipment

Turtle Sands have the following equipment for guest use:

- A Wheeliez Sandcruiser All Terrain Chair
- A Wheeliez All Terrain Beach Rollator
- A pool chair

The NRMA Turtle Sands staff can also arrange for the hire of mobility equipment from local suppliers.



1. Image ID: Ramp to the amenitied building.  
2. Image ID: View inside the self-service laundry.





# Turtle Sands Nature Resort

## Accessibility Information

### Assistance Animals

Certified assistance animals are welcome at Turtle Sands Holiday Park. The requests that visitors who will be bringing an assistance animal with them, notify the at the time of booking or prior to arrival. The [Assistance Animal Policy](#) provides further information.

### Beach Access

The pathway network extends towards the beach but guests need to traverse about 15 to 20m of loose sand to get from the end of the paths to the beach.



### Listen to Vacayit Audio Guides

Scan the QR code or visit [www.vacayit.com/turtle-sands-nature-resort](http://www.vacayit.com/turtle-sands-nature-resort) to hear more about Turtle Sands Nature Resort.





# BEACHES & WALKS





# Nielson Beach

## Accessibility Information

**Location:** Nielson Beach, Fred Courtice Ave, Bargarra

**Contact:** [admin@bundabergslsc.com.au](mailto:admin@bundabergslsc.com.au)

**Website:** <https://bundabergslsc.com.au/>

Located at the northern end of Bargarra, Nielson Beach is a popular coastal spot with something for everyone. Its patrolled swimming area, open spaces, and relaxed vibe make it ideal for families, beachgoers, and active visitors. Accessible amenities include toilets, showers, change facilities, shaded picnic areas, BBQs, beach matting, and seasonal beach wheelchairs. The beach connects to the Turtle Trail, a scenic coastal trail linking Bargarra to Burnett Heads. For active fun, there's a playground, skate park, skating rink, and half basketball court. The Beach Mill coffee bar is just steps from the sand. While some areas are naturally uneven, the precinct offers paved paths and accessible entry points, making Nielson Beach a welcoming and inclusive destination.

### Accessible Parking

There are two accessible parking spaces behind the Bundaberg Surf Life Saving Club and step-free access from there onto a level concrete path that leads to the Club, the beachfront and the beach Mill cafe. This path also connects to the Turtle Trail walking path. There is also wheelchair accessible parking space at the North end of the beachfront, near the skateboard park.



# Nielson Beach Accessibility Information

## Beach Matting and Beach Wheelchairs

On weekends, the Bundaberg Surf Life Saving Club puts out beach matting that extends for 40m from the base of a concrete ramp at the front of the Club onto the beach. The Club also has a Sandcruiser and a Mobi floating wheelchair available for free loan (the Sandcruiser can only be used on the sand). Visitors will need to provide a hoist if they need one.

A range of other accessible beach equipment, including a sand walker and children’s sand wheelchairs, are available for loan from other local organisations for use at Neilson Beach and other beaches in the Bundaberg region. The [U-Beach](#) Community Directory has further information on what is available. There is also access to the beach on the South side of the Surf Life Saving Club from the Turtle Trail walking path.



1. Image ID: Mobi floating wheelchair and mobile mat beach access sign positioned in front of beach access.  
2. Image ID: A visitor in a Mobi wheelchair using the accessible beach matting alongside her family and carer.





# Nielson Beach

## Accessibility Information

### The Turtle Trail Walking Path

The Turtle Trail Walking Path, also known as the [Coral Coast Pathway](#), extends for 7.7.km from Bargara to Burnett Heads, passing through Neilson Beach. At the South end of Neilson’s beach, there is a steep boardwalk section, but there is also an alternative section of pathway that is paved and has a more gentle gradient. The rest of the pathway through Neilson Beach is paved and level.

The path continues North behind the Surf Life Saving Club and past the caravan park to join the [Mon Repos Turtle Trail](#) that passes through the Mon Repos Conservation Park. According to Queensland Parks & Forests, this 2km section of the track is sealed and is “suitable for assisted wheelchair access, prams, walkers, runners and cyclists”.



1. Image ID: Timber boardwalk on the Turtle Trail at the South End of Nielson Beach.  
2. Image ID: The start of the Mon Repos Section of the Turtle Trai shaded by trees and a sign to welcome your arrival..





# Nielson Beach

## Accessibility Information

### Picnic and Barbeque Facilities

There is a covered picnic shelter behind the Surf Life Saving Club and all of the tables are wheelchair accessible. There is a level concrete pathway leading to the shelter and the floor of the shelter is concrete.

There is a nearby barbecue but it is in a separate shelter that is only reachable over grass. The cooking surface is 900 mm high.

### Playground

There is a small playground with a shade sail behind the Surf Life Saving Club. It has conventional playground equipment and a tan bark surface.



1. Image ID: The Turtle Trail walking path and the picnic shelter at Nielson Beach.  
2. Image ID: The playground near the Surf Life Saving Club with slide and shade sail.





# Nielson Beach Accessibility Information

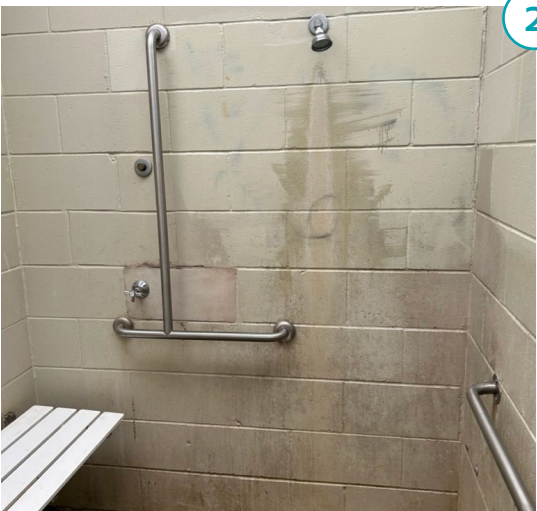
## Accessible Toilet and Shower Facility

There are Female (RH) and Male (LH) accessible toilet and shower facilities in the amenities block behind the Surf Life Saving Club and there are level concrete pathways leading to the facilities. Doors through the amenities block have a minimum clear opening width of 870mm. Both accessible toilets have:

- Grab rails
- A roll-under sink
- A mixer tap with a capstan handle

The accessible shower facilities include:

- A built-in shower seat
- A vertical grab rail
- A mixer tap with capstan handle
- A fixed shower head



1. Image ID: The entrance to the accessible toilets inside the amenities block.  
2. Image ID: The shower facility inside the amenities block.



# Nielson Beach Accessibility Information

## The Beach Mill

The Beach Mill Cafe operates from the front of the Surf Life Saving Club (for further information, go to the Restaurants & Cafes section of the guide).

## Shop

There is a shop close to the accessible parking spaces in the Bargara Beach Caravan Park that sells drinks, ice creams and other snacks.

## For Further Accessible Equipment Enquiries

As a U-Beach Partner, the following equipment is available for free during standard patrol hours:

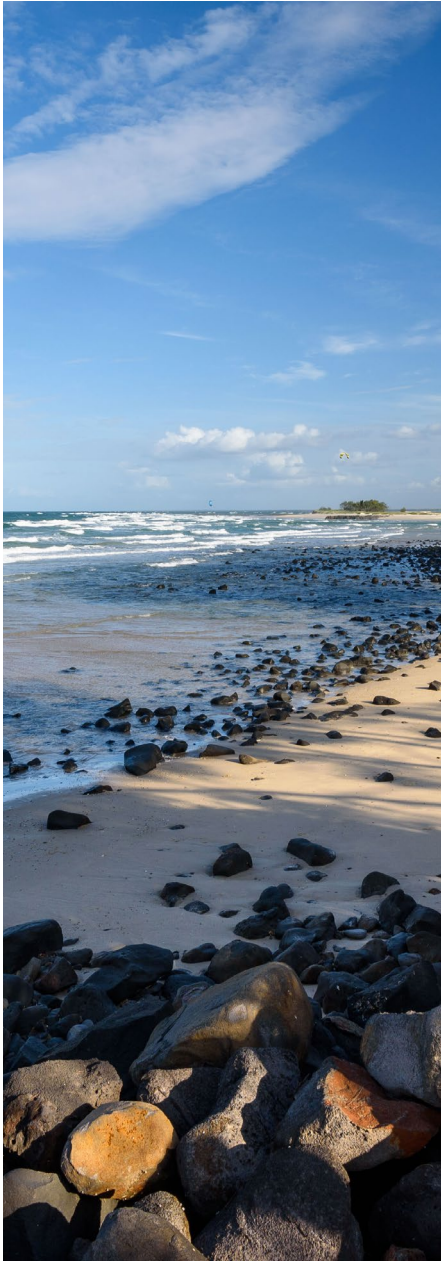
- 40m of beach matting
- A Mobi floating wheelchair
- A Sandcruiser wheelchair

To hire this equipment contact:  
[admin@bundabergslsc.com.au](mailto:admin@bundabergslsc.com.au)



1. Image ID: Visitor collecting her coffee from The Beach Mill coffee bar.





# Elliott Heads Beach

## Accessibility Information

**Location:** Park Street, Elliott Heads QLD

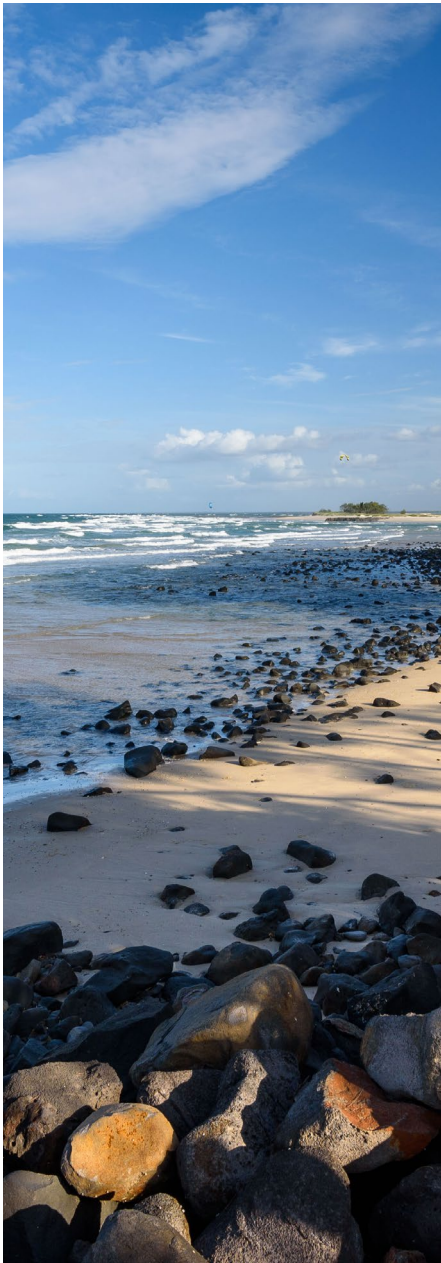
**Website:** <https://www.bundabergregion.org/elliott-heads-discover-our-region>

Elliott Heads Beach, located just 15 minutes southeast of Bundaberg, offers a stunning coastal experience where the Elliott River meets the Coral Sea. This picturesque destination features both surf and calm river waters, making it ideal for swimming, kite surfing, fishing, and exploring rock pools.

The beach is patrolled during peak periods, ensuring a safe environment for all visitors. Recent upgrades have enhanced accessibility, including the addition of beach matting and beach wheelchairs available seasonally. The adjacent Elliott Heads Holiday Park offers an accessible family cabin designed with features such as ramps, grab rails, and compliant facilities to accommodate guests with mobility needs.

### Accessible Parking

There is a single accessible parking space in the small car park near the path to Elliott Heads Beach. There are four additional accessible parking spaces in the area, two spaces close to Life Savers Park and two spaces in the larger car park near the Driftwood Cafe. There is also a drop-off point at the top of the path to the beach.



# Elliott Heads Beach Accessibility Information

## Circulation Around The Beachfront

A wide, paved and step-free pathway extends along the Elliott Heads beachfront and there are step-free paths from the accessible parking spaces to this main pathway. There is a paved and step-free path that extends from the main pathway down to a large viewing platform and the beach.

## Picnic and Barbeque Facilities

There are picnic/barbecue shelters overlooking the beach, close to the beach access path. The shelters have a concrete floor and wheelchair accessible tables.

There are also picnic shelters near Life Savers Park and near the Driftwood Cafe that can be reached by wheelchair accessible paths.



1. Image ID: The beachfront pathway.

2. Image ID: Picnic shelters overlooking the beach near the viewing platform.





# Elliott Heads Beach Accessibility Information

## Viewing Platform

The viewing platform on the path to the beach is wheelchair accessible.

## Life Savers Park

Life Savers Park, near the Elliott Heads Surf Life Saving Club, has a shaded play area. The equipment is on a tan bark base and includes a surfboard-shaped springer and swings.

There is also a playground near the Driftwood Cafe.

## Driftwood Cafe

The Driftwood Cafe is along the beachfront pathway and there is step-free access into the cafe.



1. Image ID: The viewing platform overlooking Elliott Heads Beach.  
2. Image ID: Life Savers Park with shade sail and nearby seating with the beach as the view in the background..



# Elliott Heads Beach Accessibility Information

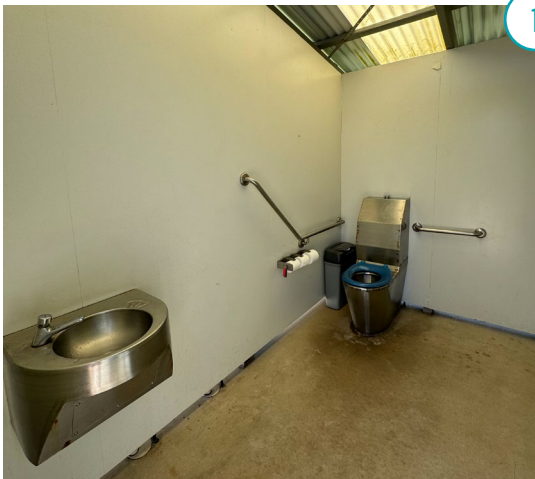
## Accessible Toilet Facilities

There are toilet facilities near the Driftwood Cafe which include an ambulant toilet cubicle and both a LH and a RH accessible toilet cubicle. The accessible toilet cubicles include:

- Grab rails
- A roll-under sink
- A tap with a push handle

The LH toilet cubicle also has a shower and a built-in shower chair.

The toilet facility near the playground has an ambulant toilet cubicle.



1. Image ID: RH accessible toilet cubicle with roll-under sink.  
2. Image ID: Playground near Driftwood Cafe.





# Woodgate Beach

## Accessibility Information

**Location:** The Esplanade, Woodgate Beach QLD

**Website:** <https://www.bundabergregion.org/visit-woodgate-beach>

Woodgate Beach is a quiet coastal town about 45 minutes south of Bundaberg, with 16 km of white sandy beach and calm, clear waters—perfect for swimming, fishing, and long beach walks. The flat beachfront and paved esplanade make it easy to access for wheelchairs, prams, and scooters. Facilities include accessible toilets, shaded picnic areas, BBQs, and a nearby caravan park.

Nestled on the edge of Burrum Coast National Park, Woodgate Beach offers access to the Banksia Boardwalk, a wheelchair-friendly trail through native bushland. It's a peaceful, inclusive place to unwind and enjoy nature.

### Accessible Parking

There is an accessible parking space at the amenities block on the Esplanade near the corner of Second Ave. There is another accessible parking space on the Esplanade opposite the NRMA Woodgate Beach Holiday Park.





# Woodgate Beach Accessibility Information

## Beachfront Path

There is a 2000mm wide, step-free paved pathway running along the beachfront, and parallel to the Esplanade. The path is level for most of the way but there are a few places where there is a transverse slope across the path, which may present a challenge for some wheelchair users.

## Beach Access

There are several points along the Esplanade where there is access to the beach. All of the access paths are sandy and some are steeper than others.



1. Image ID: Pathway along the beachfront.  
2. Image ID: Sandy pathway to the beach.





# Woodgate Beach Accessibility Information

## Picnic and Barbeque Facilities

There are picnic/barbecue shelters close to the amenities block. They are connected to the pathway network and are wheelchair accessible. They include conventional barbecues that have a 900mm high cooking surface. There is also a wheelchair accessible drinking fountain nearby.

There are also picnic and barbecue facilities at Banksia Park. The main shelter has wheelchair accessible barbecues but there is a 100mm step into the shelter from the adjoining path and the tables are not wheelchair accessible.

## Banksia Park Playground

There is a small playground with climbing equipment, swings and shade sails at Banksia Park.



1. Image ID: The accessible picnic shelter overlooking beachfront at Banksia Park.  
2. Image ID: The small playground with shade sail at Banksia Park.





# Woodgate Beach Accessibility Information

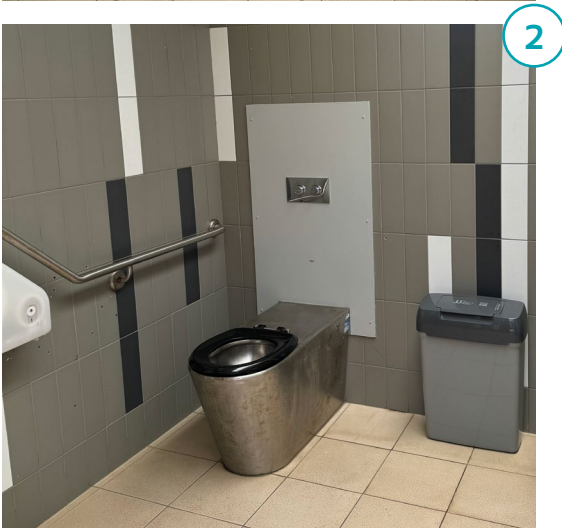
## Accessible Toilet Facilities

There is a recently built amenities block at the North end of the Esplanade, opposite Second Ave. The block includes an accessible toilet and shower cubicle with:

- A LH toilet
- Min. 1200 mm of clear space for transfers
- Grab rails
- A roll-under hand basin
- Mixer taps with lever handles
- An adjustable height shower head
- A built-in shower chair
- 500 x 1800mm of clear circulation space

There is also an all gender RH accessible toilet cubicle with:

- Min. 1200mm of clear space for transfers
- Grab rails
- A roll-under hand basin
- Mixer taps with a lever handle.



1. Image ID: The accessible toilet cubicle with shower and fold down bench.  
2. Image ID: RH accessible toilet cubicle at the amenities block.





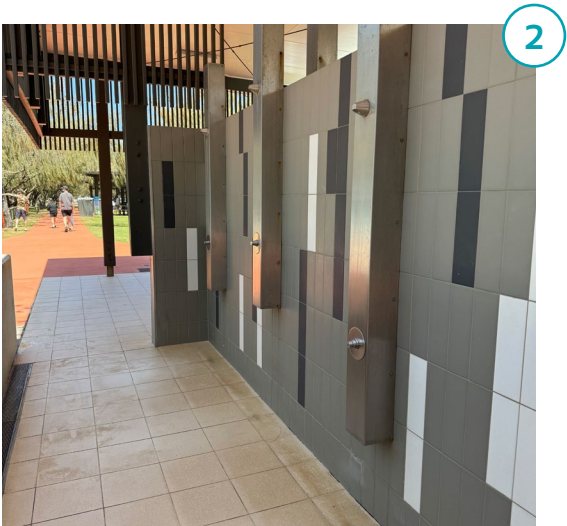
# Woodgate Beach Accessibility Information

## Accessible Toilet Facilities

There are also open showers that are wheelchair accessible. The entry to the showers has a clear opening width of 1050mm.

There is also a wheelchair accessible toilet cubicle at Banksia Park, at the South end of the Esplanade. The toilet cubicle includes:

- A doorway with a clear opening width of 830mm
- A LH toilet
- 1000mm of clear space for transfers



1. Image ID: LH accessible toilet cubicle at Banksia Park.  
2. Image ID: The open showers at the amenities block.



# Banksia Walking Track

## Accessibility Information

**Location:** Burrum National Park, Acacia Street, Woodgate Beach QLD

**Website:** <https://parks.desi.qld.gov.au/parks/burrum-coast/journeys/banksia-track>

The Banksia Walking Track in Burrum Coast National Park offers a peaceful 5.2 km return walk through coastal bushland. Starting with an 800 m wheelchair-accessible boardwalk through melaleuca wetlands, the trail continues through eucalypt forest, banksia heath, and cabbage palms.

Best enjoyed from August to October when wildflowers bloom, the trail is also great for birdwatching. Access is via Acacia Street, Woodgate Beach.

### Accessible Parking

There is a car park off Acacia Street at the trailhead of the walk. The car park is gravel and there are no marked parking spaces. Visitors will need to traverse about 8 to 10 metres of gravel to get to the trailhead, depending on where they have parked.

### Accessible Toilet Facilities

There are accessible toilet facilities nearby at the Woodgate Beach Amenities Block on the Esplanade, near Second Avenue.





# Banksia Walking Track Accessibility Information

## The Banksia Walking Track

The first 400m of the Banksia Walking Track is a 1400mm wide wheelchair accessible trail that has a very slight incline. The track is bitumen for the first 200m and there is an uneven transition from the gravel to the bitumen at the start of the trail.

The track then becomes a boardwalk that continues for another 200m, spanning an area of swamp. The gradient of the track is flat. The boardwalk has curbs along the edges but no handrails. Along the boardwalk, there is a wheelchair accessible picnic area and two nooks with bench seating and space for a wheelchair.

At the end of this section of the track, there is a bitumen pad that is large enough for wheelchair users to turn around before the track becomes steeper and narrower.



1. Image ID: The start of the timber boardwalk.

2. Image ID: The wheelchair accessible picnic area alongside bitumen path..



# DISTILLERY TOURS

WELCOME TO THE BUNDABERG RUM DISTILLERY

MUSEUM & DISTILLERY EXPERIENCE

ADULT	\$29.00
SENIOR	\$19.00
CHILD (5-17 YEARS & 3 CHILDREN)	\$14.00
CHILD (4 & UNDER)	\$9.00
PRIVATE RUM EXPERIENCE	\$250.00

NEXT AVAILABLE TOUR  
11:00AM

MUSEUM EXPERIENCE

ADULT	\$29.00
SENIOR	\$19.00
CHILD	\$14.00
CHILD (4 & UNDER)	\$9.00
PRIVATE RUM EXPERIENCE	\$250.00

# VISITOR RESOURCES

BUNDABERG  
RUM



# VISITOR RESOURCES

## The National Public Toilet Map

The National Public Toilet Map is a searchable map-based directory of public toilet facilities across Australia, and includes information about accessible and ambulant toilet facilities.

Learn more at the [National Public Toilet Map](#) website.

## Changing Places Toilets

Changing Places toilets are different to standard accessible toilets. They have extra features, more space, and are accessed using a Master Locksmith Access Key (MLAK).

The Bundaberg Regional Council will be building a changing place facility at Anzac Park in Bundaberg in the near future.

Learn more at the [Changing Places](#) website.

## U-Beach: Universal Beach Access Hub

U-Beach is a collaboration between CQUniversity Bundaberg and community organisations to improve beach access for people with disability including through the hire of beach mobility equipment.

Nielson Beach and the Bundaberg Surf Life Saving Club are proud U-Beach Partners.

**Contact Name:** Sasha Job  
**Phone:** 07 4150 7702  
**Email:** [s.job@cqu.edu.au](mailto:s.job@cqu.edu.au)

Learn more at the [U-Beach](#) website.

## Disability Resource Centre and Toy Library

The following equipment is available through membership:

- 2 x Child's sand wheelchair
- 1 x Hippocampe sand wheelchair

To arrange hire, please contact:

**Phone:** 07 4153 2909  
**Email:** [bundytoylibrary@mcabundaberg.org.au](mailto:bundytoylibrary@mcabundaberg.org.au)



# Listen Along the Way: Audio Guides

Let your senses travel with [Vacayit](#), a free audio guide platform made for exploring in your own time, at your own pace. Vacayit audio guides are designed to be inclusive and easy to use — perfect for blind and low-vision travellers, or anyone who enjoys listening to stories, sounds and local insights while on the move. Whether you're into coastal walks, local history, reef adventures or tasting trails, there's a Bundaberg region guide for you. Scan a QR Code below or visit [Vacayit's website](#) and search 'Bundaberg' to start listening.



## Introducing Bundaberg Region

Scan this QR code or visit the [Introducing Bundaberg Region audio guide](#) to discover what makes Bundaberg unforgettable.



## Destination: Southern Great Barrier Reef

Scan this QR code or visit the [Southern Great Barrier Reef audio guide](#) to discover a day on the reef from Bundaberg.



## Destination: Bargara and the Coral Coast

Scan this QR code or visit the [Bargara and Coral Coast audio guide](#) to explore the regions coastal towns.



## Self-Guided: Bundaberg Heritage Trail

Scan this QR code or visit the [Bundaberg Heritage Trail audio guide](#) to explore historic highlights across the region.



## Self-Guided: Bundaberg Taste Trail

Scan this QR code or visit the [Bundaberg Taste Trail audio guide](#) for more delicious food sensations.



## Self-Guided: Bundaberg Sip and Swirl Trail

Scan this QR code or visit the [Bundaberg Sip and Swirl Discovery Trail audio guide](#) to explore local flavours and must-try drinks.



# BUNDABERG REGION

## Accessible Destination Guide 2025

*All images courtesy of STEPS Bundaberg, Paul Beutel, Sean Scott, Mark Lehn, Bundy Bowl and Liesure, Turtle Sands, Bundaberg Rum, Greyhound Australia, Bundaberg Regional Council, and GetAboutAble. Thank you to the many contributors who supplied editorial material and photographs for this publication.*

*Disclaimer: This free guide is published by Bundaberg Tourism Ltd on behalf of Bundaberg Region operators. Information is provided in good faith based on information supplied by various other parties and is subject to change without notice. Whilst every effort has been made to ensure the accuracy of the information supplied no responsibility for any changes can be accepted for loss, damage, inconvenience, delay or injury due to negligence, errors, changes or omissions. Always check the latest information for any changes. All material contained in this publication is subject to copyright and may not be reproduced, copied, or transmitted in any form without the prior written consent of Bundaberg Region Ltd.*

#visitbundaberg

@visitbundaberg