

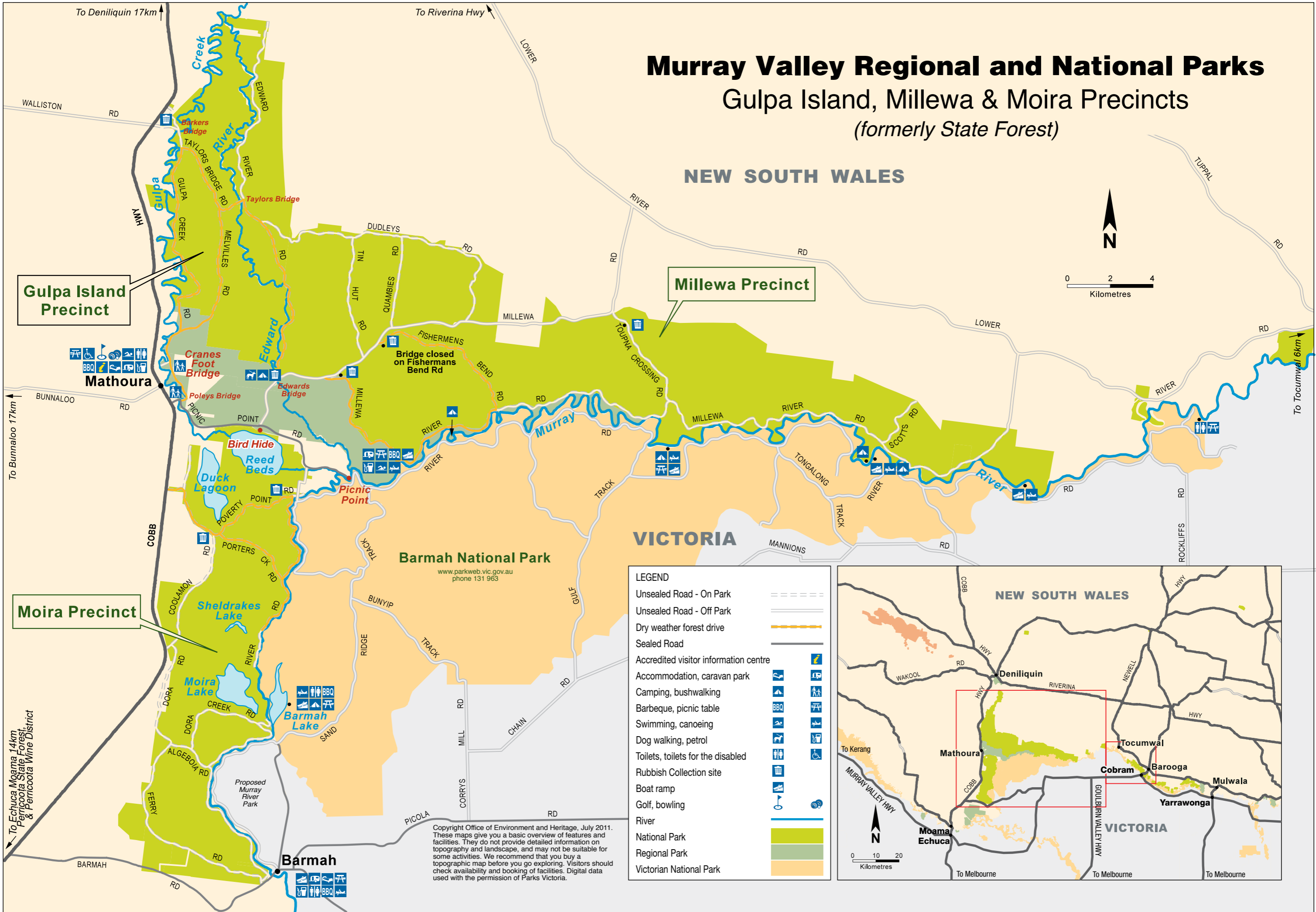
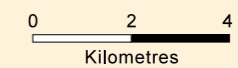
Murray Valley Regional and National Parks

Gulpa Island, Millewa & Moira Precincts

(formerly State Forest)

NEW SOUTH WALES

VICTORIA



Gulpa Island Precinct

Millewa Precinct

Moira Precinct

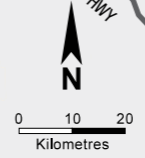
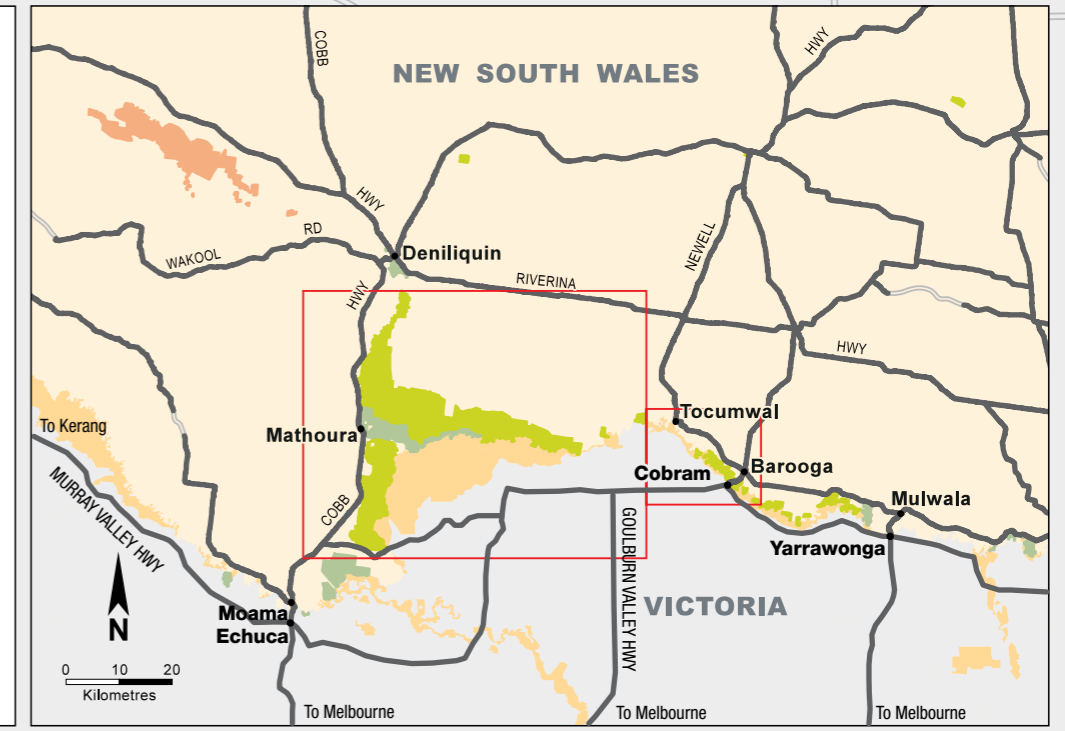
Barmah National Park

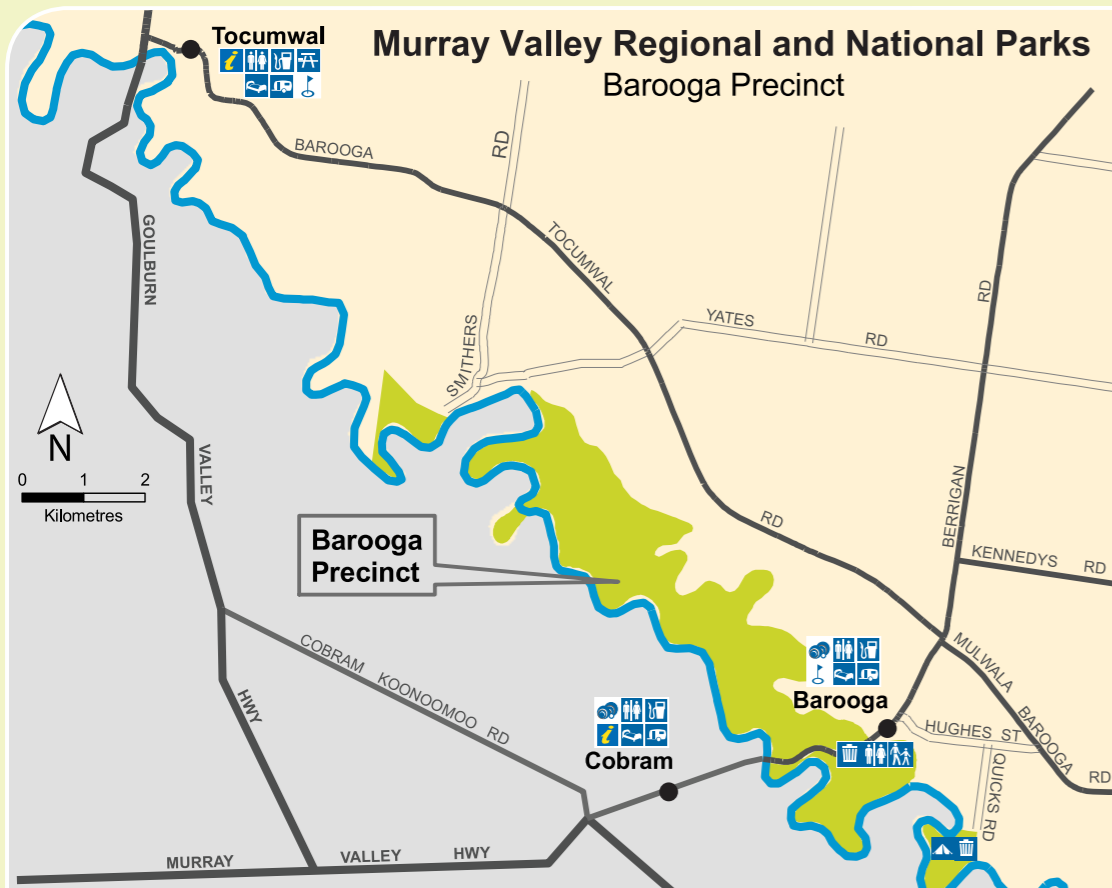
www.parkweb.vic.gov.au
phone 131 963

LEGEND

Unsealed Road - On Park	
Unsealed Road - Off Park	
Dry weather forest drive	
Sealed Road	
Accredited visitor information centre	
Accommodation, caravan park	
Camping, bushwalking	
Barbeque, picnic table	
Swimming, canoeing	
Dog walking, petrol	
Toilets, toilets for the disabled	
Rubbish Collection site	
Boat ramp	
Golf, bowling	
River	
National Park	
Regional Park	
Victorian National Park	

Copyright Office of Environment and Heritage, July 2011.
These maps give you a basic overview of features and facilities. They do not provide detailed information on topography and landscape, and may not be suitable for some activities. We recommend that you buy a topographic map before you go exploring. Visitors should check availability and booking of facilities. Digital data used with the permission of Parks Victoria.





FREQUENTLY ASKED QUESTIONS

Do I need to pay any fees to enter the new parks?
No, there are no entry fees.

What activities can I do in the national and regional parks?

You are welcome to do the following activities:

- camping • enjoy a picnic or a barbecue
- swimming, boating or canoeing
- bushwalking and orienteering
- scenic forest drives • cycling • fishing
- bird watching and photography

Can I bring my dog to the parks?

Dogs are allowed in all regional parks. You can take your dog for a walk or camping. Please check the maps to find the regional parks.

Is hunting permitted?

Hunting is about the only activity not permitted in national or regional parks.



discover our world



RIVER RED GUMS NATIONAL PARKS

The forests of the Riverina are exceptional places. They have an abundance of plants, animals and birds, are significant to Aboriginal people and are important to the local and regional communities that surround them.

In July 2010, the NSW Government created almost 66,000 ha of national parks, over 15,000 ha of regional parks and 21,500 ha of Indigenous protected areas throughout the Riverina. Together with existing parks in Victoria, they now form the world's largest area of protected river red gums in conservation reserves in the world.

You can enjoy these magnificent forests any time of the year; go camping, boating, fishing, walking and bird watching; or simply just relax and unwind on the banks of the mighty Murray.

For information on these parks visit:
www.riverredgums.nsw.gov.au

Murray Area Office
Factory 5, Lot 8 Bowlan Rd Moama 2731
ph: 03 5483 9100

NATURAL FEATURES

The iconic feature of this region is the towering river red gums.

These majestic trees grow along the banks of rivers, wetlands and channels and are an essential part of the region's ecosystem. The Millewa group of forests, together with the Barmah forest in Victoria, forms the largest continuous river red gum forest in the world.

One of the most beautiful and ecologically important parts of the region is the RAMSAR listed wetlands. These wetlands are an internationally significant breeding habitat for 18 migratory bird species, including the vulnerable Pied Honeyeater.

Over 60 native animals and 40 plant species listed as threatened call the region home. These new parks will ensure their continued protection and survival.

CULTURAL FEATURES

The area has been continuously occupied for thousands of years by Aboriginal people. The forests, land and rivers are interwoven in Aboriginal storytelling and beliefs.

Evidence of the rich cultural use of the area can be seen in the scarred canoe trees and open campsites that dot the landscape.

To make a canoe, firstly a suitable tree was selected, and being careful not to ring-bark the tree, a large sheet of bark was cut from the trunk. The bark was then soaked, shaped and fired for strength.



nswnationalparks.com.au

VISITOR INFORMATION CENTRES IN THE REGION

Balranald • 81 Market Street, NSW 2715
Ph: (03) 5020 1599 • Toll Free: 1800 444 043
www.balranald.nsw.gov.au

Cobram/Barooga
2 Station Stram VIC 3644
Ph: (03) 5872 2132 • www.cobrambarooga.org.au

Echuca Moama • Ph: (03) 5480 7555
Old Pump Station, 2 Heygarth Street,
Echuca VIC 3564 • www.echucamoama.com

Hay
407 Moppett St, NSW 2711
Ph: (02) 6993 4045 • www.hay.nsw.gov.au

Mathoura
23 Moama Street, NSW 2710
Ph: (03) 5884 3730 • www.mathoura.com

Shepparton
534 Wyndham Street, VIC 3630
Ph: (03) 5831 4400 • www.greatershepparton.com.au

Barham
25 Murray Street, NSW 2732
Ph: (03) 5453 3200 • www.wakool.nsw.gov.au

Deniliquin • George Street, NSW 2710
Ph: (03) 5898 3120 • Toll Free: 1800 650 712
www.denitourism.com.au

Griffith • Ph: (02) 6962 4145 • Toll Free: 1800 681 141
Corner Banna and Jondaryan Avenue, NSW 2680
www.griffith.com.au

Leeton
10 Yanco Avenue, NSW 2705
Ph: (02) 6953 6481 • www.leetontourism.com.au

Narrandera • Newell Highway, NSW 2700
Toll Free: 1800 672 392 • Ph: (02) 6959 1766
www.narrandera.com.au

Tocumwal
41-43 Deniliquin Street, NSW 2714
Ph: (03) 5874 2517 • www.toconthemurray.com.au

In emergency call 000