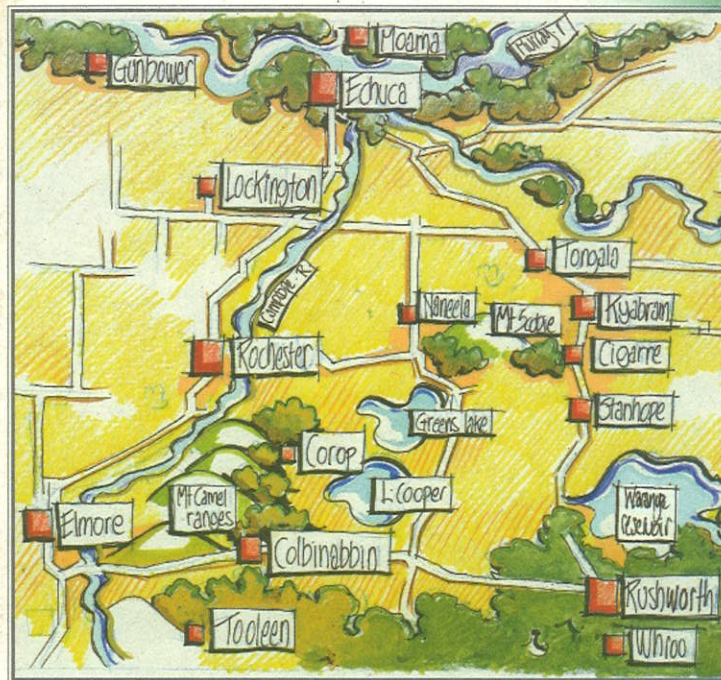


POINTS OF INTEREST

Tongala Historical Walk

Total distance of this walk is approximately 1km.

1. Golden Cow Dairy Centre: Baby change facilities, disabled toilets, featuring daily milkings (excepting Tuesdays & Saturdays) dairy industry displays, information & history and a cafe open all day.
2. Tongala Bowling Club.
3. Former Railway Platform & Historic Crane.
4. Vietnam Veterans Avenue of Honour honouring Australian soldiers who died in Vietnam.
5. Potts Village Green & Children's Playground.
6. Mangan Street shops licensed supermarket, cafes, news agency, hot bread shop, butcher & hardware.
7. Community Bank & ATM.
8. Light Horseman statue honouring the famous horsemen of the First World War.
9. Soundshell & Gardens, BBQ, Picnic facilities (elect) & disabled toilet.
10. Nestlé factory.
11. Nestlé outdoor murals on dairy industry history: Another 11 murals on Tongala history are scattered throughout the shopping area.
12. Tongala Caravan Park: Just off the map on the road to the south of the Golden Cow and the sporting reserve.



Map of Campaspe Region

Tongala Area Information

Tongala is located between Echuca and Kyabram, and is the main service centre for its immediate rural community. The town is well serviced with many community recreational & sporting facilities.

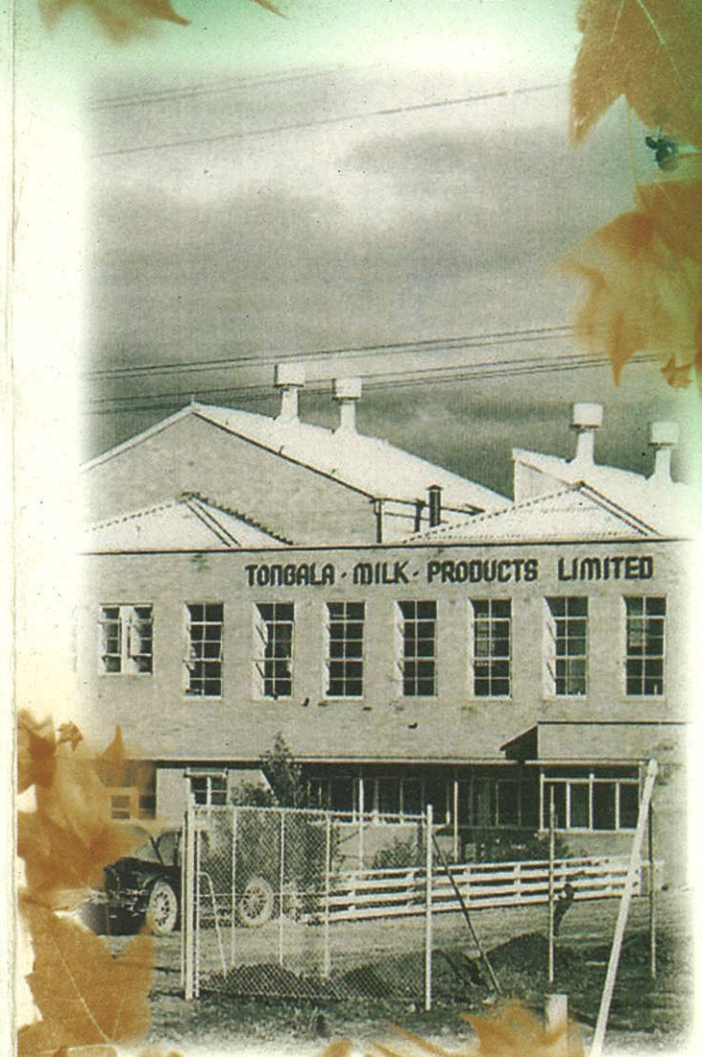
Agriculture, especially dairying, is the most significant industry in the town. Dairy related businesses including food processing, grain processing and an abattoir are important employers for the Tongala community.

Tongala was named by Edward Mickelthwaite Curr (1820-1889) in 1841, who at the time held a station that stretched to the Murray River. Tongala is the Aboriginal name for local section of Murray River. Curr wrote a book on his interaction with the aborigines, with many extracts quoted in the Yorta Yorta land rights court case.

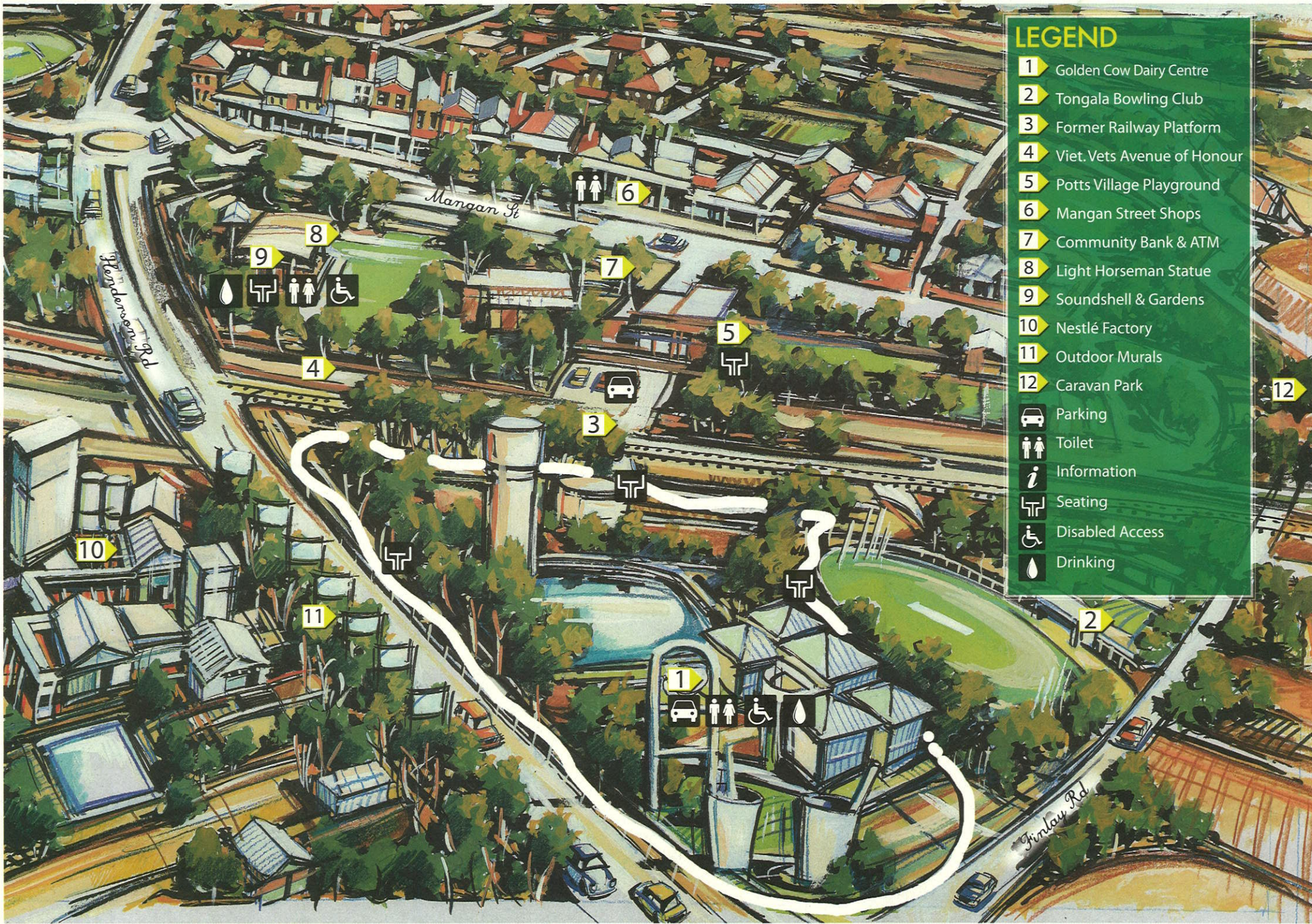


Funding for the Community Walking Grants program is made available through the Victorian Government's Community Support Fund.

Tongala HERITAGE WALK



Forerunner to the Nestlé Factory



LEGEND

- 1 Golden Cow Dairy Centre
- 2 Tongala Bowling Club
- 3 Former Railway Platform
- 4 Viet. Vets Avenue of Honour
- 5 Potts Village Playground
- 6 Mangan Street Shops
- 7 Community Bank & ATM
- 8 Light Horseman Statue
- 9 Soundshell & Gardens
- 10 Nestlé Factory
- 11 Outdoor Murals
- 12 Caravan Park
- Parking
- Toilet
- Information
- Seating
- Disabled Access
- Drinking