



The Whitsundays

Queensland 74 Island Wonders

VISITOR GUIDE 2016-2017

Book now at www.tourismwhitsundays.com.au



Where in the world would you rather be?

There's plenty to do during your Hamilton Island holiday, in the heart of the Great Barrier Reef. Enjoy a wide selection of bars and restaurants, year-round cultural and sporting events, an 18-hole championship golf course and an abundance of water sports and activities - and that's just the start. To find out more, visit hamiltonisland.com.au



WELCOME TO THE WHITSUNDAYS

Welcome to the beautiful Whitsundays, 74 island wonders in the heart of the Great Barrier Reef. One of the best holiday destinations in Australia, the Whitsundays is renowned for sailing, beautiful beaches, iconic resorts and the Great Barrier Reef.

From charming coastal towns, beautiful islands, protected rainforest, stunning beaches including the world famous Whitehaven Beach, the natural attractions of the Whitsundays offers a diverse range of experiences.

The Whitsundays offers some of the world's best sailing, where you can charter a boat and cruise the waters of the Whitsunday passage surrounded by uninhabited islands and breathtaking sunsets. If adrenaline is more your thing, you can skim across the water with one of the high speed tours or take a scenic flight and soar across Heart Reef and Hill Inlet.

Swim, snorkel and scuba dive with thousands of brightly coloured fish and a variety of corals in the Great Barrier Reef and witness diverse marine life including humpback whales, dolphins, turtles and dugongs.

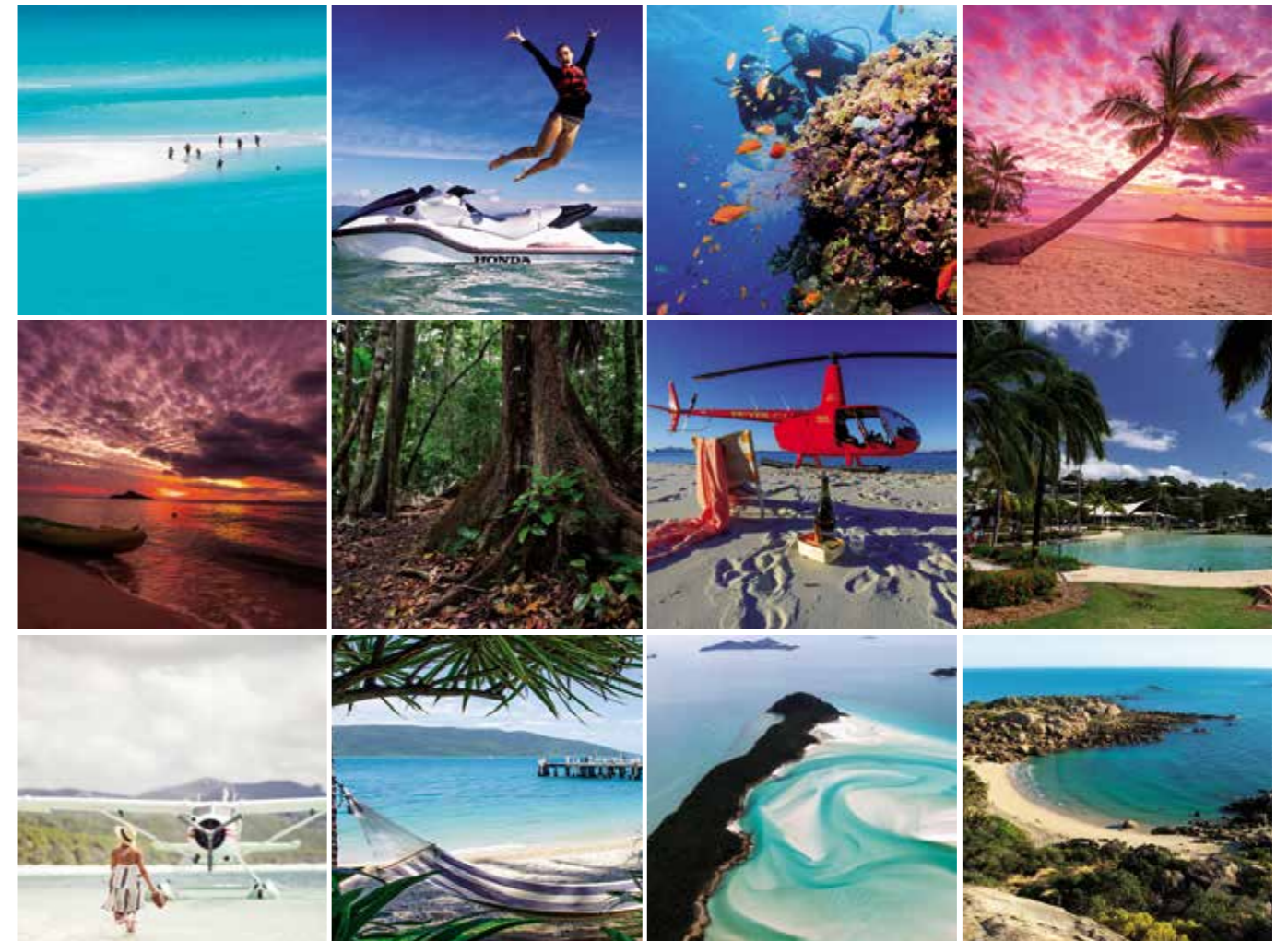
Spend the day on the white silica sands of world-famous Whitehaven Beach or explore the breathtaking beauty of Hill Inlet, a stunning cove where the tide shifts the sand and water to create a swirling fusion of turquoise colours.

Soak up the tropical, laid-back lifestyle, laze on one of the many uncrowded beaches, relax with a sunset cocktail and indulge in fresh local seafood at one of the many al-fresco restaurants.

You'll find every kind of beauty, adventure and luxury here in the Whitsundays, in the heart of the Great Barrier Reef.

CONTENTS

2	Getting Here and Around	12-17	Destinations	40-41	Historical and Heritage
4-5	Events Calendar	18-23	Attractions	42-43	Local Flavours
6-7	Map of the Whitsundays	24-33	Experiences	44-45	Weddings
9	What's New	34-35	Things to Do	46-47	Pet Friendly and Accessible Options
10	Share your Whitsundays Experience!	36-39	Family Time	48-60	Advertising & Whitsundays Directory



EVENTS CALENDAR

OCTOBER 2016		1 Bowen Cup Race Day BOWEN	2 Cooking Master Classes with THE FOOD JUNKIE	 8-9 Whitsunday Relay for Life PROSERPINE SHOWGROUNDS
15 White on White WHITEHAVEN BEACH	16 Bowen Triathlon BOWEN	22 Bottoms on Grass Spring Carnival – Dress to impress BOWEN	29 Whitsunday Tourism Awards CAPE GLOUCESTER BEACH RESORT Professionals Whitsundays Annual Sponsor Day PROSERPINE GOLF CLUB	
OCTOBER/NOVEMBER 2016		30-3 PGA Professionals Championship hosted by Dent Island HAMILTON ISLAND	31-2 Gem of the Coral Coast Festival BOWEN	NOVEMBER 2016
 12 Fujifilm Hamilton Island Triathlon HAMILTON ISLAND	 13 Hamilton Island Junior Triathlon and Slash'n Dash HAMILTON ISLAND Whitehaven Beach Ocean Swim WHITEHAVEN BEACH	3-6 Airlie Beach Festival of Music AIRLIE BEACH		
19 Celebrity Chef Feast AIRLIE BEACH	19-23 Schoolies Week AIRLIE BEACH	26-27 Grazing BMP Reef to Ranges BOWEN SHOWGROUNDS	DECEMBER 2016	18 Cooking Master Classes with THE FOOD JUNKIE
Christmas Carols on the beach AIRLIE BEACH	JANUARY 2017	15 Cooking Master Classes with THE FOOD JUNKIE	26 Australia Day Celebrations THE WHITSUNDAYS	28 Chinese New Year (Year of the Rooster) THE WHITSUNDAYS

To find out about more events in the region or for more information visit www.tourismwhitsundays.com.au/whats-on/events

FEBRUARY 2017	5 Cooking Master Classes with THE FOOD JUNKIE	26 Whitsunday Wedding & Honeymoon Expo AIRLIE BEACH		MARCH 2017
26 Outrigger Whitsunday Grand Prix Regatta AIRLIE BEACH	26 Cooking Master Classes with THE FOOD JUNKIE	APRIL 2017	1-7 Chocolate Week BIG4 ADVENTURE WHITSUNDAYS RESORT	Easter Race Day BOWEN TURF CLUB
30 Hamilton Hilly Marathon HAMILTON ISLAND	MAY 2017	7-13 Whitsunday SUP Race Day WHITSUNDAY ISLANDS	14 Mother's Day Classic HAMILTON ISLAND	19-21 Whitsunday Latin Festival CAPE GLOUCESTER BEACH RESORT
JUNE 2017	Whitsunday Cup Race Day BOWEN	Bowen River Rodeo and Campdraft COLLINSVILLE		Lions Dingo Beach Family Whitfunday DINGO BEACH
 18 The Great Whitehaven Beach Run WHITEHAVEN BEACH	23-24 The Whitsunday Show PROSERPINE	27 Bowen Show BOWEN	JULY 2017	1-7 Whitsunday Creative Arts Festival AIRLIE BEACH
16-17 Airlie Beach Running Festival AIRLIE BEACH		22-23 2017 Bowen Offshore Superboats BOWEN FORESHORE	AUGUST 2017	10-17 Airlie Beach Race Week AIRLIE BEACH
19 Great Whitsundays Fun Race and Pirate Party (sailing) AIRLIE BEACH	19-26 Audi Hamilton Island Race Week HAMILTON ISLAND	SEPTEMBER 2017		2-3 Airlie Beach Triathlon AIRLIE BEACH

To find out about more events in the region or for more information visit www.tourismwhitsundays.com.au/whats-on/events



THE GREAT BARRIER REEF MARINE PARK

PACIFIC OCEAN

Townsville

Bowen

Cape Gloucester

Hydeaway Bay

Dingo Beach

Pacific Coast Touring Route (Bruce Highway)

Daydream Island

Whitsunday Airport

Airlie Beach

Shute Harbour

South Molle Island

Whitsunday Island

Hill Inlet

Whitehaven Beach

Peter Faust Dam

Proserpine

Cedar Creek Falls

Long Island

Great Barrier Reef Airport

Hamilton Island

Collinsville

Whitsunday Coast Airport

Proserpine River

Conway National Park

Lindeman Island

Laguna Whitsundays

Mackay

Midge Point

LEGEND

- Major Airport
- Small Airport (light aircraft only)
- Train Route



AUSTRALIA'S FAMOUS REEF ISLAND



FREE CALL 1800 075 040 Tel +61 7 3259 2350 Email reservations@daydreamisland.com

DAYDREAMISLAND.COM

take the train

to the Whitsundays!

Travel in a Premium Economy Seat or the revolutionary lie-flat RailBed.

Book early and save!

Premium Economy Seat
Townsville to Airlie Beach
from **\$76*** per adult one-way



RailBed with all-inclusive meals
Brisbane to Airlie Beach
from **\$329*** per adult one-way



The Spirit of Queensland, contemporary, comfortable and designed for relaxation, is the modern rail experience along Queensland's coast.

To book visit queenslandrailtravel.com.au, call 1300 783 553 or see your local travel agent

*Conditions apply. Prices are per person based on B-Quick fare conditions, subject to availability. Other concession discounts are available for applicable card holders. Queensland Rail Travel reserves the right to make changes without notice, for full booking terms and conditions visit queenslandrailtravel.com.au. QRT1011.2_0616



WHAT'S NEW IN THE WHITSUNDAYS

Some of the latest products to come to the Whitsundays!



Pictured clockwise from top left:

- ◆ Heart Hotel and Gallery
- ◆ Ride to Paradise
- ◆ Lady Enid
- ◆ Pioneer Jet Whitsundays
- ◆ Airlie Beach Skydivers
- ◆ Earlando
- ◆ Just Tuk'n Around
- ◆ Airlie Beach Treehouse
- ◆ Whitsunday Bliss
- ◆ Lure

SHARE YOUR WHITSUNDAY EXPERIENCE!

Share your #lovewhitsundays experience with us

For inspiration, updates and the latest deals and tips, stay connected via Instagram, Twitter, Facebook and YouTube! You can post your photos and videos on the official destination social media platforms using the handles below:

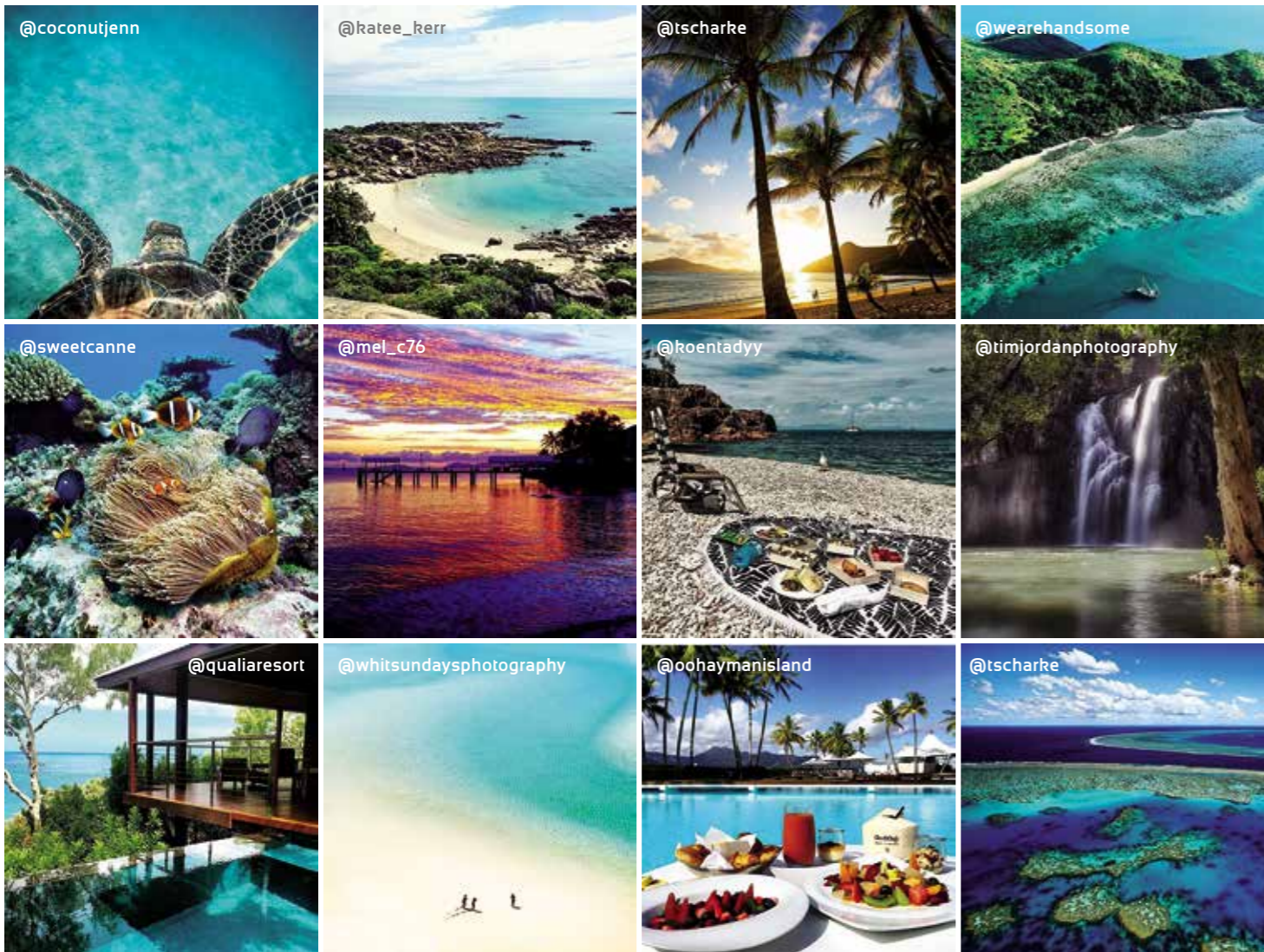
Facebook – [facebook.com/WhitsundaysQLD](https://www.facebook.com/WhitsundaysQLD)

Instagram – [@whitsundaysqld](https://www.instagram.com/whitsundaysqld)

Twitter – twitter.com/QLDWhitsundays

Remember to use the official hashtag #lovewhitsundays on all social media posts and your content may be shared globally!

INSTAGRAM BUCKET LIST



Tourism Whitsundays would like to thank Tourism and Events Queensland, Aaron Jamieson Photography, Tolita Dukes, Brooke Miles, Iconic Bride Photography, Cruise Whitsundays, Tropix Photography for providing images.



An affiliated group of owner operators providing overnight sailing accommodation, Paradise Cove accommodation and adventure day trips.



SAILING DIVING SNORKELLING KAYAKING BEACH SWIMMING BUSHWALKING 4WD ADVENTURES



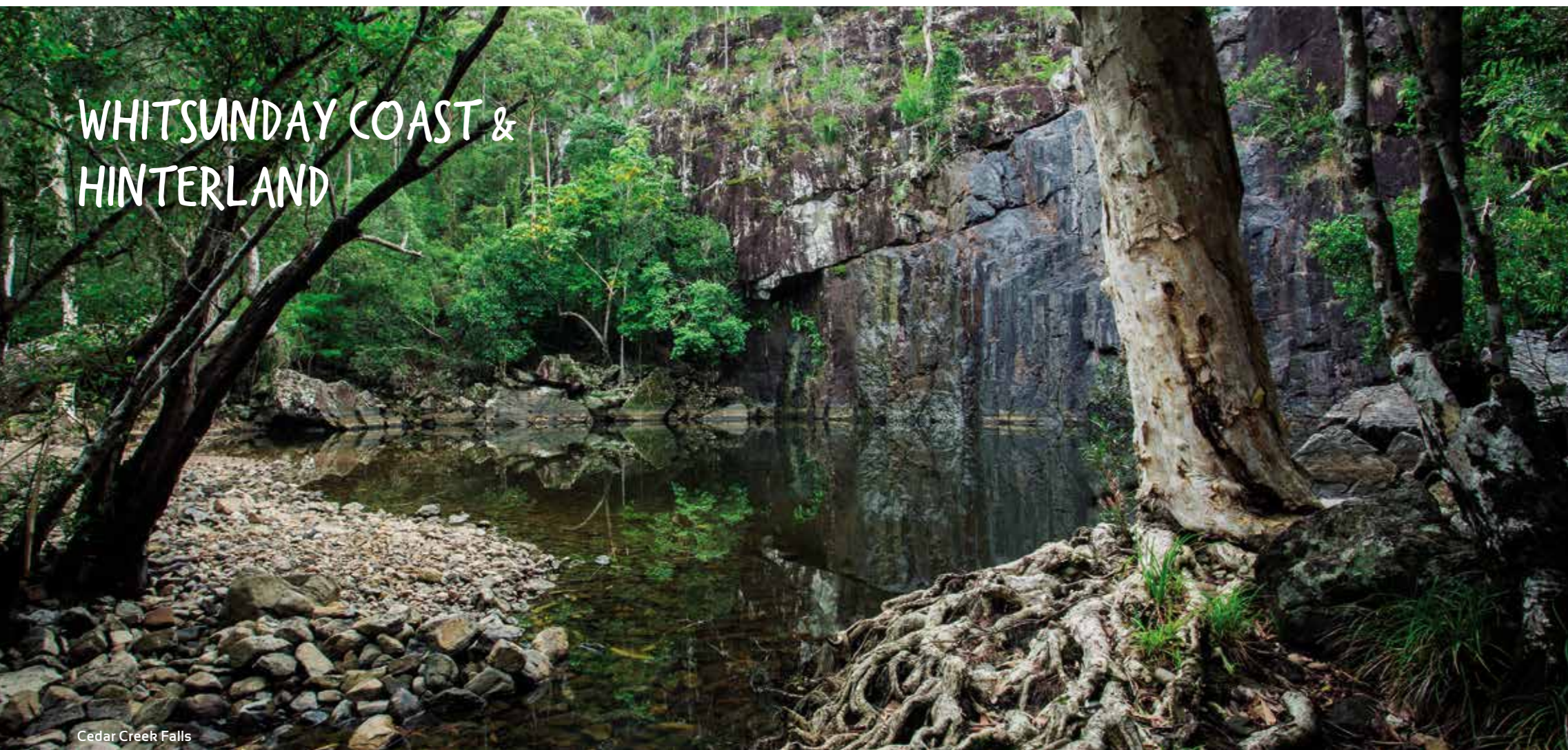
www.whitsailing.com

1300 653 100 +61 (0) 7 4940 2000 res@whitsailing.com 402 Shute Harbour Rd, Airlie Beach



RESORT ACCOMMODATION, WITH THE CONVENIENCE OF APARTMENT LIVING.
For reservations call (+61) 7 4969 9999 | E: stay@wahi.com.au | www.wahi.com.au

WHITSUNDAY COAST & HINTERLAND



Cedar Creek Falls



Inset images clockwise from top left: Big mango – Bowen; Sunset Hydeaway Bay; Proserpine; Airlie Beach.

STRETCHING FROM VIBRANT COSMOPOLITAN AIRLIE BEACH TO THE SECLUDED BAYS OF BOWEN IN THE NORTH, AND WEST THROUGH THE CANEFIELDS OF COUNTRY TOWN PROSERPINE TO THE ROLLING HILLS OF HISTORICAL COLLINSVILLE, THE WHITSUNDAY COAST AND HINTERLAND IS INCREDIBLY DIVERSE AND PICTURESQUE. OFFERING A VARIETY OF EXPERIENCES AND OPTIONS FOR ALL BUDGETS, THE MAINLAND IS AN IDEAL BASE FOR HOLIDAY FUN AND ADVENTURE IN THE WHITSUNDAYS.

Easily accessible by car, plane and ferry, the Whitsunday Coast and Hinterland is the launching pad for activities as varied as sailing, kayaking, crocodile spotting, food trails, historical trails, scenic flights and snorkelling. With all of this at your fingertips, there will always be something interesting and exciting to discover in the Whitsundays!

AIRLIE BEACH

With its stunning outlook over the bays and islands, and the tropical feel of an island resort, Airlie Beach is the perfect base for your next holiday to the Whitsundays. The largest town on the Whitsundays Coast, Airlie Beach offers a lively array of dining and nightlife, shopping and relaxation. The mountainous coastal town boasts a broad range of accommodation from stylish 5 star resort hotels on the water's edge and apartments on the hillside overlooking the

panorama of beach, bay and islands, to bed and breakfast options, motels, camping and caravan parks as well as backpacker accommodation.

Airlie Beach is the gateway to the Great Barrier Reef and the island resorts, and the main hub for all activities on the Reef including sailing, jetskiing and scenic flights. The Airlie Beach Lagoon on the foreshore is a popular spot to relax and unwind, or visit nearby Conway National Park and Cedar Creek Falls to discover quiet coves, secluded beaches and tropical rainforest.

BOWEN

Bowen is one of the charming towns on the Whitsunday Coast, with award winning, palm fringed beaches, beautiful bays and a warm tropical climate. Situated in the northern region of the Whitsundays on the shores of Edgecumbe Bay, 45 minutes north of Airlie Beach, this picturesque seaside town offers accommodation ranging from backpackers and caravan parks, to 4 star absolute beachfront apartments. Taste some delicious mango sorbet at the Big Mango, climb to the top of Flagstaff Hill for panoramic views of the coast, follow the famous mural trail through this historic Queensland town, and visit the various locations used in the blockbuster Baz Luhrmann film 'Australia'.

CANNONVALE

Just minutes from the tourist hot spot of Airlie Beach, Cannonvale is a quiet, peaceful beachside community, conveniently close to all the Whitsundays has to offer. A perfect place to base the family, with a range of accommodation on offer, Cannonvale's beautiful sheltered beach is perfect for splashing about with the kids. As the main residential centre in the area, the town has good shopping facilities as well as cafes, banks and post office. Launch your boat at the Volunteer Marine Rescue Club boat ramp on Altmann Avenue for a spot of fishing in the bays.

COLLINSVILLE

Collinsville is a friendly country town known for its historic mining attractions, with one of the main highlights a visit to the Coalface Experience Museum and Pit Pony Experience. There's a small air strip for recreational planes and what must be one of the driest golf courses in Australia! It also features stunning hinterland, a large dam for fishing and watersports and excellent outback four wheel driving.

HYDEAWAY BAY

Hydeaway Bay and its sister town Dingo Beach are situated at the top end of the Whitsundays, accessible by road 45 minutes north of Airlie Beach. With endless horizons and picturesque water views dotted with islands, Hydeaway Bay and Dingo Beach are perfect for lazy days spent beachcombing or exploring the calm bays in a kayak or stand-up-paddle board, or putting in a long day fishing. Travellers can stop for a bite to eat and a refreshing beverage at one of the two resorts at Cape Gloucester or the Dingo Beach pub. Accommodation in the area ranges from the caravan park and pub motel, to private holiday homes and the two Cape Gloucester resorts.

PROSERPINE

Just 20 minutes inland from Airlie Beach, Proserpine is a charming Aussie town offering traditional country hospitality. Sugar cane and cattle grazing have been the economic mainstays in the town since the late 1800s and the eerie glow of cane fires can still be seen at night from late June onwards, a spectacular sight to catch on camera.

The main street's well preserved 'art deco' shop architecture is a reminder of how life used to be, with boutique shopping and hidden gems located in the laneways off the main street. There is a good range of accommodation in Proserpine from caravan parks and backpacker accommodation to motels conveniently located on the Bruce Highway.



Images clockwise from top left: Sunrise, Qualia Resort – Hamilton Island; Hayman Island; Daydream Island & Spa; Rainforest Massage Hayman Island; Daydream Island; Wallabies on Daydream Island; Shaw, Gabirra and Baynham Islands; Long Island pier; Palm Bat, Long Island; Azure Hayman Island; Hamilton Island; Whitehaven Beach seaplane.

HAYMAN ISLAND

One&Only Hayman Island, in the heart of the Great Barrier Reef presents astonishing natural beauty, restorative peace, indulgence and adventure. Australia’s iconic private island resort is located off the coast of Queensland, nestled at the northernmost point of the Whitsunday archipelago, beyond verdant cliffs reaching into endless sky. Discover an array of opportunities to delight the senses in a place where the beauty of nature inspires each day.

Relish in spectacular dining experiences, surrender to a signature Ocean Dreaming Massage, explore private beaches and immerse yourself in captivating underwater adventures. One&Only Hayman Island is a unique destination of discovery set in one of the seven wonders of the natural world – Australia’s Great Barrier Reef.

LONG ISLAND

Long Island is the closest island to the mainland, and as the name suggests is 9km long while only being 400m wide at its widest point. Long Island is mostly national park and has 13km of walking trails to explore the plentiful native flora and fauna on this dramatic natural landscape.

Surrounded by secluded bays and expansive coral fringing reefs great for snorkelling and beachcombing, Long Island is a quiet paradise for visitors seeking seclusion and tranquillity. The only resort currently open, Palm Bay Resort offers a unique holiday experience combining gorgeous Balinese style accommodation dwellings with the convenience and affordability of self-catering.

MULTI-AWARD WINNING

whitsunday **jetski tours**

GUIDED JETSKI TOURS
YOUR RIDE... YOUR ADVENTURE!

THREE TERRIFIC TOURS
 1½ hour **AIRLIE ADVENTURE**
 2½ hour **TWO ISLAND SAFARI**
 4½ hour **DAYDREAM EXTREME**

NO EXPERIENCE NECESSARY NO LICENCE REQUIRED

2015 WINNER
 2015 WINNER
 2014 WINNER

0459 JETSKI 538 754
jetskitour.com.au

AIRLIE BEACH
SOUTH MOLLE ISLAND
DAYDREAM ISLAND

Ocean Rafting™
 THE RIDE OF YOUR LIFE!

RIDE, BEACH, SNORKEL, BUSHWALK... ALL IN ONE DAY!

- Whitehaven Beach
- Hill Inlet Lookout & Beach
- Top Snorkel Destinations
- Guided Island Bushwalks
- Departs Airlie Beach Daily

P: 07 4946 6848
 tours@oceanrafting.com.au
 www.oceanrafting.com.au

2012 Winner Australian Tourism Awards
 tourism awards
 tourism awards
 ECO CERTIFIED
 Whitsunday WINNER
 Whitsunday WINNER



IN THE HEART OF THE GREAT BARRIER REEF

Aerial – Heart Reef, Great Barrier Reef



THE WORLD HERITAGE-LISTED GREAT BARRIER REEF IS ONE OF THE SEVEN NATURAL WONDERS OF THE WORLD AND THE LARGEST LIVING STRUCTURE, VISIBLE FROM OUTER SPACE AND STRETCHING OVER 2000KM IN LENGTH ALONG THE QUEENSLAND COAST IN AUSTRALIA. THE WHITSUNDAYS REGION IS IDEALLY LOCATED IN THE HEART OF THE GREAT BARRIER REEF, AND IS THE PERFECT PLACE TO EXPLORE THIS AQUATIC WONDERLAND.

WAYS TO EXPLORE THE REEF

- ◆ Swim, snorkel and scuba dive with the colourful marine life and discover an unforgettable underwater world on one of the many day or overnight tours
- ◆ Take a scenic flight over the Reef and see its incredible expanse from above, including the romantic Heart Reef
- ◆ Set sail and discover the many excellent snorkel and dive spots in the Whitsundays
- ◆ Camp overnight on a pontoon and spend the night under the stars in the middle of the Reef.

WHAT YOU NEED TO KNOW

- ◆ The 'outer' Great Barrier Reef is around 40 nautical miles off the Whitsunday coast, about 2 hours' boat ride.
- ◆ The Whitsunday Islands and coast all have fringing reefs very close to the shore, with abundant marine life to explore.
- ◆ Each year between June and September, humpback whales can be commonly seen in the protected waters of the Whitsunday Islands, during their annual migration north.
- ◆ A large variety of day and overnight tours depart the Whitsunday coast and islands and travel to the Reef every day. Local scuba dive companies cater for every skill level from novice to dive master.

MORE THAN JUST FISH AND CORAL

The Great Barrier Reef is home to a stunning array of animals, from microscopic plankton to whales weighing more than 100 tonnes. More than just fish and coral, the Great Barrier Reef supports:

- ◆ 1625 species of fish, including 1400 coral reef species
- ◆ More than 3000 species of molluscs (shells)
- ◆ 630 species of echinoderm (starfish, sea urchins)
- ◆ 14 breeding species of sea snakes
- ◆ 215 species of birds including 22 species of seabirds and 32 species of shorebirds
- ◆ Six of the world's seven species of marine turtle
- ◆ 30 species of whales and dolphins
- ◆ One of the world's most important dugong populations
- ◆ 133 species of sharks and rays.

HEART REEF

The magical, naturally formed Heart Reef is located in the Great Barrier Reef near the Whitsundays, and this stunning composition of coral is best viewed from the air. Take a seaplane or helicopter flight to admire this beautiful sight, or surprise a loved one with the ultimate gesture over the region's most romantic natural icon. Many tour companies will combine a scenic flight over Heart Reef with other breathtaking spots in the Whitsundays, including Whitehaven Beach and Hill Inlet.

Heart Reef was discovered in 1975 by one of Air Whitsunday's pilots and is now an internationally-recognised attraction of the Whitsundays and the site of many proposals and declarations of love over the years. If planning something special during your flight, let your pilot know your plans and they'll be able to help you with some extra flight time over the famous icon.

CONSERVATION AND ECOTOURISM

The local tourism industry is very conscious of educating visitors to our beautiful region about how to enjoy the Great Barrier Reef, while ensuring there is no negative impact on the environment. All boat and tour operators provide educational information about the Reef and local marine life, and warn visitors to 'look, not touch' when participating in snorkelling and diving activities.

Australia's Eco Certification program recognises tourism operators who provide genuine environmentally friendly tours, attraction and accommodation products. Operators are assessed on their economic, environmental and social sustainability and ecotourism principles such as business ethics, responsible marketing, contribution to conservation and working with communities.

There are three levels of accreditation available: Nature Tourism, Ecotourism and Advanced Ecotourism. Look for the logo when considering which operator to choose.





Hill Inlet



THE SEVEN-KILOMETRE STRETCH OF WHITE 98% SILICA SANDS AND CRYSTAL CLEAR WATERS OF WHITEHAVEN BEACH IS PRISTINE AND UNTOUCHED BY DEVELOPMENT. SPEND THE DAY ON THE BEACH OR EXPLORE THE BREATHTAKING BEAUTY OF HILL INLET, A STUNNING COVE AT THE NORTHERN END OF THE BEACH WHERE THE TIDE SHIFTS THE SAND AND WATER TO CREATE A SWIRLING FUSION OF TURQUOISE COLOURS.

For the best view of Hill Inlet, journey to the lookout at Tongue Point on Whitsunday Island. Time your lookout experience on low tide to fully experience the beautiful swirling sands. For bareboats, the best spot to anchor is in Tongue Bay, and tender into the beach to commence the short walk up the hill to the lookout across Hill Inlet and Whitehaven Beach and back down the other side to the secluded beach at the tip of Hill Inlet.

There are several ways to experience the beauty of Whitehaven Beach and Hill Inlet. However you choose to explore Whitehaven Beach, it will be an experience that you will remember for a lifetime.

OUR TOP TIPS:

- ◆ Many companies offer day trips to Whitehaven Beach and Hill Inlet by ferry, power boat or luxury yacht.
- ◆ Most overnight sailing trips also stop in at Whitehaven Beach and Hill Inlet.
- ◆ Self-sufficient boaties and campers can even anchor overnight off the beach, or book a national park campsite and camp on the southern end of the iconic Whitehaven Beach itself for as little as \$5.95 per night.
- ◆ Scenic helicopter and seaplane flights over Whitehaven Beach and Hill Inlet promise amazing aerial views.

DID YOU KNOW?

Whitehaven Beach was recently voted the 'Best Beach in the South Pacific' and 'Best Beach in Australia' in the 2016 TripAdvisor Travellers' Choice Awards.

NATIONAL PARKS AND CAMPING

THE WHITSUNDAYS REGION IS HOME TO A NUMBER OF SPECTACULAR NATIONAL PARKS AND RESERVES, IN PARTICULAR WHITSUNDAY ISLANDS NATIONAL PARK, GLOUCESTER ISLAND NATIONAL PARK, MOLLE ISLAND NATIONAL PARK, LINDEMAN ISLAND NATIONAL PARK AND CONWAY NATIONAL PARK ON THE MAINLAND AND NEIGHBOURING CAPE HILLSBOROUGH NATIONAL PARK AND EUNGELLA NATIONAL PARK TO THE SOUTH ARE WITHIN AN EASY TWO HOUR DRIVE FROM AIRLIE BEACH. WITH SO MANY DRAMATIC AND BEAUTIFUL LANDSCAPES IN THE WHITSUNDAYS, THERE IS NO REASON TO HOLIDAY ANYWHERE ELSE!

Conway National Park



Inset images clockwise from top left: Camp Fire; Cedar Creek in the Conway National Park; Starry Night on Daydream Island; Kayaking the Whitsunday Islands.

DISCOVER QUEENSLAND'S NATIONAL PARKS

Explore the aquatic wonderland of the Whitsundays, one of the world's best destinations for sailing, diving and snorkelling.

CONWAY NATIONAL PARK



Discover unspoilt beaches, rocky outcrops and spectacular coastal views over the scenic Whitsunday area. This park boasts Queensland's largest area of lowland tropical rainforest outside the tropical north. Feel like a true adventurer as you walk or boat into your beachside campsite overlooking the Whitsunday Islands. Take a few steps from your campsite and fish from the beach for your supper. If you're feeling adventurous, explore some of the many walking tracks on offer, ranging from short easy strolls to full

day hikes. Challenge yourself on a three day hike along the Conway Circuit, camping in gloriously-secluded campsites along the way; or bring your mountain bike and experience the rush of riding Conway Circuit's dual-use tracks.

Location and getting there

Conway's day-use area and Swamp Bay/Mount Rooper and Coral Beach car parks are 6.5–10km south-east from Airlie Beach along Shute Harbour Road. Forestry Road access to Conway Circuit is 10km west from Airlie Beach along Shute Harbour and Brandy Creek roads. Airlie Beach access to Conway Circuit is via Kara Crescent.

CONWAY CIRCUIT

Experience a different side of the Whitsundays when you explore the 27km Conway Circuit through Conway National Park. Travel through majestic tropical rainforest, relax by seasonal creeks and absorb the views beyond coastal townships to the Whitsunday Islands. Walk the 27km one-way track as a three day escape, bush camping for two nights along the route and arranging pick-up at the other end of the trail. If you prefer shorter walks, explore the short circuit and return tracks options branching off the main trail. Conway Circuit is also popular with mountain bikers. Experienced riders can tackle the trail as a four hour circuit, starting from Forestry Road, finishing at Kara Crescent in Airlie Beach and returning to the start point along Shute Harbour, Brandy Creek and Forestry roads.

WHITSUNDAY ISLANDS NATIONAL PARK



Ahoy there sailor! Captain a sailing yacht or catamaran on an adventure through the crystal clear waters of the Great Barrier Reef Marine Park surrounding the Whitsunday national parks islands. Zig-zag between islands and explore secluded bays, glistening white beaches, rocky headlands and colourful fringing reefs. Find a secluded bay to pull up anchor or set sail for the pristine white silica sands of Whitehaven Beach. Experience stunning underwater scenery and diverse marine life as you dive among coral bommies, crevices and caves. If snorkelling is more your style, then the warm shallow waters of the Whitsundays will delight you with myriad colourful fish and coral formations. There's fun to be had above water too – mountain bike around South Molle Island's stunning tracks or explore some of the many walking trails on these picturesque islands.

Location and getting there

10–40km south-east off-shore from Airlie Beach. Access is from Airlie Beach or Shute Harbour by private boat, hire boat, kayak, commercial tour or transfer.

Camp like Robinson Crusoe

Camping on the Whitsunday islands is an unforgettable experience. Sheltered campsites are provided at Whitsunday Island, including the popular Whitehaven Beach. Small camping areas on Hook Island all offer great snorkelling straight from the shore. Northern Spit on Henning Island is popular with kayakers to break their journey. The Molle Islands are another favourite camping 'hot spot', or, if you want an island all to yourself, Planton and Denman islands cater for only one group at a time. When camping in the Whitsundays you must be entirely self-sufficient – just like Robinson Crusoe!

WHITSUNDAY NGARO SEA TRAIL

The Ngaro Sea Trail is one of Australia's most unique cultural experiences, following in the footsteps of the Ngaro people in a journey blending island seaways and sensational walking tracks. Hoist your sails, kayak to your heart's content, or join a guided tour over turquoise water to one of the three islands – Whitsunday, Hook and South Molle islands – on the trail. Choose between short strolls or challenging walks, connect to ancient Ngaro Aboriginal culture at the Ngaro Cultural Site on Hook Island and enjoy magnificent views or vast seascapes.

CAMPING BOOKINGS

Book your national park campsites in advance. Book and pay for your camping permit online at www.qld.gov.au/camping or phone 13 QGOV (13 74 68). Alternatively, visit an over-the-counter permit booking office in Airlie Beach (Whitsunday Island Camping Connection or the QPWS office). Book early to avoid disappointment.

SAILING



Sailing boats moored at Whitehaven Beach



THE GREAT BARRIER REEF PROTECTS THE WHITSUNDAY COAST AND ISLANDS FROM HUGE OCEAN SWELLS PROVIDING THE REGION WITH SOME OF THE SAFEST AND SMOOTHEST SAILING AND CRUISING WATERS IN THE WORLD. SAIL THROUGHOUT THE WATERS OF THE WHITSUNDAY ISLANDS AND FLIT FROM ONE ISLAND PARADISE TO THE NEXT. THE COMBINATION OF A WARM CLIMATE, STEADY BREEZES, CLEAR TURQUOISE WATERS, SECLUDED COVES AND ANCHORAGES, FRINGING REEFS AND ISOLATED BEACHES IS IRRESISTIBLE.

Step on-board a luxurious yacht or catamaran and set sail for your Whitsundays adventure. Drop the anchor in a secluded cove, take a dip or snorkel over fringing reefs with myriad colourful fish and corals.

You can do as much or as little as you like while exploring the waterways. Navigate your own holiday, join other travellers on a packaged overnight sailing adventure or hire a skipper to pull the ropes while you unwind on deck.

Whatever your choice, when you first step aboard your vessel you will feel invigorated with the anticipation of your sailing adventure. You are guaranteed fun, excitement, relaxation, exploration and an experience you will treasure forever and sunsets you will never forget.

CREWED CHARTERS

Do as much or as little as you like as your crew navigate around the Whitsundays for you. Pull up the sails, take the helm, or simply lie on the deck and enjoy the view while your personal crew sets course. Crewed charters are best for you if you still want to hire your own yacht or catamaran, but don't have the confidence to sail it alone. Simply hire a professional skipper and tell them where you want to go. And if you're keen, learn a little sailing for next time! If you want to meet new people from around the world, a package sailing holiday is perfect. You will sail to the top destinations for beachcombing, snorkelling, diving and that perfect sunset. If you want to cover a greater area of the Whitsundays and the sails seem a little cumbersome, a motor cruiser will be more your scene.

LEARN TO SAIL

If the sailing bug bites you, as it does many a visitor to the Whitsundays, there are sailing schools available from the Whitsunday Coast and Hamilton Island. Learn to sail amongst the 74 island wonders of the Whitsundays in a fully comprehensive sailing course designed to cater for every level of ability and experience. After just a few days of training and experience, you'll be competent in raising sails and charting a course around the Whitsundays, ready to head off on your next voyage of discovery.

BAREBOATING

The Whitsundays is the ultimate place in Australia to bareboating.

WHAT IS BAREBOATING?

Bareboating holidays provide a chance to experience the magic of the Whitsundays at your own pace. Bareboating means you hire and boat, sail or cruise the Whitsunday Islands at your leisure. You are the skipper of your own adventure, your family and friends are your crew! It's a truly distinct holiday experience that the Whitsundays specialises in – and a must do for anyone who has ever wanted to try their hand at sailing.

WHO CAN GO BAREBOATING?

Bareboating is easy – anyone can do it! The protected waters of the Whitsundays are recognised as amongst the safest in the world and perfect for the beginner sailor all the way up to experienced, professional sailors. Although some sailing experience is an advantage, no licence is required to charter a yacht, catamaran or motor cruiser and a comprehensive safety briefing will be provided to ensure you feel comfortable with the vessel. Alternatively, choose to take an experienced sail guide with you for as long as you like. All vessels come fully equipped with the essentials for extended cruising including showers, toilets, galleys (kitchens), dinghy for adventures onshore, safety and navigational equipment.

WHY SHOULD I #GOBAREBOATING?

The beauty of cruising around the Whitsundays and skippering yourself is that you choose where you go. Drop anchor in a secluded anchorage, explore deserted beaches and snorkel the many fringing reefs. Feel the freedom of chartering your own vessel and be the captain of your own adventure.

DID YOU KNOW?

The Whitsundays is home to the Southern Hemisphere's largest fleet of skipper yourself and chartered vessels, offering a unique opportunity to combine your accommodation with your sightseeing and sleep out in the calm and protected waters of the Whitsundays.



Bareboating

Bareboating



BAREBOAT SAILING SUGGESTED ITINERARY

Suggested Sailing Itinerary

Day 1

- ◆ Pick up your bareboat and do a 4 hour sailing induction with a qualified skipper before setting sail on your adventure.
- ◆ Find a protected bay (perhaps Nara Inlet, Hook Island) to anchor for the afternoon.
- ◆ Watch the sunset, then eat dinner under a million stars and spend the night on-board.

Day 2

- ◆ Wake up in paradise!
- ◆ Sail to spectacular fringing coral reefs for snorkelling on Hayman and Hook Island, then lunch on a deserted sand cay.

Day 3

- ◆ Sail south to world famous Whitehaven Beach, where you might jump on land and do a bushwalk to the stunning Hill Inlet lookout, or just laze on the beach.

Day 4

- ◆ Kayak to Chalkie's Beach, snorkel and explore surrounding coves then spend the afternoon fishing as you cruise to find your next protected cove to spend the night. Fresh fish for dinner anyone?

Day 5

- ◆ Maybe you'll drop into an island resort today for lunch... or maybe you'll just keep exploring fringing coral reef or bushwalks on deserted islands and sunbathing on the top deck!

Day 6

- ◆ Sail the boat back and return to dry land, where you'll want to tell the landlubbers all about your adventures on the Coral Sea.



INSTAGRAMMABLE ROADTRIPS FROM AIRLIE BEACH

IN THE HEART OF THE WHITSUNDAYS, AIRLIE BEACH IS THE GATEWAY TO ALL THE FUN AND ADVENTURE OF THE WHITSUNDAYS REGION. FOR THOSE WANTING TO JUMP IN THE CAR AND EXPLORE THE MAINLAND, THERE ARE PLENTY OF AMAZING LOCATIONS ALONG THE WHITSUNDAY COAST AND HINTERLAND TO GET THAT PERFECT PHOTO TO MAKE YOUR FRIENDS GREEN WITH ENVY...

AIRLIE BEACH TO SHUTE HARBOUR – 15 MINUTES

Visit this beautiful natural harbour, surrounded by Conway National Park, to see incredible views overlooking the Whitsunday Passage and Islands. Stop in at the Shute Harbour lookout, turning off the main road before you reach the marina at the end.

AIRLIE BEACH TO CEDAR CREEK FALLS – 25 MINUTES

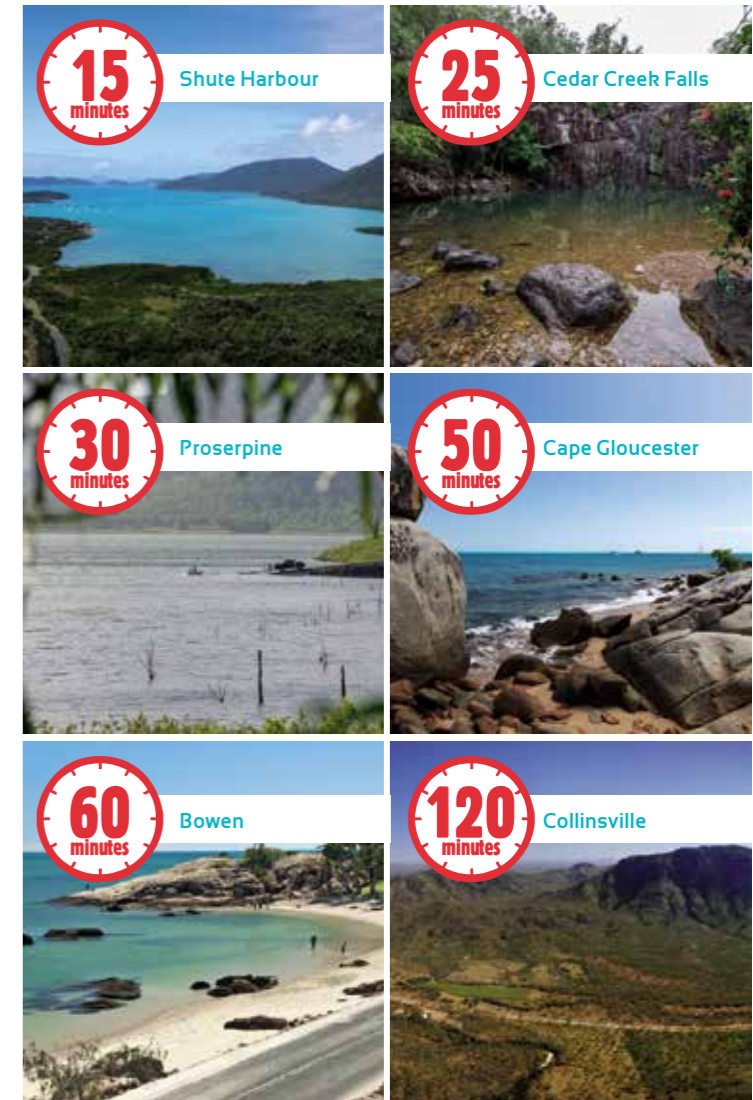
The lush Cedar Creek waterhole and its seasonal waterfall are a local secret, and a favourite spot for visitors to relax and cool off surrounded by tropical forest and Ulysses butterflies. Visit just after rainfall to see the Falls at their best.

AIRLIE BEACH TO PROSERPINE – 30 MINUTES

Heading west from Airlie Beach, meander through the canefields of Proserpine to the art deco main street with its boutique shopping and traditional country town hospitality. Or if catching a whopping one metre barramundi is your goal, throw in a line at Peter Faust Dam, just twenty minutes further west from Proserpine.

AIRLIE BEACH TO CAPE GLOUCESTER – 50 MINUTES

Drive north through the hills surrounding Airlie Beach towards Cape Gloucester, a favourite spot with locals for a swim at the sandy beach, or to have a long leisurely lunch at one of the two beach resorts overlooking the stunning Gloucester Island National Park.



AIRLIE BEACH TO BOWEN – 60 MINUTES

Head north along the Bruce Highway and escape to Bowen's award-winning beaches, just seven minutes from the centre of town. To get amazing 360 degree views of the town and islands off the coast, stop into Flagstaff Hill Lookout where you will feel on top of the world.

AIRLIE BEACH TO COLLINSVILLE – 120 MINUTES

Experience the historic mining town of Collinsville by driving to Bowen and then heading west at the well-signed turnoff along the Bruce Highway. With boutique shopping in the main street, one of the driest golf courses in Australia, and the acclaimed Coalface Experience Museum and Pit Pony Experience, it is well worth going off the beaten track to explore the Collinsville area.

SNORKEL AND DIVE

If scuba diving is on the bucket list, then the Whitsundays is a paradise, home to tens of thousands of species of brilliantly coloured fish, coral and other marine life including whales, dolphins and turtles. Local companies are able to cater for every skill level from novice to dive master. Dive at popular sites including Blue Pearl Bay on the north-western side of Hayman Island, and Butterfly Bay and Manta Ray Bay on Hook Island. Dive at one of the world's top dive sites in the north of the Whitsundays, the historic SS *Yongala* wreck, and experience giant Queensland gropers, giant marble rays, schooling barracuda, sea snakes, turtles and much more.

If snorkelling is more your style, then the warm shallow waters of the Whitsundays provide some of the most colourful fish and coral formations anywhere in the Great Barrier Reef Marine Park. Or stay dry, and enjoy the reef views from an underwater viewing chamber, glass bottom boat and coral semi-submersible. Some top snorkelling spots include the Pinnacles at Hook Island, Bait Reef and Henry's Bommie at Fairey Reef.



Aerial – Great Barrier Reef



FROM UP ABOVE

The Whitsunday Islands are the largest group of offshore islands in Australia and the region's sparkling azure seas are dotted with an array of national park islands, coral cays, fringing coral reefs and stunning beaches.

The Whitsundays is a world of tropical wonder. The vibrant colours of the magnificent Great Barrier Reef and tropical rainforest provide plenty of scope for activity and adventure. This is the destination for amazing experiences, such as the exhilaration of soaring over one of the world's most stunning natural attractions, the Great Barrier Reef.

Experience this for yourself with a scenic flight over the

romantic natural formation of Heart Reef on the Great Barrier Reef. Pair this with a flight over Whitehaven Beach and the spectacular Hill Inlet and go home with your very own set of postcard-quality photographs.

You can add in a scenic flight as an addition to another activity, or if pressed for time, see the highlights of the Whitsundays in just a few hours from the windows of a seaplane, light aircraft or helicopter.

For those wanting even more action and adventure, you can skydive over Airlie Beach and the Whitsunday Islands and enjoy the views from a unique perspective!

SHOPPING

TOP TIPS:

- ◆ Airlie Beach Main Street offers an array of clothing stores and retail outlets including souvenir shops. This includes the Port of Airlie, which provides a selection of retail outlets including a café, cellar, restaurants, swimwear and fashion outlets. The town's main street has been upgraded and has a fresh look and feel. Larger shopping centres, retailers and wholesalers can be found in nearby Cannonvale.
- ◆ The selection of speciality stores and boutiques in Proserpine attract visitors from the surrounding towns

and regions. Proserpine is also home to some large retailers which service not only Proserpine but the entire region.

- ◆ The Bowen town centre is full of unique retailers and many large scale suppliers for this beautiful coastal community.
- ◆ Collinsville also boasts some unique retailers along the main street and features a shopping centre and manufacturers and retailers which cater to the region's mining sector.
- ◆ On the Whitsunday Islands, the resorts have an array of boutiques and merchandise stores popular with tourists and locals.

GOLF

BOWEN GOLF CLUB

Bowen Golf Club was established in 1928 and over the years has earned the reputation of being a 'hidden golfing gem', nestled along the Whitsunday coast waiting to be discovered by golfing enthusiasts and visitors alike. Bowen is renowned as a very friendly club and the clubhouse facilities provide the ideal surroundings for the relaxation and enjoyment of members and guests.

Bowen Golf Course is a fantastic 9 hole, 18 tee, links style seaside course that is both rewarding and challenging to golfers of all levels. The reward is just walking around this beautiful course, while the challenges come with Mother Nature and the strong winds she provides to this area.

The 18 tees have been located giving a totally different approach to the previously played 1-9 creating a truly challenging 18 holes of golf.

DID YOU KNOW?

The Hamilton Island Golf Club is the only Australian 18 hole championship course on its own island!

DENT ISLAND – HAMILTON ISLAND GOLF CLUB

Said to be one of the most challenging golf courses in the world, the 18 hole par 71 Hamilton Island Golf Course takes advantage of the steep ridges and valleys of Dent Island. With strong winds, thick bushland and the punishing 'Valley of Death' on the 14th hole, the course is a fun challenge for novice and professional golfers alike. Catering for all experience levels, and with spectacular views of the surrounding Whitsunday Islands, this course is a must-do for any keen golfer!

The contemporary clubhouse is the perfect spot to relax and enjoy a meal after your unforgettable golfing experience. All green fees for the Hamilton Island Golf Club include your golfing game, a GPS-fitted golf buggy, and return Hamilton Island launch transfers.

PROSERPINE GOLF CLUB

The Proserpine Golf Club is the only 18 hole golf course on the mainland in the Whitsundays. Situated only 25km from downtown Airlie Beach, the course features a picturesque waterway, friendly atmosphere, challenging par 3's, not to mention the birdlife and is nestled amongst the canefields. If you are new to the area or visiting, drop in for a relaxing day on the course.



Images clockwise from top left: Reef Fishing, Bowen Golf Course, Fishing in Peter Faust Dam, Sunset Fishing, View from the clubhouse, Beach Fishing In Horseshoe Bay, Hamilton Island Golf Course, Father and son fishing

Golf on Dent Island, Whitsundays



FISHING

THE WHITSUNDAYS HAS SOME OF THE BEST FISHING IN QUEENSLAND. CHARTER VESSELS OPERATING OUT OF SHUTE HARBOUR, AIRLIE BEACH AND HAMILTON ISLAND OFFER A VARIETY OF TRIPS TO THE RICH WATERS OF THE OUTER GREAT BARRIER REEF CHASING TUNA, MACKEREL AND CORAL TROUT, OR TAGGING AND RELEASING SAILFISH AND THE LEGENDARY BLACK MARLIN.

Species of fish in the waters of the Whitsundays include: seven species of cod, six species of mackerel, five species of tuna, seven species of coral trout, eleven species of trevally, four species of emperor, blue and black marlin, bass and bream, sailfish, wahoo, dolphin fish, queenfish, barramundi, cobia, mangrove jack, jewfish, kingfish, chinaman, golden snapper... the list goes on! If it's pelagic and lives in tropical waters, you can catch it fishing in the Whitsundays!

Nearly all of the Whitsunday islands are accessible by boat with camping available across some of the islands and coastline. Shore based fishing is available along the Whitsunday Coast and from the many marina rockwalls located around the towns. Bowen is popular for its Bowen Family Fishing Classic and Wet Weekend, the biggest family fishing competition in the country, running for over 20 years.

The region's rivers and creeks provide estuary fishing and dams feature some of the best barramundi fishing in Queensland. Upstream from Proserpine is Lake Proserpine, or as it is better known, Peter Faust Dam, an ideal spot for water sports and freshwater fishing and home to the elusive barramundi.

BOAT RAMPS

- ◆ Abell Point Marina, Cannonvale
- ◆ VMR – Altmann Avenue, Cannonvale
- ◆ Shute Harbour
- ◆ Port of Airlie, Airlie Beach
- ◆ Proserpine River – Conway Road
- ◆ Horseshoe Bay Road, Bowen
- ◆ Bowen Marina
- ◆ Yasso Point
- ◆ Proserpine Dam
- ◆ Barker Park, Bowen
- ◆ Wilsons Beach
- ◆ Midgeton Beach
- ◆ Whitsunday Sailing Club
- ◆ Dingo Beach
- ◆ Cape Gloucester
- ◆ Laguna Quays Marina

74 THINGS TO DO IN THE WHITSUNDAYS

WHITSUNDAY ISLANDS

1. Sail around the 74 Islands of the Whitsundays – either by bareboat (skipper yourself) or enjoy one of the many crewed charter options
2. Cruise to the Great Barrier Reef and be amazed by the brilliant corals and thousands of fish
3. Let your toes sink into the fine white silica sands of world-famous Whitehaven Beach
4. Spend a memorable night on the reef and under the stars with 'Reefsleep'
5. Learn to scuba dive on some of the best reefs in the world, such as the Stepping Stones and the Cathedrals
6. Snorkel with 1500 species of fish and 400 types of coral, and spot turtles, dolphins and stingray
7. Soar over Heart Reef by seaplane or helicopter to view this amazing natural formation
8. Hike to the lookout at Hill Inlet for stunning views of Whitsunday Island and Whitehaven Beach
9. View marine life at the world's biggest open air aquarium on Daydream Island, the Living Reef
10. Catch a seaplane or helicopter to a private beach for a picnic to remember
11. Go whale watching between June and September and see these amazing creatures in the wild
12. Hike on one of the many walking tracks on the islands – the great views are worth it!
13. Explore Hamilton Island in a golf buggy
14. Splash out and have a romantic and luxurious weekend on Hayman Island
15. For the adrenalin junkies, explore the islands on a Whitsunday Jet Ski or Ocean Rafting tour
16. Play mini golf on Daydream Island
17. Have a scenic round of golf on Dent Island, a champion grade course covering an entire island
18. Experience the romance of sailing on a tallship and explore the islands on-board *Derwent Hunter*
19. Eat breakfast surrounded by koalas in the trees at WILD LIFE, Hamilton Island
20. Enjoy the serenity and sunsets from your hammock at secluded Palm Bay Resort on Long Island
21. Pack a tent and be dropped off at a secluded island for a weekend of camping (camping permits from the Department of NPRSR required and are around \$5 a night)

22. Follow in the footsteps of the Whitsundays traditional owners on the Ngaro Sea Trail
23. Visit the historic Aboriginal caves at Nara Inlet
24. Hire a kayak and experience the islands from a different perspective
25. Throw in a line and catch your dinner (but check the Department of Fisheries fishing zones first!)

AIRLIE BEACH

26. Discover the diversity of local wildlife and flora on the Whitsundays Great Walk
27. Take a Segway tour for a unique way to see Airlie Beach or Conway National Park
28. Depart from the centre of Airlie Beach on the short 'Airlie Creek Walking Track' and cool off in the rock pools at the top of the track
29. Enjoy great food and wine on the Airlie Beach Esplanade
30. Soak up the sun, splash about and make new friends at Airlie Beach Lagoon
31. Go shopping at the weekend markets or peruse the local boutiques
32. Get fit and take in the views on the coastal boardwalk from Airlie Beach to Cannonvale Beach
33. Get pampered and relax at a day spa
34. Go fishing at many of the great spots off the mainland, or at the Shute Harbour fishing pontoon
35. Sit on the beach and enjoy regular live music every weekend
36. Have a BBQ at one of the beaches – Shingley Beach has great views of the marina
37. Sink your toes into the sand at Boathaven Beach
38. Play trivia at one of the pubs or resorts throughout the week
39. Try Stand Up Paddle (SUP) Boarding at Shingley Beach
40. Explore Pioneer Bay by jet ski
41. Allow yourself to dream while viewing the superyachts moored at the marinas
42. Compete in the weekly Wednesday Twilight sailing (from Whitsunday Sailing Club) – volunteer crew welcome
43. Experience the friendly vibrant nightlife in Airlie Beach!

PROSERPINE

44. Catch a monster barramundi at Peter Faust Dam (permit required)
45. Enjoy some country hospitality at a local pub
46. Watch the night sky light up during the pre-harvest cane fires



Images clockwise from top left: Bareboating, Bowen River Rodeo, ReefWorld, Snorkelling, Reef Fishing, Camel rides at Airlie beach markets, Crocodile spotting on Proserpine River, Stand-up-paddle-boarding.

47. Visit the Whitsunday Gold Coffee plantation and coffee shop
48. Spot an estuarine crocodile on the Proserpine River and take the tour to see them up close!
49. Take a step back in time at the Proserpine Historical Museum
50. Play golf at the Proserpine Golf Club
51. Search for the elusive Proserpine rock wallaby
52. Browse the many boutique clothing and homeware stores
53. Get tips from the locals at Whitsunday Region
54. Visit the Sunday morning markets once a month

HYDEAWAY BAY / DINGO BEACH / CONWAY BEACH

55. Enjoy the tranquil scenery of Dingo Beach while sun baking or beachcombing
56. Overlook the beautiful Whitsunday Islands while enjoying a picnic lunch
57. Go deep sea fishing around Gloucester Island
58. During the summer months see if you can spot turtles hatching along many of the beaches!
59. Enjoy a seafood lunch at Cape Gloucester while overlooking Gloucester Island
60. Fly a kite at Conway Beach
61. Splash around and enjoy a scenic picnic at the seasonal Cedar Creek Falls

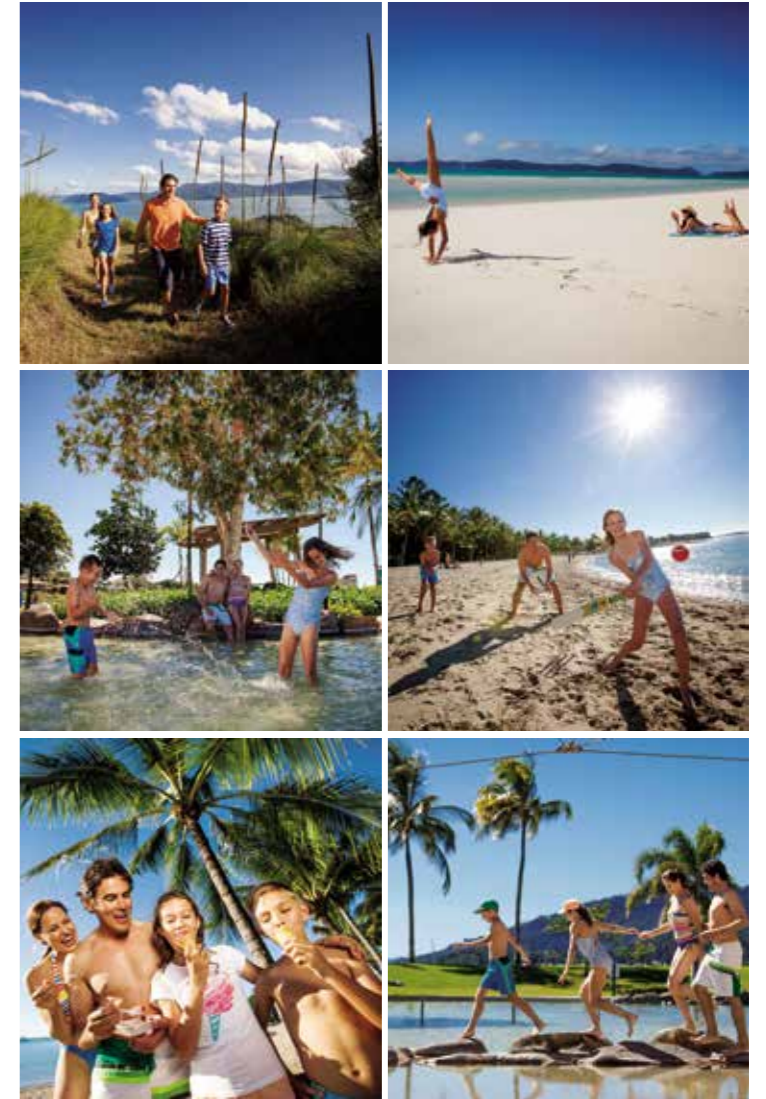
BOWEN / COLLINSVILLE

62. In the summery winter season, head to Mount Danger, 15 minutes from Bowen for strawberry picking!
63. Walk or laze about the beautiful beaches of Bowen
64. Taste the tropical delights of a Bowen mango
65. Explore the pristine fringing reefs off Horseshoe Bay
66. Play a round of golf in the sea breeze at Bowen Golf Club
67. Relax on the Front Beach foreshore complete with play equipment, BBQs and picnic areas
68. Head inland to the old mining area of Collinsville and the Coalface Experience museum
69. Take in the full panorama of Bowen, the islands and countryside from Flagstaff Hill
70. Be amazed by the live fish display at Bowen Harbour with fish ready for export
71. Visit Muller's Lagoon, 23 hectares of picturesque parkland in the centre of town, with superb botanical gardens and wetlands habitat
72. Visit the sites where the movie 'Australia' was filmed
73. Enjoy a movie at the art deco Bowen Summer Gardens Cinema
74. Take in the great views at Flagstaff Hill with a cup of coffee at the café.

FAMILY TIME



Whitehaven Beach.



Inset images clockwise from left: South Molle Island; Whitehaven Beach; Airlie Beach Foreshore; Airlie Beach Lagoon; Airlie Beach Foreshore; Airlie Beach Lagoon.

FAMILY HOLIDAYS ARE A TIME TO SLOW DOWN, RECONNECT AND SPEND A FUN TIME WITH YOUR LOVED ONES. HERE IN THE WHITSUNDAYS, WE THRIVE IN FAMILY FUN! YOUR KIDS WILL BE WIDE-EYED WITH WONDER – WITH FUN PLACES TO STAY AND A HUGE RANGE OF THINGS TO DO. CHECK OUT OUR TOP 10 FUN FAMILY ACTIVITIES THAT WILL KEEP YOUR FAMILY BUSY AND ENTERTAINED, WHILE AT THE SAME TIME RELAXED AND HAPPY.

TOP 10 FAMILY ACTIVITIES:

1. Meet Pancake and Pikelet, the resident stingrays at Daydream Island’s Living Reef and give their baby stingrays a pet!
2. Visit the brand new Animal Park at BIG4 Adventure Whitsunday Resort and help feed the resident chickens, goats, ducks, piglets, lambs and calves every day!
3. Go croc spotting on the Proserpine River and learn more about the Goorganga wetlands with Whitsunday Crocodile Safari.
4. Swim, play or barbeque at the Airlie Beach Lagoon. The green parklands, playground and refreshing pool are the ideal hangout during the day.
5. Enjoy breakfast with the koalas at WILD LIFE Hamilton Island Park Cafe. Bacon, eggs and hash browns taste much better when eaten up close and personal to these furry Aussie friends!
6. Snorkel, swim and splash amidst thousands of colourful coral and fish at a day out on the Great Barrier Reef with Cruise Whitsundays.
7. Play beach games, mini tennis, feed the many fish or get the ultimate sweet fix at the famous Chocolate Room (yum!) at One&Only Hayman Island.
8. Slip down the waterslide at BIG4 Adventure Whitsunday Resort, hop on the giant jumping pillow or make new friends at the Kids Club. Make sure you check out the weekly activity guide when you plan your trip.
9. Feel the rush of Formula 1 go-cart action in Hamilton Island’s Palm Valley. Take the wheel on the exhilarating outdoor track, reaching speeds of up to 45 kilometres per hour.
10. Spot a whale with playful whales a common sight around the Whitsunday Island from June to October.

The Whitsundays is home to a number of picturesque parks and gardens, with great facilities for entertainment, exercise, relaxation and family fun. The much-loved Bicentennial Walkway links Cannonvale Beach with the Airlie Beach Lagoon, and is the perfect place for a stroll along the foreshore to admire the boats moored in the bays. The Whitsunday Botanic Garden is also located along the Bicentennial Walkway, and showcases the native marine vegetation environment, with over 1530 native local plants used in the design.

There are numerous swimming pools and parks throughout the region which are a great alternative for free family fun!

PICNIC SPOTS

PARK	FACILITIES
Airlie Beach	
Snows Beach (Shute Harbour)	Gazebo, Picnic setting, Barbeque, Public toilets located near jetty
Airlie Beach Foreshore	Picnic setting, Barbeque, Play equipment, Toilets (including disabled)
Airlie Beach Lagoon	Shaded picnic setting, Barbeque, Play equipment, Showers and toilets (including disabled)
Cannonvale	
Shingley Beach	Off street carparking, Barbeques, Toilets (including disabled), Picnic settings
Cannonvale Beach Foreshore & Bicentennial Park	Play equipment, Barbeques, Toilets (including disabled), Picnic settings
Proserpine	
Pioneer Park	Barbeques
Mill Street Park	Picnic settings
Entertainment Centre Park	Toilets (including disabled)
Rotary Park	Play equipment
John's Estate Park	Picnic settings
Rural Area	
Conway Beach	Play equipment
Wilsons Beach	Toilets
Dingo Beach	Picnic settings, Toilets
Bowen	
Muller's Lagoon	Play equipment, Barbeques, Picnic settings, Toilets
Foreshore	Play equipment, Barbeques, Picnic settings, 2 x Toilets
Hansen Park	Shelters, Barbeques, Play equipment, Picnic settings, Toilets
Case Park	Shelters, Barbeques, Play equipment, Picnic settings
Queens Beach Park	Surf Life Saving Club – includes Toilets, Play equipment, Barbeques, Picnic settings
Collinsville	
Lions Park	Shelter, Play equipment, Picnic settings, Toilets
Sonoma Park	Barbeques, Picnic settings
Scottville	
Scottville Park	Barbeques, Play equipment, Picnic settings, Shelters, Toilets

SWIMMING POOLS AND WATER PARKS

Location	Details	Operating Hours	Admission Fees
Airlie Beach Lagoon	<ul style="list-style-type: none"> Offers a sheltered children's wading pool Shallow 1.5 metre depth maximum children's pool Larger pool which has maximum depth of 2 metres Separate swimming lanes for fitness enthusiasts Security after hours First Aid trained staff 24-hour CCTV monitoring Easy-to-understand signage/rules using universal symbols Sensor-operated lighting on pathways that goes on and off at dusk/dawn 	Lifeguards from 9am – 7pm during winter and 8am – 9pm during summer, 7 days a week	Free
Bowen Water Park Playground Bowen Foreshore	<ul style="list-style-type: none"> Zero depth play area Soft play area Right on the waterfront Manually operated All ages 	9am to 5pm, 7 days a week	Free
Bowen Swimming Pool 7 Dalrymple Street, Bowen 07 4786 1230	<ul style="list-style-type: none"> 50m heated outdoor pool with shadecover and grandstand Heated outdoor toddler pool with shadecover Learn to swim classes – babies to adults Dedicated heated learn to swim pool Squad training Water aerobics Beautiful landscaped grounds for relaxation Catering for birthday parties available upon request Home of the Bowen Swimming Club 	<p>Summer: Mon – Fri 6am to 6pm; Sat & Sun 10am to 6pm</p> <p>Winter: Mon & Wed 6am to 10am and 3:30pm to 5:30pm; Tue & Thu 12pm to 4pm; Fri 6am to 10am</p> <p>Closed on Good Friday and Christmas Day</p>	Adults: \$4.00 Children, Spectators & Pensioners: \$2.50
Proserpine Swimming Pool Anzac Road, Proserpine 07 4945 5790	<ul style="list-style-type: none"> Olympic sized heated outdoor pool with shadecover and grandstand Heated outdoor toddler pool with shadecover Dedicated heated learn to swim pool with shadecover Learn to swim classes – babies to adults Squad training Triathlete training Swim set classes Water aerobics Beautiful landscaped grounds for relaxation Playground Giant water inflatables Home of the Whitsunday Swimming Club & the Whitsunday Warriors - Masters 	<p>Mon, Tue, Wed & Fri 6:00am to 7:00pm; Thu 6am to 5:30pm; Sat & Sun 9am to 5pm</p> <p>Closed on Good Friday and Christmas Day</p>	Adult casual: \$4.00 Child casual: \$2.50 Spectator: \$2.00
Collinsville Swimming Pool 38 Conway Street, Collinsville 07 4785 5440 Collinsville.pool@bigpond.com	<ul style="list-style-type: none"> 33m outdoor pool with shadecover Outdoor toddler pool with shadecover Learn to swim classes – babies to adults Squad training Shaded grounds for relaxation Home of the Collinsville & Scottville Amateur Swimming Club 	<p>Summer: Mon – Wed 6am to 7:30am and 11am to 6:30pm; Thurs & Fri 6am to 7:30am and 11:30am to 5:30pm; Sat, Sun & Public Holidays 10am to 5pm; Anzac Day 12pm to 5pm; Closed Good Friday, Christmas Day and Boxing Day</p>	Adult: \$4.00 Children: \$2.50 (children under 4 free) School students: \$2.00

HISTORY AND HERITAGE IN THE WHITSUNDAYS

THE NGARO

The Whitsundays has a long and rich cultural heritage, beginning with the ancient Ngaro Indigenous people who have lived in the Whitsundays region for over 8,000 years. The original inhabitants of the Whitsundays, the Ngaro moved seasonally throughout the islands in search of food and had no permanent settlements. The Ngaro were keen fisherpeople, making the most of the abundance of fish and other marine animals around the islands. They used spears and fashioned simple bark canoes 2–3 metres long, often made from a single piece of bark.

To truly experience this ancient tradition and view some of the cultural remains including rock art, visitors can hike to the Ngaro Cultural Site at Nara Inlet on Hook Island. Another site of significance to the Ngaro is Hill Inlet on Whitsunday Island, and to this day the upper reaches of the inlet are considered a sacred site and a permit is required for access.

WHITSUNDAY NGARO SEA TRAIL

One of the best ways to experience this cultural tradition is to follow the Whitsunday Ngaro Sea Trail across the islands and visit the Ngaro Cultural Site at Nara Inlet on Hook Island. The Ngaro Sea Trail was created by the Queensland Parks and Wildlife Service and integrates some exciting tracks on Whitsunday Island with established walks on South Molle Island and the track to the Ngaro Cultural Site on Hook Island.

Travel from sea to summit with varying grades of difficulty and follow in the footsteps of the original inhabitants of the area. Walks range from as little as 170 metres one way, to 7 km hikes across an entire island. The largely self-guided Sea Trail is dotted with campsites and vantage points, and is accessible by boat or kayak.

NGARO CULTURAL SITE

The track begins deep inside Nara Inlet on Hook Island – an excellent overnight anchorage. Short and initially steep, the stepped track leads up the side of the inlet to a viewing platform at the cave’s entrance. Protected from the elements in a once-hidden cave, Ngaro artwork adorns the fragile rock surface. Allow at least an hour to immerse yourself in the cultural stories of the site, and to experience the ancient tradition of the Ngaro people.



Images clockwise from top left: Cape Gloucester, Ngaro Sea Trail, Bowen, Mural in Bowen, Daydream Island Sunset, Napa Gallery – Airlie Beach, Proserpine Museum, Flagstaff Hill, Hamilton Island, South Molle Island, Visitor Information Centre Bowen, Islands Aerial, Cape Gloucester.



Looking down on Nara Inlet, Hook Island

CAPTAIN COOK

In 1770, Europeans sailed through the Whitsunday Passage between the islands and the mainland for the first time. Captain James Cook was sailing the east coast of Australia in his ship the *Endeavour* on Sunday 3 June, and named the area 'Whit Sunday' in reference to a Christian holiday on the religious calendar. Cook noted during this journey 'Everywhere good anchorages... Indeed the whole passage is one continued safe harbour.'

Since these early days, agriculture and mining have flourished in the region and the history of these communities can be explored at the Historical Proserpine Museum.

THEATRES, ART GALLERIES AND MUSEUMS

The long established history of the Whitsundays remains preserved in its heritage buildings, monuments and museums. Across the region there is plenty of entertainment to suit all tastes with a cinema, cultural events, art galleries, concerts and local festivals throughout the year.

- ◆ Summer Garden Theatre in Bowen
- ◆ Ashman's Historic Machinery, Bowen
- ◆ Airlie Beach Main Street Art Gallery
- ◆ Proserpine Entertainment Centre providing movies and live shows
- ◆ Bowen Flagstaff Hill Interpretive Centre
- ◆ Proserpine Historical Museum
- ◆ The Coalface Experience in Collinsville
- ◆ Catalina Museum, Bowen
- ◆ Historic murals in the townships of Bowen and Collinsville.

LOCAL FLAVOURS



Group on Airlie Beach

LOCAL FLAVOURS



INDULGING IN DELECTABLE FOOD AND WINE IN GORGEOUS SURROUNDS IS A BIG PART OF THE WHITSUNDAYS EXPERIENCE. LOCAL SEAFOOD AND FRESH REGIONAL PRODUCE FEATURE ON MOST MENUS AND AS YOU'D EXPECT IN THE TROPICS, THE ACCENT IS ON DELICATE FLAVOURS, SIMPLY PREPARED. THE WHITSUNDAYS HAS A WIDE SELECTION OF RESTAURANTS CATERING TO EVERY TASTE - FROM FRESH LOCAL SEAFOOD TO MEXICAN, ITALIAN, ASIAN, EUROPEAN OR MODERN AUSTRALIAN.

Dining at any of the popular island or coast resorts and restaurants is an experience you won't forget. All of the Whitsunday island resorts have different dining experiences, from five star total indulgences to master class-style learning experiences to fully inclusive buffet meals.

In Airlie Beach there's a vast array of cuisines from five star restaurants to fish and chips on the beach. Many restaurants in Airlie Beach also feature wine bars and beer cafes, live music and entertainment to keep you partying all night.

Proserpine is more laid back, with cafe and pub style meals matched with country hospitality to provide a great night out. Bowen also has a good range of restaurants and pubs. Not to be missed are the spectacular views from the cafe atop Flagstaff Hill in Bowen.

NIGHTLIFE

Airlie Beach is the hub of the region's nightlife, with a large range of backpacker bars, pubs, clubs and bars to share stories and a cold tropical cocktail on any night of the week. Live bands and local talent are a regular feature, as well as trivia nights and other fun competitions. Start at a restaurant's wine bar, and move onto a backpackers bar, Irish pub or dance the night away in the late night clubs.

TASTE THE WHITSUNDAYS

Surrounded by lush agriculture land, with fields of sugar cane, tomatoes, mangoes, coffee, and the like, the Whitsundays region boasts of fresh, local produce.

Due to its mild climate it is the largest winter growing vegetable region in Australia with local fruit and vegetables at your fingertips all throughout the year. With markets, retailers and restaurants in the region all taking advantage of the fresh supplies, you can taste the Whitsundays. Visit the Saturday morning markets at the esplanade in Airlie Beach or head to the fortnightly Farmers Markets in Proserpine.

For freshly caught seafood, head to Bowen's marina situated 80km north of Airlie Beach where boats regularly arrive full of fresh stocks of live caught seafood. You will love the fresh fish which you can buy from their sea-side shops.

To taste your way through the Whitsundays take a Food Trail tour to visit our local farms, taste test and indulge in the local produce over dinner, pick strawberries from the strawberry farm near Bowen or enjoy an espresso martini from locally produced Mr Bean Cold Brew Coffee.

Local seafood restaurant Fish D'Vine hosts a series of cooking classes with local Foodie Junkie, Bec Clark, who teaches tips, tastings and training to get those taste buds tingling! Visit the events calendar at www.tourismwhitsundays.com.au for more information.

MARKETS

Town	Where	When
Airlie Beach	Airlie Foreshore	Every Saturday 7am – 1pm
Proserpine (Farmers Market)	Whitsunday Coffee Plantation	6am – 12 noon (1st and 3rd Sunday of each month)
Bowen (Lions Market)	Hansen Park	8am – 12 noon Every Sunday
Queens Beach Market	Queens Beach Esplanade	1st, 3rd and 5th Sunday of each month (March – December)
Collinsville	Town Hall parking lot	10am – 1pm Every Sunday

WEDDINGS



Whitehaven Beach



Inset images clockwise from top left: Earlando; Whitehaven Beach; Villa Botanica; Coral Sea Resort; Whitsunday Hinterland; Whitsunday Pavillion.

IT'S EASY TO SEE WHY THE WHITSUNDAYS IS KNOWN AS THE WEDDING HEART OF AUSTRALIA...

The Whitsundays is the perfect place for your romantic escape. With idyllic warm weather and beautiful sunshine throughout the year, the Whitsundays is well-known for its uncrowded tropical beaches and the many experiences that create the ultimate romantic escape.

Take a scenic flight over the Great Barrier Reef and Heart Reef, picnic on Whitehaven Beach and dip your toes into the sparkling white sand, or cast your eyes over the endless blue horizons while soaking up the sun on a luxurious yacht.

Imagine romantic sunsets overlooking the Coral Sea and islands, secluded beaches to escape to and colourful corals to

snorkel on; just the two of you. Indulge at a luxury day spa, and at night savour fresh local seafood and gaze at starry skies.

With an abundance of wedding venues and locations, catering for events of all sizes, the Whitsundays makes it easy to plan your wedding from afar. In the Whitsundays, expert wedding suppliers are on hand with years of experience in every detail of your perfect day.

PLAN YOUR WHITSUNDAY WEDDING

Visit tourismwhitsundays.com.au/weddings to find out the best wedding professionals in the Whitsundays, plus a huge selection of real wedding inspiration and a detailed planning guide with everything you need to know about getting married in the wedding heart of Australia.

CEREMONY LOCATIONS IN THE WHITSUNDAYS

Beaches in and around Airlie Beach

- ◆ Airlie Beach, Boathaven Beach, Shingley Beach, Cannonvale Beach, Shute Harbour Beach

Beautiful bush ceremony location near Airlie Beach

- ◆ Cedar Creek Falls, Conway National Park

Beaches about an hour's drive north of Airlie Beach

- ◆ Gloucester Point, Hydeaway Bay, Dingo Beach

Beaches in and around the mainland town of Bowen

- ◆ Coral Cove, Rose Bay, Murray Bay, Horseshoe Bay, Bowen Beach, Flagstaff Hill

Island Locations

- ◆ Whitehaven Beach (Whitsunday Island)
- ◆ Lovers' Cove, Endeavour Wedding Chapel and Mermaid Beach (Daydream Island)
- ◆ Catseye Beach, One Tree Hill and Chapel and Gardens (Hamilton Island)
- ◆ Stella Maris Chapel, Coconut Grove, Hayman Beach, The Formal Garden, Lagoon Lanai, Resort Lookout or the Eastern Lawn (Hayman Island)
- ◆ Palm Bay Resort (Long Island).

DID YOU KNOW?

You can also have your wedding ceremony on-board one of the many sail or motor vessels available throughout the Whitsundays.

PET FRIENDLY AND ACCESSIBLE OPTIONS



Bicentennial Boardwalk, Airlie Beach

PET FRIENDLY AND ACCESSIBLE OPTIONS



Inset images clockwise from top left: Port of Airlie; Abell Point Marina South; Airlie Beach Bicentennial Boardwalk; Dog-friendly Cannonvale Beach.

WANT TO BRING YOUR FUR-BABY ALONG ON HOLIDAYS? OR IS YOUR TRUSTY COMPANION ON THE ROAD LOOKING FOR SOMEWHERE TO STOP AND STRETCH THEIR PAWS? THE WHITSUNDAYS HAS PLENTY OF OPTIONS FOR PLACES TO STAY AND PLAY WITH YOUR PET.

PET FRIENDLY ACCOMMODATION

- ◆ Rose Bay Resort
- ◆ Whitsunday Rainforest Retreat when booking a whole villa
- ◆ Seabreeze Tourist Park
- ◆ Airlie Cove Resort and Van Park

PET FRIENDLY CAFES AND PRECINCTS

- ◆ Le Sorelle Coffee House – on the front patio
- ◆ Fat Frog Beach Café
- ◆ Abell Point Marina

PET OFF-LEAD AREAS IN THE WHITSUNDAYS

Bowen

- ◆ Northern end of Kings Beach – enter at end of Rose Bay Road
- ◆ Southern end of Queens Beach
- ◆ Front Beach from the jetty heading south to Doughty Creek Mouth
- ◆ The mud flats from Doughty Creek Mouth heading south to just past the Big Mango
- ◆ Denison Park on Hay Street

Cannonvale

- ◆ Far end of Cannonvale Beach off Coral Esplanade
- ◆ Dog park area between Coral Esplanade and Shute Harbour Road

Jubilee Pocket

- ◆ Park between Jubilee Pocket Road and Sunbird Close

Proserpine

- ◆ Park on Renwick Street.

PET ON-LEAD AREAS IN THE WHITSUNDAYS

Airlie Beach

- ◆ Airlie Beach to Cannonvale foreshore walk (Bicentennial Walk)
- ◆ Boathaven Beach

Bowen

- ◆ Hansen Park to Horseshoe Bay Walk
- ◆ Muller's Lagoon to Queens Beach
- ◆ Cape Edgecumbe Walking Trail

Cedar Creek Falls

Conway Beach

Dingo Beach

Hydeaway Bay

Peter Faust Dam, Proserpine

Shute Harbour

ACCESSIBILITY IN THE WHITSUNDAYS

The Whitsundays wants all visitors to feel welcome and comfortable in the region, and many accommodation providers and precincts provide wheelchair accessibility.

ACCESSIBLE ACCOMMODATION

- ◆ Airlie Beach Hotel
- ◆ Airlie Beach Motor Lodge
- ◆ BIG4 Adventure Whitsunday Resort
- ◆ Coral Sea Resort
- ◆ Daydream Island Resort and Spa
- ◆ Hamilton Island
- ◆ Heart Hotel and Gallery Whitsundays
- ◆ Mirage Whitsundays
- ◆ One&Only Hayman Island
- ◆ Queensland Rail
- ◆ Sea Star Apartments
- ◆ Shingley Beach Resort

ACCESSIBLE CAFES AND PRECINCTS

- ◆ Abell Point Marina
- ◆ Airlie Beach town centre
- ◆ Fish D'Vine
- ◆ Le Sorelle Coffee House
- ◆ Port of Airlie.

AIRLIE BEACH FESTIVAL OF MUSIC

4 Days 74 Bands in venues across Airlie Beach

Tim Finn, The Ramones, Troy Cassar-Daley, Daryl Braithwaite, Sandi Thom and Russell Morris PLUS 68 other great bands. Great Music – Great Atmosphere – Book Now.

- 4 Day Ticket \$245
 - 1 Day Ticket \$120
- 3–6 November 2016



1/2579 Shute Harbour Road, Jubilee Pocket QLD 4802
P: 0427 029 041 E: info@airliebeachfestivalofmusic.com.au
www.airliebeachfestivalofmusic.com.au

AIRLIE BEACH RUNNING FESTIVAL – JULY

Run the scenic coastline of Airlie Beach and surrounds. Escape winter and bring the family.

- 2km Kids Fun Run
- Half Marathon – 10km
- 5km Fun Run and Business Team Challenge



Broadwater Avenue, Airlie Beach Lagoon (start/finish of event)
P: 0418 768 493 E: info@runairlie.com.au
www.runairlie.com.au

WHITSUNDAY ISLAND CAMPING CONNECTION

Camp and Explore Whitehaven Beach or choose from many deserted Island locations, enjoy snorkelling, stunning beaches, kayaking and bushwalks. Our specialised vessel SCAMPER provides transfers to campsites, campfires, water, snorkel gear. Camp permits are easily obtained.



Fb: Whitsunday Island Camping Connection
P: 07 4946 6285 E: scamper@whitsunday.net.au
www.whitsundaycamping.com.au

AIR WHITSUNDAY



Air Whitsunday is the largest seaplane operator in the southern hemisphere. They have been proudly providing an unsurpassed tour and transport service in the Whitsundays for over 40 years. Their tours showcase a panoramic perspective of the Great Barrier Reef Marine Park including the iconic Heart Reef; a pristine private snorkelling location amidst the coral suspended Hardy Lagoon; and ambient stops at the stunning Whitehaven Beach in the Whitsunday Islands National Park. A dedicated transfer service also enables visitors and locals alike to connect quickly and conveniently between the mainland and a number of the Whitsunday Islands.



Terminal One, Whitsunday Airport, Flametree QLD 4802
P: 07 4946 9111
E: fly@airwhitsunday.com.au
www.airwhitsunday.com.au

GSL AVIATION

Experience the Great Barrier Reef and Whitsunday Islands from above with GSL Aviation. Voted Airlie Beach's #1 scenic flight! GSL Aviation offer a range of scenic flights, package tours, and Hamilton Island transfers. Each flight includes a guaranteed window seat, and complimentary bus transfers.



Whitsunday Airport, Shute Harbour Road, Flametree QLD 4802
P: 1300 475 247 E: info@gslaviation.com.au
www.gslaviation.com.au

HAMILTON ISLAND AIR

Hamilton Island Air offers guests an exciting and unique way to experience the beauty of the Whitsundays, including the islands, the Great Barrier Reef and Whitehaven Beach by helicopter or seaplane. See it from above.



Great Barrier Reef Airport, Hamilton Island QLD 4803
P: 07 4969 9599 E: fly@hamiltonislandair.com
www.hamiltonislandair.com

ABELL POINT MARINA

Stay, Play and Explore the Whitsundays from the revitalised Abell Point Marina

Day and overnight tours, restaurants, bars, music and regular events are yours to experience daily at the Whitsundays' most vibrant marina precinct.



Shingley Drive, Airlie Beach QLD 4802
P: +61 7 4946 2400 E: info@abellpointmarina.com
www.abellpointmarina.com.au

NAPA GALLERY

- Art, gifts and souvenirs.
- Indigenous art – fully certified – not sold on frame for easy transportation
- Delicate hand painted silk scarves, unique jewellery, handmade soap and candles, leather goods, timber carvings, glass fusion works
- Open 10am-6pm weekdays & 9am-3pm weekends
- Conveniently located opposite Fish D'vine



2/402 Shute Harbour Road, Airlie Beach QLD 4802
P: 0419 400 010 E: sharonmcsweeny@yahoo.com.au
www.facebook.com/napagalleryairliebeach

WHITSUNDAY SEGWAY TOURS

Explore the Whitsundays riding a Segway!

Two amazing tours to choose from; Morning Segway rainforest discovery tour in the national park; Segway sunset and tapas boardwalk tour around Airlie Beach.



Airlie Beach QLD 4802
P: 0432 734 929 E: fun@whitsundaysegwaytours.com.au
www.whitsundaysegwaytours.com.au

WHITSUNDAY CROCODILE SAFARI

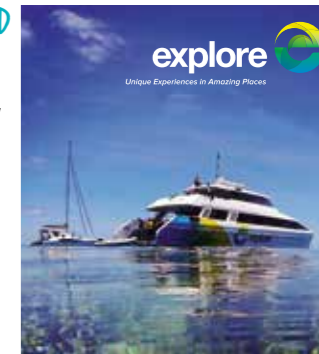
See crocodiles in the wild in the Whitsundays. Expert guides take you on a nature daytrip into local wetlands and estuaries to experience native Australian wildlife. Calm water cruise on Prosperpine River, a wagon-train tour exploring freshwater wetlands, BBQ lunch, billy tea and damper and transfers are all included.



PO Box 568, Airlie Beach QLD 4802
P: 07 4948 3310 E: info@crocodilesafari.com.au
www.crocodilesafari.com.au

EXPLORE HAMILTON ISLAND

Discover the Great Barrier Reef scuba diving and snorkelling, sail to Whitehaven Beach, cruise, dine and unwind amongst the beauty of the Whitsundays with Explore Hamilton Island's boutique cruises. Unique experiences in amazing places.



Shop 11, Front Street, Hamilton Island QLD 4803
P: 07 4946 9664 E: hamilton@exploregroup.com.au
www.exploregroup.com.au

PIONEER JET WHITSUNDAYS

The Ultimate Jet-Boat Experience!

See the Best of Airlie from the water. Full of 180's, 360's, Drifts, Powerstops and full throttle action, this is the ultimate scenic tour that is perfect for everyone. Packed with Value including Free Photos and Transfers.



Abell Point Yacht Club, Airlie Beach QLD 4802
P: 1800 335 975 E: info@pioneerjet.com.au
www.pioneerjet.com.au

THUNDERCAT WHITSUNDAYS

Thundercat offers an exhilarating ride around the Whitsunday Islands. This vessel is designed for stability, speed and comfort. This day trip includes two snorkel stops, two beaches and Hill Inlet Lookout.



Abell Point Marina, Airlie Beach QLD 4802
P: 1300 653 100 E: info@redcatadventures.com.au
www.redcatadventures.com.au

REEFSTAR CRUISES

Family owned and operated, we are proud to provide a unique opportunity to enjoy the best of the Whitsundays. Cruise in comfort as you explore 3 of the best Island destinations.



1/283 Shute Harbour Road, Airlie Beach QLD 4802
P: 07 4946 5255 E: bookings@reefstarcruises.com
www.reefstarcruises.com

SALTY DOG SEA KAYAKING

Island paddling
Half and full day guided sea kayaking tours, 6-day guided kayaking expeditions, and sea kayak hire and sales.



Shute Harbour Jetty, Shute Harbour QLD 4802
P: 07 4946 1388 E: info@saltydog.com.au
www.saltydog.com.au

CHARTER YACHTS AUSTRALIA

Whitsunday Skipper Yourself Charters – Cruise 74 islands. Choose from our fully equipped, modern fleet of Yachts, Sailing and Power Catamarans. Suitable for couples, families and groups to 10. Crewed and Honeymoon packages available.



Shop 10, Abell Point Marina, Shingley Drive, Airlie Beach QLD 4802
P: 1800 639 520 E: charter@cya.com.au
www.charteryachtsaustralia.com.au

CUMBERLAND CHARTER YACHTS

Bareboating holidays in the Whitsundays
Cruise and sail the Whitsundays on board a luxury yacht, catamaran or motor cruiser. Minimum 3 night stay.



Shop 18, Abell Point Marina, Shingley Drive, Airlie Beach QLD 4802
P: 1800 075 101 E: cruise@ccy.com.au
www.ccy.com.au

QUEENSLAND YACHT CHARTERS MEMBER OF DREAM YACHT CHARTER



Skipper Yourself Boating Holidays

With over 25 years' experience in Skipper Yourself Boating Holidays, QYC has the Newest Boats in the Whitsunday Fleets, now introducing the experience of a new level of Luxury sailing in "Open Space" with the addition of the Bali 4.0 and the Bali 4.3 Catamarans built by Catana in France. QYC has the largest range of Sailing vessels – Monohulls, Catamarans and Power Boats for every budget. Choose your holiday from a Luxury Sailing Cat with a Skipper and Hostess to an intimate skipper yourself sailing adventure cruising the beautiful Whitsunday Islands. Our aim is for you to have the most memorable sailing holiday of your dreams. No licence required.



Abell Point Marina, Airlie Beach QLD 4802
P: 1800 075 013
E: reservations@yachtcharters.com.au
www.yachtcharters.com.au

WHITSUNDAY ESCAPE



Skipper Yourself Bareboat Charters

The largest range of budget and luxury bareboats in the Whitsundays, accommodating 2 – 12 people per boat. Choose your own adventure – romance, relaxation, family fun, fishing trip, swim, snorkel the reefs, visit beaches, bushwalks... it's entirely up to you! Our friendly, knowledgeable, award-winning team will take excellent care of you.

- No licence required
- Safe anchorages
- Snorkelling gear included
- Power & sail boats available
- Boat & area briefing provided
- Largest fleet in the Whitsundays
- Fully self-contained kitchen
- Linen provided



Abell Point Marina, Airlie Beach QLD 4802
P: 1800 075 145
E: charter@whitsundayescape.com
www.WhitsundayEscape.com

WHITSUNDAY RENT A YACHT

Explore the Whitsundays on a bareboat charter holiday. Choose from a range of yachts, catamarans and cruisers. Snorkelling, sailing, secluded anchorages and pristine beaches – we provide access to it all! No licence required.



6 Bay Terrace, Shute Harbour QLD 4802
P: 1800 075 000 E: holiday@rentayacht.com.au
www.rentayacht.com.au

LADY ENID SAILING

Lady Enid Sailing delivers a barefoot luxury experience on a rare Australian classic 72 ft yacht, with day sails to Whitehaven Beach and Hill Inlet. With elegant lines, a rich history, attentive service and the gourmet menu is certainly a feature. We sail with low numbers to avoid the crowds and to maximise your experience of the Whitsundays.



Port of Airlie Marina, Airlie Beach QLD 4802
P: 0407 48 3000 E: nicole@ladyenid.com.au
www.ladyenid.com.au

EXPLORE WHITSUNDAYS



Explore Whitsundays provides catered and guided sailing, snorkelling and diving tours. Starting with one vessel in 1985, today guests have a choice of 17 vessels, deluxe yachts, catamarans to tall ships to fast racing yachts, with accommodation options ranging from open plan cabins with bunks to private double cabins appointed with private bathrooms, TVs and air conditioning. Guests can do as much or as little as they desire, whether taking a guided walk to Hill Inlet Lookout over Whitehaven Beach or relaxing on a beach and watching the sunset over the water. We prepare and serve all meals: breakfast, morning tea/afternoon tea, lunch and dinner. We also arrange charters for weddings, reunions or education groups.



Shop 1, 4 Airlie Esplanade, Airlie Beach QLD 4802
P: 07 4946 4999
E: bookings@explorewhitsundays.com
www.explorewhitsundays.com

TRUE BLUE SAILING

Famous for our fun atmosphere and energetic crew, we provide a unique sailing trip to the amazing Whitsundays!



344 Shute Harbour Road, Airlie Beach QLD 4802
P: +61 7 4946 5755 E: info@abctravel.net.au
www.truebluesailing.com.au

SEA FEVER SPORTFISHING

Exclusively targeting the reef since 2009, Sea Fever steam past the Whitsunday Islands, approx 80kms, giving you the best opportunity of catching quality fish. Owner/Captain Ashley Matthews and his crew's local fishing knowledge is second to none.

- Full day or popular 1-4 night adventures
- Game, sport & reef fishing
- Hardworking, friendly & highly skilled

Departing Shute Harbour
P: 07 4948 2798 E: info@seafever.com.au
www.seafever.com.au



PORTLAND ROADS SAILING THE WHITSUNDAYS

The best boats at the best price; That's our guarantee. So pack your sunhat, sunglasses and bathers and come sailing with us in paradise. Bare-boat and skippered charters available. Use this Visitor Guide promotion code and our Book Now Pay Now (BNPN) terms for this amazing HALF PRICE offer.

BOOK NOW: Use code W-VG-16/17 for HALF PRICE redemption.

Abell Point Marina, Shingley Drive, Airlie Beach QLD 4802
P: 0427 814 553 E: portlandroads@gmail.com
www.74islandsboat.com.au



TALLSHIP ADVENTURES

Derwent Hunter Day Tours – experience the romance of sail, snorkel over coral reefs teeming with sea-life, explore islands and atolls, enjoy eco-interpretive presentations and fantastic food prepared fresh onboard.



Abell Point Marina South, Airlie Beach QLD 4802
P: 1800 334 773 E: booknow@tallshipadventures.com.au
www.tallshipadventures.com.au



RENEGADE FISHING CHARTERS



Let our experienced crew take you on a fishing trip to remember in the beautiful Whitsundays!

Fish in comfort on board our game fishing boats which are equipped with quality tackle, a toilet, seating, shade and a sound system. Servicing Airlie Beach, Hamilton Island and most Whitsunday Island resorts with a range of charter options, we cater for all levels of experience. Why not book a private charter and we can tailor the day to suit you?!

All charters include tackle, bait, ice, water and soft drinks. Full day charters also include morning tea and lunch.



Airlie Beach and Hamilton Island QLD 4802
P: 0429 724 822
E: info@renegadecharters.com.au
www.renegadecharters.com.au

QUEENS BEACH TOURIST VILLAGE



Queens Beach Tourist Village boasts seven acres of garden sites just a short stroll to a beautiful sandy beach, playgrounds, esplanade, exercise equipment, seaside golf, tennis, lawn bowls, clubs, medical centre, cinemas, hotel, takeaway and convenience store. We have got it all at our fingertips.



Enjoy the tranquillity of Bowen's beaches and bays. Stay in one of our neat 3.5 and 4-Star air-conditioned, self-contained ensuite cabins or bring your own caravan or camping gear and appreciate our spacious, well-grassed sites. Relax and refresh in or around our crystal clear swimming pool or in the cool of a shady tree.



160 Mt Nutt Road, Bowen QLD 4805
P: 07 4785 1313
E: info@qbtvbowen.com.au
www.qbtvbowen.com.au

ROSE BAY RESORT



Absolute Beachfront – Absolutely Stunning
Nestled in a secluded beach away from the rest of the world, award winning Rose Bay Resort offers a perfect getaway to relax and enjoy the peace and tranquillity. Situated on absolute waterfront with unsurpassed sea and island views over sparkling turquoise waters, you will be totally mesmerised by the proximity of the ocean. With only a few footsteps, you will find yourself on the beach, snorkelling, fishing or just relaxing. Studios, One and Two bedroom apartments or luxury penthouses, whatever your accommodation requirements, Rose Bay Resort has it covered.

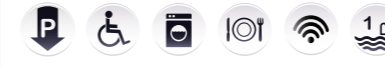


2-4 Pandanus Street, Rose Bay, Bowen QLD 4805
P: 07 4786 9000
E: info@rosebayresort.com.au
www.rosebayresort.com

AIRLIE BEACH HOTEL



"When location is everything, the Airlie Beach Hotel has everything."
The Airlie Beach Hotel is located on the Esplanade and boasts ocean views, a village atmosphere, 3 onsite restaurants and a convenient landmark location. Discover the Great Barrier Reef and 74 Whitsunday Islands with daily tours. Rated as 4 stars, the hotel has 60 rooms, including self-contained suites with balconies.



Cnr The Esplanade & Coconut Grove, Airlie Beach QLD 4802
P: 1800 466 233
E: reservations@airliebeachhotel.com.au
www.airliebeachhotel.com.au

AIRLIE BEACH MOTOR LODGE

Motel, self-contained studio apartments and two bedroom townhouses set in quiet, tropical gardens with under cover parking. 200 metre walk to Airlie Beach and lagoon. Pool, BBQ, sauna, billiard table and pet friendly.



6 Lamond Street, Airlie Beach QLD 4802
P: 07 4946 6418 E: stay@airliebeachmotorlodge.com.au
www.airliebeachmotorlodge.com.au

BIG4 ADVENTURE WHITSUNDAY RESORT



At BIG4 Adventure Whitsunday Resort you'll discover top quality accommodation options from camping and caravanning, stylish studio cabins, through to luxurious 3 bedroom condos with pool views, all set amidst 26 gorgeous acres of botanic-like gardens. The multi award winning resort's facilities include Airlie Beach's largest lagoon style pool, two waterslides, outdoor cinema, adventure playground, animal park, two jumping pillows, mini golf, tennis, all year activity program, kids club, toddler time, an extensive school holiday program and a HUGE waterpark opening in 2017! The onsite multi-purpose function venue, The Palm House, offers a welcome addition to the resort's facilities for social and business functions in the Whitsundays.



25-29 Shute Harbour Road, Airlie Beach QLD 4802
P: 1300 640 587
E: reservations@adventurewhitsunday.com.au
www.adventurewhitsunday.com.au

LE SORELLE THE SISTERS COFFEE HOUSE

The Whitsundays Ultimate Coffee House Experience!

- Coffee & Dessert
- Breakfast & Lunch
- Gourmet Fudge
- Free Wi-Fi
- Indoor & Outdoor Dining
- Kids Playground
- Florist & Gift Shop



52 Richmond Road, Bowen QLD 4805
P: 07 4786 1206 E: info@lesorellecoffeehouse.com.au
www.lesorellecoffeehouse.com.au

BIG4 BOWEN CORAL COAST BEACHFRONT HOLIDAY PARK

Your Whitsunday paradise!
Like a tropical island holiday on the mainland. Absolute waterfront villas and sites. Relax under a palm tree. Fish off the waterfront. Swim in the lagoon pool. Free Wi-Fi.



Beach end of The Soldiers Road, Bowen QLD 4805
P: 1800 602 469 E: stay@big4bowen.com.au
www.big4bowen.com.au

BIG4 AIRLIE COVE RESORT AND CARAVAN PARK

BIG4 Airlie Cove Resort and Caravan Park is a tranquil, tropical haven offering a range of accommodation from 4 star Bali Villas to camp sites, located only 2kms from Airlie Beach.



2634 Shute Harbour Road, Airlie Beach QLD 4802
P: 07 4946 6727 E: admin@airliecove.com.au
www.airliecove.com.au

LUXE FASHION HOUSE

Spoil yourself at Bowen's luxury fashion boutique. High quality, on-trend, fresh clothing pieces at affordable prices.

- Women's Fashion
- Clothing Sizes 6 to 20
- Shoes, Bags and Hats
- Accessories
- Organic Cosmetics
- Giftware



50 Powell Street, Bowen QLD 4805
P: 0401 322 336 E: info@luxefashionhouse.com.au
www.luxefashionhouse.com.au

HORSESHOE BAY RESORT

- Beach Balcony Units
- Fully self-contained Beach Huts
- Cabin-vans
- Van & tent sites
- Boat ramp
- Camp kitchen & BBQ
- Licensed Café
- Sandy beach
- Snorkel, boogie board hire
- Pool with children's pool
- Scenic walking tracks
- Fringing reef



1 Horseshoe Bay Road, Bowen QLD 4805
P: 07 4786 2564 E: horsesh@bigpond.net.au
www.horseshoebayresort.com.au

BASE AIRLIE BEACH RESORT

Luxuries of a resort at backpacker prices!

Meet other travellers in our clean, comfortable multi-share rooms, or treat yourself to a private room with your own bath, fridge, air-conditioning and TV. Set on 6 acres we also offer camping sites.



336 Shute Harbour Road, Airlie Beach QLD 4802
P: 1800 24 BASE E: airliebeach@stayatbase.com
www.stayatbase.com

CAPE GLOUCESTER RESORT

Still relatively unknown, this isolated piece of paradise is easily accessible. Well equipped, air-conditioned cabins offer privacy while still optimising on the intimate atmosphere. The open air beach front Oar Bar & Restaurant is open daily. 25 metre swimming pool, day guests welcome, laundry facilities, disabled facilities and accommodation available. Weddings, functions and birthdays.



128 Gloucester Avenue, Hydeaway Bay QLD 4800
P: 07 4945 7242 E: info@capeg.com.au
www.capeg.com.au

COLONIAL PALMS MOTOR INN

Enjoy the quiet tropical pool surrounds of the units. Continental breakfast included, undercover parking and free Wi-Fi. Licensed restaurant opened to public.



2 Hermitage Drive, Airlie Beach QLD 4802
P: 07 4946 7166 E: cpmi@colonialpalmsmotorinn.com.au
www.colonialpalmsmotorinn.com.au

CORAL SEA RESORT



Coral Sea Resort is positioned on the absolute ocean front and is a 300 metre stroll via seaside boardwalk to the enchanting Airlie Beach resort village with its relaxed atmosphere and collection of eclectic shops and cafes. A stroll in the opposite direction crossing a separate boardwalk with the sea below is Abell Point Marina, your direct access to the Whitsunday Islands, Whitehaven Beach and the Great Barrier Reef. Coral Sea Resort features a variety of hotel rooms including deluxe suites and full service apartments, penthouses and beach houses. All accommodation is serviced daily. Facilities include an award winning oceanfront restaurant, private dining seaside gazebo, cocktail lounge, fitness room, disabled and lift access, massage facilities, private jetty, complimentary Wi-Fi, 25 metre pool, wedding chapel, resort shopping and tour desk.



25 Oceanview Avenue, Airlie Beach QLD 4802
P: 1800 075 061
E: stay@coralsearesort.com
www.coralsearesort.com

HEART HOTEL AND GALLERY WHITSUNDAYS



Heart Hotel and Gallery Whitsundays features an unrivalled location, literally in the heart of the cosmopolitan seaside resort village of Airlie Beach. The hotel features thoughtfully decorated luxury rooms, complementing upper level club floor rooms and modern elegant suites with Airlie Beach or Coral Sea ocean views. From the moment you arrive, you'll be greeted by our gracious team of bespoke butlers which offer highly personalised intuitive service. Heart Hotel and Gallery Whitsundays restaurant and lounge bar are casual, yet glamorous and sophisticated, featuring locally inspired food and beverages which are adjacent to the hotel's retail precinct and lobby. The boutique art gallery located on the top floor of the hotel features monthly exhibitions from local Whitsunday artists.



277 Shute Harbour Road, Airlie Beach QLD 4802
P: 1300 847 244
E: stay@hearthotelwhitsundays.com.au
www.hearthotelwhitsundays.com.au

KIPARA TROPICAL RAINFOREST RETREAT

Great value accommodation set in peaceful lush tropical gardens. Kipara is the perfect retreat for an overnight visit, a short holiday or great for group bookings with use of the function hall.



2614 Shute Harbour Road, Jubilee Pocket QLD 4802
P: 07 4946 6483 E: info@kipara.com.au
www.kipara.com.au

MAGNUMS AIRLIE BEACH

Winner of 2012, 2013, 2014 and 2015 Whitsunday Tourism Awards – Backpacker Accommodation!
Magnums is a tropical budget resort in the heart of Airlie Beach. Licensed travel agent specialising in local tours. Free Wi-Fi throughout resort. All rooms air-conditioned.



366 Shute Harbour Road, Airlie Beach QLD 4802
P: 1800 624 634 E: travel@magnums.com.au
www.magnums.com.au

MANTRA BOATHOUSE APARTMENTS

Mantra Boathouse Apartments in Airlie Beach is situated at the gateway to the Whitsundays Islands. Here you are immersed in an island atmosphere, providing the ideal place to discover this tropical region. Stay in a contemporary 2 or 3 Bedroom Apartment right on the Port of Airlie Marina.



33 Port Drive, Airlie Beach QLD 4802
P: 13 15 17 E: boathouse.res@mantra.com.au
www.mantra.com.au

NOMADS AIRLIE BEACH

7 acres of tropical flora and fauna in the centre of town with:

- Swimming pool
- Free Wi-Fi
- Volleyball court
- Poolside bar
- Powered and non powered camping facilities!



336 Shute Harbour Road, Airlie Beach QLD 4802
P: 07 4948 2000 E: bookings@nomadsworld.com
www.nomadsworld.com

PALM BAY RESORT

Palm Bay is a beautiful boutique resort nestled in the neck of Long Island. A secluded private cove offering spacious, absolute beachfront, Balinese inspired villas, in a tranquil and stunning location. Suit honeymooners and couples looking for a special retreat. Exclusive use of whole resort available for groups.



Palm Bay, Long Island, Whitsundays QLD 4802
P: 1300 655 126 E: helen@palmbayresort.com.au
www.palmbayresort.com.au

PINNACLES RESORT

5 Star Luxury 1, 2 and 3 bedroom self-contained apartments all with magnificent Coral Sea views, king size bed and internal spa tub or balcony jacuzzi. Onsite facilities include a 20m heated ozone swimming pool, gym, sauna and tour desk.



16 Golden Orchid Drive, Airlie Beach QLD 4802
P: 07 4948 4800 E: reservations@pinnaclesresort.com
www.pinnaclesresort.com.au

MIRAGE WHITSUNDAYS



The combination of absolute waterfront luxury suites and the highest standard of indulgence makes Mirage Whitsundays the most exclusive address in the Whitsundays. The newest addition to the luxury accommodation market, Mirage Whitsundays provides sumptuously appointed apartments, villas and penthouses all endowed with epicurean kitchens, indulgent bathrooms and the most spacious terraces with breathtaking island-dotted ocean views. Private plunge pools, outdoor showers, ocean view spa baths and rooftop balconies count as some of the luxurious pleasures on offer. Mirage Whitsundays' contemporary living also extends to its 2 magnificently landscaped lagoon pools, outdoor spa and secured gated undercover car park. Restaurant, Day Spa and Gym due for opening January 2017.



11 Altmann Avenue, Cannonvale QLD 4802
P: 1300 088 988
E: reservations@miragewhitsundays.com.au
www.miragewhitsundays.com.au

PEPPERS AIRLIE BEACH

Magnificently set overlooking the majestic Whitsundays Passage, Peppers Airlie Beach offers indulgent one, two and three bedroom spa apartments, providing luxury like nowhere else on the mainland of the Whitsundays.



Mt Whitsunday Drive, Airlie Beach QLD 4802
P: 1800 064 080 E: airliebeach@peppers.com.au
www.peppers.com.au/airlie-beach

SEA STAR APARTMENTS

Sea Star Apartments offers 1, 2 and 3 Bedroom self-contained apartments offering stunning island and ocean views from every terraced apartment. Infinity pool, Foxtel and free WiFi.



2 Nara Avenue, Airlie Beach QLD 4802
P: 07 4948 1188 E: bookings@seastarapartments.com.au
www.seastarapartments.com.au

SEABREEZE TOURIST PARK

Seabreeze Tourist Park is ideally located – a leisurely stroll along the Bicentennial Walkway (along the water) and you are in the heart of Airlie Beach, passing shops and restaurants on the way.

- Ocean views
- Pet friendly (conditions apply)
- Closest tourist park on arrival to Airlie Beach



234 Shute Harbour Road, Airlie Beach QLD 4802
P: 07 4946 6379 E: admin@seabreezepark.com.au
www.seabreezepark.com.au

SHINGLEY BEACH RESORT

Self-contained 1, 2 & 3 Bedroom waterfront apartments

- Spacious rooms with private balconies overlooking ocean and marina
- Swimming pools and complimentary Wi-Fi
- Perfectly located – short walk to main street



115 Shingley Drive, Airlie Beach QLD 4802
P: 07 4948 8300 E: bookings@shingleybeachresort.com
www.shingleybeachresort.com

TOSCANA VILLAGE RESORT

Looking for good value, great location and amazing views? Toscana Village Resort features spacious ocean view apartments in a Tuscan inspired setting, located just 200 metres to the foreshore and village centre. We would love to help you plan your next great fun family get together in the magical Whitsundays!



10 Golden Orchid Drive, Airlie Beach QLD 4802
P: 07 4946 4455 E: info@toscanaresort.com
www.toscanaresort.com

WHITSUNDAYS RAINFOREST RETREAT

Whitsundays Rainforest Retreat is perfectly positioned. Nestled within the Hillside Rainforest but only a 5 minute drive to Airlie Beach and Abell Point Marina. (7 minutes' walk to all facilities including shops, restaurants, cafes and transport). Our suites have a/c, fridge, tea/coffee making and private ensuites.



13 Border Drive, Cannonvale QLD 4802 (above Whitsundays Cayman Estate)
P: 0414 869 289 E: caymanresorts@bigpond.com
www.whitsundaysrainforestretreat.com

LURE, ABELL POINT MARINA

Imagine celebrating your paradise wedding with picturesque waterfront views. Lure is the jewel of the crown in Abell Point Marina, dedicated to delivering your perfect ceremony and reception for up to 200 guests.



Shingley Drive, Airlie Beach QLD 4802
P: 07 4946 2407 E: events@lurewhitsundays.com
www.lurewhitsundays.com

THE PALM HOUSE

The Palm House at BIG4 Adventure Whitsunday Resort features exceptional wedding ceremony and reception facilities for up to 200 guests and a range of onsite accommodation. The botanic-like gardens and outdoor pavilion provide a stunning and intimate setting.



25-29 Shute Harbour Road, Airlie Beach QLD 4802
P: 07 4948 5444 E: info@thepalmhouse.com.au
www.thepalmhouse.com.au

VILLA BOTANICA

Villa Botanica – Australia's most exquisite wedding venue. A sprawling paradise of amazing architecture and graphic gardens perched right on the water's edge, only minutes from Airlie Beach, yet totally private and exclusively yours. Now available for private functions and events!



Botanica Drive, Woodwark QLD 4802
P: 1800 795 990 E: marketing@botanicaweddings.com
www.botanicaweddings.com

ISLAND PHOTOS – JETSKI PHOTOGRAPHER

If you're adventure sailing, snorkelling, diving, sport fishing or whale watching in the Whitsundays... portraits, weddings and events, the Jetski Photographer has got it covered. Ask your tour operator for information.



PO Box 1142, Airlie Beach QLD 4802
P: 0404 101 212 E: jetski@islandphotos.com.au
www.islandphotos.com.au

WHITSUNDAY TRANSIT



Airport Transfers

Hi, joining us in the Whitsundays? We, Whitsunday Transit meet all flights at the Whitsunday Coast Airport with luxury air-conditioned coaches to transfer you to your accommodation house of choice, or to Port of Airlie or Abell Point Marina if you are heading to the islands. Our Airport ambassadors will meet you upon your arrival to help you get your holiday started. Enjoy friendly, relaxed and hassle free travel that will put you in holiday mode from the moment you touchdown. Book easily online at our website, through your agent or call us direct. We look forward to meeting you.



Orchid Road, Cannonvale QLD 4802
P: 07 4946 1800
E: reservations@whitsundaytransit.com.au
www.whitsundaytransit.com.au

WHITSUNDAYS 2 EVERYWHERE

Airport Transfers

Personalised shuttle service meeting every flight to/from Whitsunday Coast Airport. Maximum 24 seat air-conditioned vehicles transfer you to the door of your accommodation quickly and efficiently. Private transfers and charters available.



61 Carlo Drive, Cannonvale QLD 4802
P: 07 4946 4940 E: res@whitsundaytransfers.com
www.whitsundaytransfers.com

AIRLIE BEACH TRANSFERS AND TOURS

Airlie Beach Transfers and Tours offer shuttle and private transfers to and from Whitsunday Coast Airport, day and sunset tours to Hydeaway Bay and the Great Whitsunday Food Trail.



Shingley Drive, Airlie Beach QLD 4802
P: 0438 089 682 E: info@abtt.com.au
www.abtt.com.au

WHITSUNDAY SAILING CLUB

Enjoy the stunning water views on the best balcony in Airlie Beach. The outside dining experience is complemented with tropical weather, icy cold drinks and an amazing bistro. Offering coffee to cocktails while featuring a modern gaming room, keno and friendly staff, the club has it all. Lunch and dinner 7 days a week. Breakfast on weekends.



Airlie Point, Airlie Beach QLD 4802
P: 07 4946 6138 E: functions@whitsundaysailingclub.com.au
www.whitsundaysailingclub.com.au

SOUTHERN CROSS AUSTEREO

HOT FM, SEA FM and the 9 Network, a part of Australia's most engaging media network, Southern Cross Austereo. We create more hours of live content than any other broadcast media in Australia and can connect brands with 95% of Australians each week via our regional free-to-air TV networks, national radio networks, online, mobile and unique one off events. Our wide range of media offerings gives us the unique opportunity to provide inventive, interactive and cross platform campaigns.



Level 3, Suite 3, 123 Victoria Street, Mackay QLD 4740
P: 07 4953 2033 E: Roxanne.Tuugavao-Soe@sca.com.au
www.southerncrossaustereo.com.au

TAFE QUEENSLAND NORTH

Do It With A Diploma

Start your journey today with a diploma from TAFE Queensland North.

- Flexible study options
- Practical, job-ready skills
- Industry recognised qualifications
- VET FEE-HELP – Study Now, Pay Later by accessing a government loan (eligibility criteria applies)



Shute Harbour Road, Cannonvale (The Whitsundays) QLD 4802
P: 07 4940 2777
www.tafenorth.edu.au

BILLABONG SANCTUARY – TOWNVILLE

Australia's best interactive wildlife experience

Native animals displayed in their own natural habitats – hold a koala, crocodile and python; hug a wombat and pat a dingo. Wildlife talks all day including feeding of giant saltwater crocodiles twice a day.



Bruce Highway, Townsville (15 minutes' drive south of city)
P: 07 4778 8344 E: rangers@billabongsanctuary.com.au
www.billabongsanctuary.com.au

WHITSUNDAYS DIRECTORY

Travel Information

Accredited Visitor Information Centres	
Business details	Page ref
Bowen Visitor Information Centre 07 4786 4222 www.tourismbowen.com.au	
Whitsunday Region Information Centre 07 4945 3967 www.tourismwhitsundays.com.au	
Visitor Information	
Airlie Beach Tourism 07 4948 2888	
Airliebeach.com 07 4946 5299 www.airliebeach.com	
Collinsville Information Office 07 4785 5795 www.tourismwhitsundays.com.au/destinations/collinsville	
Transport Facilities and Services	
Airlie Beach Transfers and Tours 0438 089 682 www.abtt.com.au	
Hamilton Island Airport 07 4946 8620 www.hamiltonisland.com.au/getting-here/airport	
Queensland Rail Travel 1300 131 722 www.queenslandrailtravel.com.au	
Whitsunday Coast Airport 07 4945 0200 www.whitsundaycoastairport.com.au	
Whitsunday Transit 07 4946 1800 www.whitsundaytransit.com.au	
Whitsundays 2 Everywhere 07 4946 4940 www.whitsundaytransfers.com	

What's On

Airlie Beach Festival of Music 0411 477 908 www.airliebeachfestivalofmusic.com.au	
Airlie Beach Race Week Festival of Sailing 07 4946 6138 www.abrw.com.au	
Airlie Beach Running Festival 0418 768 493 www.runairlie.com.au	
Schoolies 07 5572 7627 www.schoolies.com	
Whitsunday Reef Festival 0418 155 542 www.whitsundayreeffestival.com.au	
Whitsunday Writers Festival 0422 026 793 www.whitsundaywritersfestival.com	

Shopping, Dining and Nightlife

Amici at One&Only Hayman Island 07 4940 1234 www.oneandonlyresorts.com/one-and-only-hayman-island-australia/cuisine/amici	
Airlylywood 0476 233 689 www.airlylywood.com.au	
Aquazure at One&Only Hayman Island 07 4940 1234 www.oneandonlyresorts.com/one-and-only-hayman-island-australia/cuisine/aquazure	
Bamboo at One&Only Hayman Island 07 4940 1234 www.oneandonlyresorts.com/one-and-only-hayman-island-australia/cuisine/bamboo	
Beach Club Restaurant on Hamilton Island 07 4946 9999 www.hamiltonisland.com.au/restaurants/beach-club	
Bommie Restaurant on Hamilton Island 07 4946 9999 www.hamiltonisland.com.au/restaurants/bommie	
Capers at Airlie Beach Hotel 07 4964 1777 www.airliebeachhotel.com.au/restaurants/capers	
Clippers at Coral Sea Resort 07 4964 1300 www.coralsearesort.com/dining	
Clubhouse Restaurant on Dent Island (Hamilton Island) 07 4946 9999 www.hamiltonisland.com.au/bars-and-clubs/clubhouse-restaurant	
Down Under Bar 07 4948 2000 www.stayatbase.com/hostels/australia/airlie-beach/base-airlie-beach-resort	
Fat Frog Café 0417 979 960 www.facebook.com/fatfrogbeachcafe	
Fish D'vine 07 4948 0088 www.fishdvine.com.au	

Manta Ray on Hamilton Island 07 4946 9999 www.hamiltonisland.com.au/restaurants/manta-ray	
Marina Tavern on Hamilton Island 07 4946 9999 www.hamiltonisland.com.au/bars-and-clubs/marina-tavern	
Mariners on Hamilton Island 07 4946 9999 www.hamiltonisland.com.au/restaurants/mariners	
McDonalds www.mcdonalds.com.au	
Mermaids on Daydream Island 07 4948 8488 www.daydreamisland.com/dining/mermaids	
Mr Bean Cold Brew Coffee 0407 666 539 www.mrbeancoldbrew.com	
On the Rocks at One&Only Hayman Island 07 4940 1234 www.oneandonlyresorts.com/one-and-only-hayman-island-australia/cuisine/on-the-rocks	
Pacific at One&Only Hayman Island 07 4940 1234 www.oneandonlyresorts.com/one-and-only-hayman-island-australia/cuisine/pacific	
Peach and Pear Catering 0418 847 401 www.peachpearcatering.com.au	
Pebble Beach on Hamilton Island 07 4946 9999 www.hamiltonisland.com.au/restaurants/pebble-beach	
Pool Terrace on Hamilton Island 07 4946 9999 www.hamiltonisland.com.au/restaurants/pool-terrace	
Romanos on Hamilton Island 07 4946 9999 www.hamiltonisland.com.au/restaurants/romanos	
Sails on Hamilton Island 07 4946 9999 www.hamiltonisland.com.au/restaurants/sails	
Sorrento Restaurant & Bar 07 4946 7454 www.sorrentowhitsunday.com	
Subway Proserpine 07 4945 3211	
Tako on Hamilton Island 07 4946 9999 www.hamiltonisland.com.au/restaurants/tako	
The Deck Restaurant 1300 847 244 www.hearthotelwhitsundays.com.au	
Treehouse 07 4946 5550 www.airlietreehouse.com	
Whitsunday Provisioning 07 4946 7344 www.whitprov.com.au	

National Parks and Camping

Scamper Island Camping Water Taxi 07 4946 6285 www.whitsundaycamping.com.au	
Department of National Parks, Sport and Racing 137 468 www.npsr.qld.gov.au	

Tours and Attractions

In The Air	
Air Whitsunday Seaplanes 07 4946 9111 www.airwhitsunday.com.au	
Airlie Helipad 1300 668 716 www.thehelipad.com	
GSL Aviation 1300 475 247 www.gslaviation.com.au	
Hamilton Island Air 07 4969 9599 www.hamiltonislandair.com	
Whitsunday Tiger Moth Adventures 07 4946 9911 www.tigermothadventures.com.au	
On Land	
Abell Point Marina 07 4946 2400 www.abellpointmarina.com.au	
Earlando 07 4945 7132 www.earlando.com.au	
Just Tuk'n Around 0421 513 033 www.justtuknaround.com.au	
Napa Gallery 0419 400 010 www.facebook.com/NapaGalleryAirlieBeach	
Proserpine Golf Club 07 4945 1337 www.proserpinegolfclub.com.au	
Whitsunday Crocodile Safari 07 4948 3310 www.crocodilesafari.com.au	

Whitsunday Segway Tours 0432 734 929 www.whitsundaysegwaytours.com.au	
On the Water	
Cruise Whitsundays 07 4846 7000 www.cruisewhitsundays.com	
Explore Hamilton Island 07 4946 9664 www.exploregroup.com.au	
Ocean Rafting 07 4946 6848 www.oceanrafting.com.au	
Pioneer Jet Whitsundays 1800 335 975 www.pioneerjet.com.au	
Prosail Queensland Pty Ltd 1800 810 116 www.prosail.com.au	
Red Cat Adventures 07 4940 2000 www.redcatadventures.com.au	
Reefstar Cruises 07 4946 5255 www.reefstarcruises.com.au	
Salty Dog Sea Kayaking 07 4946 1388 www.saltydog.com.au	
Sundowner Cruises 0407 483 000 www.sundownercruises.com.au	
Whitsunday Jetski Tours 0459 538 754 www.jetskitour.com.au	
Whitsunday Paradise Explorer 0428 542 508 www.whitsundayparadisexplorer.com	
On the Water – Bareboating	
Charter Yachts Australia 1800 639 820 www.charteryachtsaustralia.com.au	
Cumberland Charters Yachts 1800 075 101 www.ccy.com.au	
Queensland Yacht Charters 1800 075 013 www.yachtcharters.com.au	
Whitsunday Escape 1800 075 145 www.whitsundayescape.com	
Whitsunday Rent A Yacht 1800 075 000 www.rentayacht.com.au	
On the Water – Sail Away	
Atlantic Clipper 07 4946 5755 www.truebluesailing.com.au	
Explore Whitsundays 07 4946 5932 www.explorewhitsundays.com	
Isail Whitsundays 1300 414 419 www.isailwhitsundays.com	
Lady Enid 0407 48 3000 www.ladyenid.com.au	
Oz Sail 1300 697 245 www.ozsail.com.au	
Portland Roads 0427 814 553 www.74islands1boat.com.au	
Southern Cross Sailing Adventures 07 4946 4999 www.soxsail.com.au	
Sunsail Whitsundays 1800 803 988 www.sunsail.com.au	
Tallship Adventures 1800 334 773 www.tallshipadventures.com.au	
True Blue Sailing 07 4946 5755 www.truebluesailing.com.au	
Whitsunday Getaways 07 4948 2959 www.whitsunday-getaways.com	
Wings Whitsunday Adventures 07 4948 2037 www.wings.com.au	
Whitsundays Sailing Adventures 07 4940 2000 www.whitsundayssailingadventures.com.au	
On the Water – Fishing	
Coral Sea Fishing Charters Airlie Beach 0427 863 474 www.gonefishingcharters.com.au	
Fishing Whitsundays 07 4946 6000 www.fishingwhitsundays.com	
Renegade Fishing Charters 0429 724 822 www.renegadecharters.com.au	
Sea Fever Sportfishing Whitsundays 07 4948 2798 www.seafever.com.au	
Whitsunday Fishing Charters 0457 822 553 www.whitsundayfishingcharters.com.au	

Island Resort Accommodation

Daydream Island Resort and Spa 1800 075 040 www.daydreamisland.com	
Hamilton Island Enterprises 137 333 www.hamiltonisland.com.au	
One&Only Hayman Island 02 9308 0500 www.oneandonlyhaymanisland.com.au	
Palm Bay Resort 1300 655 126 www.palmbayresort.com.au	
Whitsunday Apartments Hamilton Island 07 4969 9999 www.wahi.com.au	

Bowen

Le Sorelle Coffee House and Florist 07 4786 1206 www.lesorellecoffeehouse.com.au	
Rose Bay Resort 07 4786 9000 www.rosebayresort.com	

Whitsunday Coast Accommodation

Airlie Beach Hotel 07 4964 1999 www.airliebeachhotel.com.au	
Airlie Beach Motor Lodge 07 4946 6418 www.airliebeachmotorlodge.com.au	
Airlie Beach YHA 07 4946 6312 www.yha.com.au	
At Beach Court Holiday Villas 07 4946 5316 www.athotelgroup.com.au/at-beach-court-holiday-villas.html	
At Blue Horizon 07 4948 3500 www.athotelgroup.com.au/bhr.html	
At Boathaven Spa resort 07 4948 4948 www.athotelgroup.com.au/bsr.html	
At Marina Shores 07 4964 1500 www.athotelgroup.com.au/msa.html	
At Waterfront Whitsunday Retreat 07 4948 6500 www.athotelgroup.com.au/wwr.html	
At Waters Edge 07 4948 4300 www.athotelgroup.com.au/wer.html	
At Whitsunday Vista Resort 07 4948 4000 www.athotelgroup.com.au/wvr.html	
Base Airlie Beach Resort 07 4948 2000 www.stayatbase.com/hostels/australia/airlie-beach/base-airlie-beach-resort	
Best Western Mango House Resort 07 4946 4666 www.bestwestern.com.au/airlie-beach/hotels/best-western-mango-house-resort/	
BIG4 Adventure Whitsunday Resort 1300 640 587 www.adventurewhitsunday.com.au	
BIG4 Airlie Cove 1800 653 445 www.airliecove.com.au	
Cape Gloucester Beach Resort 07 4945 7242 www.capeg.com.au	
Club Croc Hotel 1800 075 151 www.clubcroc.com.au	
Colonial Palms Motor Inn 07 4946 7166 www.colonialpalmsmotorinn.com.au	
Coral Sea Resort 1800 075 061 www.coralsearesort.com	
Heart Hotel and Gallery Whitsundays 1300 847 244 www.hearthotelwhitsundays.com.au	
Island Gateway Holiday Park 07 4946 6228 www.islandgateway.com.au	
Kipara Tropical Rainforest Retreat 07 4946 6483 www.kipara.com.au	
Magnums Airlie Beach 1800 624 634 www.magnums.com.au	
Mantra Boathouse Apartments 1300 987 604 www.mantra.com.au/boathouse	
Mirage Whitsundays 1300 088 988 www.miragewhitsundays.com.au	
Nomads Backpackers 07 4999 6600 nomadsworld.com/hostels/australia/airlie-beach/nomads-airlie-beach	
One Ocean View 0418 744 852 www.oneoceanview.com.au	
Peppers Airlie Beach 07 4962 5100 www.peppersairliebeach.com.au	
Pinnacles Resort 07 4948 4800 www.pinnaclesresort.com.au	

Sea Star Apartments 07 4948 1188 www.seastarapartments.com.au	
Seabreeze Tourist Park 07 4946 6379 www.seabreezepark.com.au	
Shingley Beach Resort 07 4948 8300 www.shingleybeachresort.com	
Toscana Village Resort 07 4946 4455 www.toscanaresort.com	
Whitsundays Rainforest Retreat 0414 869 289 www.whitsundaysrainforestretreat.com	
Whitsunday Waterfront Apartments 07 4946 6860 www.whitsundaywaterfront.com	

Weddings

Airlie Day Spa 07 4946 6543 www.airliedayspa.com.au	
Brooke Miles Photography 0419 941 162 www.brookemiles.com.au	
Figurehead Hair Salon 07 4948 2482 www.figureheadhairsalon.com.au	
Le Sorelle Coffee House and Florist 07 4786 1206 www.lesorellecoffeehouse.com.au	
Lure, Abell Point Murrina 07 4946 2407 www.lurewhitsundays.com	
The Palm House @ BIG4 Adventure Whitsunday Resort 07 4948 5400 www.thepalmhouse.com.au	
The Wedding Planners Whitsundays 07 4946 1575 www.theweddingplannerswhitsundays.com	
Total Weddings 07 4946 4540 www.totalweddings.com.au	
Villa Botanica/Botanica Weddings 1800 795 990 www.botanicaweddings.com	
WeddingWhitsundays.com www.weddingswhitsundays.com	

Services

8 Seconds Pty Ltd 07 4948 0398 www.8seconds.com.au	
Adelyn Retail Consultancy 07 4948 3133	
Airlie Beach Legal 07 4946 1442	
Airlie Beach Music Centre 07 4946 4433 www.beachmusic.com.au	
All Marine Services 07 4946 5411 www.allmarineservices.net.au	
Angel Signs 07 4948 3700 www.angelsigns.net.au	
Archers Soft Drinks 07 4945 2991	
Archers – The Strata Professionals 07 4946 3000 www.abcm.com.au	
Bendigo Bank Cannonvale - Proserpine 07 4948 3599 www.bendigobank.com.au/public/community/our-branches/cannonvale-proserpine	
Compass Business Advisory 0401 453 244 www.compass-businessadvisory.com	
Eclipse Financial Services 07 4946 7359 www.eclipsefs.com	
Embroidery In Stitches 07 4948 0400 www.embroideryinstitches.com.au	
Fraser Ford 07 4945 9111 www.fraserford.com.au	
Graphic House 07 4948 3274 www.graphichouse.com.au	
HD - Xposure 0439 711 233 www.hd-xposure.com.au	
interactivink 07 3334 8000 www.interactivink.com.au	
Island Photos 0404 101 212 www.islandphotos.com.au	
KB Design 07 4946 7767 www.kbdesign.net.au	
Kerry Sea Designs 0417 687 053 www.kerryseadesigns.com.au	
Killer Signs 07 4948 1728 www.killersigns.net.au	

Leader Group 07 4946 7377 www.leadergroup.net.au	
Lion Nathan 1800 308 388 www.lionco.com	
Macrossan & Amiet 07 4948 4500 www.macamiet.com.au	
Massage Me Now 1300 322 228 www.massagemenow.com	
Media Whitsunday 07 4946 1594 www.mediawhitsunday.com.au	
Paradise Outdoor Advertising 07 4758 4600 www.paradiseoutdoor.com.au	
Party Cakes Whitsunday 0407 165 827 www.partycakeswhitsunday.com	
Probis Advisory 07 5501 5045 www.probisadvisory.com.au	
Proserpine Chamber of Commerce 0414 204 532	
Ray White Whitsunday 07 4948 8500 www.raywhitewhatsunday.com.au	
Reef Catchments 07 4968 4200 www.reefcatchments.com.au	
Response Learning North Queensland 07 3357 4400 www.responseaust.com.au	
Shirtfront Solutions 07 4948 3533 www.shirtfront.com.au	
Skal Whitsundays 07 4946 7267 www.whitsundays.skal.org.au	
Southern Cross Austereo 07 4953 2033 www.southerncrossaustereo.com.au	
TAFE Queensland North 07 4940 2755 www.tafenorth.edu.au	
TeePee Events 0481 396 098 www.teepeeventswhitsunday.com	
Telltale Communications 0422 617 442 www.airliebeachmap.com	
Tropix Photography 07 4946 6639 www.tropix.com.au	
WASP NQ 0428 829 483 www.waspnq.com.au	
Whitsunday Coast Guardian 07 4940 2107	
The Whitsundays Arts and Cultural Centre 07 4946 4444 www.thewacc.com.au	
Whitsunday Coast Chamber of Commerce www.whitsundaycoastchamber.com.au	
Whitsunday Crisis and Counselling Service Inc 07 4946 2999 www.whitsundayccs.com.au	
Whitsunday Law 07 4948 7000 www.whitsundaylaw.com.au	
Whitsunday Sailing Club 07 4946 6138 www.whitsundaysailingclub.com.au	
Whitsunday Sportspark 07 4946 7359 www.whitsundaysportspark.com.au	
Whitsunday Times 07 4940 2107 www.whitsundaytimes.com.au	
Whitsunday Training 07 4946 5870 www.whitsundaytraining.com.au	

Community

Rotary Club of Airlie Beach 0408 461 192 www.rotaryairliebeach.com/rcab	
VMR Whitsunday 07 4946 7207	
Volunteer Cruise Ship Ambassadors 0400 985 760 www.airliebeachambassadors.wordpress.com	
Whitsunday Running Club 0404 726 189 www.whitsundayrunningclub.com.au	
Zonta Club of Whitsundays 0418 768 493 www.zontaclubofwhitsundays.org	

Out of Region

Billabong Sanctuary 07 4778 8344 www.billabongsanctuary.com.au	
Yongala Dive 07 4783 1519 www.yongaladive.com.au	