



*Hamilton Island*  
**BUSINESS EVENTS**

[hamiltonisland.com.au/BusinessEvents](http://hamiltonisland.com.au/BusinessEvents)



**HAMILTON ISLAND**  
GREAT BARRIER REEF AUSTRALIA



## WHY MEET ON HAMILTON ISLAND?

Along with its unique island location and variety of accommodation, Hamilton Island has the largest business event facilities in the region, with the ability to cater for 10 to 750 delegates. Offering an idyllic setting for your next conference, product launch, exhibition or incentive, here on Hamilton Island, you'll find:

- / A one-stop destination which makes your planning easy. Purpose-built meeting venues and facilities, all within close proximity, ensure your delegates are always close by whilst also having the freedom to explore an island. Professional staff and a long-standing on-site audiovisual company (AVPartners) will ensure the smooth running of your business event.
- / Unique event venues and facilities including private islands, sandy beaches, poolside marquees, airport hangars, piers and lawns, each with a unique backdrop that is guaranteed to inspire.
- / Signature dinner and cocktail party packages that leave lasting memories of an amazing event. Access to fireworks, bands, entertainers and technicians makes anything possible.
- / An endless choice of inspiring team building and group activities, allowing delegates to get out and explore the island and its surrounding environment, including the Great Barrier Reef and Whitehaven Beach.
- / An activity program designed for family-friendly conferences, allowing children and partners to enjoy the many activities available.
- / Easy access with direct flights from Sydney, Melbourne, Brisbane and Cairns, plus complimentary Hamilton Island airport to accommodation transfers.

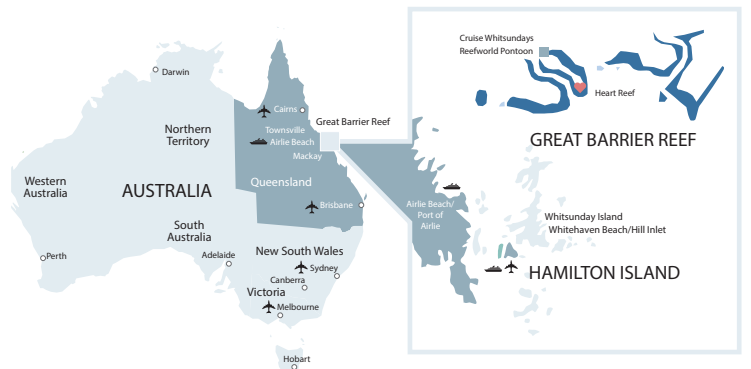
To ensure all the hard work is done for you, a dedicated Event Coordinator is assigned to your group to combine these elements and tailor a program that's guaranteed to be a success. You'll also have your own Groups Reservations Coordinator to assist with your accommodation bookings.



## LOCATION AND ACCESS

Hamilton Island is perfectly located just off the Queensland coast of Australia and in the heart of the Great Barrier Reef. Of the 74 Whitsunday Islands, it is the largest inhabited island, positioned approximately 887km north of Brisbane and 512km south of Cairns (by air).

The only island in the Great Barrier Reef with its own commercial airport, access to Hamilton Island is easy with short, direct flights from Sydney (2 hours), Melbourne (3 hours), Brisbane (90 minutes) and Cairns (70 minutes), plus good connections from other Australian cities. There are also quick 30-minute direct boat transfers from Shute Harbour or Port of Airlie on the mainland.



### Climate

Situated on the same latitude as Honolulu in the northern hemisphere and Mauritius in the south, Hamilton Island enjoys a year-round tropical climate with an average temperature of 27°C.

January	31°C / 87°F	July	22°C / 71°F
February	30°C / 86°F	August	23°C / 73°F
March	29°C / 84°F	September	25°C / 76°F
April	27°C / 80°F	October	28°C / 82°F
May	24°C / 75°F	November	29°C / 84°F
June	22°C / 71°F	December	30°C / 86°F

### Airport Transfers

A return complimentary transfer service is provided from Hamilton Island airport or marina to your hotel accommodation. This transfer service meets all groups with a Hamilton Island representative.

### Private Check-ins

Hamilton Island offers a range of private check-in options, including a beach marquee or at One Tree Hill, with stunning views of the Whitsundays.

### Getting Around

Replacing cars on the island, golf buggies are the main form of transportation. Buggies are available for hire or are provided complimentary for Holiday Home, Yacht Club Villa and qualia guests. Complimentary Island Shuttle transfers operate from 7am to 11pm daily, with private group transfers available at an additional cost. For a great team building activity, why not try our 'Amazing Race' style Buggy Rally!



## CONFERENCE FACILITIES

Hamilton Island boasts the most comprehensive business event facilities in the Whitsundays, catering for 10 to 750 delegates. There are a total of 15 conference rooms, from boardrooms for small meetings, beachfront venues such as the Endeavour Room, through to the purpose-built Conference Centre suitable for large conferences, product launches, exhibitions and incentives. Most are within easy walking distance, meaning breakout sessions are easily accessible.

The Hamilton Island Yacht Club brings a new standard of excellence through its unique spirit and style. Designed by Australian architect Walter Barda, the Hamilton Island Yacht Club provides a business event venue like no other in Australia. Venues include the Ketch room with its stunning floor to ceiling windows and views across the sparkling waters of Dent Passage, along with a state-of-the-art Auditorium. The Yacht Club is the perfect location for conferences of all sizes.



### Conference Room and Dinner Venue Capacities

Room	Length (m)	Width (m)	Height (m)	Area (m2)	Theatre	Boardroom	Cabaret	Classroom	U- Shape	Banquet	Cocktail
Conference Centre Auditorium	38	24	10	912	700	-	560	650	55	700	700
Conference Centre Foyer	14.2	14.6	10	207.32	-	-	-	-	-	-	-
Meeting Rooms 1,2,3,4 (each)	9.5	4.75	2.8	45	40	20	-	25	-	-	-
Meeting Rooms 1&2 or 3&4	19	4.75	2.8	90	80	40	-	50	-	-	-
CC Boardroom	-	-	-	-	-	12	-	-	-	-	-
Endeavour Room	29	15.8	3.6	458	350	-	240	200	-	300	400
Endeavour Room Beach Side	15	15.8	3.6	237	175	36	95	100	40	150	200
Endeavour Room Resort Side	14	15.8	3.6	221	175	36	95	100	40	-	-
Chart Room	19	9.2	2.8	175	80	30	64	60	40	-	-
Main Pool	-	-	-	-	-	-	400	-	-	60	1,000
Catseye Beach	-	-	-	-	-	50	-	-	-	120	400
Bougainvillea Marquee	-	-	-	432	-	-	240	-	-	350	500
Outrigger Marquee	-	-	-	-	-	120	176	80	40	250	350
The Outrigger - Courtyard	16	11.1	-	178	-	120	112	80	40	150	200
The Outrigger - Indoor Area	27	4.9	-	132	-	-	64	-	-	100	150
Hamilton Island Golf Club	-	-	-	-	-	-	-	-	-	80	80
Hamilton Island Jetty	-	-	-	-	-	80	-	-	-	-	80

Yacht Club	Length (m)	Width (m)	Height (m)	Area (m2)	Theatre	Boardroom	Cabaret	Classroom	U- Shape	Banquet	Cocktail
Ketch	-	-	-	159	100	30	48	36	21	70	120
Cutter	-	-	-	126	100	30	48	36	21	60	100
Ketch and Cutter	-	-	-	285	190	60	96	72	36	130	300
Black Coral Boardroom	-	-	-	-	-	12	-	-	-	-	-
Barnacle	-	-	-	106	50	20	40	20	18	50	70
Auditorium	-	-	-	123	67	-	-	67	-	-	-
Private Dining Room	-	-	-	-	60	30	32	24	18	40	70
Boardwalk	-	-	-	-	-	100	-	-	-	100	400
Bommie Deck	-	-	-	211	-	90	-	-	-	100	250
Flag Deck	21	6	-	151	-	-	-	-	-	-	120
Keel Deck	-	-	-	211	-	80	-	-	-	100	250



## GROUP DINING OPTIONS

### Signature Dinners

At Hamilton Island we have started the creative process for you, with a selection of over 18 themed dinner and cocktail party ideas, utilising the best venues the island has to offer.

Our Signature Dinners provide you with a one-stop-shop at a variety of locations around the island, with all-inclusive pricing covering the menu, beverage package, venue hire, set-up fees and basic theming... or we can create a tailor-made package just for your group.

With themes including Barefoot and Bubbles on the Beach, Night of the Stars, Dinner on the Dock, the Marina Village Street Parade and our popular Watersedge Extravaganza, there is sure to be a theme to excite and delight your guests.

Venues available include beaches and permanent marquees, as well as docks and private pool areas, all providing remarkable backdrops with stunning sunsets and ocean views. You can even have your own private island for a night with the Hamilton Island Golf Club located on neighbouring Dent Island.

The Hamilton Island Yacht Club boasts some of the island's most spectacular views over the marina and Dent Passage. Why not watch the sunset with pre-dinner drinks and canapés from the *Bommie* or *Flag Deck*, before sitting down to a magnificent dinner on the boardwalk overlooking the marina.



## RESTAURANTS AND CAFÉS

If your group would prefer to dine at leisure, choose from almost as many restaurants as you'd expect to find on the mainland.

- Bommie** – fine dining at the Hamilton Island Yacht Club
- The Clubhouse** – lunch with a view at the Hamilton Island Golf Club
- coca chu** – modern South East Asian, mixing bold flavours with elegant style
- Hamilton Star Cruise and Dine** – afternoon and dinner cruise through the Whitsundays
- Manta Ray** – casual Mediterranean-style dining on the waterfront and gourmet pizzas
- Marina Café** – all day breakfast, snacks and great coffee by the marina
- Marina Tavern** – casual pub-style dining
- Mariners** – stunning marina views and a fresh seafood menu
- One Tree Hill** – light snacks and refreshments overlooking Passage Peak and beyond
- Pool Terrace** – breakfast, lunch and dinner overlooking the Reef View Hotel pool
- Romano's** – innovative Italian fare by the marina
- Sails** – the hub of Hamilton Island with casual dining overlooking Catseye Beach
- TAKO** – authentic Mexican street food with a Japanese twist
- WILD LIFE Hamilton Island Café** – breakfast with the koalas and light snacks

### Takeaway Outlets and Bars

Bob's Bakery / Bommie Deck / Bougainvillea Bar / Garden Bar / Ice Cream Parlour / Island Bar / Manta Ray / Marina Café / Marina Tavern / One Tree Hill / Popeye's Fish & Chips / Reef Lounge / Verandah Bar at Sails

### IGA Supermarket and Bottle Shop

You will find a wide variety of produce at the IGA located on Front Street in the Marina.



Whether it be on land, in the air or on water, Hamilton Island has an endless array of group activities to suit all budgets, group sizes and demographics. Make it an event to remember by treating your delegates to a specially-designed experience that is guaranteed to inspire.

If the motivation of being on a beautiful tropical island is not enough, Hamilton Island has activity ideas that promote teamwork and interaction, including Survivor Challenge, Beach Olympics and more. One of the most popular activities is the Buggy Rally – an 'Amazing Race' style adventure where guests drive their own golf buggy around the island searching for clues!

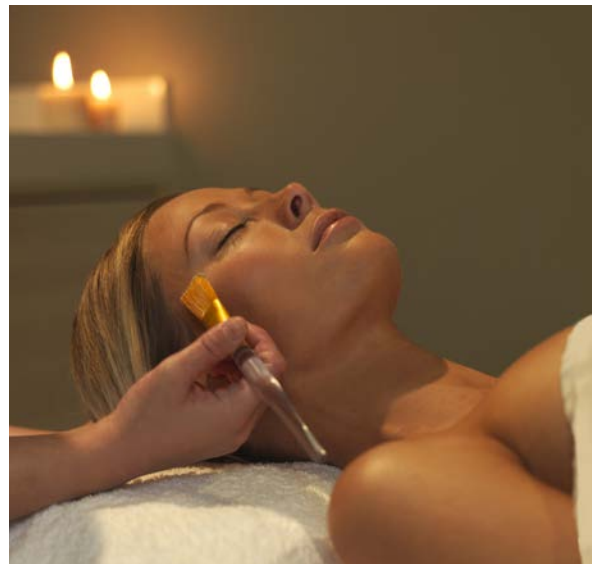
### Hamilton Island Golf Club

18-hole, par 71 championship course, measuring 6,120 metres / Designed by five-time British Open winner Peter Thomson to challenge all levels of golf enthusiasts / The only golf course on its own island in Australia / Practice putting and chipping greens and golf tuition with the resident Golf Pro / Clubhouse with a restaurant, bar and pro shop / Located on neighbouring Dent Island, access is via a short boat transfer from the Hamilton Island Marina (beside Manta Ray) / Green fees include return boat transfers and use of a two-seater golf buggy on-course

Hamilton Island Golf Club can be incorporated into your program, whether it be as part of an afternoon at leisure or a sole-use Ambrose-style golf tournament. The resident Golf Pro can organise group clinics, 'Play the Pro' and many other team building activities.

### Spa wumurdaylin

Spa wumurdaylin's warm and relaxed approach provides a divine relaxation haven, inviting you to indulge in a complete sensory experience. The highly skilled therapists provide treatments rich in aromaceuticals by Waterlily, plus massages, scrubs, rituals and facial therapies. With six treatment rooms, Spa wumurdaylin is the perfect indulgent activity option for your delegates and is available for group bookings.



## OVER 60 OTHER ACTIVITIES

(sole use options available)

Hamilton Island has more than 60 activities to choose from, with something to suit every interest and energy level.

**Land** Hamilton Island Golf Club / Bushwalking – over 20km of trails / WILD LIFE Hamilton Island / Sunset cocktails at One Tree Hill / Go-karts / Golf driving range / Mini golf / Climbing wall / Games arcade / Spa wumurdaylin / Art classes / Sports club and gym / Tennis / Off Road Adventure Tours / Kids quads / Island Bowling / Audio Tours / Retail outlets / Clownfish Club kids club / Kids Fun Zone / Laser tag

**Air** Helicopter, fixed wing and seaplane flights available over the Whitsundays, Whitehaven Beach, the Great Barrier Reef and Heart Reef / Parasailing

**Water** Full day trips to the Great Barrier Reef / Full and half day trips to Whitehaven Beach / Sailing – bareboat and chartered / Whitsunday Islands and Great Barrier Reef Dive and Snorkel tours / Twilight and dinner cruises / High-speed jet boat rides / Tube rides / Parasailing / Sea kayaking / Game fishing / Dinghy hire / Jetski tours / Whale watching (Jul–Sept) / Various island pools / Scuba diving / Wakeboarding and water-skiing / Catamarans / Windsurfing / Kayaks / Snorkelling / Stand up paddleboards / PADI open water learn to dive / Turtle discovery tour



## ACCOMMODATION OPTIONS

### Reef View Hotel – spacious hotel style

The Reef View Hotel features extremely spacious, well-appointed rooms all with private balconies overlooking either landscaped gardens or the breathtaking vista of the Coral Sea. The upper-most floors boast 18 luxuriously appointed suites. All rooms face the Coral Sea complete with outdoor furniture to experience the spectacular sunrises. Additional Reef View Hotel facilities include a business centre, restaurant, bar, tour desk and pool.

<b>Garden View room</b> (floors 1–4)	<b>Bedding configuration</b> 2 x queen beds, max capacity 4 people
<b>Coral Sea View room</b> (floors 5–18)	<b>Bedding configuration</b> 1 x king bed or 2 x queen beds, max capacity 4 people
<b>King Coral Sea View room</b> (floors 13–18)	<b>Bedding configuration</b> 1 x king bed, max capacity 2 people
<b>Reef Family room</b>	<b>Bedding configuration</b> main room – 2 x queen beds, adjoining junior room – 2 x single beds, max room capacity 6 people (2 adults, 4 children under 12 years)
<b>Reef Suites</b> (floor 19)	<b>Bedding configuration</b> 1 x king bed or 2 x queen beds, max capacity 2 people (1 and 2 bedroom Terrace Suites and Presidential Suite also available with spas and plunge pools)

**The Reef View Hotel has the following inclusions** Return Hamilton Island airport/marina to hotel transfers / Use of catamarans, windsurfers, kayaks, paddle boards and snorkelling equipment / Use of the gym, spa, sauna and tennis courts / Unlimited use of the scheduled ‘Island Shuttle’ service / Free WiFi



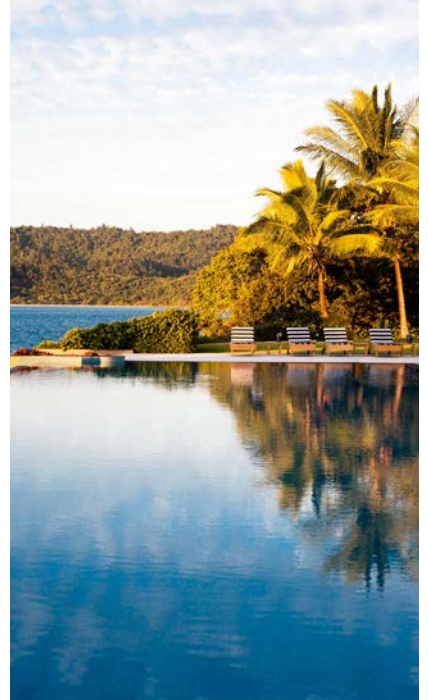
### Beach Club – boutique

With its absolute beachfront location, the adults only Beach Club offers the ultimate island holiday experience, perfect for executive retreats, incentive groups or VIP’s. Set in landscaped gardens, all 57 rooms face directly onto Catseye Beach, each with their own private courtyard or balcony.

<b>Beach Club room</b> Intimate beachfront accommodation	<b>Bedding configuration</b> 1 x king bed or twin on request, max room capacity 2 people
--	--

**Exclusive inclusions** A la carte breakfast daily at the Beach Club restaurant / VIP return Hamilton Island airport/marina to Beach Club transfers / VIP chauffeur service / Use of catamarans, windsurfers, kayaks, paddle boards and snorkelling equipment / Use of the gym, spa, sauna and tennis courts / Exclusive use of the Beach Club lounge and infinity-edge pool / Free WiFi

*Note: Beach Club does not cater for persons under the age of 18 years. Minimum night stay applicable. Sole use available.*



## ACCOMMODATION OPTIONS

### qualia – premium luxury

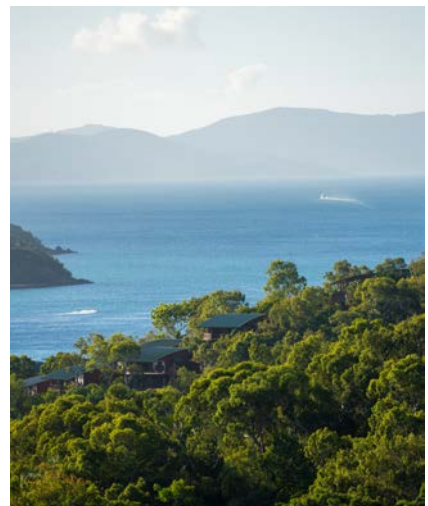
qualia is a unique Australian expression of world-class luxury, situated on the secluded northern-most tip of Hamilton Island. Inside, feel time unravel in one of 60 exquisitely appointed pavilions that sit in perfect harmony with the rare, natural beauty of the island. Exclusive guest facilities include a private beach, two infinity-edge pools and two restaurants. Or for a truly memorable experience, step inside Spa qualia which offers an extensive range of luxurious treatments.

qualia is the ultimate incentive destination and provides the perfect reward for your top achievers.

<b>Leeward Pavilion</b> Studio style with large sundeck	<b>Bedding configuration</b> 1 x king bed or twin beds on request, max capacity 2 people
<b>Windward Pavilion</b> 1 bedroom with private plunge pool	<b>Bedding configuration</b> 1 x king bed or twin beds on request, max capacity 2 people
<b>Beach House</b> 1 bedroom with private lap pool and separate guest pavilion	<b>Bedding configuration</b> 2 x king beds or twin beds on request, max capacity 4 people

**Exclusive inclusions** VIP chauffeur service / 1 x golf buggy for duration of stay / VIP return Hamilton Island airport/marina to qualia transfers / Turndown service / Use of the qualia catamarans and island paddle boards, windsurfers, kayaks and snorkelling equipment / Access to exclusive guest facilities including two pools, two restaurants, gymnasium, library, business centre and Spa qualia / Private plunge pool (Windward Pavilions only) / Free WiFi

*Note: qualia does not cater for persons under the age of 16 years. Minimum night stay applicable. Bookings of 15 or more pavilions require sole use of the resort.*



### Yacht Club Villas – luxury self-catering

Adjacent to the Hamilton Island Yacht Club, the luxury waterfront Yacht Club Villas offer breathtaking sea views over Dent Passage. With a design emphasis on privacy and space, each villa spans three to four levels according to position and can accommodate up to eight guests. Designed by renowned Australian architect Walter Borda, the four bedroom, four bathroom villas offer a tranquil serenity, located alongside the 301-berth Hamilton Island Marina, within easy reach to all the island has to offer. Free WiFi is available at select locations across the island. The perfect accommodation option for executive retreats.

### Hamilton Island Holiday Homes – perfect for families

Hamilton Island offers a range of privately owned self-catering Holiday Homes which are scattered throughout the island. These can accommodate one to 8 people in one to four bedroom configurations across Resortsides, Standard, Superior and Deluxe categories. The layout, appearance and surroundings of each varies, however each has a fully-equipped kitchen and laundry and all share landscaped gardens and swimming pools and include use of a four-seater golf buggy. Free WiFi is available at select locations across the island.

*Note: Four night minimum stay applies for Yacht Club Villas and three nights for Hamilton Island Holiday Homes.*



## HAMILTON ISLAND MAP

### MARINA VILLAGE

- |                                    |   |
|------------------------------------|---|
| 1 Romano's Italian restaurant      | 13 Pharmacy   |
| 2 Mariners restaurant              | 14 Trader Pete's                                    |
| 3 Manta Ray                        | 15 Hamilton Island Yacht Club and Bommie restaurant |
| 4 Marina Tavern                    | 16 Hamilton Island Golf Club Island Links Ferry     |
| 5 Marina Café                      | 17 Yacht Club Villas                                |
| 6 TAKO                             | 18 Hesperus lawn                                    |
| 7 Bob's Bakery                     | 19 Explore jetty                                    |
| 8 Popeye's Fish & Chips            | 20 Cruise Whitsundays jetty                         |
| 9 Ice Cream Parlour                | 21 Hamilton Island / Dinner on the Dock jetty       |
| 10 Retail shops                    |   |
| 11 Post Office                     |   |
| 12 IGA Supermarket and Bottle Shop |   |



### CATSEYE BEACH

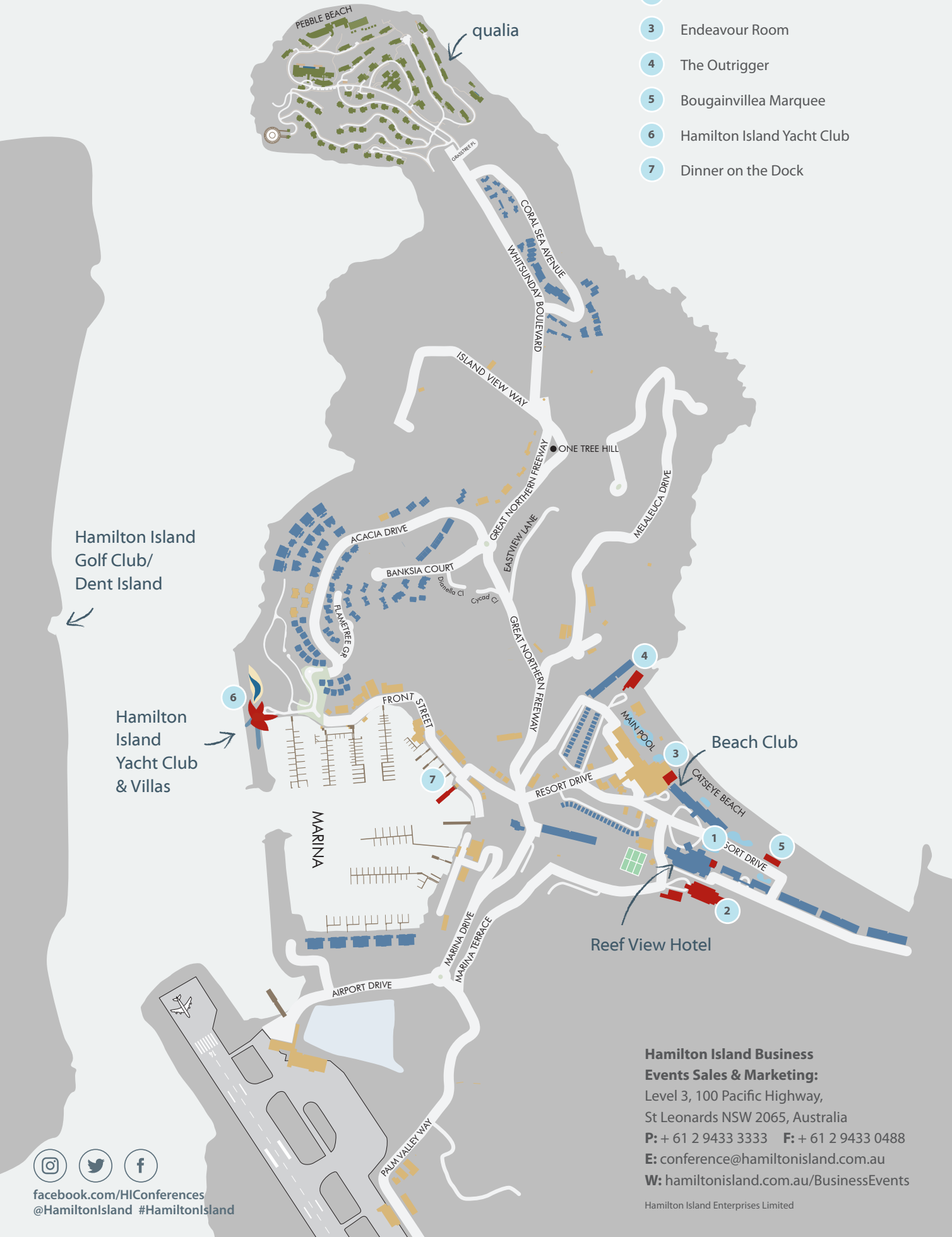
- |                               |                              |
|-------------------------------|------------------------------|
| 1 Beach Club                  | 14 Clownfish Club            |
| 2 Reef View Hotel             | 15 WILD LIFE Hamilton Island |
| 3 Pool Terrace restaurant     | 16 Beach Sports Hut          |
| 4 Palm Bungalows              | 17 Bougainvillea Marquee     |
| 5 Bougainvillea Pool and Bar  | 18 Westpac Bank / ATM        |
| 6 Main Pool and Island Bar    | 19 coca chu                  |
| 7 Dolphin Pool                | 20 Endeavour Room            |
| 8 Sails and Verandah Bar      | 21 Outrigger Marquee         |
| 9 Spa wumurdaylin             | 22 Chart Room                |
| 10 Resortside Holiday Homes   | 23 Buggy Hire                |
| 11 Tour Desk and retail shops |                              |
| 12 Conference Centre          |                              |
| 13 Kegel 9-pin bowling alley  |                              |





# BUSINESS EVENT FACILITIES MAP

- 1 Chart Room
- 2 Conference Centre
- 3 Endeavour Room
- 4 The Outrigger
- 5 Bougainvillea Marquee
- 6 Hamilton Island Yacht Club
- 7 Dinner on the Dock



Hamilton Island Golf Club/ Dent Island

Hamilton Island Yacht Club & Villas

Beach Club

Reef View Hotel

**Hamilton Island Business Events Sales & Marketing:**  
 Level 3, 100 Pacific Highway,  
 St Leonards NSW 2065, Australia  
**P:** + 61 2 9433 3333 **F:** + 61 2 9433 0488  
**E:** conference@hamiltonisland.com.au  
**W:** hamiltonisland.com.au/BusinessEvents



facebook.com/HIConferences  
 @HamiltonIsland #HamiltonIsland

Hamilton Island Enterprises Limited