

OFFICIAL VISITOR GUIDE

East Gippsland

Bairnsdale | Metung | Paynesville | Lakes Entrance | Bemm River
Bruthen | Buchan | Lindenow | Omeo | Orbost | Mallacoota




EAST GIPPSLAND
Naturally Magic



G.J. Gardner.
HOMES



Your Local Builders

Building your new home with a local team you can get to know personally is surprisingly easy. **Come in and visit us to find out more.**

Contact G.J. Gardner Homes East Gippsland on **(03) 5153 1330** or visit our office **89 Main St, Bairnsdale.**

gjgardner.com.au



Building East Gippsland.
Your trusted local.

Ellett Concepts Pty Ltd, CDB-U 53249.
Business name G.J. Gardner Homes East Gippsland.

Enjoy a fire safe summer

In the summer months there's no better place to be than down the coast or in some of our stunning bush or grassland areas. Wind down and enjoy a fun and relaxing summer knowing you've taken a few simple steps to stay fire safe.



Away from home checklist

Five things to do every time you're out and about.

1. Save the Victorian Bushfire Information line (1800 240 667) in your mobile.
2. Know the most up-to-date Fire Danger Ratings for the area you're traveling to.
3. Find out if a Total Fire Ban has been declared.
4. Listen to ABC local radio (or other emergency broadcaster).
5. Check or download the FireReady app on your smartphone.

FireReady App



Get the latest fire information and warnings direct to your smartphone or iPad. Set the app to notify you when an incident occurs in a chosen area and use it to stay up-to-date with local Fire Danger Ratings and Total Fire Bans.

Download the app free from cfa.vic.gov.au

Contents

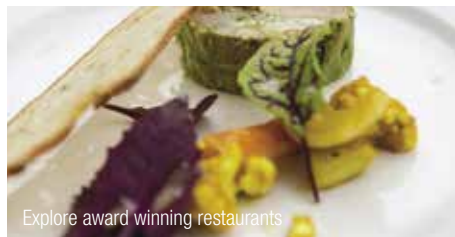
Tambo Crossing

- 4 | Explore, Taste & Tour**
- 5 | Nature, Wilderness & Adventure**
- 6 | The Gippsland Lakes**
 - 10 Places to stay, wine & dine
 - 17 Things to see & do
- 14 | Map**
- 20 | The High Country**
 - 22 Places to stay, wine & dine
- 23 | Snowy River Country**
 - 25 Places to stay, wine, dine & discover
- 28 | The Coastal Wilderness**
 - 31 Places to stay, wine & dine

Do as little or as much as you like during your holiday in East Gippsland. Our helpful Visitor Information Centres have all the information you need, so choosing how to spend your time may be the toughest decision you make. But if you can't get everything done, you can always return. Our magical piece of paradise will still be here.

Anything is possible in East Gippsland. Fish a mountain stream or bait up on a lakeside jetty. Steer your boat across pristine waters of the lakes or water-ski behind it. The watersports, hiking, biking, snow skiing or caving will keep you entertained for days. Ride a horse across the High Country or watch horses in Campdrafts or Rodeos. No other region of Victoria can offer such great coastal and mountain pursuits.

Explore, Taste & Tour



Satisfy your wanderlust in East Gippsland. There are so many roads to travel, so many boating adventures to take, so many delicious flavours to discover.

Whether it is a sailing adventure or fishing charter on the lakes or offshore, a horseback trail ride, winery or a cycling trip, there is plenty to see and do.

Charter a yacht or a motorboat to explore the rivers and the Gippsland Lakes or join an organised cruise.

Enjoy an offshore fishing adventure with an experienced local fisherman and fish for marlin, mako shark, gummy shark, swordfish, whiting, snapper, flathead, mulloway, salmon and trevally or head underground with an experienced guide to explore the world famous Buchan Caves.

Discover the history of our traditional owners by taking a self-guided tour of

important indigenous sites or pedal your way through forests and farmland along the East Gippsland Rail Trail and Lakes Discovery Trail.

Learn about our traditional Indigenous art and heritage at the Krowathunkooloong Keeping Place in Bairnsdale.

For guaranteed wildlife spotting, take the ferry to Raymond Island and follow the koala trail or enjoy a hit of golf amongst the resident Kangaroos at the Mallacoota Golf Course. Explore an Art Trail or, why not experience the soul of East Gippsland through a cultural or regional event.

East Gippsland is home to award winning cafes, eateries, wineries and breweries just waiting to be explored by the food enthusiast.

Source freshly caught seafood at local fish shops or directly from trawlers. Take the Twin Rivers farmgate tour and enjoy micro-brewed ale, fresh berries and mouthwatering stone fruits.

Look for the 'Eat, Drink, Local' symbol on our restaurants, cafes and retailers to enjoy locally sourced produce.



Nature, Wilderness & Adventure



Cruising the Mallacoota Inlet

Talk about being spoilt for choice! In East Gippsland, eleven world-class, easily accessible National, Coastal and Marine Parks and Reserves are here for you to explore.

From the remote wilderness of the UNESCO-recognised Croajingolong National Park in the east, to the rugged beauty of the Snowy River and Alpine National Parks and the vast expanse of the Lakes National Park fringed by lakes and dunes, East Gippsland is rich in natural attractions.

Alpine National Park

Covering over 6000 sq km's of Victoria's high country, this is East Gippsland's highest and largest National Park. It showcases pristine mountain environments and rivers, lush bush and eucalypts and spectacular scenery.

Croajingolong National Park

As part of Australia's Wilderness Coast, the Croajingolong National Park follows the far-eastern coastline of Victoria for 100 kilometres and covers 87,500 hectares. The Park is a UNESCO World Biosphere Reserve that cocoons and protects remote beaches, tall forests, heathland, rainforest, estuaries and granite peaks.

Gippsland Lakes Coastal Park

A water based environment set on a narrow coastal reserve, stretching from Seaspray to Lakes Entrance along the Ninety Mile Beach. With the eastern parts accessible only by boat, unique opportunities exist to experience bird and marine life at close proximity.

Snowy River National Park

Synonymous with adventure and nature, the remote wilderness area is a must to explore. It features some magnificent river scenery, spectacular deep gorges, eucalypt forests and rain shadow woodlands. You can reach this park via Buchan or Orbost.

Be inspired today, visit www.visiteastgippsland.com.au/things-to-see-a-do/our-parks-and-wilderness

Adventure

East Gippsland has world-class mountain bike trails, endless kayaking and canoeing opportunities and spectacular trail runs, all designed for the adventure athlete.

Look out for regular adventure events or take a guided tour in and around the Gippsland Lakes, or on one of our many rivers.



Enjoy a break along the Rail Trail

The Gippsland Lakes



Offshore fishing



East Gippsland Rail Trail



Lakes Entrance

Australia's largest inland waterway, the Gippsland Lakes, are a network of lakes, marshes and lagoons covering 400sq km, and are separated from the ocean with coastal dunes known as Ninety Mile Beach. Bird and marine life thrive here, with the Burrunan dolphins and pelicans frequenting many locations.

The Mitchell River Silt Jetties are a geographical highlight now claimed as the longest in the world. Drive along the silt jetty out into Lake King with the Mitchell River on one side and lake on the other.

The Lakes are best seen from the water, but can be visited from the shore, using one of four lakeside villages as a base. Hire a boat here, or bring your own, these incredible waterways offer so much, with 40 casual jetties and top amenities on offer. Three coastal parks stand between the lakes and the ocean. This magnificent coastline is just 10 minutes by fast boat from any lakeside village.

While most people visit for the boating and fishing, you can sail, swim, canoe, kayak or relax and take in the energy from the picturesque lakeside towns of Lakes Entrance, Metung, Raymond Island and Paynesville. The region's commercial centre, Bairnsdale, is known as the 'gateway to the lakes', Lindenow is home to the regional food bowl; while the 'Twin Rivers' area comprises the towns of Nicholson, Johnsonville and Swan Reach and is known for its bream fishing on both the Tambo and Nicholson Rivers.

Fish, golf, tour or simply slow down
– the Gippsland Lakes will captivate you.



Explore our towns & villages

Bairnsdale

A thriving provincial centre, Bairnsdale is the commercial hub of East Gippsland and gateway to the natural beauties of our region. The town's rich heritage can be found throughout the town including the Mitchell River walking trail, the All Abilities Playground and the spectacular frescoes and architecture of St Mary's Church.

Bruthen

Oozing country charm and historical character, this village is a perfect place from which to set off on the Twin Rivers Farm Food and Wine Trail or enjoy the outdoors on the East Gippsland Rail Trail and end it with a visit to the Bullant Brewery.

Metung

The tranquil village of Metung has long been a favourite for holiday-makers. While the main activities involve boating and fishing, Metung is also known for its scenic walks, great local food, monthly farmers' market and unique galleries with a coastal flair.



Metung Splash Park

Lakes Entrance

A premier holiday destination, Lakes Entrance is loved for its beaches, foreshore carnival over summer, waterfront cafes and fleet of colourful fishing boats. Join a guided boat tour, admire the view from Kalimna Lookout or stroll across the footbridge from the foreshore to see the vast expanse of Ninety Mile Beach.

Lake Tyers Beach

Lake Tyers Beach is a great place to relax or enjoy the outdoors. Surf at the region's most renowned surfing spot, Red Bluff, catch your share of the plentiful supplies of prawns, crabs, flathead and bream or dine at the Waterwheel Beach Tavern.

Lindenow

Bordering the Mitchell River National Park, and overlooking some of the most productive agricultural land in Victoria, Lindenow is a quaint village, offering the best in country hospitality and deliciously fresh local produce.

Paynesville & Raymond Island

Known as the boating capital of Victoria, Paynesville is a great place for those just looking for a getaway by the water or to enjoy activities on and around the foreshore. Explore the lakes and canals or take the short ferry trip to Raymond Island to see koalas.



Sunset on Lake King Beach

Nicholson, Johnsonville & Swan Reach

Located in the beautiful Twin Rivers district, Nicholson boasts a spectacular historical railway bridge and access to the renowned Rail Trail. Visit one of the local wineries, hire a boat in Johnsonville or fish for your dinner. Enjoy the picturesque scenery of Swan Reach or choose from a selection of dining and cuisine options overlooking the rivers.

To find out more about our unique towns and villages, visit us at www.visiteastgippsland.com.au/regions/gippsland-lakes or call one of our Visitor Information Centres on 1800 637 060



Local Markets

Bairnsdale Farmers Market Secondary College Oval, McKean Street Bairnsdale
1st Saturday of month 8am-12pm

Bairnsdale Makers Market (Indoor, handmade) Boucher Hall, Bairnsdale Secondary Collage
1st Saturday of March, June, September and December

Bruthen Village Market (Make It, Bake It, Recycle It) Bruthen Mechanics Hall, Main St Bruthen
3rd Saturday of month 9am-1pm

Metung Farmers Market Village Green, Metung
2nd Saturday of month 8:30am-1pm

Paynesville Lions Club Market Gilsenan Reserve, Paynesville
2nd Sunday of month 8am-1pm

Paynesville Farmers Market 55 Raymond Street, Paynesville
4th Saturday of each month from 8.30am

Sunrise Rotary Market Howitt Park, Lucknow
4th Sunday of month 8:30-1pm

Surf Club Market Foreshore Rotunda, (near the Footbridge) Lakes Entrance
1st Sunday of month 9am-3pm

10 great places to explore through the Gippsland Lakes

- 01** Dine at one of our many restaurants or enjoy a top-notch drop from an award-winning winery.
- 02** Look for fur seals and dolphins frolicking in the surf from one of the longest stretches of sand in the Ninety Mile Beach.
- 03** Regular Farmers' markets, entertainment and more mean something is always happening.
- 04** East Gippsland boasts an exciting range of cycling activities including the historic Rail Trail and Mountain Bike Parks.
- 05** Pitch a tent on the tranquil Bunga Arm or at one of the many caravan and campsites around the Gippsland Lakes.
- 06** The Bataluk Cultural Trail will give you a new perspective on the landscapes of East Gippsland.
- 07** Be guided by boat, hire your own or take to the water in a kayak, canoe or paddle board to explore the Gippsland Lakes and rivers.
- 08** Make it all about the kids with mini-golf, archery, bike hire, paddle boats, and locally produced ice cream among the many attractions.
- 09** Visit the Mitchell River Silt Jetties, now claimed as the longest in the world.
- 10** Take a leisurely walk around the old Nyerimilang homestead and enjoy a picnic lunch in the picturesque gardens.

For more inspiration, contact our Visitor Information Centre on 1800 637 060 or visit www.visiteastgippsland.com.au/things-to-see-a-do



Lakes Entrance foot bridge



KING & HEATH FIRST NATIONAL

Bairnsdale - 125 Main Street, Bairnsdale T: 03 5152 3311
 Paynesville - 63 The Esplanade, Paynesville T: 03 5156 6766
 Lakes Entrance - 591 Esplanade, Lakes Entrance T: 03 5155 1201
 Metung - 59-61 Metung Road, Metung T: 03 5156 2372
www.kingheath.com.au

Nobody knows East Gippsland like our team at King & Heath First National.

With over 90 years of market knowledge and local experience we understand your journey and have been trusted since 1923.

Open 7 days a week.

Places to Stay, Wine & Dine



The Gippsland Lakes



BULLANT BREWERY

46 Main Street, Bruthen VIC 3885
T: 03 5157 5307
E: enquiries@bullantbrewery.com
www.bullantbrewery.com



Renowned for our fine range of craft beers and excellent meals, the Brewery situated in the village of Bruthen, provides a beautiful setting which allows you to dine indoors or outside on the expansive deck overlooking the Tambo Valley. An ideal stop when riding the Rail Trail or just travelling through. Each of our beers are matched to the menu or they are equally enjoyable as a solely refreshing beverage. The copper brewhouse can be viewed through large windows, so sit, sip and ponder the wonders of beer making. Open Wednesday to Sunday. Closed Good Friday and Christmas Day. We invite you to visit and experience the Bullant Brewery – the home of ‘beer with bite’.



NRMA BAIRNSDALE RIVERSIDE HOLIDAY PARK

2 Main Street Bairnsdale VIC 3875
T: 03 5152 4654
www.nrmaparksandresorts.com.au/bairnsdale



Choose from a range of accommodation including self-contained one and two-bedroom cabins, holiday units as well as large grassy sites suitable for caravans, campervans and camping. Guests have access to excellent facilities from a camp kitchen, sheltered BBQ areas, swimming pool and children's swing set to free wifi.



NRMA EASTERN BEACH HOLIDAY PARK

42 Eastern Beach Rd Lakes Entrance VIC 3909
T: 1800 761 762
www.nrmaparksandresorts.com.au/easternbeach



Choose from a range of accommodation including self-contained deluxe and water view two-bedroom villas as well as ensuite, powered and unpowered sites. Guests have access to excellent facilities from kids' playground, bouncing pillow, BBQ areas, TV and games room, kayak and peddle cart hire to free wifi.



EAGLE POINT CARAVAN PARK

40 School Road Eagle Point VIC 3878
T: 03 5156 1183
E: eaglepointcp@egipps.vic.gov.au



Eagle Point Caravan Park is ideally located next to a nature reserve in the Gippsland Lakes, where you can peacefully sit back and enjoy the magnificent lake and bush surrounds. Facilities include a General store and licensed bottle shop, fully equipped campers' kitchen, BBQs and Children's play area with Games room.



FUNKEY MONKEY CAFÉ

26 Myer Street Lakes Entrance VIC 3909

T: 03 5155 2418

E: funkeymonkey@gmail.com



Winner of the AGFG 2019 Readers Choice Awards and located in Myer Street, less than a five minute walk from the footbridge and 90 mile beach, linger over sumptuous at Funkey Monkey café.

Pop inside this locally-loved cafe to grab a coffee, or freshly squeezed juice from friendly staff; perhaps cosy up on a couch for longer visits and enjoy a retro theme of spritely red and white decor.

Sophisticated culinary techniques are used to create a range of classically simple cafe meals, adding an element of refinery to a menu with options like brioche French toast, with grilled banana, lemon curd, mascarpone and freeze dried fruit; or delve into a fried chicken waffle, with coriander, Vietnamese mint, fried shallots, chilli and Tonkatsu sauce, alongside an extensive range of artfully presented cakes, slices and temptingly sweet pastries.



LAKES BEACHFRONT HOLIDAY PARK

430 Lake Tyers Beach Road,
Lake Tyers Beach VIC 3909
T: 03 5156 5582 or 1300 1parks
E: lakesbeachfront@holidayretreats.com.au
www.lakesbeachfront.com.au



Just a few steps out our back gate explore the 90 Mile Beach. In a secluded bush setting choose a Shelly Beach villa, cabin or powered or bush camping site. Fantastic resort pool, jumping pillow, kids club, playground, games room, communal fireplaces, and more for the perfect beachfront holiday.



LAKES ENTRANCE WAVERLEY HOUSE COTTAGES

205 Palmers Road, Lakes Entrance VIC 3909
T: 03 5155 1257
E: enquiries@waverleyhousecottages.com.au
www.waverleyhousecottages.com.au



Feast on freshly caught seafood and enjoy Gippsland wines on the verandah of our stylish, FSC 1 and 2 bedroom spa cottages. Nestled among native gardens, guest facilities include woodfires, BBQs, heated hydrotherapy spa and outdoor pool. We offer a tranquil retreat for couples and families, close to Lakes Entrance.



METUNG WATERS MOTEL & APARTMENTS

9 Kurnai Ave, Metung VIC 3904
T: 03 5156 2166
E: metungwaters@bigpond.com
www.metungwaters.com.au



Right in the heart of Metung village. Spacious king, queen or twin bed motel rooms, all with Kitchenette and Spa bath. One and two bedroom fully self contained apartments with corner Spa bath. Adjacent to Patterson Park, just 50 metres to the historic Metung Hotel, village shopping and Lake beach.



Accommodation



Food & Wine



Place of Interest



Facebook



Instagram



THE RIVERSLEIGH

1 Nicholson Street, Bairnsdale VIC 3875

T: 03 5152 6966

E: info@riversleigh.com.au

www.riversleigh.com.au



Centrally located in an iconic, century-old building in Bairnsdale, The Riversleigh is at your service.

A beautiful and poised exterior leads to the restored interior, reflecting the heritage feel; classic meets contemporary with an elegant twist.

The 22 guest rooms, with ensuites, offer the seasoned traveller luxury and comfort with all the amenities required and personal, attentive service.

Complimentary continental breakfast is sourced from local produce.

Relax in the sunlit bistro Monday-Friday with coffee, cake and bar open 7 days a week.

Choose a relaxing sleepover between Sydney and Melbourne or stay a while and explore the naturally magic region of East Gippsland.

Modern amenities, historic elegance, relaxed luxury and unbeatable location.

The Riversleigh, a place like no other.



THE LOFT

4 Wood Street, Bairnsdale VIC 3875

T: 03 5153 1421

www.theloftcafeandrestaurant.com.au



Local fresh cuisine for everyone.

If it's not fresh, vibrant and jumping off the plate it's not on our menu!

We are fortunate enough to live in a unique and thriving region, rich in a vast array of beautiful fresh produce.

At The Loft we like to support our local producers.

All our meals are prepared and cooked fresh showcasing only the best of what East Gippsland has to offer.

From our seafood to steak, our large wine list and of course our fantastic staff... we're local through and through!

Open Monday to Saturday 6pm to 8pm.





CAPTAINS COVE RESORT

19 Mitchell Street Paynesville VIC 3880

T: 03 5156 7223

E: info@captainscove.com.au

www.captainscove.com.au



Captains Cove Resort is Paynesville's premier waterfront accommodation. Set within peaceful surrounds of the Paynesville canals on the picturesque and protected part of the Gippsland Lakes, the resort offers spacious fully self-contained apartments, a heated indoor swimming pool, tennis court, private jetties, free Wi-Fi, private BBQ on each deck and water activities.

Captains Cove caters to a broad range of guests including holiday makers, boaties, corporate guests, fishing groups, golfers and couples. All apartments are 3 bedroom / 2 bathroom and rates are made more affordable as they are based on 1, 2 or 3 bedrooms.

Only a short walk to Raymond Island Ferry and the Esplanade where you will find an array of cafes and shops.

Explore one of the many walking / bike riding tracks or cruise the lakes by boat to see all that the beautiful region has to offer.



SARDINE EATERY & BAR

3/69 Esplanade Paynesville VIC 3880

T: 03 5156 7135

www.sardineeaterybar.com



Established October 2017, Sardine Eatery and Bar is situated on McMillan strait, overlooking Raymond Island.

The ever-changing, menu of Gippsland's finest produce by award winning chef, Mark Briggs compliments the beverage list of local and international wines or beers.

Open lunch and dinner, Tuesday through Saturday from 12:00pm and lunch on Sundays. Reservations are recommended via the Sardine Eatery and Bar website.

Sardine Eatery and Bar offers a Chef's Selection menu, featuring multiple dishes for \$75 per person - compulsory for parties of 10 or more.

Sardine Eatery and Bar was awarded One Hat in The Age Good Food Guide 2019 and Mark Briggs is the recipient of The Age Young Chef of the Year 2013.







SEA

DISTANCE CHART Distance between towns Km's	Bairnsdale	Buchan	Canberra	Cann river	Lakes Entrance	Mallacoota	Melbourne	Mitling	Paynesville	Omeo	Orbost	Sydney	Traralgon
Bairnsdale		78	456	165	36	234	282	31	17	122	90	738	118
Buchan	78		428	137	56	204	351	62	88	148	63	744	192
Canberra	456	428		289	429	423	737	440	468	584	365	310	572
Cann river	165	137	289		134	70	446	151	179	236	76	570	283
Lakes Entrance	36	56	429	134		206	311	24	51	126	59	745	154
Mallacoota	234	204	423	70	206		517	220	249	308	145	586	352
Melbourne	282	351	737	446	311	517		314	299	397	373	1054	165
Mitling	31	62	440	151	24	220	314		45	122	76	720	149
Paynesville	17	88	468	179	51	249	299	45		135	105	749	132
Omeo	122	148	584	236	126	308	397	122	135		154	901	239
Orbost	90	63	365	76	59	145	373	76	105	154		646	209
Sydney	738	744	310	570	745	586	1054	720	749	901	646		855
Traralgon	118	192	572	283	154	352	165	149	132	239	209	855	

LEGEND

Road Classification

- Freeway/Highway
- Major Sealed Road
- Minor Sealed Road
- Major Unsealed Road
- Minor Unsealed Road

Miscellaneous

- Railway Line
- Distance between towns
- Accredited Visitor Information Centre
- Non-accredited Visitor Information Centre
- Licensed Airport
- National Route Number
- State Route Number

Parks, Reserves & Other Public Land

- Parks & Reserves
- Wilderness Parks
- Alpine Resorts
- Marine National Parks & Marine Sanctuaries
- Marine Parks and Reserves
- Other Public Land

Touring Routes

- Sydney - Melbourne Coastal Drive
- Great Alpine Road
- (Alternate Route)

AUSTRALIA
Melbourne

0 10 20
KILOMETRES

Cartography by Spatial Vision 2007



NORTHERN GROUND

144 Main Street, Bairnsdale VIC 3875
T: 03 5152 1544
E. rob@northernground.com.au



Opened in late 2018, this cafe/restaurant by expat British chef Rob Turner is symbolic of Bairnsdale's gastronomic leap forward.

Here the star is Gippsland produce, sourced from the immediate area to create a menu of fresh, seasonal and inventive takes on breakfast and lunch staples. All dishes are beautifully executed and presented.

For brekky expect the likes of sourdough soldiers dipped into egg yolks dusted with smoked-bacon dukkah; at lunch, choose between rare roast beef sandwiches, lamb-ragu fettuccine or all-day Gippsland produce platters.

Dinner on Friday and Saturday features modern European inspired mains comprising roast meats and seafood with elaborate sides and trimmings.

The wine list showcases neighbouring vineyards, and there are local craft beers as well as original smoothie and fresh-juice concoctions.

Open Monday-Friday 8am-5pm, Saturday 8am- 2pm, Friday and Saturday night 6pm-late.



SANDPIPER HOLIDAY APARTMENTS

15 Roadknight St, Lakes Entrance VIC 3909
T: 03 5155 2323
E: sandpiperapartments@bigpond.com
www.sandpiperapartments.com



Relax, unwind in one of our comfortable air-conditioned apartments. Centrally located, short stroll to beach, shops and restaurants. Studios for couples also 1, 2 and 3 bedroom apartments for families. Free wi-fi, linen supplied, DVD players, flatscreen TV, solar heated pool, BBQ and heated spa room.



CRUISE THE GIPPSLAND LAKES

(Departs from Sale) Book Now
Spirit Australia Cruises: 1800 442 203
www.spiritaustraliacruises.com.au



A unique 6 day/5 night experience, exploring the lakes, rivers, islands and inter-connecting channels of the beautiful Gippsland Lakes on a small group cruise from Sale to Lakes Entrance. Fully inclusive including, all meals, specified excursions and coach return back to Sale. Cruise departs annually during January and February only.



WATERFRONT RETREAT AT WATTLE POINT

200 Wattle Point Road, Forge Creek VIC 3875
T: 03 5157 7517
E: info@wattlepointholiday.com.au
www.waterfrontretreat.com.au



Situated on the shore of Lake Victoria on the Gippsland Lakes, close to Bairnsdale and Paynesville, the retreat has 19 fully self-contained, waterfront or bush view lodges. Bring the whole family and enjoy the complimentary retreat activities or relax on a romantic getaway just for two.

Things to See & Do



Meet the locals



KROWATHUNKOOLONG KEEPING PLACE

37-53 Dalmahoy Street Bairnsdale VIC 3875
T: 03 5150 0737
E: rhudson@gegac.org.au
www.batalukculturaltrail.com.au



A museum housing art, craft and a variety of cultural displays with traditional artefacts from the Gunai/Kurnai people of Gippsland. Providing an insight into the aboriginal history and culture of the region it is a highlight of any East Gippsland visit. Open Mon-Fri 10:30am-4pm, or by appointment. Closed weekends and public holidays.



LAKES ENTRANCE HELICOPTERS

2965 Princes Hwy Kalimna West VIC 3909
T: 03 9017 0120
E: info@lakesentrancehelicopters.com.au
www.lakesentrancehelicopters.com.au



Enjoy the stunning scenery of the Silt Jetties, Lakes Entrance and Ninety Mile Beach coastline. Select from a range of scenic flights (min 2 passengers). Gift Certificates available for all our scenic flights. Located at Lakes Entrance Airfield on the Princes Highway 5kms before entering Lakes Entrance from Bairnsdale.



EAST GIPPSLAND SHIRE COUNCIL MARINAS

T: 03 5153 9500
E: councilmarinas@egipps.vic.gov.au
www.eastgippsland.vic.gov.au/marinas



Offering modern marina facilities at attractive tourist locations on the Gippsland Lakes. Numerous leisure services in a coastal village atmosphere. A full range of boating facilities and services plus safe, easy access to Bass Strait. Berths up to 14m available at Metung and Paynesville.



EAST GIPPSLAND ARTS

Arts Development, East Gippsland Shire Council
T: 1800 637 060 or 03 5153 9500
E: feedback@egipps.vic.gov.au
www.visiteastgippsland.com.au



East Gippsland is home to a thriving arts community. Artists, musicians and makers are motivated by the wonderful coastline and scenery. Be swept up in the richness and vibrancy of arts, culture and heritage in East Gippsland, which attracts renowned artisans passionate about their crafts. Learn about our traditional Indigenous art and heritage at the Aboriginal Cultural Museum in Bairnsdale then explore the many smaller galleries and workshops dotted throughout the region.

Meet artisans, musicians and people who have made East Gippsland home and who are passionate about their craft. Pick up a copy of the Arts Brochure from one of the region's Visitor Information Centres.



Accommodation



Food & Wine



Place of Interest



Facebook



Instagram



ILLUKA DAY SPA

1 The Esplanade, Lakes Entrance VIC 3909

T: 03 51 553 533

E: dayspa@esplanaderesort.com.au

www.illukadayspa.com.au



Illuka Day Spa is situated on the ground floor at the Western End of the Esplanade Resort.

Step Through the doors of Illuka and your sense of peace is immediate, the trained therapists are there to pamper your every need.

Illuka specialises in state of the art hydrotherapy treatments and offers a wide range of facials, massages and body treatments along with waxing and spray tanning.

All skin concerns can be addressed with a customised Aveda facial or let the therapists melt away stress, muscle tension and lack of energy with one of the Aveda aroma massages. They also offer hot rocks massage and pregnancy massage.

They have a well equipped couples suite which is an extra large treatment room with two treatment beds, couples geisha tub, twin showers and an ensuite. Perfect for any of our couples treatments, a mother/daughter experience or hens group.

Gift vouchers are also available and make a perfect gift for someone special.



RIVIERA NAUTIC

185 Metung Road Metung VIC 3904

T: 03 5156 2243

www.rivieranautic.com.au



Explore the Gippsland Lakes by boat – no licence required.

Self drive live-aboard yachts and motor cruisers.

Dayboat hire.

Australian Tourism Hall of Fame Winner.



SCHOOLWORKS SUPPLIES & BOOK NOOK CAFÉ

147 MacLeod St, Bairnsdale VIC 3875 (located next to EG Water)

T: 03 5152 4086

E: books@schoolworkssupplies.com.au

www.schoolworkssupplies.com.au



Bairnsdale's only award winning book shop and café in one! Stocking the largest range of educational supplies in East Gippsland - stationery, wall charts, local author books as well as books for all ages.

The Book Nook Café serves delicious homestyle lunches, using local produce as well as barista coffee, homemade cakes, biscuits and ice creams. Relax in the lounge area, under the veranda or in the book nook!

Free WIFI, baby change facilities and free gift wrapping. Lots of easy off street parking. Open Monday to Friday 9am to 5pm with ample of easy off street parking.



EAST GIPPSLAND AQUATIC & RECREATION CENTRES

80 McKean Street, Bairnsdale VIC 3875 & 43 Palmers Road, Lakes Entrance VIC 3909
T: 03 5153 9500
E: feedback@egipps.vic.gov.au
www.eastgippsland.vic.gov.au/recreationcentres



Visit our recreation centres for some family fun or fitness during your holiday. Facilities include heated indoor 25metre pool, spa, sauna, health club and group fitness classes.

Casual entry and holiday memberships available.



Lakes Entrance
Aquadome



Bairnsdale
Aquatic and Recreation Centre



GRIFFITHS SEA SHELL MUSEUM & MARINE DISPLAY

125 Esplanade, Lakes Entrance VIC 3909
T: 03 5155 1538
E: coralie@westnet.com.au



See one of the largest private collections of natural marine life in our internationally acclaimed Museum, established in 1962. Over 90,000 world-wide shells, rare and strange sea creatures, Pandora coral reef room, aquarium, live local shells and fish, plus gift shop and model railway display.



VENTURE OUT

T: 0427 731 441
E: info@ventureout.com.au
www.ventureout.com.au



Venture Out in Lakes Entrance offer both guided and self-guided adventure experiences for mountain biking, kayaking and stand up paddle boarding. With quality hire gear available year round, as well as regular adventure tours, guests can enjoy skills instruction and local advice or just take some time out on their own to discover this beautiful part of the world.

Situated right across the street from the Gippsland Lakes, guests have easy access to scenic paddling and riding experiences that bring them up close to nature. Families often enjoy the Simply Singletrack Mountain Bike tour – an introduction to the sport of mountain biking, while some couples ride through the forest to a local brewery for lunch, with a shuttle pick up.

Sunset Stand Up Paddling tours take guests to see the iconic Entrance where seals and dolphins can be seen. Or Paddle and Dine for half a day on kayaks to a local winery for lunch.



Accommodation



Food & Wine



Place of Interest



Facebook



Instagram

THE GIPPSLAND LAKES | 19

The High Country



Omeo town

Set high in the Great Dividing Range, the Omeo Region is one of Victoria's best kept secrets; beautiful vistas, high country hospitality, adventure activities and a region rich in history and heritage.

Discover the National Parks, the Australian Alps walking track, crystal clear rivers, historic huts, camping spots, horse riding, fly fishing, galleries, wineries and golf courses.

The spectacular Great Alpine Road is Australia's highest sealed road, with year-round access. It takes you from the top of Victoria's High Country, down to the magnificent lakes and coastal country of East Gippsland.

There are many touring routes and 4WD adventures off the Great Alpine Road in the Australian Alps to ensure you feel invigorated and far away from the hustle and bustle. Meander through the historic towns within the region, and enjoy good high country food at the cafes and pubs.

Take your time, enjoy some of the local produce and make sure that you stay a while to experience the High Country difference.

To find out more about our unique towns and villages, visit us at www.visiteastgippsland.com.au/regions/alpine-high-country or call one of our Visitor Information Centres on 1800 637 060



Explore our Towns & Villages

Benambra

Victoria's first cattle station and now a village offering access to the Three Brothers and the Sisters, part of the Bowen mountain range and (seasonal) Lake Omeo.

Cassilis

Once a thriving mining community and home to the early goldfields, the mines are ideal for walking and exploring, with occasional relics of the gold mining era.

Omeo

As well as its high country plains, fresh air and bush landscape, Omeo offers landmarks that reflect its gold-mining heritage. Visit the Oriental Claims, the log gaoi, or go white water rafting or trout fishing on the Mitta Mitta.

Swift's Creek and Ensay

Take the scenic route around these towns in the beautiful Tambo Valley and take in the incredible high country scenery or sample the local grape offerings at high altitude wineries.



10 great places to explore through the High Country

- 01** Drive the iconic Great Alpine Road, unparalleled for its stunning views and driving experience.
- 02** The Alpine National Park is a bush walkers' paradise, immerse yourself in the amazing flora and fauna.
- 03** See the High Country as the pioneers did: from horseback.
- 04** Re-visit the heady days of the gold rush when you take in the beautiful architecture and heritage listed buildings of Omeo.
- 05** Whether it's a peaceful paddle or an adrenalin-pumping adventure, white water rafting is a unique way to enjoy the High Country.
- 06** Take your pick of some of the most tranquil and isolated camping areas in Victoria.
- 07** See some of the most stunning wilderness in the world from vantage points in the High Country.
- 08** Enjoy estate-grown and made wines and nibbles or choose a boutique beer to suit your tastes.
- 09** From cruisy cross-country mountain bike tours to high-altitude adventure, see the High Country from another perspective.
- 10** Explore the High Country at your own pace on one of the many 4WD and touring routes that traverse the region.

For more inspiration, contact our Visitor Information Centre on 1800 637 060 or visit www.visiteastgippsland.com.au/things-to-see-a-do



High country hut- Photo by Jeff Freestone Photography

THE HIGH COUNTRY

Places to Stay, Wine & Dine



THE BLUE DUCK INN

2855 Omeo Hwy, Anglers Rest VIC 3898
T: 03 5159 7220
E: iana@blueduckinn.com.au
www.blueduckinn.com.au



Standing in splendid isolation on the Cobungra River, surrounded by a million acres of National Park. Situated on the Omeo Highway between Omeo and Falls Creek, the Duck is renowned for its fine food and local wine. We offer accommodation in six self-contained cabins. A unique experience not to be missed.



GOLDEN AGE MOTEL

189 Day Avenue, Omeo VIC 3898
T: 03 5159 1344
E: goldenageomeo@gmail.com
www.goldenageomeo.com.au



Call into the Golden Age Hotel/Motel to experience our old fashion hospitality, a cold beer and one of the best steaks going.

The Golden Age has 15 ensuite rooms and 6 budgets rooms, catering for everyone.

Open 7 days a week.



THE PRESSING SHED RESTAURANT & CAFE

290 Bindi Road Tongio VIC 3896
(3km off the Great Alpine Road between Omeo and Swift's Creek)
T: 03 5159 4455



Stunning café and restaurant at Nullamujie Olive Grove. Enjoy a delicious breakfast, coffee and cake or lunch and a relaxing glass of wine on our vine shaded deck

See how olive oil is made and purchase our multi-award winning olive oil. Open weekends 8.30am-4pm October to Easter.

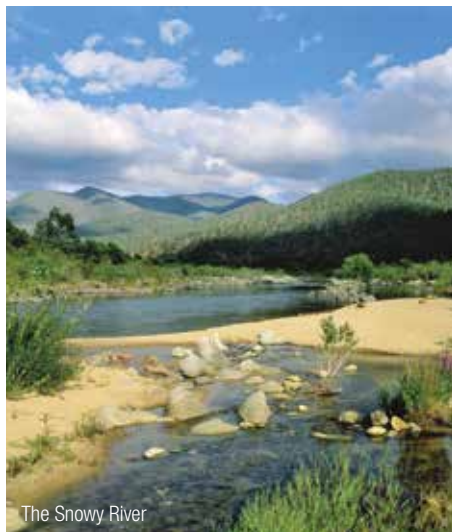
Snowy River Country



Snowy River Canoeing

A major river in south-eastern Australia, the mighty Snowy River begins in Kosciuszko National Park and winds 352 kilometres south until it reaches the sea at Marlo, in East Gippsland.

Snowy River Country spans from the forests to the sea, including the rugged high country around McKillops Bridge, the honeycomb labyrinth of the Buchan Caves to the majestic stands of remnant coastal rainforest near Marlo and Cape Conran Coastal Park. Discover the adventure, legend and romance of the Snowy River in the towns of Buchan, Marlo and Orbost, or the high country settlements of Goongerah, Bonang, Bendoc and Tubbut.



The Snowy River

Take a day or two to explore Snowy River Country on the Snowy River Country Trail, a 285 kilometre drive through the region's magnificent natural and heritage attractions. The trail is suitable for cars all year round but not for caravans or trailers as some roads may be unsealed, narrow or windy in parts.

You can choose to raft it, walk it, 4WD it, or just take photos of it – the Snowy is all about adventure. This region has much to offer - Buchan Caves, Snowy River and Alpine National Parks, and towns that are brimming with country hospitality.

To find out more about our unique towns and villages, visit us at www.visiteastgippsland.com.au/regions/snowy-river-country or call one of our Visitor Information Centres on 1800 637 060.



4WD country



Explore our Towns & Villages

Buchan

Situated in a picturesque valley, Buchan is renowned for its limestone caves, cliffs and the Buchan River. There is plenty more for visitors to see and do including horse riding, bush walking and relaxing.

Bendoc/Bonang/Goongerah/Tubbut

Four small hamlets on the Snowy River Country Trail, these towns sit in one of the most beautiful corners of Victoria. Take in the spectacular sights of the Snowy River National Park and historic McKillops Bridge - said to be one of the longest arc-welded steel truss road bridges in the world.



Trail map



Fishing on the Snowy River



Orbost

Marlo

Where the 'Snowy meets the Sea', Marlo is a tranquil seaside town at the mouth of the Snowy River. Enjoy some of the best perch and bream fishing in Australia, go bush walking or bird-watching and visit remote beaches.

Nowa Nowa

History, art and nature converge in the small village of Nowa Nowa. Once a stronghold of the local timber industry, it is now an art and fishing paradise. Discover the abundance of birds and other wildlife on one of the many sign-posted walks.

Orbost

Surrounded by coastal rainforests and hinterland, Orbost has a rich history of riverboats and steamers, farmers, gold and timber mills. Experience high plateaus and ancient old-growth mountain forests, or simply pedal along the East Gippsland Rail Trail.

10 great places to explore along the Snowy River

- 01** Home to Victoria's famous Buchan Caves. Discover the beautiful stalactites and stalagmites on a guided tour.
- 02** Enjoy a beer in the revived Buchan Caves Hotel - Australia's first crowd-funded hotel.
- 03** The Slab Hut Visitors Information Centre in Orbost is an authentic early settler's hut.
- 04** Get pedalling... there is a cycling adventure to suit every level.
- 05** Visit Little River Falls, a beautiful waterfall plunging 20 metres into a deep, clear pool.
- 06** Buy a bag of fresh corn direct from the farmer, or explore the local cafes and grocers to enjoy the best in locally grown produce.
- 07** Buy local produce direct from the farmer or enjoy at a local cafe.
- 08** Explore the stunning Errinundra National Park - home to Victoria's largest remaining cool temperate rainforest.
- 09** Choose from fishing, horse riding, water adventure and exploring the wilderness, or combine them all into one action packed adventure..
- 10** Enjoy elevated views of the estuary, river mouth and coastline from the Snowy River Estuary Walk.

For more inspiration, contact our Visitor Information Centre on 1800 637 060 or visit www.visiteastgippsland.com.au/things-to-see-a-do

SNOWY RIVER COUNTRY

Places to Stay, Wine, Dine & Discover



McKenzie River Rain-forest Walk



TABBARA LODGE MARLO

1 Marlo Road, Marlo VIC 3888
T: 03 5154 8231
E: tabbaralodge@gmail.com
www.tabbaralodgemarlo.com.au



Tabbara Lodge Marlo offers boutique style family accommodation in the heart of Marlo. All units are self contained, with linen supplied and air conditioned. Set in beautiful garden surrounds with a salt water swimming pool, undercover BBQ area, room to park your boat and you can even bring the dog.

Whether you're
SUPing at
Woods Point,
Hiking Mt
Ellery, fishing
the Brodribb or
tackling
Deddicks trail
in your 4wd or
adventure bike

The Orbost Club HOTEL

is the perfect base
for you to explore
Snowy River Country.

www.Orbostclubhotel.com.au

63 Nicholson St, Orbost, Vic 3888, Ph: 03 5154 1003

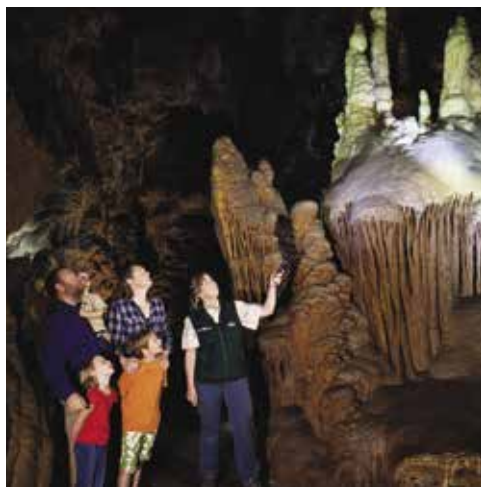


*Awesome food and of
course great beer
including the local
Sailors Grave on tap.*



*Rest up in 20 affordable
rooms which can sleep
up to 31 people.*





BUCHAN CAVES RESERVE

Buchan Caves Reserve, Caves Road, Buchan VIC 3885

T: 13 1963

E: info@parks.vic.gov.au

www.parks.vic.gov.au



Discover the Royal and Fairy caves.

Located just forty-five minutes from Lakes Entrance lies a reserve of spectacular underground limestone caves. Open daily (except Christmas day), visitors can take a ranger led tour to explore the amazing formations in the Royal and Fairy Caves, that have developed over thousands of years.

Whatever the season, there are a range of walking trails to explore in the area - remember to keep an eye out for the variety of birds and native animals which visit the reserve every day.

For those wanting to stay overnight, camping sites and self-contained cabins are available.

Buchan Caves Reserve in Krautungalung Country is proudly joint managed by Parks Victoria and Gunaikurnai Land and Waters Aboriginal Corporation www.gunaikurnai.org



Slab Hut Information Centre

ORBOST DISTRICT

Orbost & District Chamber of Commerce & Industry

39 Nicholson Street, Orbost VIC 3888

T: 03 5154 2424

E: egl@bigpond.com

Orbost is the gateway to commence a range of outdoor adventure options in the district. Whether you wish to walk in a rainforest, canoe a mighty river or enjoy a cycling adventure, the Snowy River District has endless outdoor options.

The visitor information centre at the historic slab hut is open 364 days of the year. There you can get detailed information on the best canoe launching sites, where best to explore the region's tracks in 4WD, 2WD or by motorcycle. If cycling is your choice, you may like to ride a short distance along the Snowy River or perhaps ride the 100 km rail trail to Bairnsdale. Perhaps catch a fish or go boating.

There are also a range of walking options including a short walk along the Snowy River in Orbost and the Snowy Estuary walk at Marlo. The rainforest walk at McKenzie River should not be missed.

Regardless of what you want to do, the Orbost Visitor Information centre is the place to get the detailed information.



Forest Park



Accommodation



Food & Wine



Place of Interest



Facebook



Instagram

SNOWY RIVER COUNTRY | 27

The Coastal Wilderness



One of the most accessible and pristine coastal wilderness areas, midway between Melbourne, Sydney and Canberra is Croajingolong National Park and the Wilderness Coast.

100 kilometres of rugged and unspoilt coastline plus pristine eucalypt forest, rainforest and heathland combine to offer a rare glimpse of wilderness, wildlife and adventure including indigenous and endangered species in their native environment.

Mild winter and summer temperatures make it an ideal destination in any season for camping, bush walking or even day trips from nearby towns.

Plan a coastal walk, bird watching expedition or boat and fish with ease. View panoramic coastline from Genoa Peak, the giant sand dune grandeur at Thurra River or tour the historic light stations of Point Hicks and Gabo Island.

Embrace the essence of beauty in the Coastal Wilderness and its hinterland, and you will be sure to experience something unique.

To find out more about our unique towns and villages, visit us at www.visiteastgippsland.com.au/regions/coastal-wilderness or call one of our Visitor Information Centres on 1800 637 060

Explore our Towns & Villages

Mallacoota

A perfect place to relax or stay and explore the pristine coastal wilderness of East Gippsland. Mallacoota is a year-round destination to enjoy walking, fishing, boating, canoeing, cruising, golfing, surfing and bird watching or to explore the bush in your 4WD.

Bemm River

One of East Gippsland's premier fishing destinations, Bemm River is a favourite with bird-watchers, bush walkers and eco tourists who appreciate its natural beauty and prevalent wildlife.

Cape Conran

Visit the Cape and experience wild ocean beaches and banksia woodlands, home to birds and wildlife, including seals. Pitch a tent and camp under the stars while you explore and unwind.

Cann River

The ultimate crossroad, Cann River is a good place from which to explore Croajingolong National Park, Point Hicks lighthouse and the ancient rainforests of Victoria's far east. It is also a popular roadside stop, a place to pick up supplies and rest awhile.

Croajingolong National Park

Following the far-eastern coastline of Victoria for 100 kilometres and covering 87,500 hectares, the Park is a UNESCO World Biosphere Reserve that cocoons and protects remote beaches, tall forests, heathland, rainforest, estuaries and granite peaks.



Point Hicks Lighthouse



Genoa Peak



Mallacoota

10 great places to explore The Coastal Wilderness

- 01** With bountiful fishing opportunities, cast a line, launch your kayak or head to one of the stunning surf beaches.
- 02** Climb to the top of Genoa Peak to enjoy 360 degree views over the Croajingolong wilderness coastline, Gabo Island and Mallacoota Inlet.
- 03** Be fascinated by the diverse, and beautiful, underwater marine life with popular dive sites including Beware Reef, Point Hicks and Gabo Island.
- 04** It's not all wilderness. There are places to stop and enjoy delicious food, historic sites and local art.
- 05** Follow the boardwalk on the Cape Conran Nature Trail and learn about the Indigenous significance of the area. Meander the Mallacoota Coastal walk and explore.
- 06** Go cycling and take in the sights of this beautiful piece of Australia. BYO or hire one in town.
- 07** Immerse yourself in the serenity of the wilderness and make the most of public camping spots in the National Park.
- 08** Cape Conran's renowned Wilderness Retreats are a truly unique way to enjoy the stunning natural environment of the Cape.
- 09** Visit Point Hicks, where Captain Cook first saw Australia in 1770 and marvel at the majestic lighthouse and scenic beauty.
- 10** A must-see for the wildlife lover, Gipsy Point is home to 280 species of birds.

For more inspiration, contact our Visitor Information Centre on 1800 637 060 or visit www.visiteastgippsland.com.au/things-to-see-a-do



Places to Stay



Cape Conran



GIPSY POINT LAKESIDE

261 Gipsy Point Road, Gipsy Point VIC 3891
T: 03 5158 8200
E: stay@gipsylakeside.com
www.gipsylakeside.com



Surrounded by native gardens, adjacent the headwaters of Mallacoota Inlet in the middle of the UNESCO listed Croajingolong World Biosphere Reserve and the heart of Australia's Coastal Wilderness. Modern self-contained 1 and 2 bedroom luxury apartments feature floor-to-ceiling windows and private verandah with water views. Enjoy quality facilities inc. air-con., dishwasher, TV, pool, BBQ, canoes, a licensed boutique shop with the wilderness right at your door. We even have motorised hire boats (no licence required) to explore the pristine Mallacoota Inlet. Ideally located halfway along the Sydney-Melbourne coastal drive. Special rates for 2, 3 and 7 night stays.



BEMM RIVER CARAVAN PARK

2-14 Sydenham Inlet Rd, Bemm River VIC 3889
T: 0428 557 438
E: bemmrivercaravanpark@gmail.com
www.bemmrivercaravanpark.com.au



ESCAPE - UNWIND - FISH...
Spacious grassy sites – lake views and fire pots available at some sites.
Camp kitchen with BBQ's and open fire. Pet friendly.
Self-Contained Overnight Cabins.
Resident Managers
Greg, Mandy & Carl Forrester



MALLACOOTA FORESHORE CARAVAN PARK

Allan Drive Mallacoota
T: 03 5158 0300
E: mallacootacp@egipps.vic.gov.au



Mallacoota Foreshore Holiday Park is your ideal traditional camping holiday with modern park services provided. Located mid-way between Melbourne and Sydney and just three hours' drive from Canberra, Mallacoota Foreshore Holiday Park is one of the largest and relaxed holiday parks in Victoria.



Accommodation



Food & Wine



Place of Interest



Facebook



YouTube



LAKES ENTRANCE

SUMMER CARNIVAL

CHANTS
KING OF FUN

LAKES ENTRANCE FOOTBRIDGE • DECEMBER - JANUARY (SUMMER HOLIDAYS)
6.00PM NIGHTLY (WEATHER PERMITTING)

WWW.FACEBOOK.COM/CHANTSSUMMERCARNIVAL



PRESENT THIS SPECIAL OFFER WITH YOUR RIDE
COUPONS ON ANY RIDE AT THE CARNIVAL
TO REDEEM!*

1 MATE GETS TO RIDE FOR
FREE!

* MUST BE ON THE SAME RIDE, AT THE SAME TIME.
NOT VALID ON NEW YEARS EVE. OFFER CAN ONLY BE USED ONCE.

