

SILo ART ROAD TRIP

Melbourne to the Murray

Experience art, heritage, and nature — one silo at a time

Since 2015, silo art has brought colour and creativity to regional Australia, transforming grain silos into towering works of art. Our curated trail features stunning murals that celebrate the stories and spirit of our local communities.

Take a scenic drive from Melbourne to the Murray and immerse yourself in the charm of small towns, breathtaking landscapes, and welcoming locals. Whether you spend a day or a weekend, enjoy leisurely stops for meals, explore historic streets, and breathe in the fresh country air.

Plan your journey. Discover the art. Feel the connection.

veryhungrynomads
St James Silo Art



"Our home town of Melbourne is known for its vibrant art scene, but you can get your dose of it in Regional Victoria too... A perfect way to spend the day. There are some epic landscapes as you drive along the trail which starts from Benalla, about 200kms north of Melbourne"

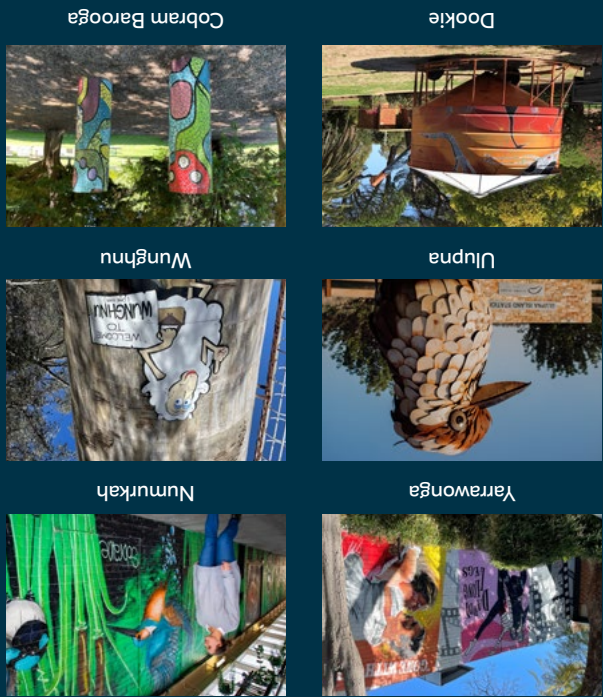


visitechucamoama.com.au
suncountryonthemurray.com.au



#siloartroadtrip
@visitsuncountry
@echucamoama

Thanks for visiting. Share your Silo Art Road Trip to be featured on our socials.



Other must-see sculptures and murals to visit in the region



COLBINABBIN

Painted by renowned artist Tim Bowtell, the Colbinabbin Silo features artwork across 6 silos! The artwork depicts five different scenes from varying times through the town from the early 1900s to the 1980s.



ROCHESTER

Featuring local flora and fauna, the Rochester Silos were painted by renowned artist Jimmy D'Vate in 3 stages. Completed in 2018, the first silo's feature the Azure Kingfisher and endangered Squirrel Glider. The Platypus, found in various locations around Rochester, was completed next, with Jimmy returning in 2024 to include the New Holland Honeyeater.



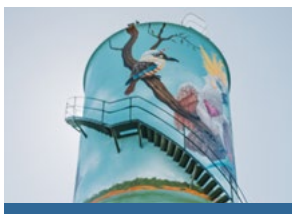
KYABRAM

The Kyabram Water Tank was painted by Jimmy D'Vate in March 2021 and features the Kyabram Fauna Park wetlands and some of the wildlife that inhabit them, including the Major Mitchell cockatoo and the eastern long neck turtle.



MOAMA

Created by internationally acclaimed artist Hiroyasu Tsuru, also known as Twoone, the mural blends the beauty of nature with local birdlife. A range of birds decorate the tower including the white faced heron, crimson rosella, rainbow lorikeet and the Australian magpie.



MATHOURA

Renowned artist DULK embarked on an extraordinary project to bring Australia's unique wildlife to life on the Mathoura water tower mural. This stunning artwork celebrates five iconic Australian animals – Yellow Rosella, Platypus, Sulphur Crested Cockatoo, Echidna and Australian Pelican.



PICOLA

Jimmy has painted a wayward fishing hook into this picture as a reference back to the past. Picola was nicknamed 'The Hook' in the early days of the railways coming to town because it was 'on the end of the line'. See if you can find it.



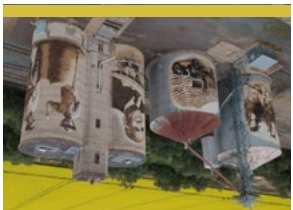
WAAIA

The silos depict the Soldier Settlement, which started in Waaia in the 1950s, with the walk through dairy and featuring Bill Martin, a worker in the 1950s and 1960s, who could carry 120kg wheat bags on each shoulder. The silos also feature the water wheel for the irrigation that came through at the same time and the Beetle that used to cart the wheat to and from where it needed to go.



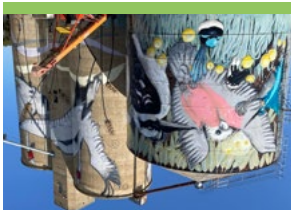
KATAMATITE

Tim Bowtell took 32 days to complete the silos and an extra day to do the wildflowers on the concrete block in front of them; The silos are so tall in the centre that the boom lift wouldn't reach the top.



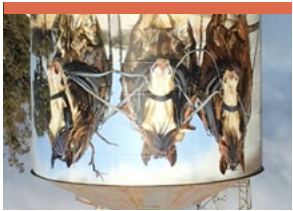
This was the first silo to be painted in North East Victoria. Sobrane, who is the first Australian female silo artist, used 60 litres of paint and 142 spray cans. The entire project took just 8 days.

TUNGAMAH



DEVENISH

Inspired by the bravery of local men and women who served in WWI, the silo a military theme from the outset. Just days before its ANZAC Day unveiling, was made to add vibrant poppies—with paint rushed in from Shepparton and the silos possibly still drying during the dawn service.

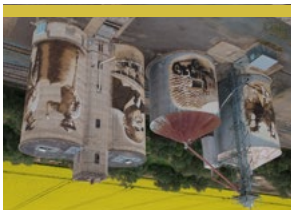


GOORAMBAT

The Barking Owl is Millie (Millie) from Healesville Sanctuary. The Clydesdales are Clem, Sam and Banjo, bred in Goorambat by the Trewin family.

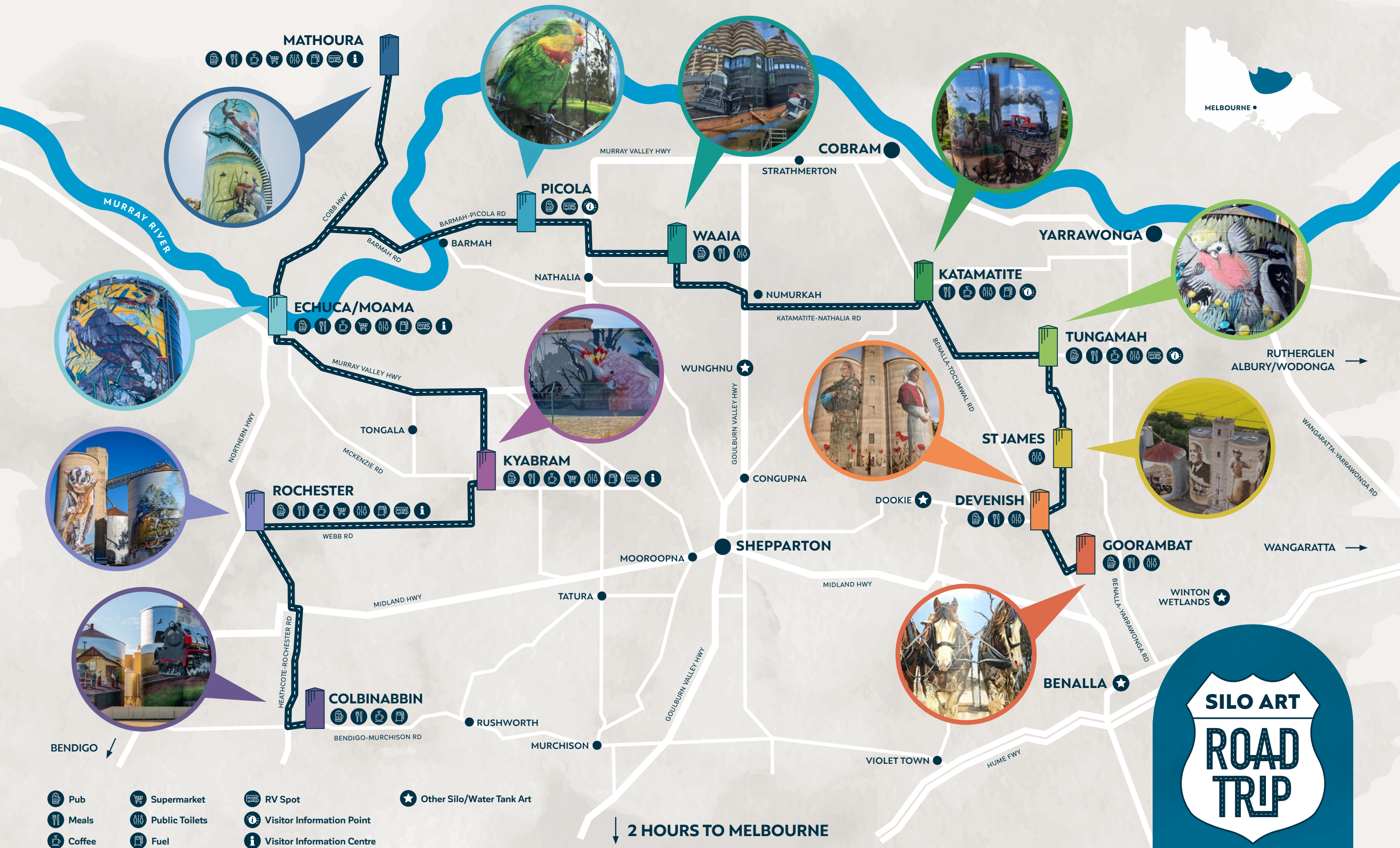
Look hard on the first silo and you will find the face of artist Tim Bowtell driving the horses beside the load of wheat.

ST JAMES



Other great silo and street art murals can be found nearby in Barham, Benalla, Dookie, Rutherglen and Winton Wetlands.

Keep exploring



Colbinabbin to Rochester	Rochester to Kyabram	Kyabram to Echuca/Moama	Echuca/Moama to Mathoura	Mathoura to Picola	Picola to Waaia	Waaia to Katamatite	Katamatite to Tungamah	Tungamah to St James	St James to Devenish	Devenish to Goorambat
34 km / 24 min	36 km / 26 min	40 km / 31 min	42 km / 31 min	54 km / 36 min	26 km / 19 min	39 km / 28 min	23 km / 17 min	13 km / 12 min	7 km / 5 min	11 km / 10 min